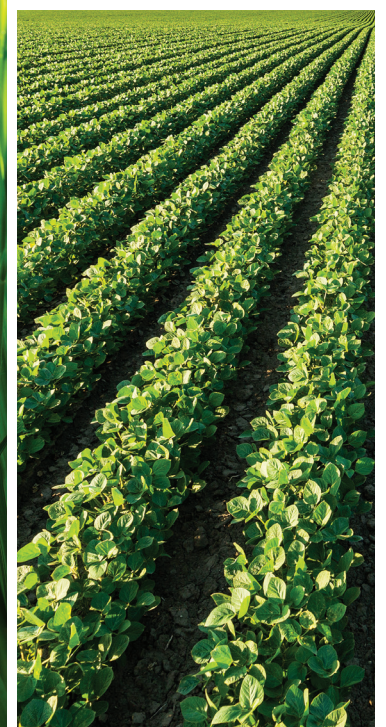




THE MEADOWS










AT ALLENDALE

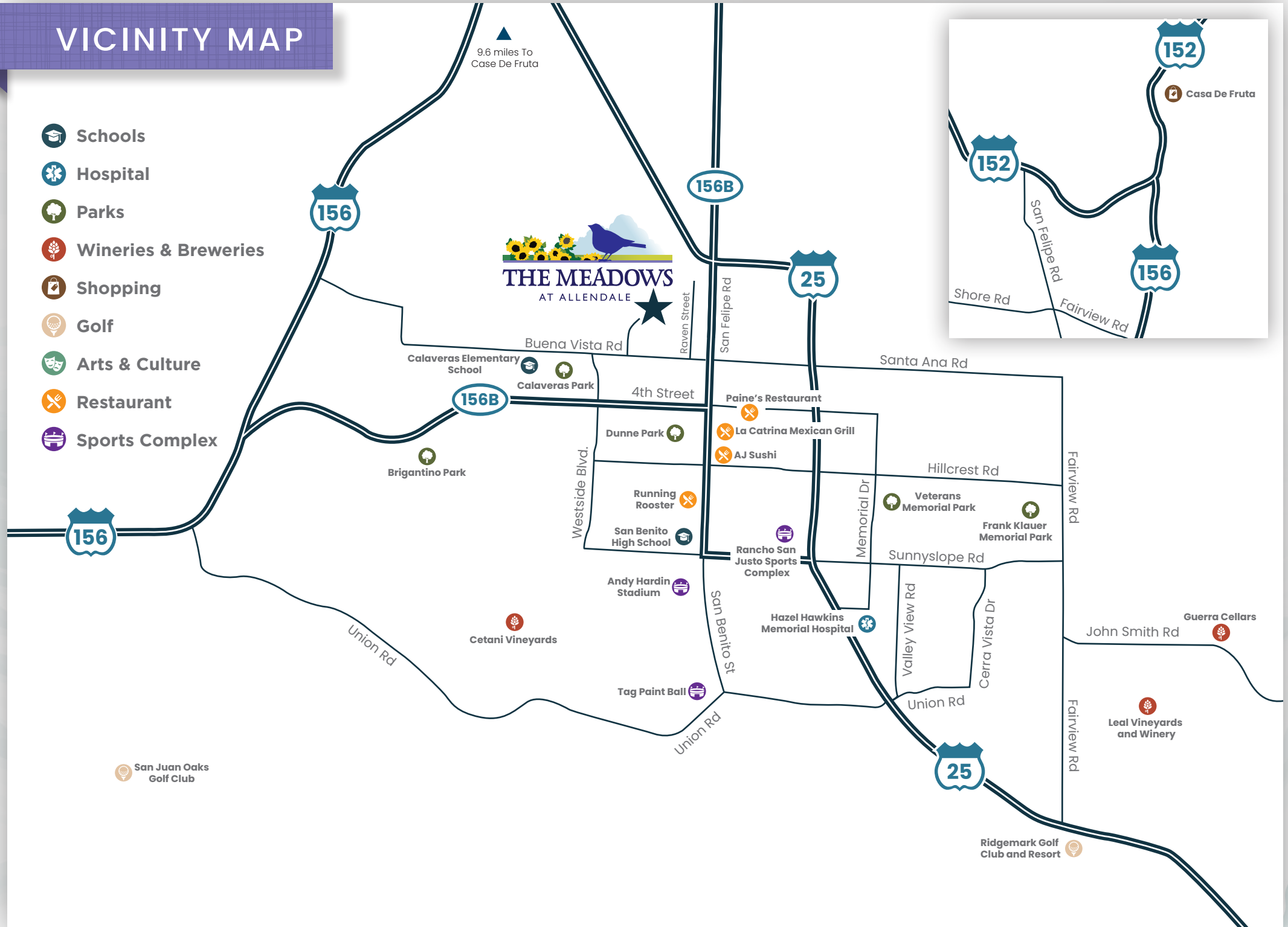
PRELIMINARY



BLOOMING WITH POSSIBILITIES

VICINITY MAP

-  Schools
-  Hospital
-  Parks
-  Wineries & Breweries
-  Shopping
-  Golf
-  Arts & Culture
-  Restaurant
-  Sports Complex





Flourish, it's a beautiful day. Get up and connect with family, friends and neighbors. Breathe in the fresh air that surrounds you—fragrant almond blossoms, freshly cut grass and a hint of citrus/ocean mist. This is a place you can put down roots. A place that bountifully provides fruitful treasures in every direction—this is Allendale. A thoughtfully planned community featuring something for everyone, located in the quaint and charming town of Hollister.

Welcome to The Meadows at Allendale featuring distinctive architectural flavor and attention to detail inside and out. 6 impressive single and two-story plans offer 1,685 to 2,763 square feet with three to five bedrooms and up to three baths. Unsurpassed amenities and features, a Meadows home is sure to bring a sense of pride for years to come.

Allendale's ideal location allows you to fill your days with adventure. From national parks to state parks to historic parks, plus easy access to beaches and local wineries, you'll find it all just a short distance from home. Experience the way nature and lifestyle come together to establish the foundation for an entire community to thrive.

ALLENDALE — BLOOMING WITH POSSIBILITIES



RESIDENCE 1

1,685 sq. ft.
3 Beds • 2 Baths
2-Car Garage
Covered Porch

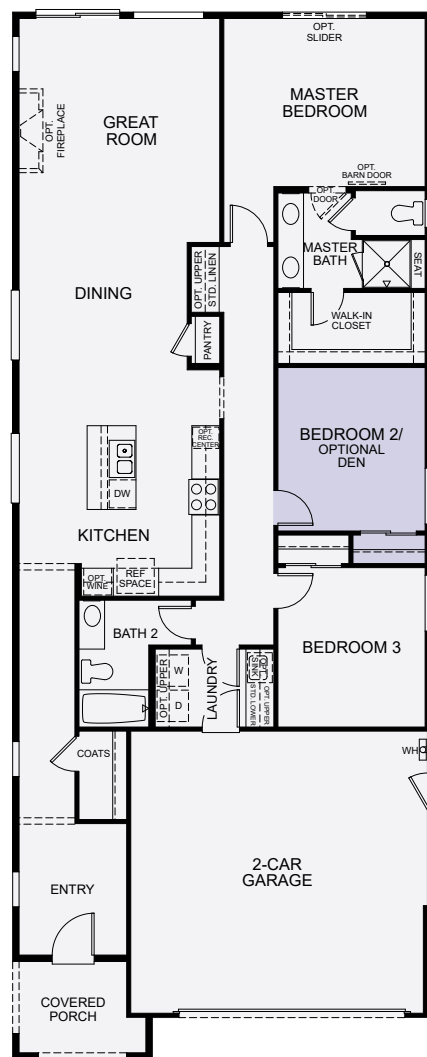
OPTIONS

Den in Lieu of Bedroom 2

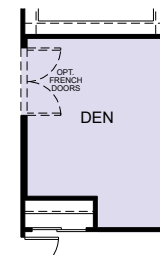


RENDERINGS AND FLOOR PLANS ARE ARTIST'S CONCEPTUAL DRAWINGS. SQUARE FOOTAGES ARE APPROXIMATE MAY VARY PER ELEVATION STYLE. WINDOW SIZES, SHAPES AND LOCATIONS MAY ALSO VARY PER ELEVATION STYLE. DUE TO OUR ONGOING COMMITMENT TO QUALITY; FEATURES, FINISHES, FLOOR PLANS, INFORMATION AND SPECIFICATIONS ARE SUBJECT TO CHANGE WITHOUT NOTICE.

RESIDENCE 1



FIRST FLOOR



Optional Den in Lieu of Bedroom 2

OPTIONS

RENDERINGS AND FLOOR PLANS ARE ARTIST'S CONCEPTUAL DRAWINGS. SQUARE FOOTAGES ARE APPROXIMATE MAY VARY PER ELEVATION STYLE. WINDOW SIZES, SHAPES AND LOCATIONS MAY ALSO VARY PER ELEVATION STYLE. DUE TO OUR ONGOING COMMITMENT TO QUALITY; FEATURES, FINISHES, FLOOR PLANS, INFORMATION AND SPECIFICATIONS ARE SUBJECT TO CHANGE WITHOUT NOTICE.



RESIDENCE 2

1,968 sq. ft.
3 Beds • 2 Baths
1 Powder Bath
2-Car Garage

OPTIONS

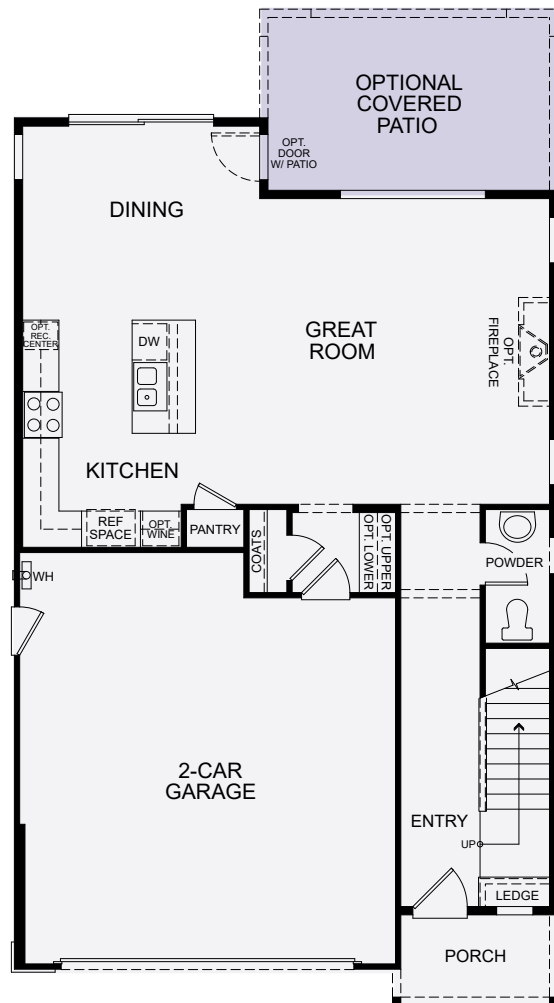
Covered Patio

Covered Patio w/
Fireplace

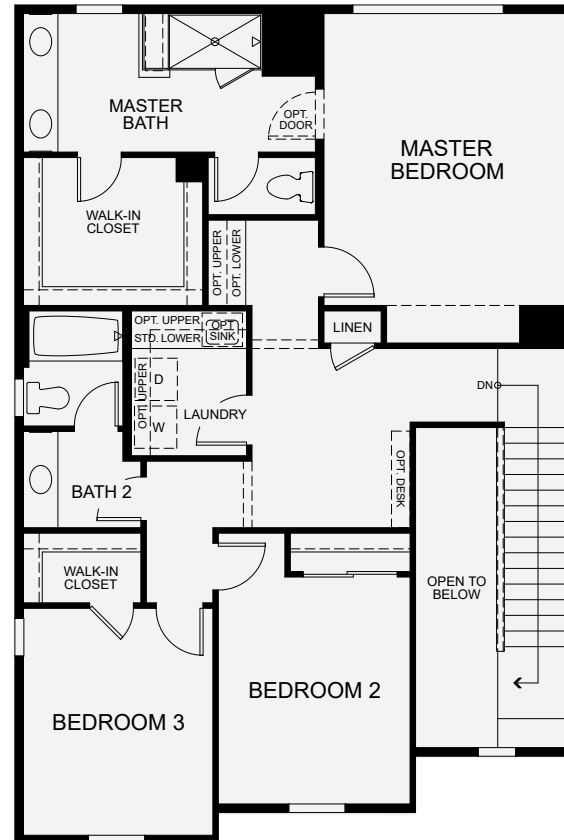


RENDERINGS AND FLOOR PLANS ARE ARTIST'S CONCEPTUAL DRAWINGS. SQUARE FOOTAGES ARE APPROXIMATE MAY VARY PER ELEVATION STYLE. WINDOW SIZES, SHAPES AND LOCATIONS MAY ALSO VARY PER ELEVATION STYLE. DUE TO OUR ONGOING COMMITMENT TO QUALITY; FEATURES, FINISHES, FLOOR PLANS, INFORMATION AND SPECIFICATIONS ARE SUBJECT TO CHANGE WITHOUT NOTICE.

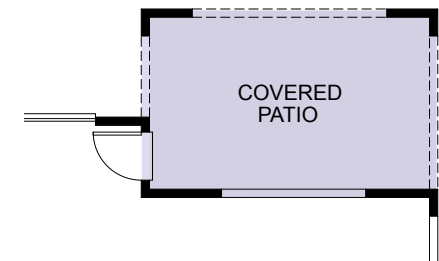
RESIDENCE 2



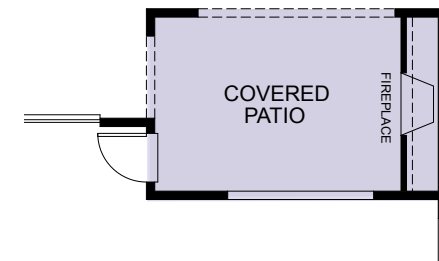
FIRST FLOOR



SECOND FLOOR



Covered Patio



Covered Patio w/
Fireplace

OPTIONS

RENDERINGS AND FLOOR PLANS ARE ARTIST'S CONCEPTUAL DRAWINGS. SQUARE FOOTAGES ARE APPROXIMATE MAY VARY PER ELEVATION STYLE. WINDOW SIZES, SHAPES AND LOCATIONS MAY ALSO VARY PER ELEVATION STYLE. DUE TO OUR ONGOING COMMITMENT TO QUALITY; FEATURES, FINISHES, FLOOR PLANS, INFORMATION AND SPECIFICATIONS ARE SUBJECT TO CHANGE WITHOUT NOTICE.



RESIDENCE 3

2,293 – 2,330 sq. ft.

4 Beds • 3 Baths

2-Car Garage

OPTIONS

Covered Patio

Covered Patio w/
Fireplace

Dining w/ Garage Storage
in Lieu of Bed 4

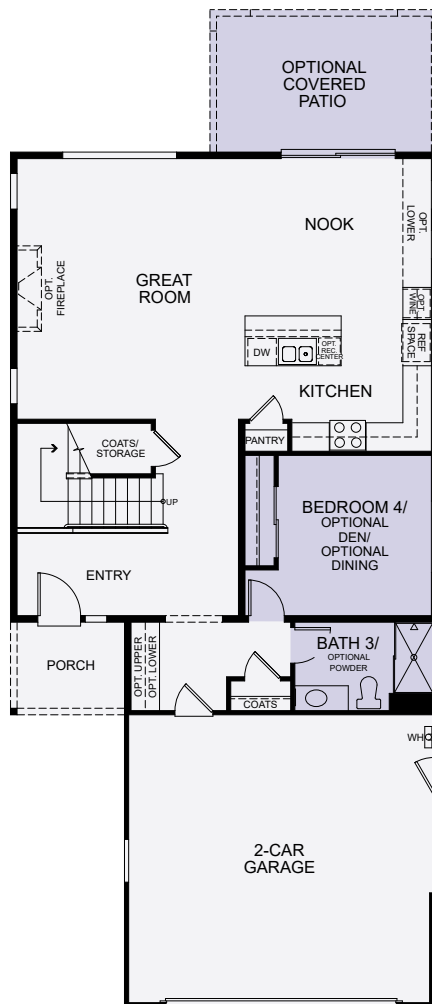
Dining w/ Dry Bar in Lieu
of Bed 4

Den in Lieu of Bed 4



RENDERINGS AND FLOOR PLANS ARE ARTIST'S CONCEPTUAL DRAWINGS. SQUARE FOOTAGES ARE APPROXIMATE MAY VARY PER ELEVATION STYLE. WINDOW SIZES, SHAPES AND LOCATIONS MAY ALSO VARY PER ELEVATION STYLE. DUE TO OUR ONGOING COMMITMENT TO QUALITY; FEATURES, FINISHES, FLOOR PLANS, INFORMATION AND SPECIFICATIONS ARE SUBJECT TO CHANGE WITHOUT NOTICE.

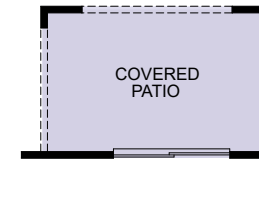
RESIDENCE 3



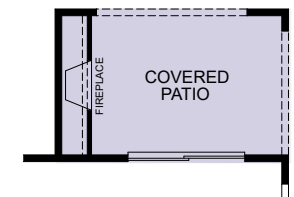
FIRST FLOOR



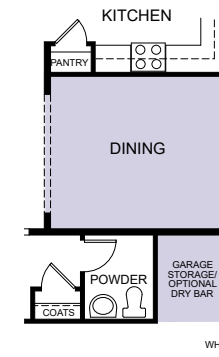
SECOND FLOOR



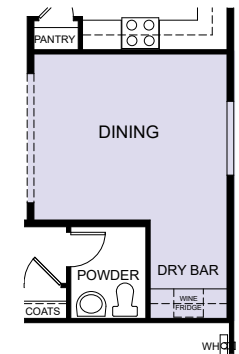
Covered Patio



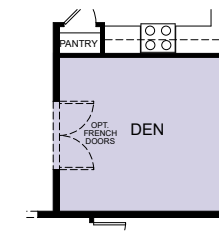
Covered Patio w/
Fireplace



Dining/Garage Storage
in Lieu of Bedroom 4



Dining/Dry Bar



Den in Lieu
of Bedroom 4

OPTIONS

RENDERINGS AND FLOOR PLANS ARE ARTIST'S CONCEPTUAL DRAWINGS. SQUARE FOOTAGES ARE APPROXIMATE MAY VARY PER ELEVATION STYLE. WINDOW SIZES, SHAPES AND LOCATIONS MAY ALSO VARY PER ELEVATION STYLE. DUE TO OUR ONGOING COMMITMENT TO QUALITY; FEATURES, FINISHES, FLOOR PLANS, INFORMATION AND SPECIFICATIONS ARE SUBJECT TO CHANGE WITHOUT NOTICE.



RESIDENCE 4

2,378 sq. ft.

4 Beds • 3 Baths

Covered Porch

2-Car Garage

OPTIONS

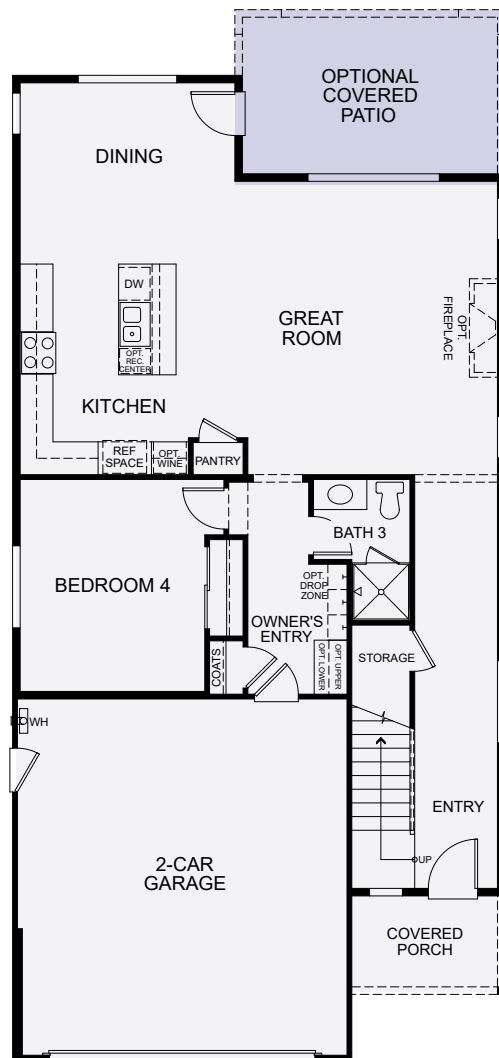
Covered Patio

Covered Patio w/
Fireplace

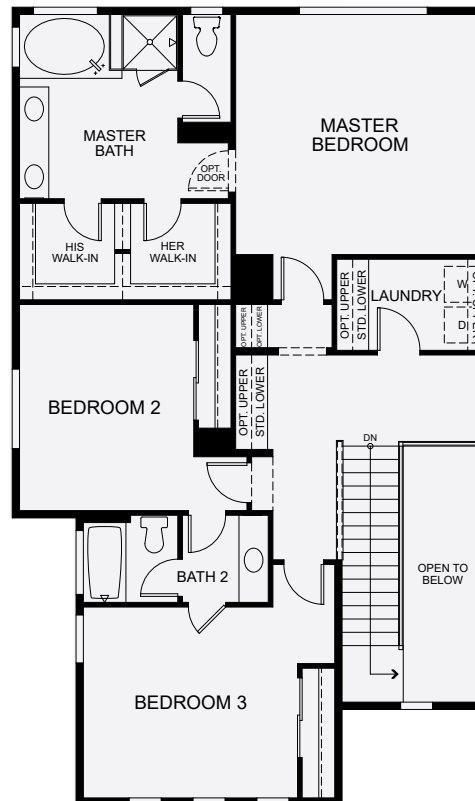


RENDERINGS AND FLOOR PLANS ARE ARTIST'S CONCEPTUAL DRAWINGS. SQUARE FOOTAGES ARE APPROXIMATE MAY VARY PER ELEVATION STYLE. WINDOW SIZES, SHAPES AND LOCATIONS MAY ALSO VARY PER ELEVATION STYLE. DUE TO OUR ONGOING COMMITMENT TO QUALITY; FEATURES, FINISHES, FLOOR PLANS, INFORMATION AND SPECIFICATIONS ARE SUBJECT TO CHANGE WITHOUT NOTICE.

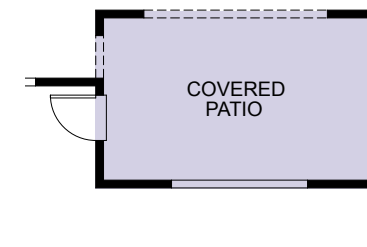
RESIDENCE 4



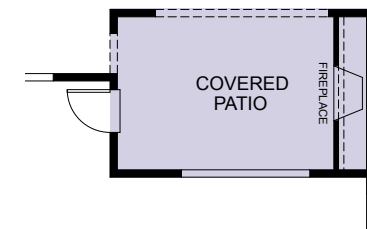
FIRST FLOOR



SECOND FLOOR



Covered Patio



Covered Patio w/
Fireplace

OPTIONS

RENDERINGS AND FLOOR PLANS ARE ARTIST'S CONCEPTUAL DRAWINGS. SQUARE FOOTAGES ARE APPROXIMATE MAY VARY PER ELEVATION STYLE. WINDOW SIZES, SHAPES AND LOCATIONS MAY ALSO VARY PER ELEVATION STYLE. DUE TO OUR ONGOING COMMITMENT TO QUALITY; FEATURES, FINISHES, FLOOR PLANS, INFORMATION AND SPECIFICATIONS ARE SUBJECT TO CHANGE WITHOUT NOTICE.



RESIDENCE 5

2,763 sq. ft.
4 Beds • 3 Baths
Covered Porch
Loft
2-Car Garage

OPTIONS

Covered Patio

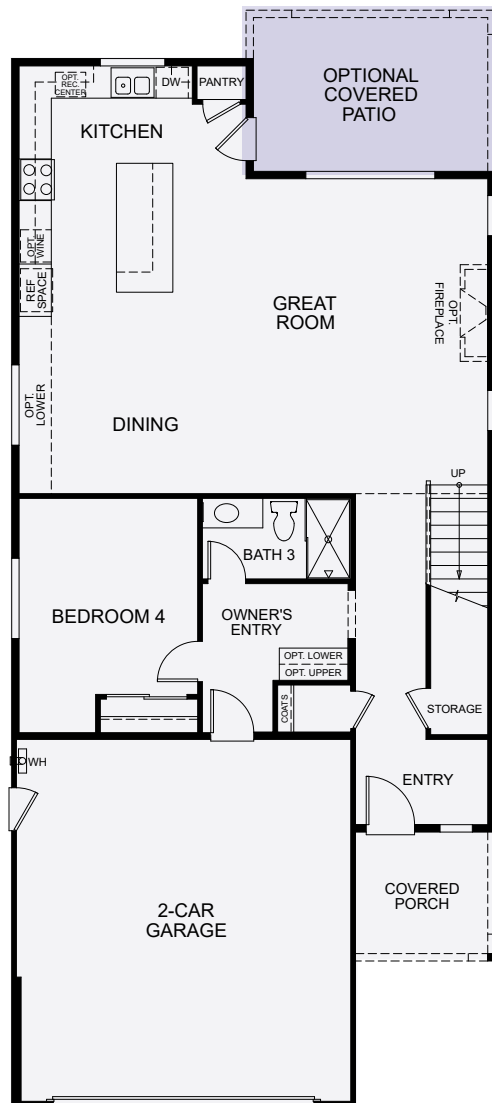
Covered Patio w/
Fireplace

Bed 5 in Lieu of Loft

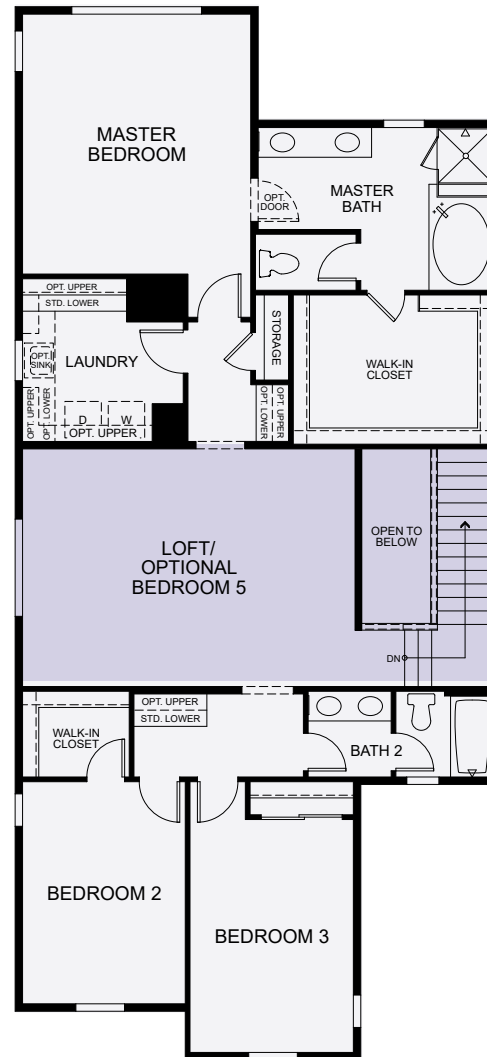


RENDERINGS AND FLOOR PLANS ARE ARTIST'S CONCEPTUAL DRAWINGS. SQUARE FOOTAGES ARE APPROXIMATE MAY VARY PER ELEVATION STYLE. WINDOW SIZES, SHAPES AND LOCATIONS MAY ALSO VARY PER ELEVATION STYLE. DUE TO OUR ONGOING COMMITMENT TO QUALITY; FEATURES, FINISHES, FLOOR PLANS, INFORMATION AND SPECIFICATIONS ARE SUBJECT TO CHANGE WITHOUT NOTICE.

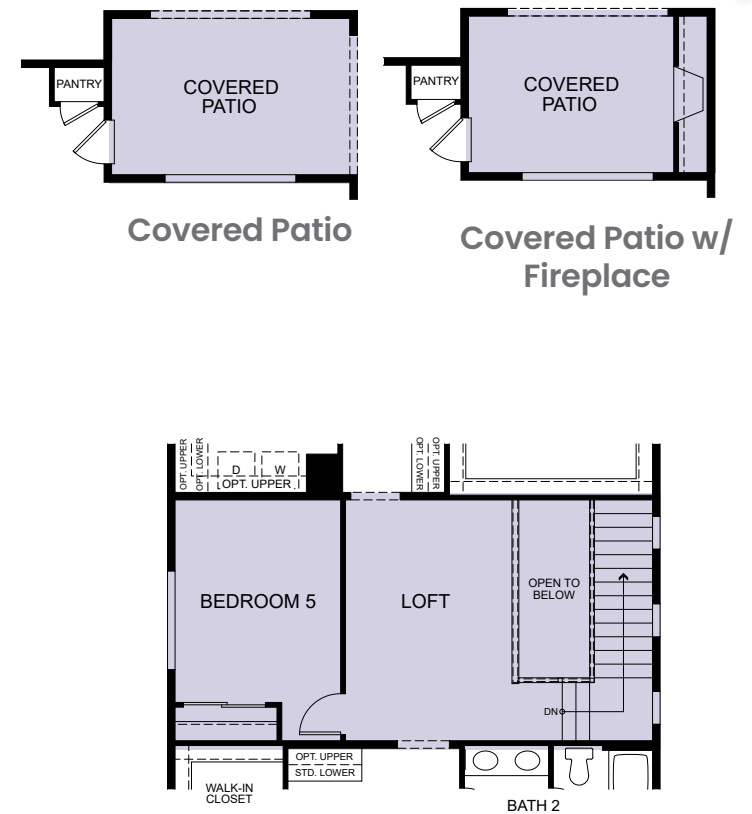
RESIDENCE 5



FIRST FLOOR



SECOND FLOOR



Bedroom 5 in lieu
of Loft

OPTIONS

RENDERINGS AND FLOOR PLANS ARE ARTIST'S CONCEPTUAL DRAWINGS. SQUARE FOOTAGES ARE APPROXIMATE MAY VARY PER ELEVATION STYLE. WINDOW SIZES, SHAPES AND LOCATIONS MAY ALSO VARY PER ELEVATION STYLE. DUE TO OUR ONGOING COMMITMENT TO QUALITY; FEATURES, FINISHES, FLOOR PLANS, INFORMATION AND SPECIFICATIONS ARE SUBJECT TO CHANGE WITHOUT NOTICE.

FEATURES

INCLUDED

KITCHEN

- GE appliance package with 30" range, microwave and dishwasher in stainless
- Slab granite countertops with 6" splash with full height at range in three color choices
- Peerless single handle pullout faucet in chrome
- Birch cabinets in your choice of two colors with brush nickel pulls
- Amerisink stainless steel kitchen sink and Peerless pullout faucet

BATHS

- Birch cabinets in your choice of two colors with brush nickel pulls
- Cultured marble in white with 4" splash with a rectangle integral bowl sink
- Elongated toilets in the master and powder baths
- Peerless chrome plumbing fixture packages

SMART HOME FEATURES

- LED recessed can lights
- Interior low-VOC paint
- Tankless water heater
- Smart thermostat
- Dual zoned air conditioning per plan

EXTERIORS

- Concrete roof tile per elevation
- Exterior wall mounted fixtures in antique bronze

INTERIORS

- Hand laid 12" x 12" ceramic tile at entry, kitchen, nook and all baths and laundry
- 3 ¼" base molding with eased edge
- Cat5 phone wiring to bedrooms and kitchen
- RG6 wiring to family room and bedrooms
- Wayne Dalton garage doors with opener

AVAILABLE OPTIONS

CABINETRY

- Rich finish door style and hardware selections
- Built-in cabinetry

COUNTERTOPS

- Selections of natural granite slab or quartz countertops at kitchen with decorative edge choices
- Natural stone or quartz available at bath and laundry

APPLIANCES

- Upgrade GE appliances packages
- GE refrigerator options
- GE washer and dryers

ELECTRICAL

- Security, audio and home automation systems
- Upgraded lighting packages available
- Ceiling fan

FINISH TRIM

- Optional gas fireplace at great room
- Upgraded 5 ¼" base board
- Interior two-tone paint upgraded colors
- Closet organizers
- Framed mirror sections at all bathrooms

PLUMBING

- Selection of Delta plumbing fixture packages

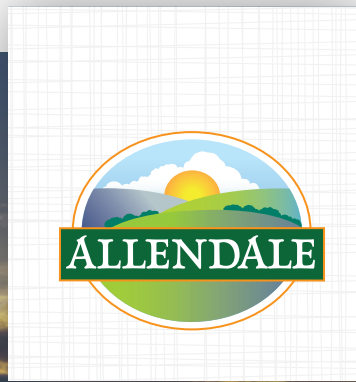
SITE MAP | ALLENDALE



-  Residence 1
-  Residence 2
-  Residence 3
-  Residence 4
-  Residence 5



THIS SITE PLAN IS NOT INTENDED AS A LEGAL DESCRIPTION. THE DEPICTION OF THE PROPERTY BOUNDARIES AND BUILDING LOCATIONS IS MEANT TO SERVE ONLY AS A GENERAL GUIDE. THE ACTUAL BOUNDARIES AND BUILDING LOCATIONS WILL DIFFER TO SOME EXTENT FROM THE ABOVE DEPICTION. ASK SALES REPRESENTATIVE FOR DETAILS.



THE MEADOWS AT ALLENDALE

290 Tanoak Street • Hollister • CA • 95023

(831) 204-0930 • TheMeadows@DeNovaHomes.com • DeNovaHomes.com

