

DELILAH
TRANSITIONAL I

MANUEL



BUILDERS

3 BEDROOM | 2 BATH



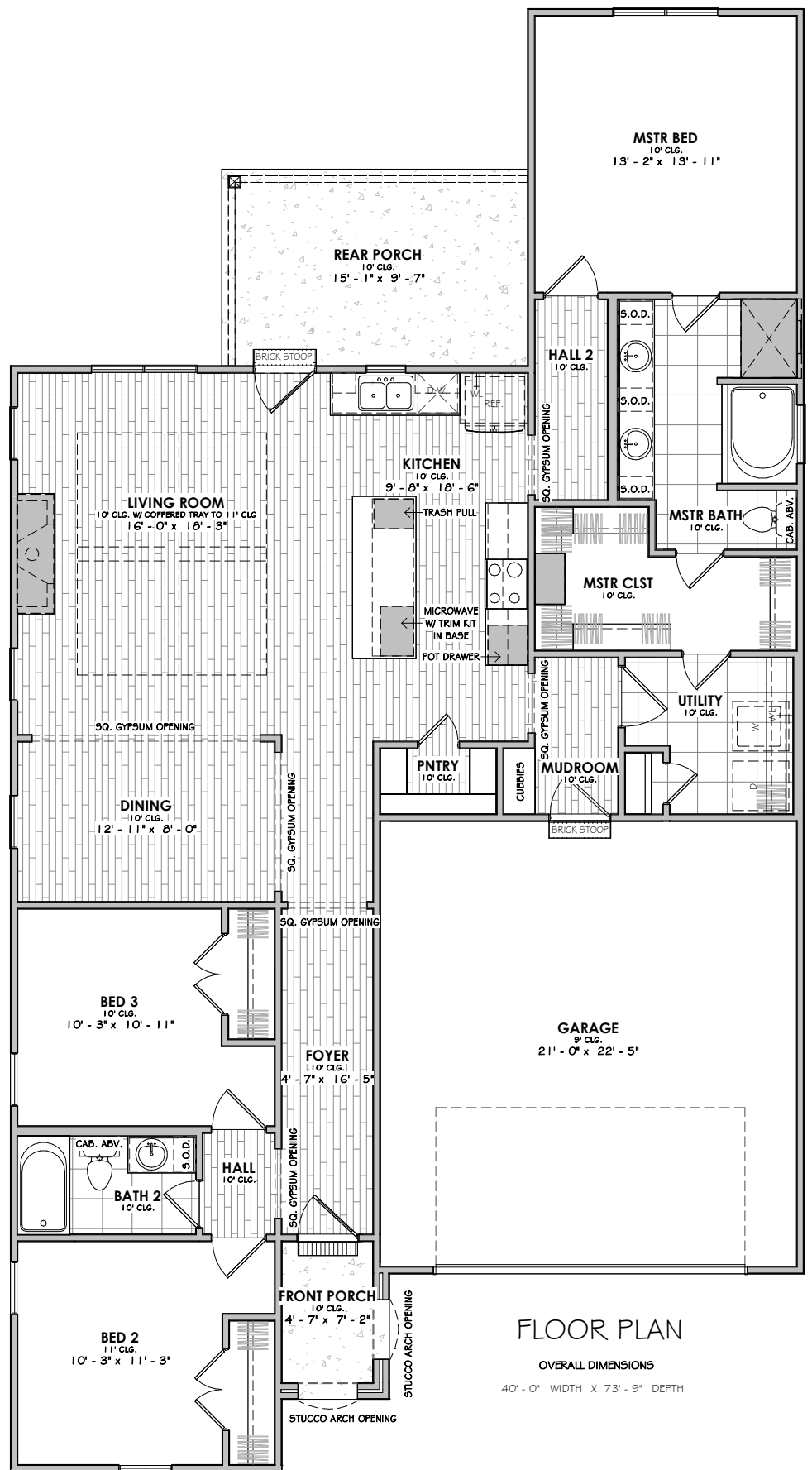
FRONT ELEVATION

10'-1" x 11'-1" x 11'-8" PLATE HEIGHT - 10' x 11' CLG.
7:12 & 12:12 ROOF PITCH

OPTIONAL FEATURES AS PER SPECIFICATIONS

SQUARE FOOTAGE

1st Floor	1721 SF
Garage	489 SF
Porch	186 SF
Under Roof	2396 SF
Uncovered	24 SF



FLOOR PLAN

OVERALL DIMENSIONS
40'-0" WIDTH X 73'-9" DEPTH

