

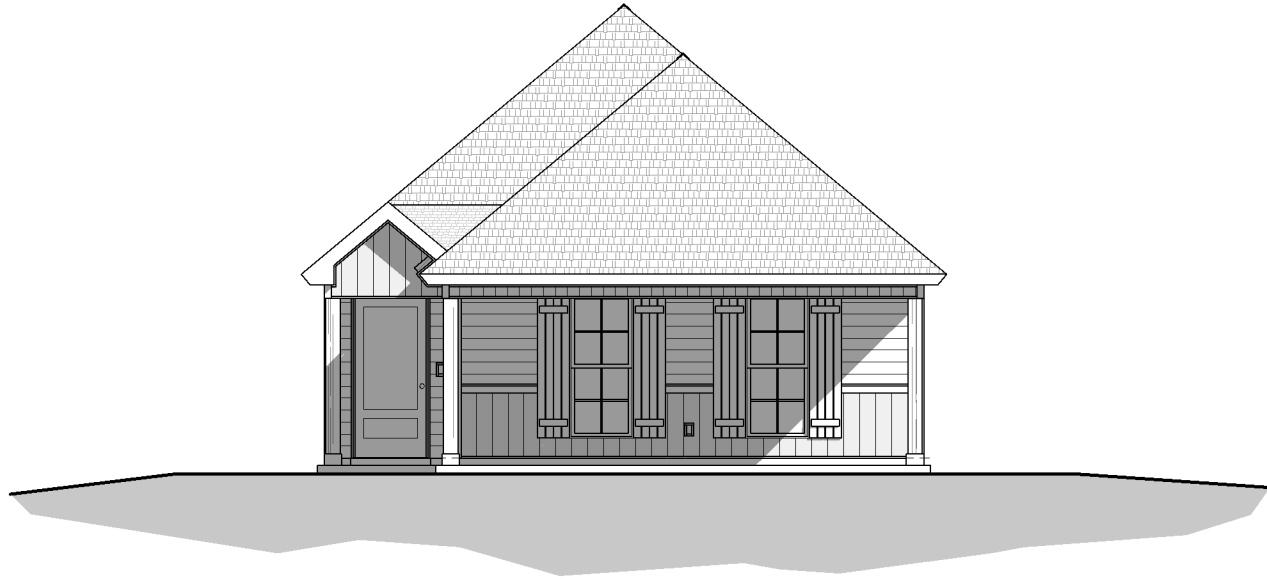
WESLEY  
FRENCH I

MANUEL



BUILDERS

3 BEDROOM | 2 BATH

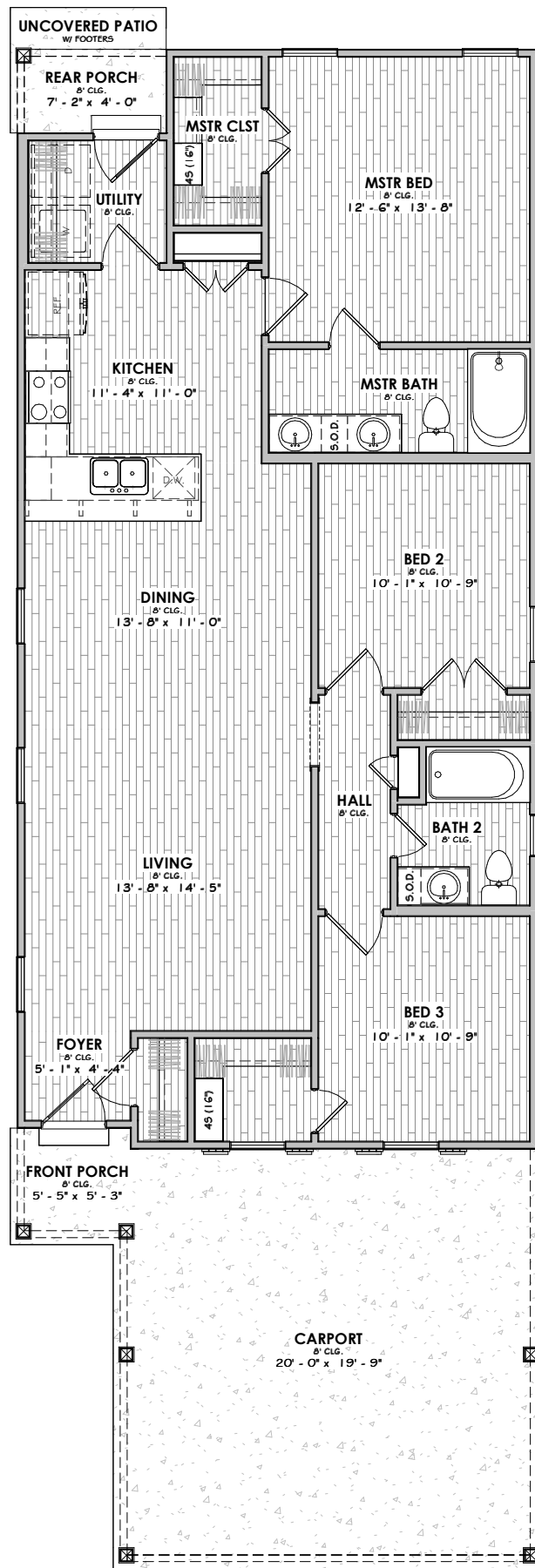


FRONT ELEVATION

8'-1" PLATE HEIGHT - 8' CLG.  
8:12 ROOF FITCH

**SQUARE FOOTAGE**

1st Floor	1275 SF
Carport	392 SF
Porch	57 SF
Under Roof	1724 SF
Uncovered	54 SF



FLOOR PLAN

OVERALL DIMENSIONS  
25' - 6 1/2" WIDTH X 74' - 8 1/2" DEPTH

