

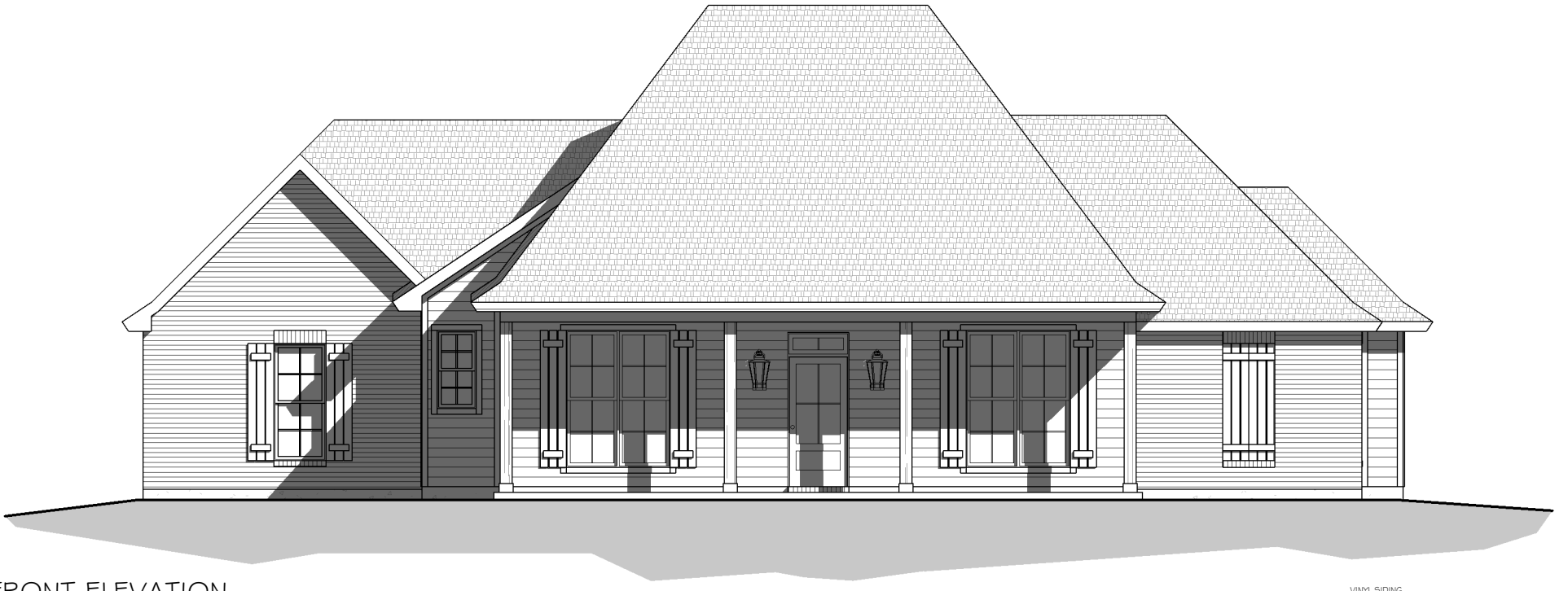
STERLING
FRENCH

MANUEL



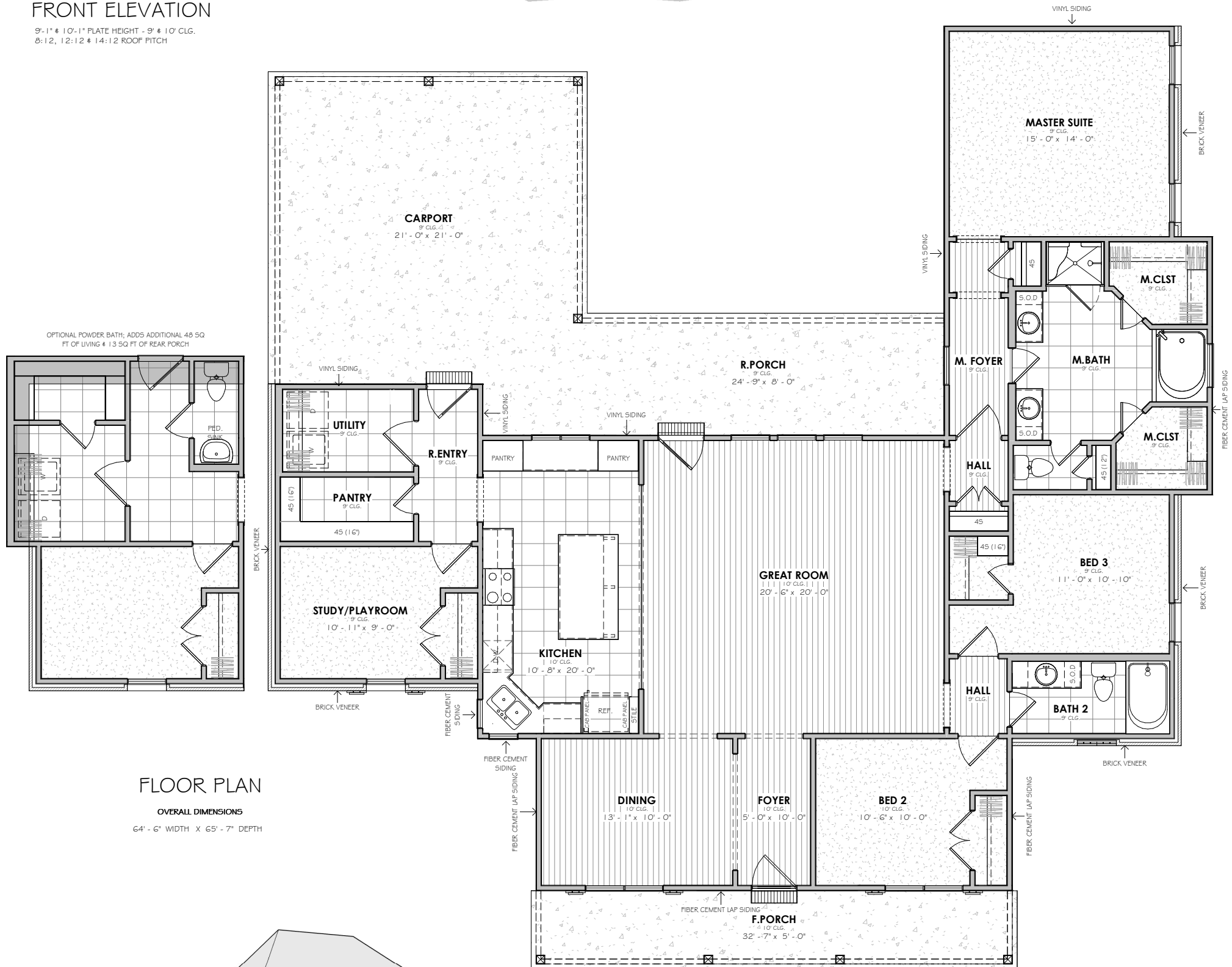
BUILDERS

3 BEDROOM | 2 BATH



FRONT ELEVATION

9'-1" x 10'-1" PLATE HEIGHT - 9' x 10' CLG.
8:12, 12:12 & 14:12 ROOF PITCH



FLOOR PLAN

OVERALL DIMENSIONS
64' - 6" WIDTH X 65' - 7" DEPTH

SQUARE FOOTAGE

1st Floor	2132 SF
Carport	465 SF
Porch	360 SF
Under Roof	2957 SF
Uncovered	61 SF



©2023 Manuel Builders. All Rights Reserved.
Manuel Builders reserves the right to make changes to homes. Colors, exterior finishes and square footage may vary from pictures and plans. Elevation renderings could include optional features that are not included in the base price.

manuelbuilders.com

WHERE DOING IT RIGHT,
STILL MATTERS