

STERLING FARMHOUSE

MANUEL



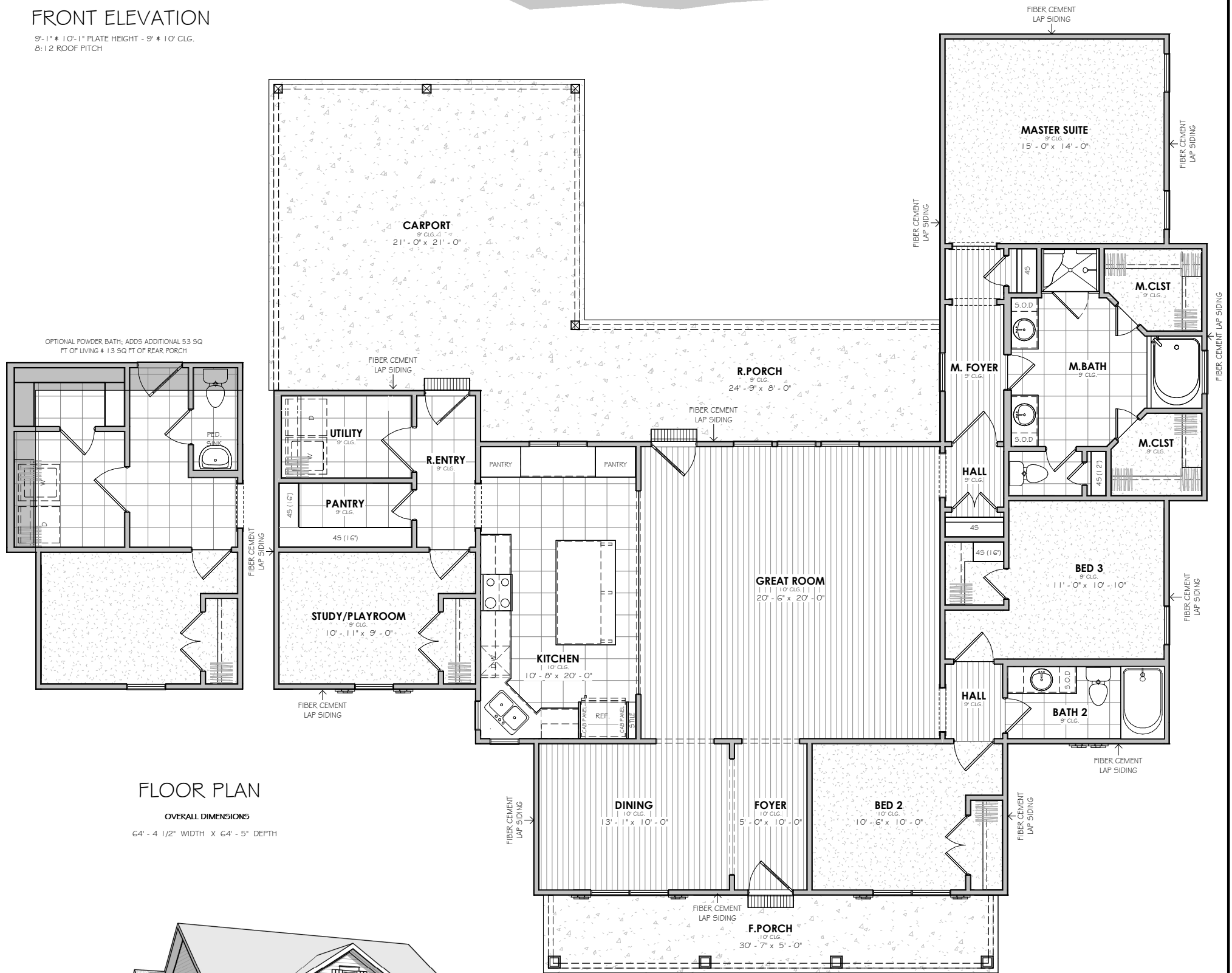
BUILDERS

3 BEDROOM | 2 BATH



FRONT ELEVATION

9'-1" x 10'-1" PLATE HEIGHT - 9' x 10' CLG.
8:12 ROOF FITCH



FLOOR PLAN

OVERALL DIMENSIONS
64' - 4 1/2" WIDTH X 64' - 5" DEPTH



SQUARE FOOTAGE

1st Floor	2097 SF
Carport	465 SF
Porch	350 SF
Under Roof	2912 SF
Uncovered	58 SF

©2023 Manuel Builders. All Rights Reserved.
Manuel Builders reserves the right to make changes to homes. Colors, exterior finishes and square footage may vary from pictures and plans. Elevation renderings could include optional features that are not included in the base price.

manuelbuilders.com

WHERE DOING IT RIGHT,
STILL MATTERS