

ST. CHARLES BAYOU

MANUEL



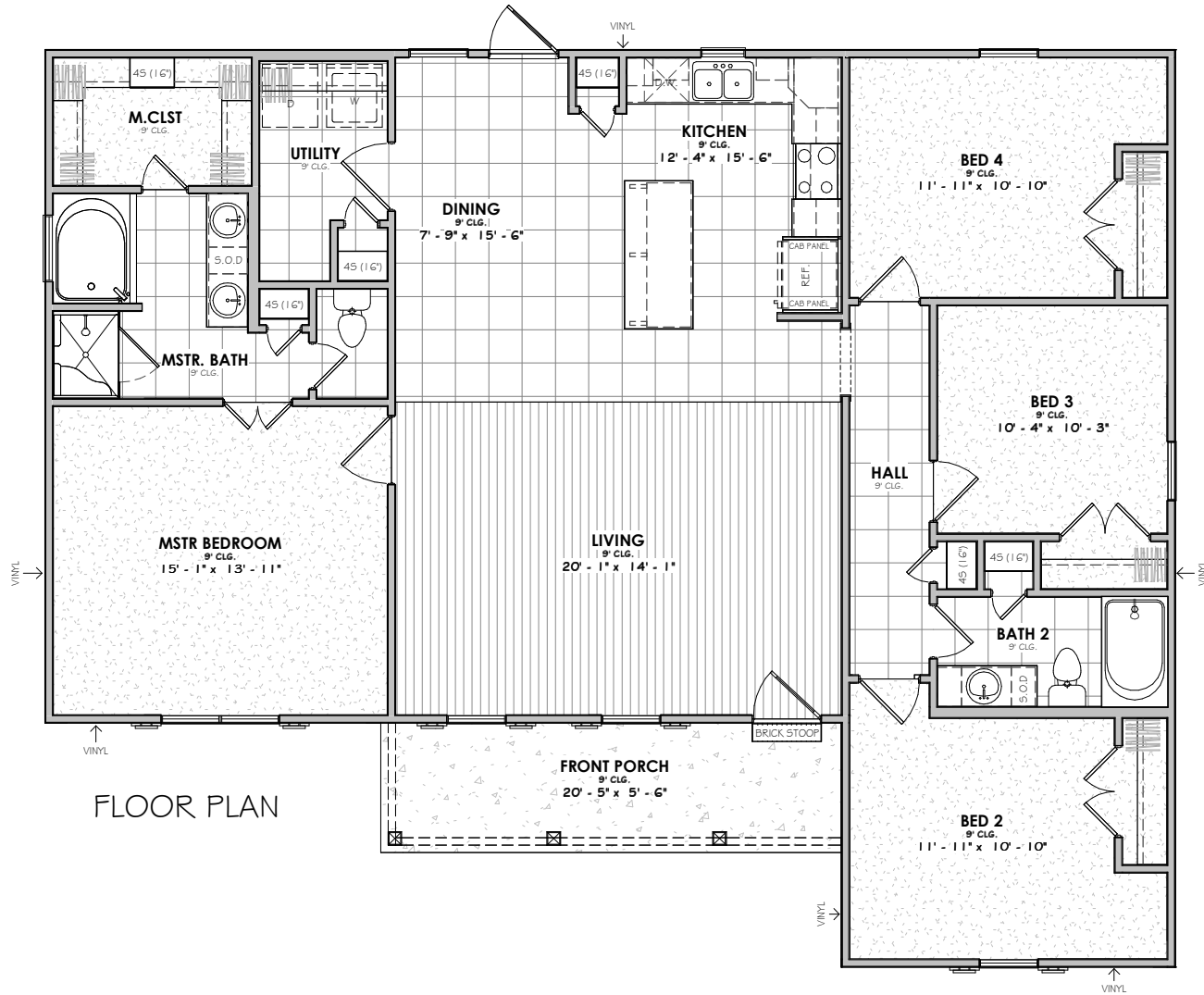
BUILDERS

4 BEDROOM | 2 BATH



FRONT ELEVATION

9'-1" PLATE HEIGHT
8:12 ROOF PITCH



FLOOR PLAN

OVERALL DIMENSIONS

50'-11" WIDTH X 41'-4" DEPTH

SQUARE FOOTAGE

1st Floor	1710 SF
Porch	112 SF
Under Roof	1822 SF
Uncovered	25 SF

