

Paisley
FRENCH

MANUEL



BUILDERS

3 BEDROOM | 2 BATH



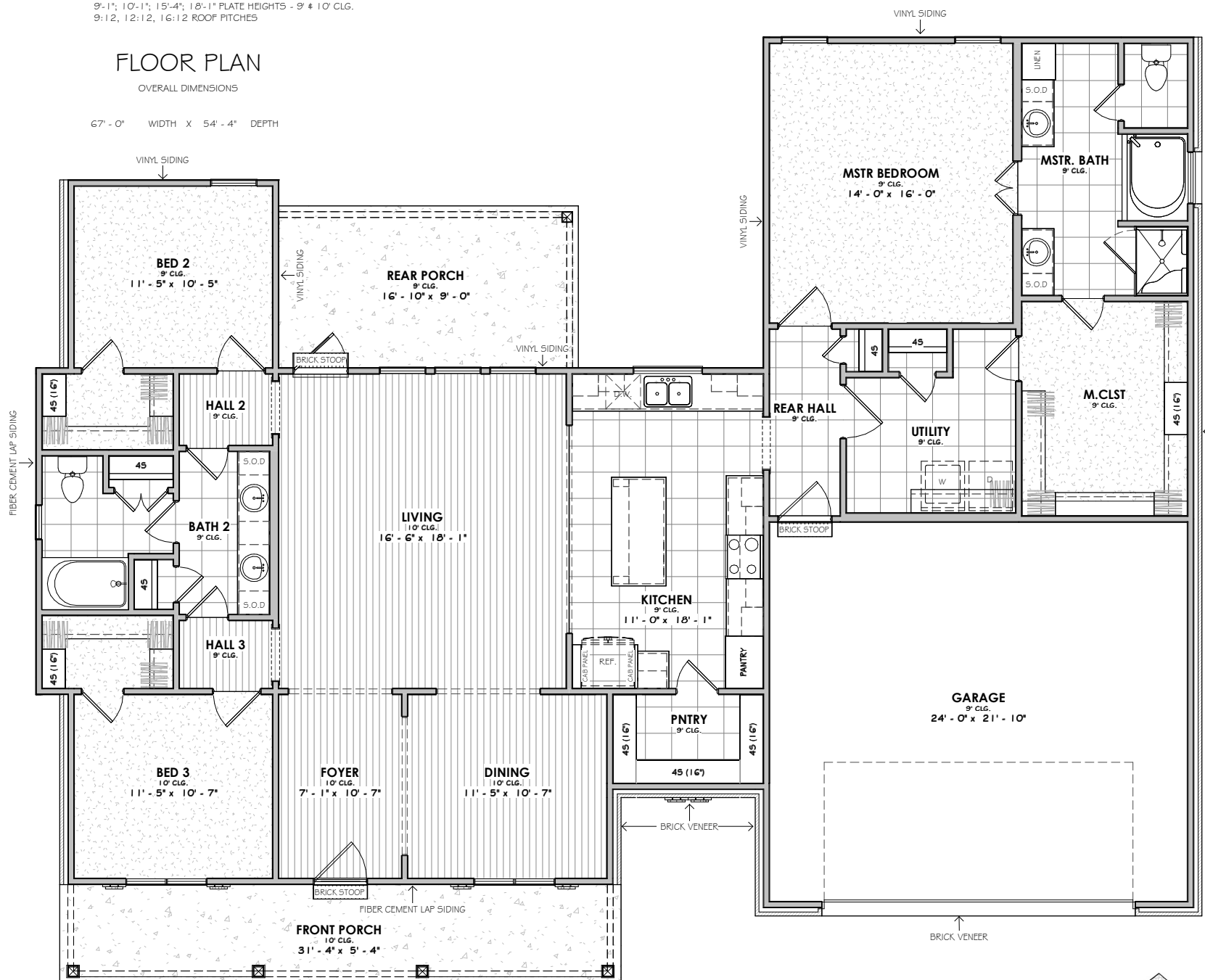
FRONT ELEVATION

9'-1"; 10'-1"; 15'-4"; 18'-1" PLATE HEIGHTS - 9' x 10' CLG.
9:12, 12:12, 16:12 ROOF PITCHES

FLOOR PLAN

OVERALL DIMENSIONS

67'-0" WIDTH X 54'-4" DEPTH



SQUARE FOOTAGE

1st Floor	2030 SF
Garage	568 SF
Porch	317 SF
Under Roof	2915 SF
Uncovered	40 SF

