

Paisley
FARMHOUSE

MANUEL



BUILDERS

4 BEDROOM | 2 BATH



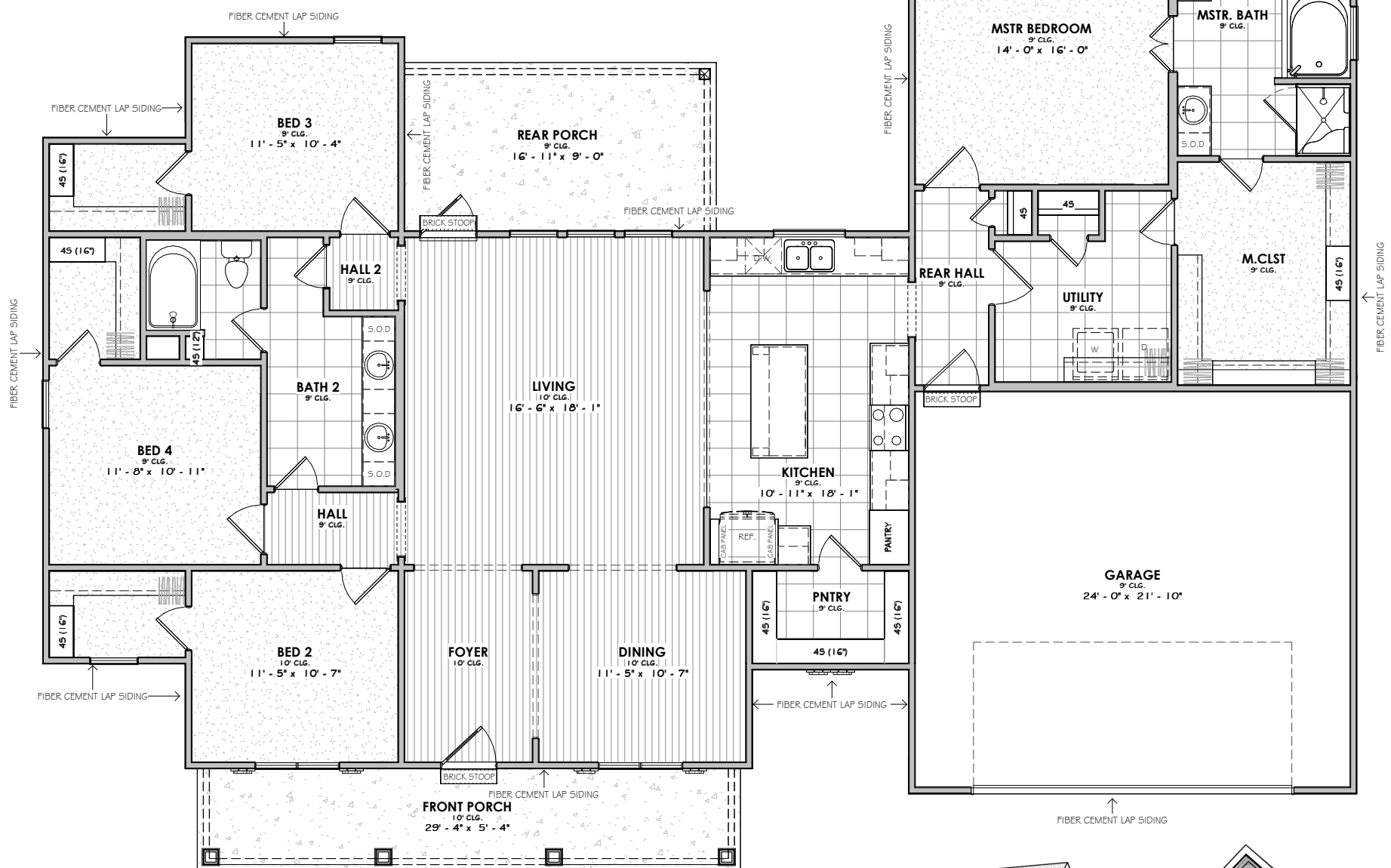
FRONT ELEVATION

9'-1"; 10'-1"; 15'-4"; 18'-1" PLATE HEIGHTS - 9' 4" 10' CLG.
3:12, 4:12, 10:12, 12:12 ROOF PITCHES

FLOOR PLAN

OVERALL DIMENSIONS

72'-7" WIDTH X 54'-4" DEPTH



SQUARE FOOTAGE

1st Floor	2194 SF
Garage	544 SF
Porch	306 SF
Under Roof	3045 SF
Uncovered	38 SF

