

Paisley FARMHOUSE

MANUEL



BUILDERS

3 BEDROOM | 2 BATH



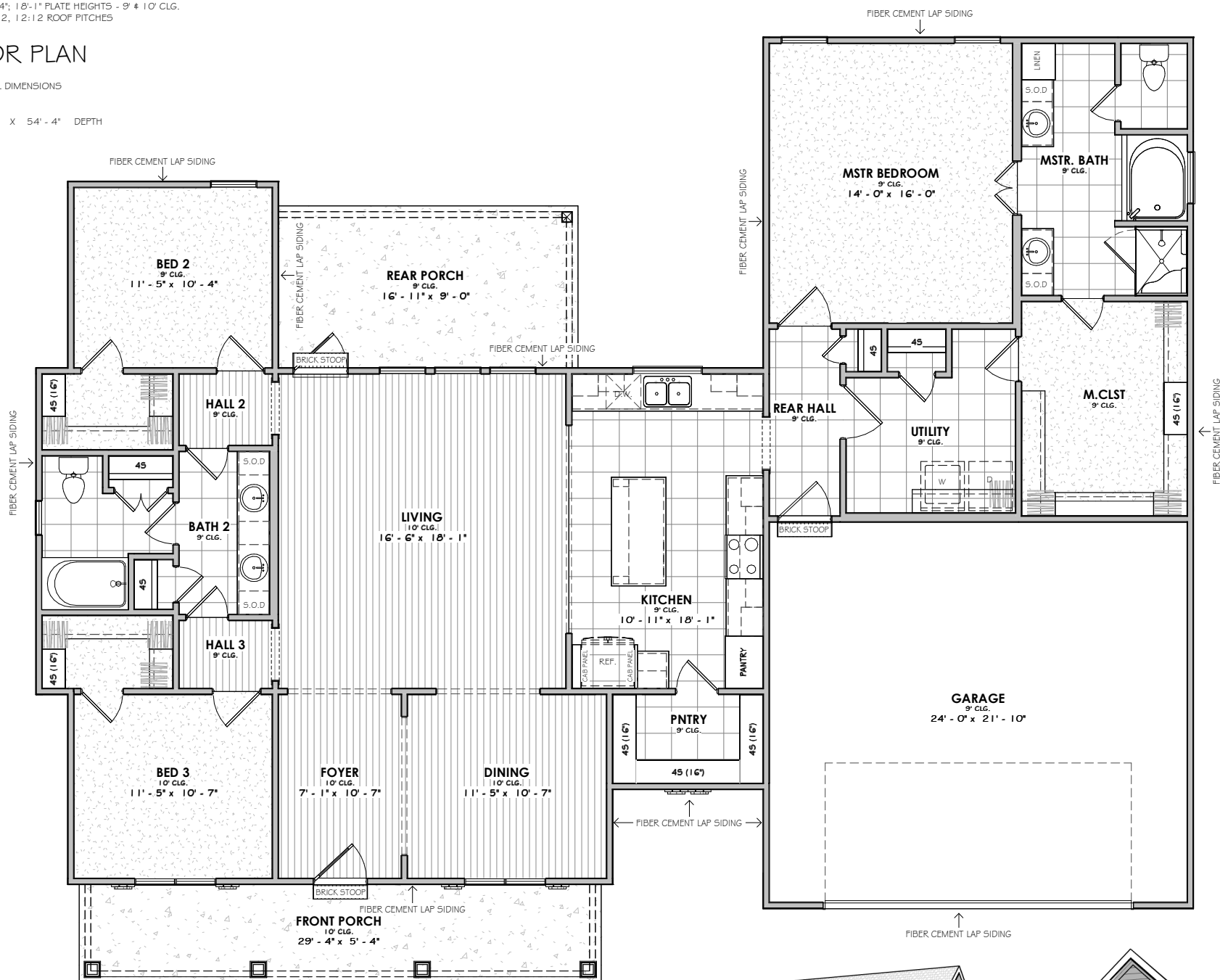
FRONT ELEVATION

9'-1"; 10'-1"; 15'-4"; 18'-1" PLATE HEIGHTS - 9' x 10' CLG.
3:12, 4:12, 10:12, 12:12 ROOF PITCHES

FLOOR PLAN

OVERALL DIMENSIONS

66' - 6 1/2" WIDTH X 54' - 4" DEPTH



SQUARE FOOTAGE

1st Floor	2000 SF
Garage	544 SF
Porch	306 SF
Under Roof	2850 SF
Uncovered	38 SF

