

VIOLA  
TRANSITIONAL

MANUEL



BUILDERS

3 BEDROOM | 2 BATH

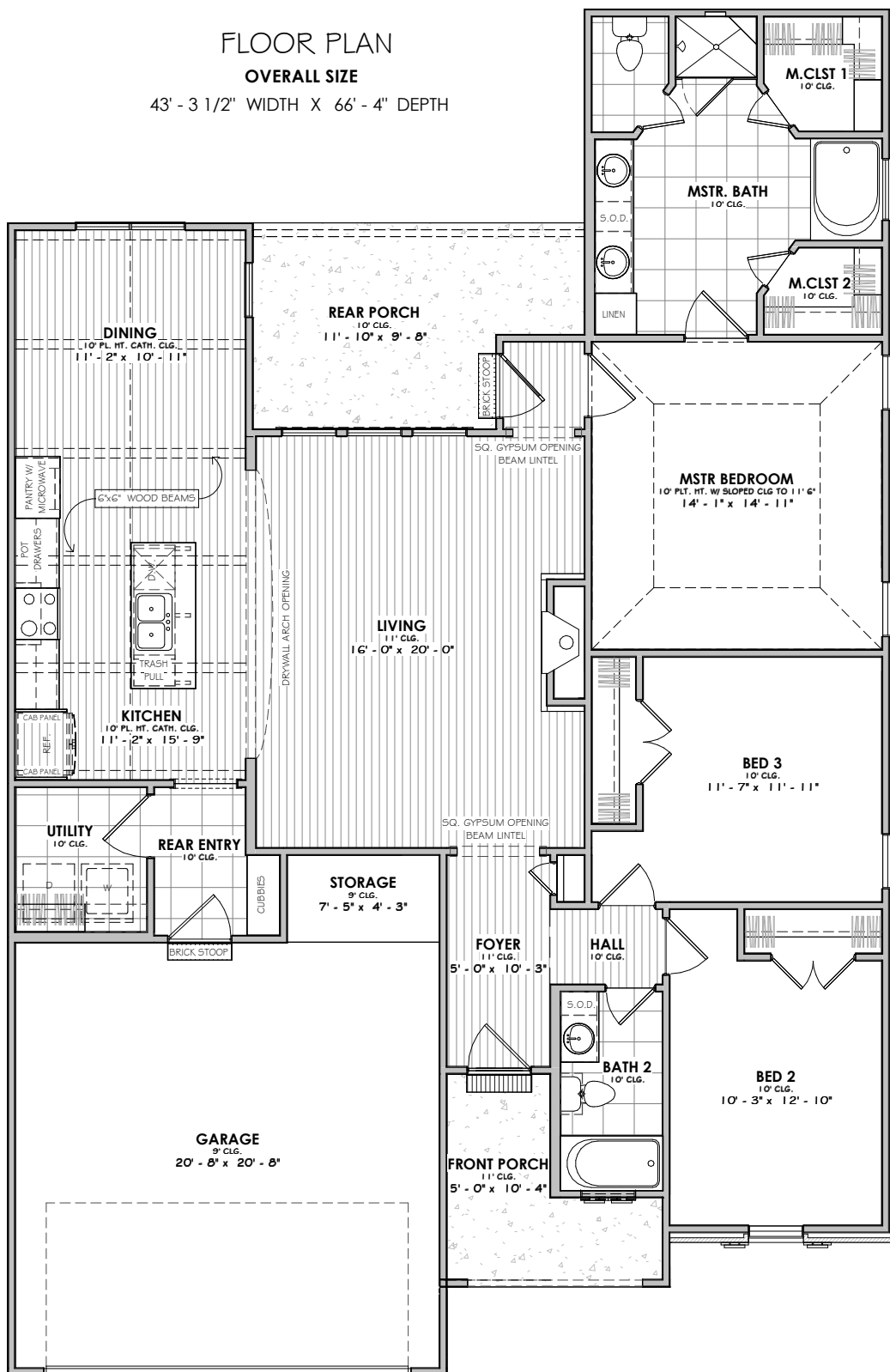


FRONT ELEVATION

10'-1"; 15'-1" PLATE HEIGHT 10'; 11' CEILINGS  
4:12; 9:12; 12:12 ROOF PITCH

FLOOR PLAN

OVERALL SIZE  
43' - 3 1/2" WIDTH X 66' - 4" DEPTH



SQUARE FOOTAGE

1st Floor	1767 SF
Storage	32 SF
Garage	447 SF
Porch	212 SF
Under Roof	2457 SF

