

ELISE  
BAYOU I

MANUEL



BUILDERS

3 BEDROOM | 2 BATH

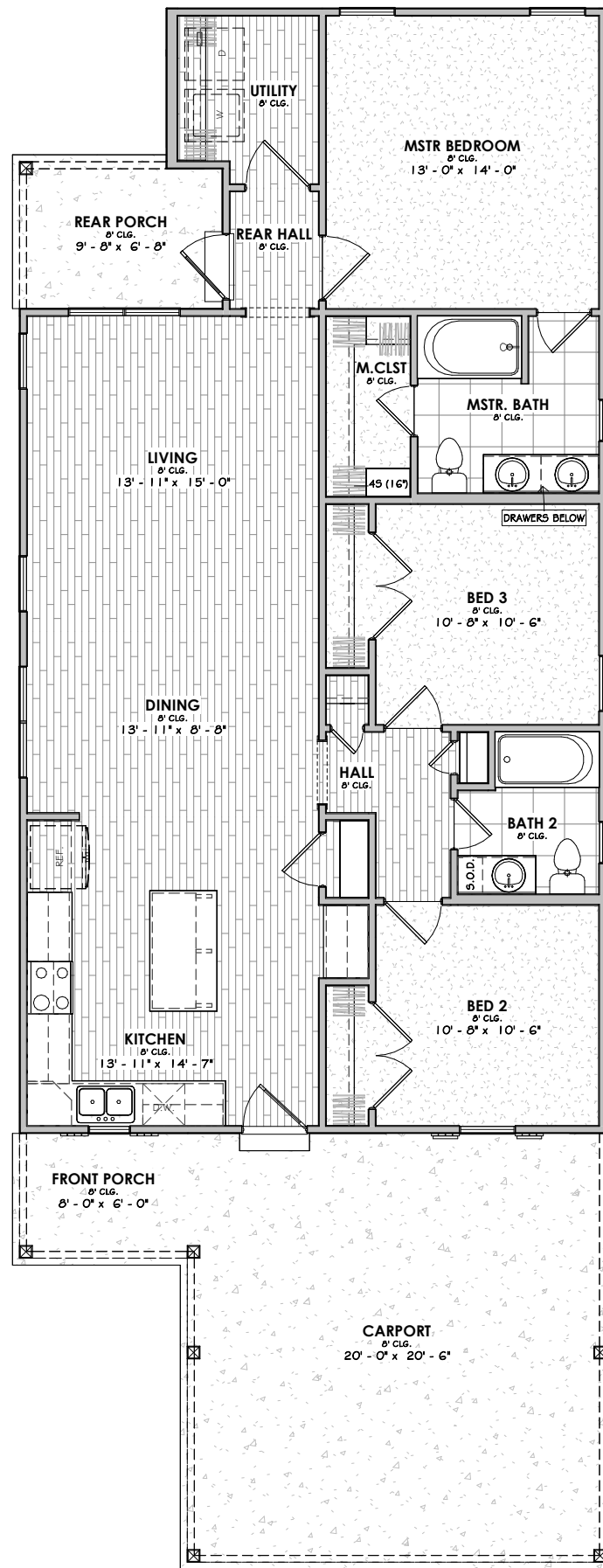


FRONT ELEVATION

8'-1" PLATE HEIGHT - 8' CLG.  
3 1/2:12, 8:12 ROOF PITCH

**SQUARE FOOTAGE**

1st Floor	1385 SF
Carport	409 SF
Porch	114 SF
Under Roof	1908 SF
Uncovered	44 SF



FLOOR PLAN

OVERALL DIMENSIONS  
28' - 8" WIDTH X 74' - 5 1/2" DEPTH

