

## elements 1800

1,805 SF

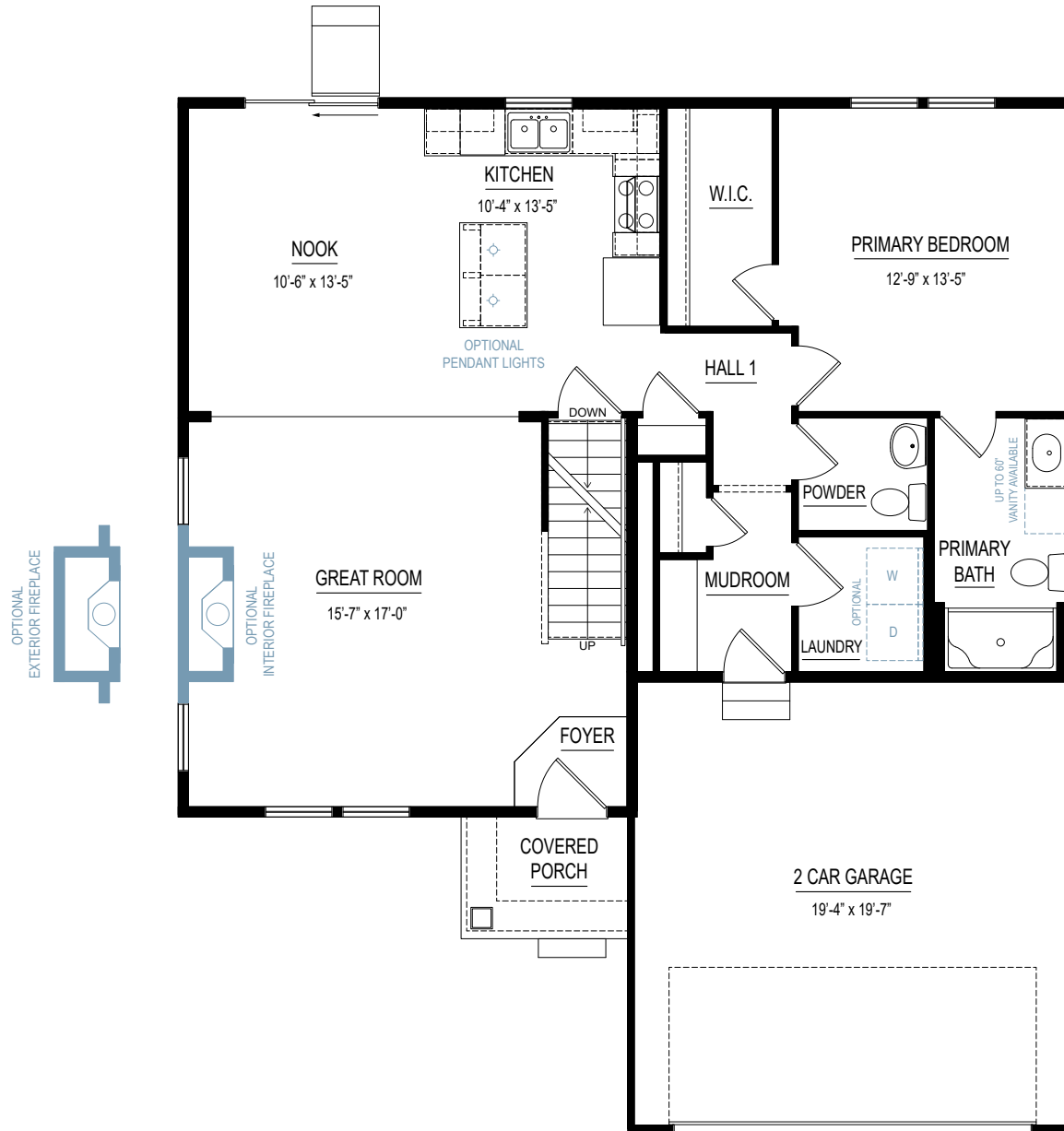
3-5 bedrooms

2.5-3.5 bathrooms

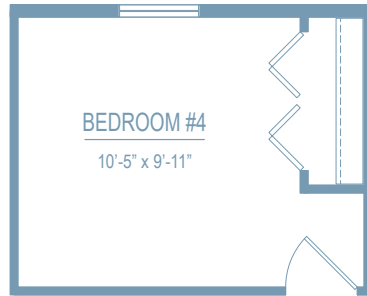
2-3 car attached garage



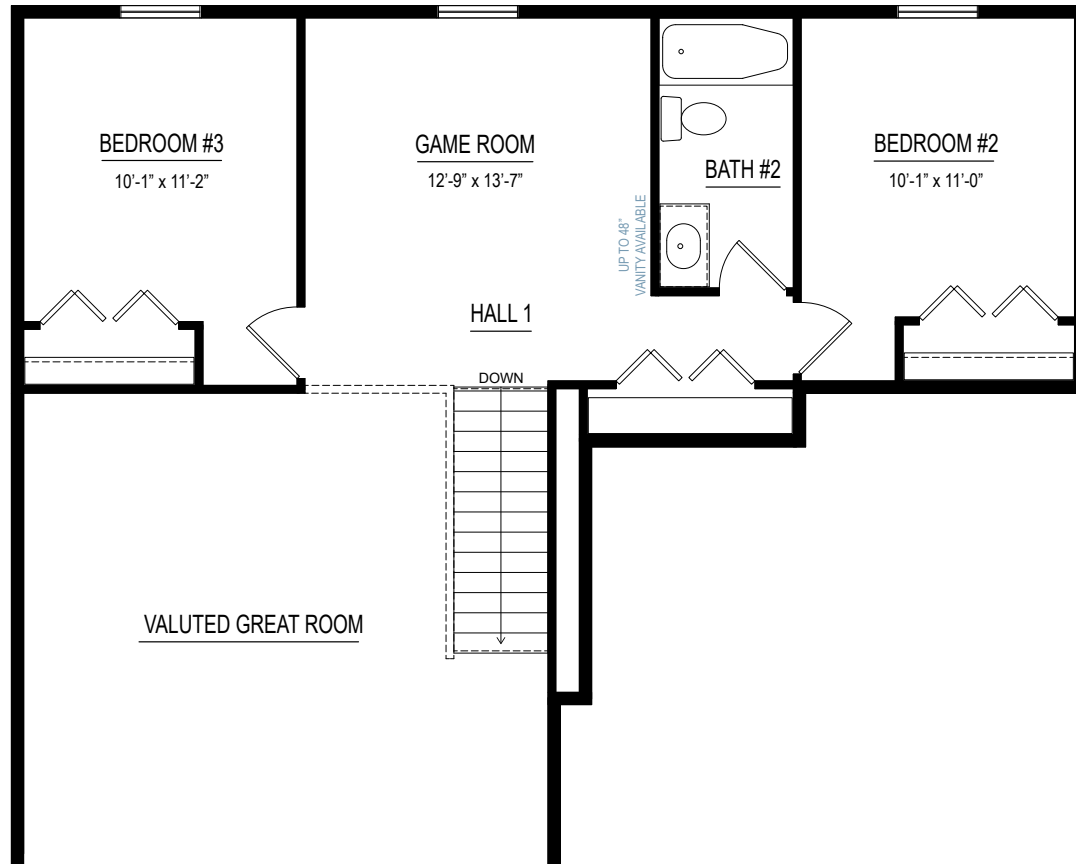
Allen Edwin Homes reserves the right to change or amend plans and specifications without prior notice. Specifications may vary per plan. All dimensions are approximate and are rounded down to the nearest 3". Information is deemed to be correct but not guaranteed. Copyright © 2015 Allen Edwin Homes. All rights reserved. The duplication, reproduction, copying, sale, licensing, or any other distribution or use of these drawings, any portion thereof, or the plans depicted here is strictly prohibited. Color rendering is the artist's interpretation of home. Details, products and colors may change or not be available. Please see CAD drawings of elevations for actual specifications available.



# FIRST FLOOR

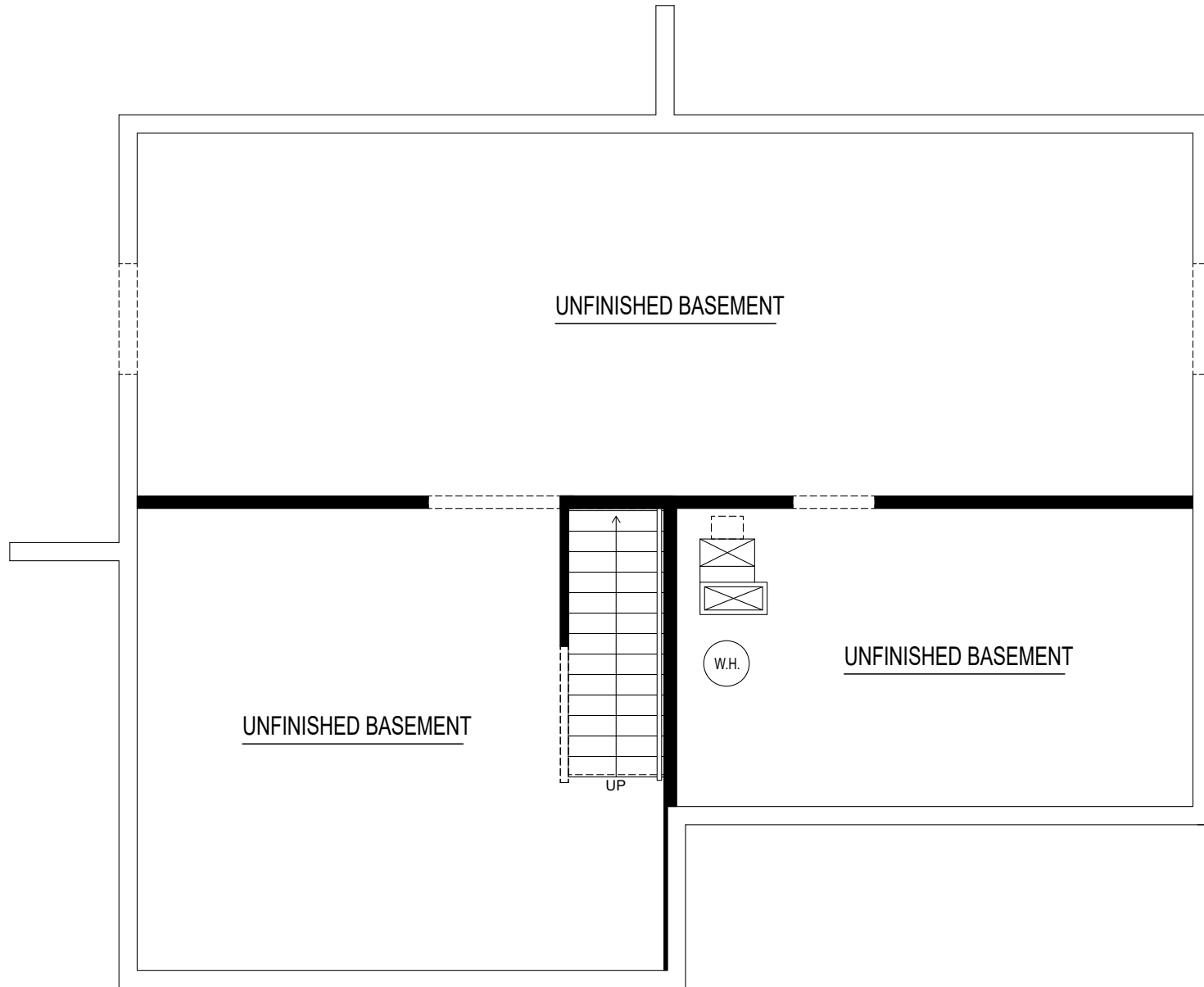


SMART SPACE BEDROOM #4 OPTION

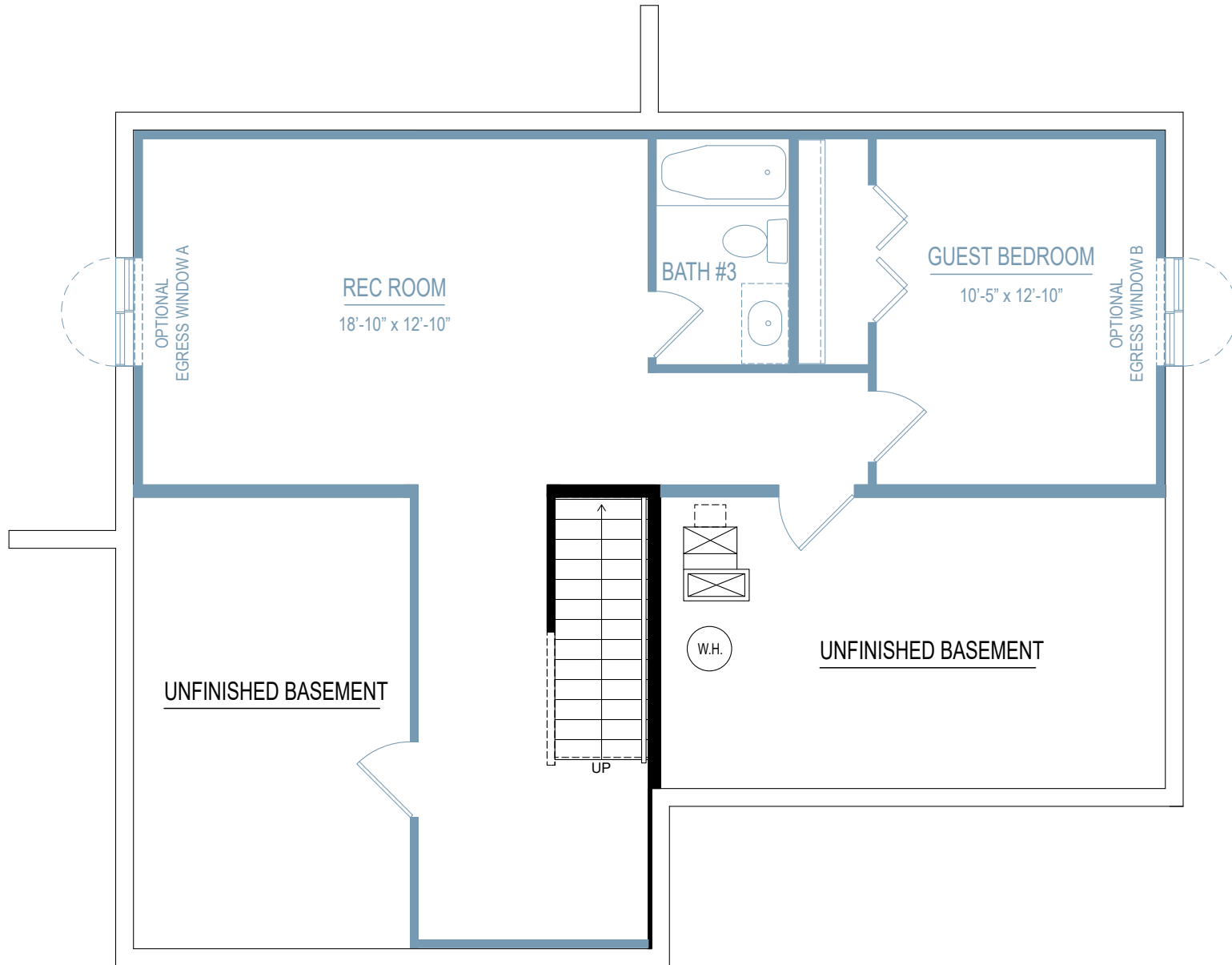


# SECOND FLOOR





# UNFINISHED BASEMENT



# FINISHED BASEMENT



Elevation A1



Elevation A2



Elevation A3

# Elevation A



Elevation B1



Elevation B2



Elevation B3

Elevation B



Elevation C1



Elevation C2



Elevation C3

Elevation C





Elevation D2



Elevation D3

# Elevation D



Elevation E2



Elevation E3

# Elevation E



Elevation F2



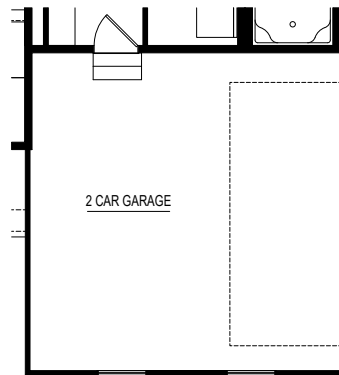
Elevation F3

# Elevation F



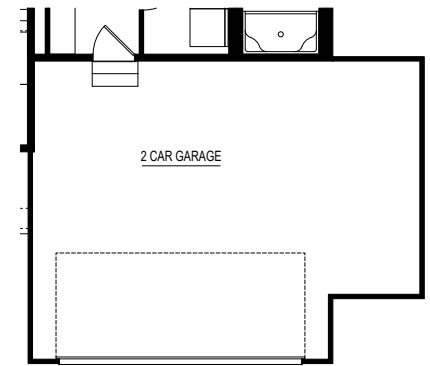
FRONT VIEW

2 CAR SIDE LOAD GARAGE OPTION



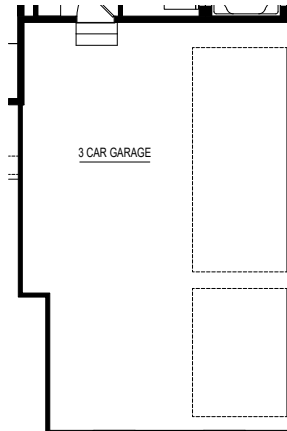
FRONT VIEW

6' X 16' GARAGE BUMP OPTION



FRONT VIEW

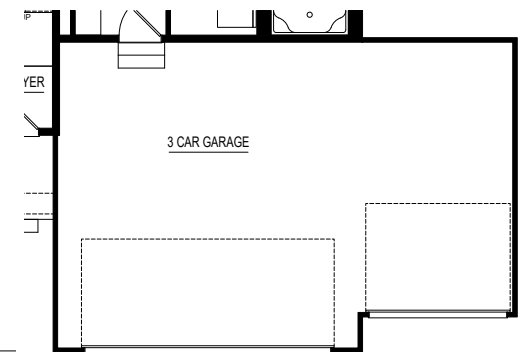
3 CAR SIDE LOAD GARAGE OPTION

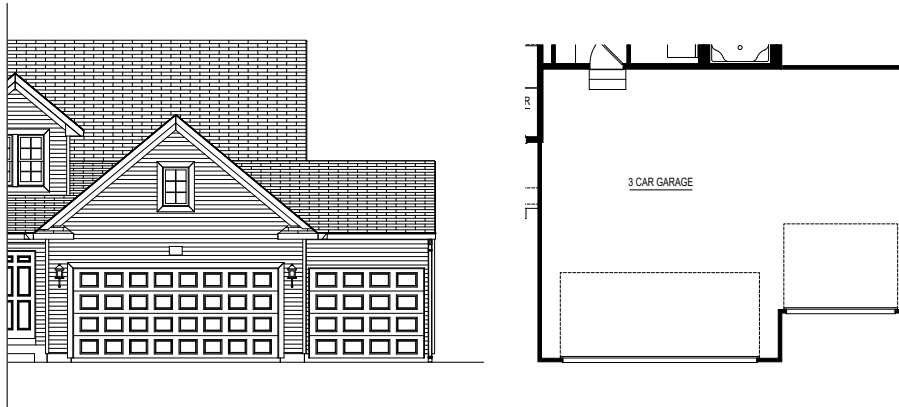


FRONT VIEW

3 CAR GARAGE 10' X 18' OPTION

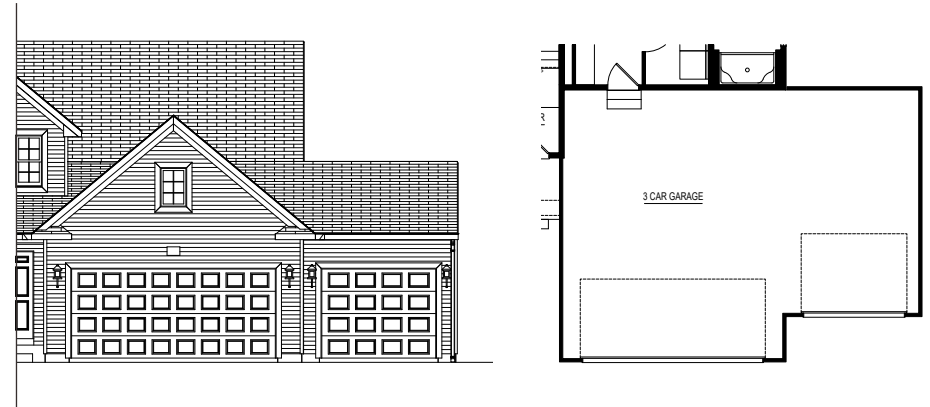
\*NOT COMPATIBLE WITH 20' X 24' GARAGE OPTION





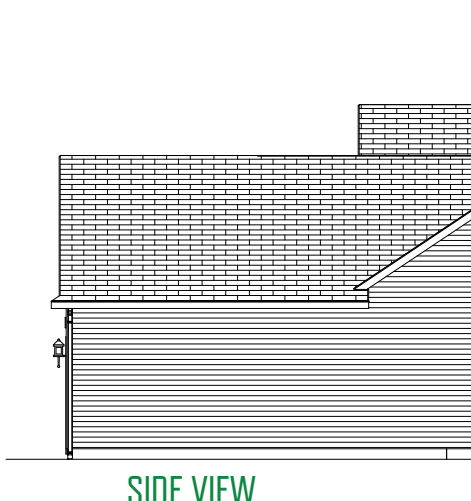
FRONT VIEW

10' X 20' 3 CAR GARAGE OPTION  
\*20' X 24' GARAGE OPTION REQUIRED



FRONT VIEW

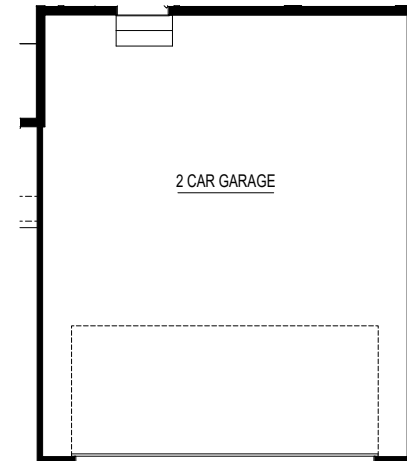
12' X 20' 3 CAR GARAGE OPTION  
\*20' X 24' GARAGE OPTION REQUIRED



SIDE VIEW



FRONT VIEW



20' X 24' GARAGE OPTION