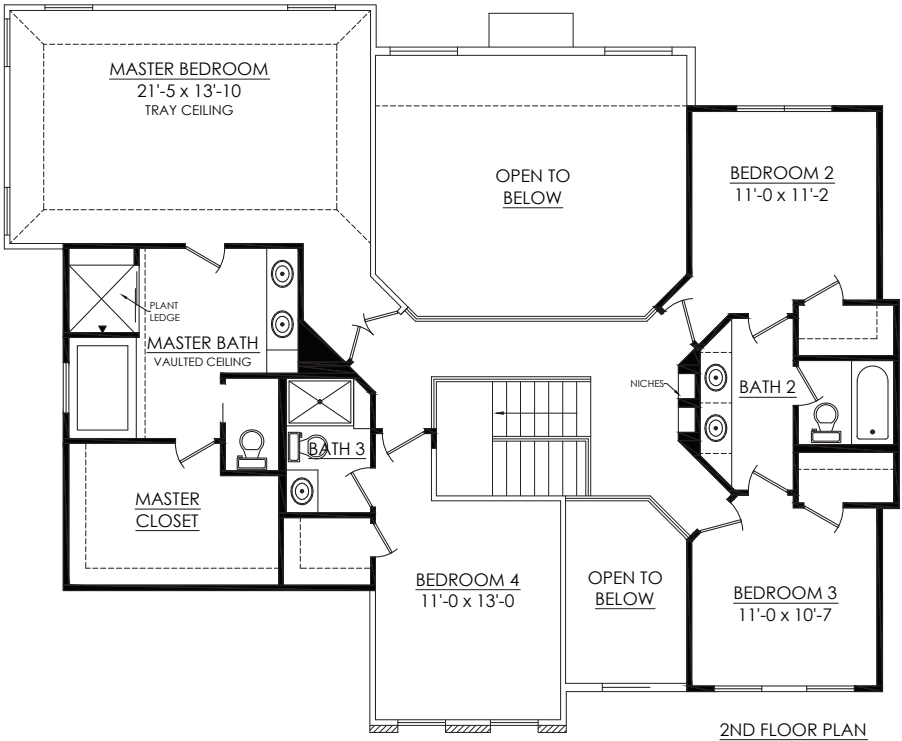
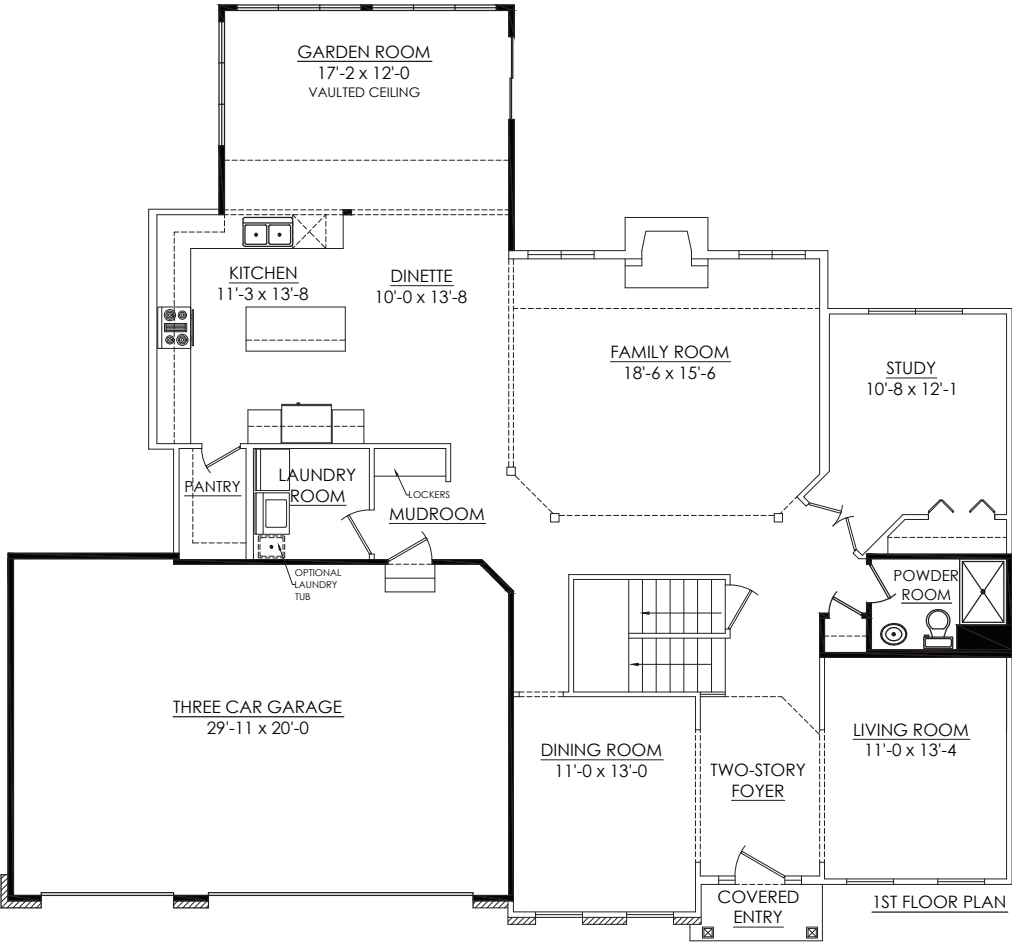


Manchester Options

- Available Options:
- Powder room shower
 - Jack-N-Jill bathroom +13 sq. ft.
 - 3rd Full bathroom
 - Garden room +220 sq. ft.
 - 9' Basement
 - 3-Car garage



Use this QR Code to find more information about Overstreet Builders' Manchester model and other homes.



Note: All renderings and landscaping are artists' conceptions only. All dimensions are approximate and are subject to change. In our continuing effort to provide for a superior quality product, we reserve the right to substitute items of equal or greater value. All designs and illustrations are property of Overstreet Builders, Inc. and are copyrighted under the same name. Any form of use or reproduction without written consent of Overstreet Builders, Inc. is prohibited. © 2019 Overstreet Builders, Inc.



Elevation C

Manchester

4 Bedrooms | 2.5 Bathrooms | 2-Car Garage | 2,962+ square feet

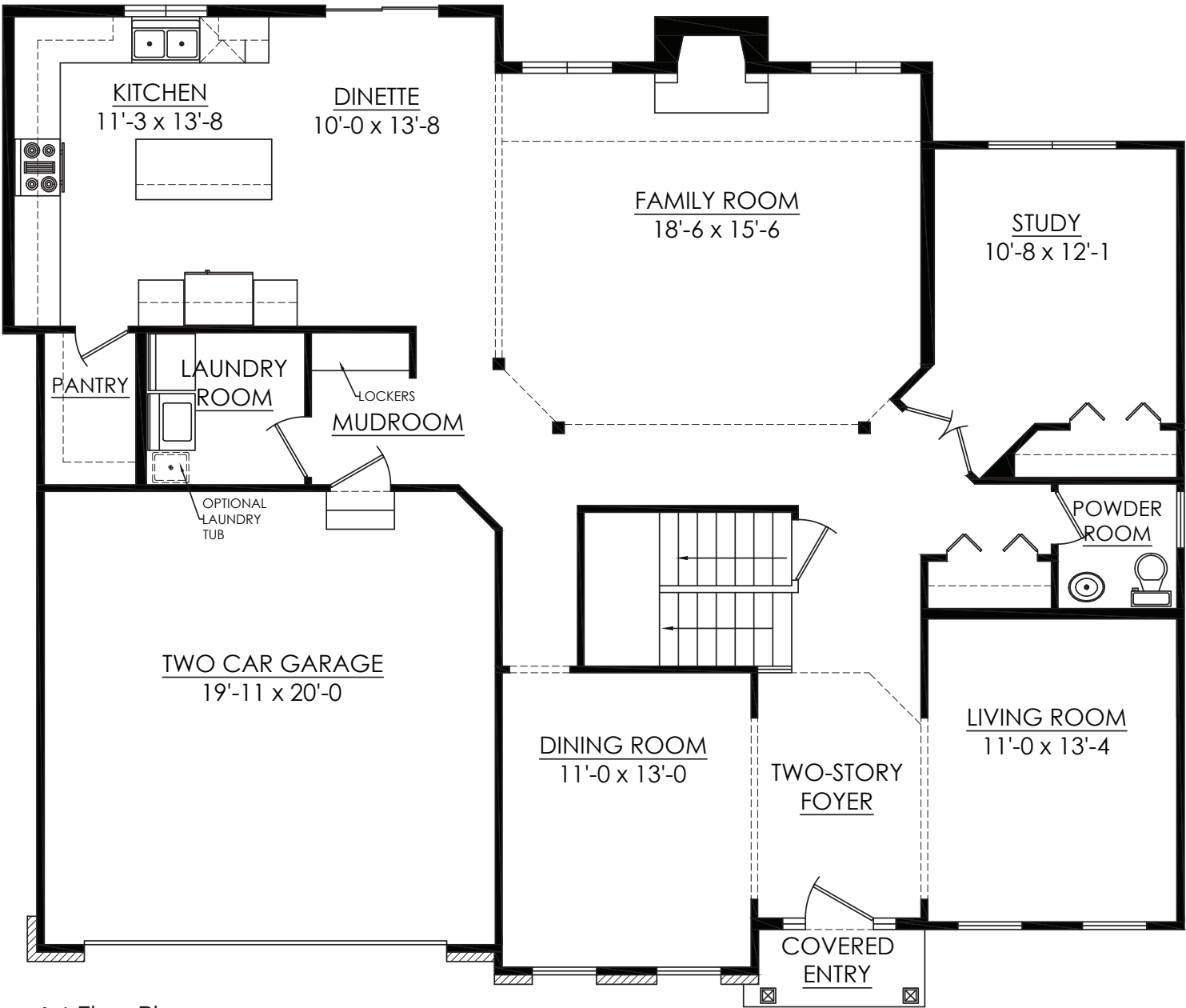


Elevation B



Elevation A





1st Floor Plan
1,608 sq. ft.

- The Manchester features:
- 2-Story foyer and family room

Formal living and dining rooms

First floor study

Large walk-in pantry

2-Car garage

His and her vanity



2nd Floor Plan
1,354 sq. ft.

Overstreet Builders specializes in custom built homes in Chicago's suburbs and has been family owned and operated for over 55 years. We are dedicated to quality, integrity, and superior craftsmanship. We work with you every step of the way, starting with the design process through the final stages of construction.

