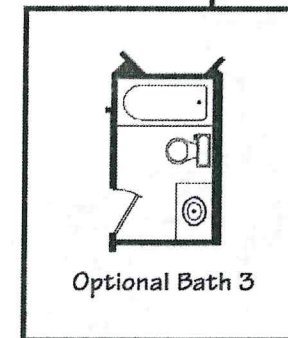
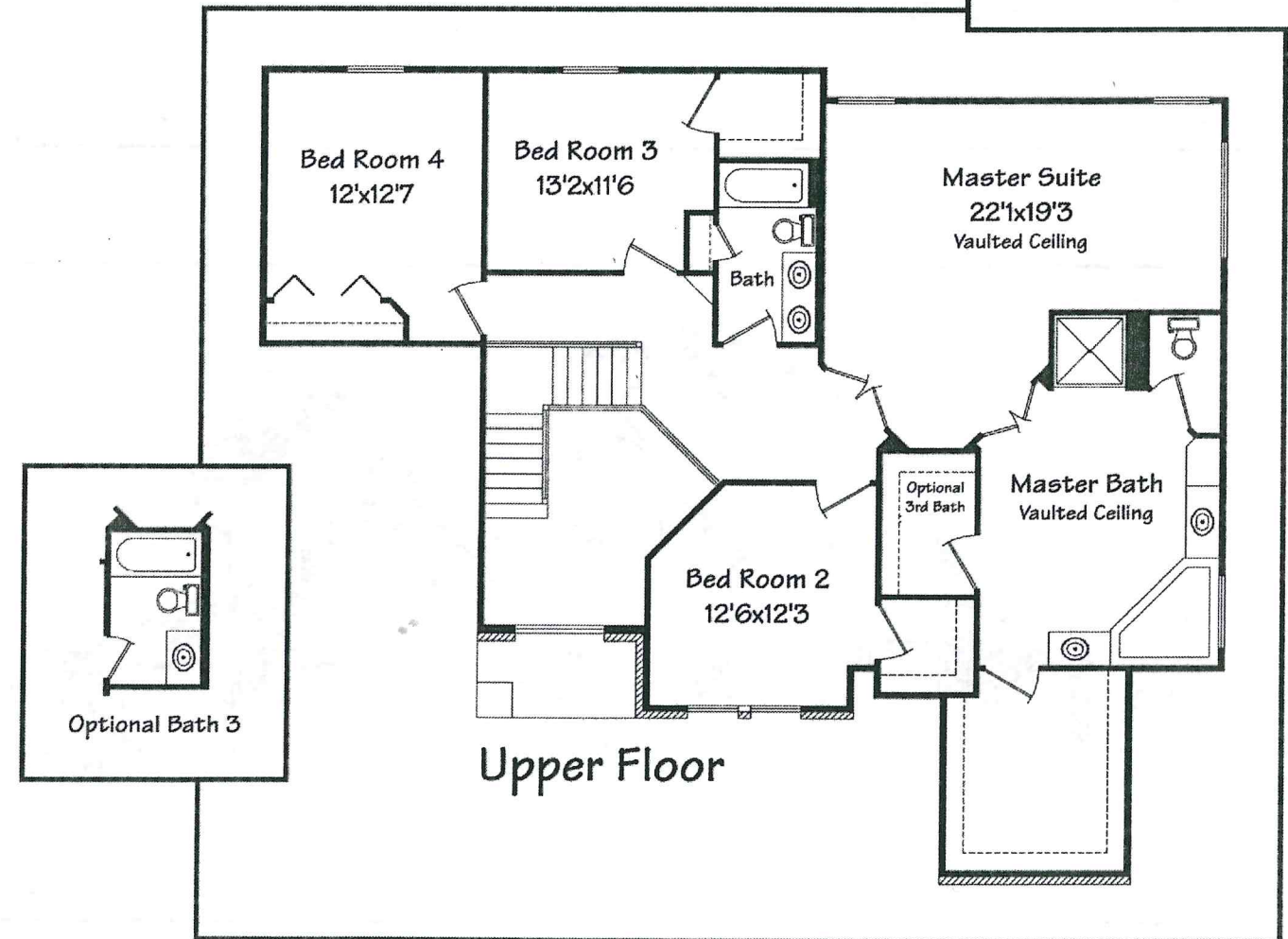
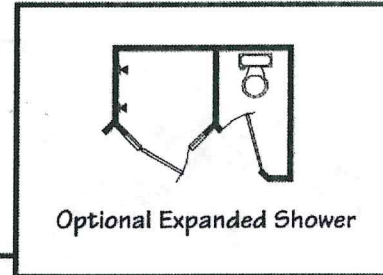
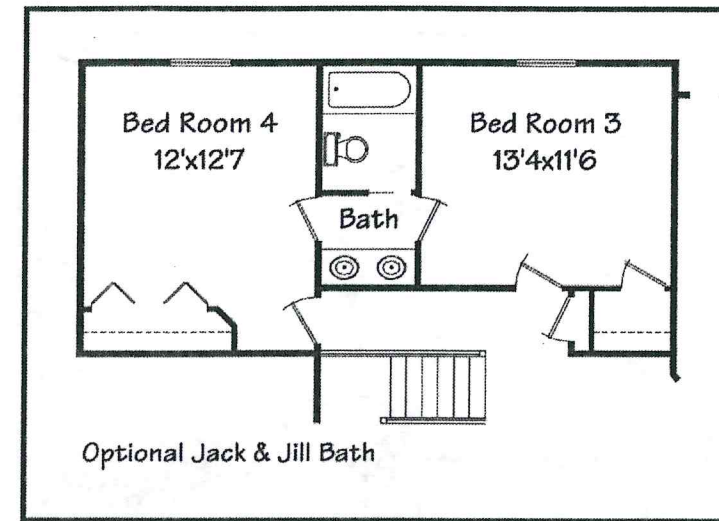
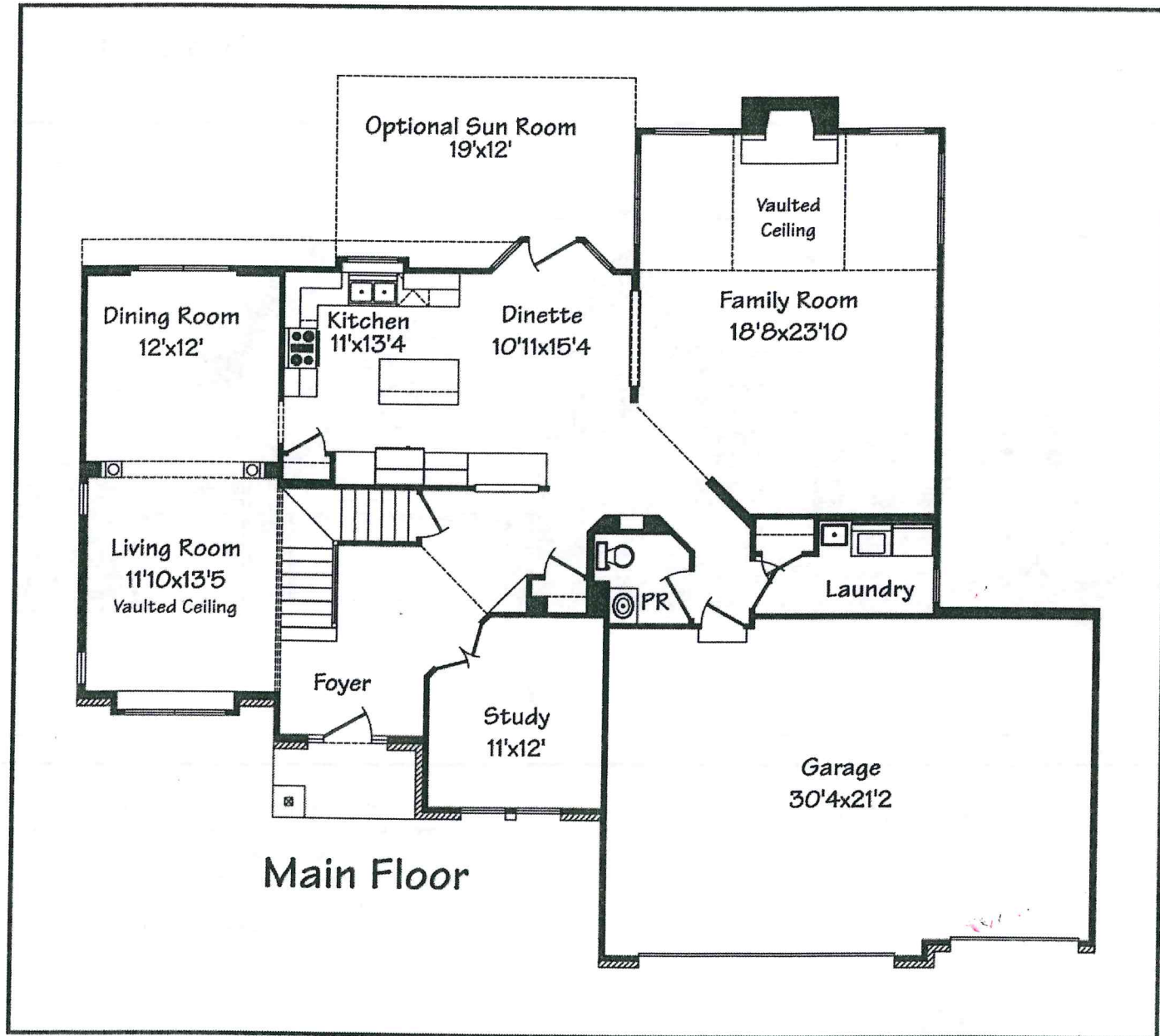


Carlisle Plans



The Carlisle boasts an impressive brick elevation with a 3 car garage. The interior features an open floor plan loaded with architectural detail, including art niches, look thrus and columns. The Carlisle's gourmet kitchen is adjacent to the oversized family room with beautiful vaulted ceiling. The upstairs includes 4 bedrooms and 2 baths with an optional Jack & Jill style bath and 3rd full bath option.

