



**NEW LEAF**  
BUILDERS

MODERN FARMHOUSE

# The Julian

A practical single-story living space designed for convenience. Featuring three bedrooms and a dedicated study on the main level, it offers a functional layout for everyday living. The open living space is infused with natural light, creating a bright and inviting atmosphere. What makes the Julian unique is the optional loft, providing the flexibility to add a fourth bedroom or adapt the space to suit changing needs. This thoughtful design allows for easy customization, whether for accommodating guests or creating a home office.

1,782 +655 SQ FT	SQUARE FEET OPTIONAL BONUS SPACE
3	BEDROOMS
2	BATHROOMS
2 Car	GARAGE
1	STORIES



**Schedule your appointment today**

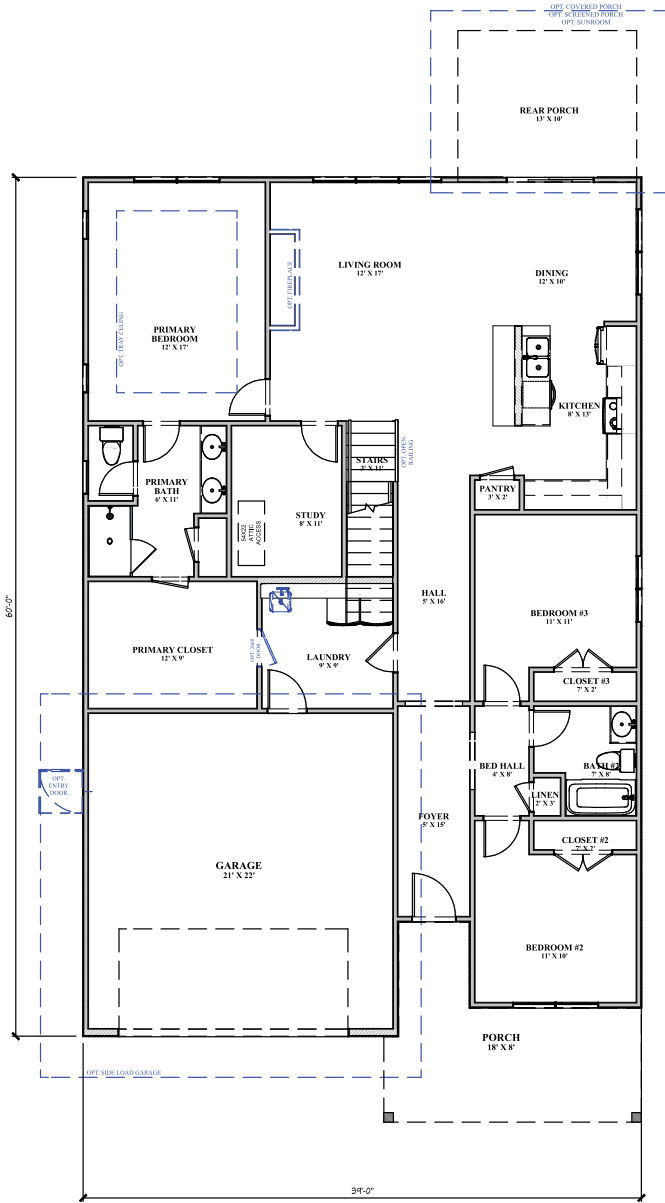
Contact Randall Sandin  
843.209.9667 | [randall@newleafsc.com](mailto:randall@newleafsc.com)

**Learn more at**  
[newleafsc.com](http://newleafsc.com)

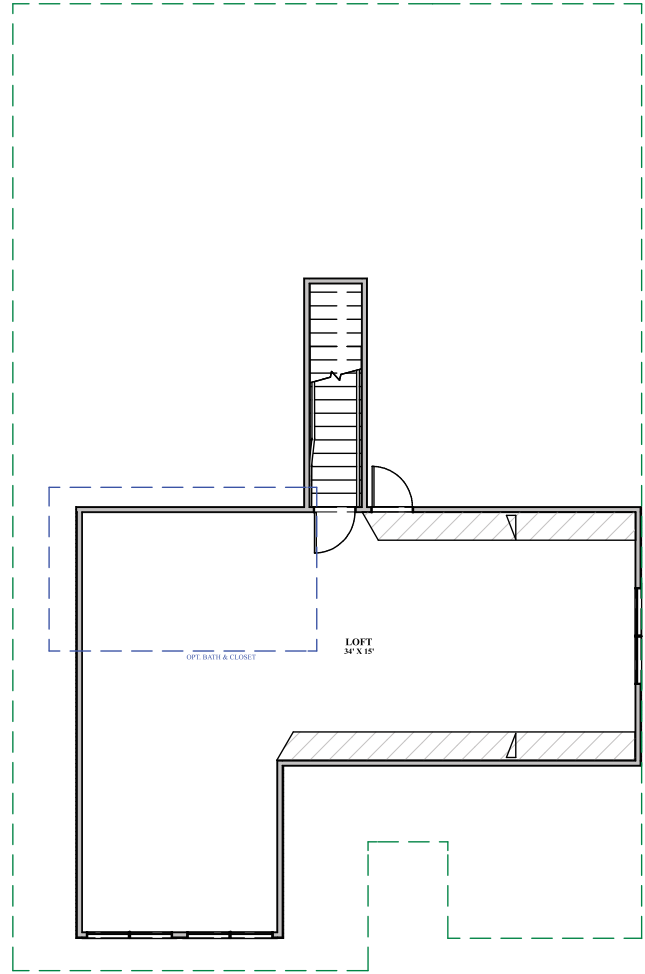
Rendering shown for graphic purposes, actual elevations may vary. All plans, pricing, items and features subject to change without notice.



# The Julian - Modern Farmhouse



FIRST FLOOR



SECOND FLOOR

Schedule your appointment today

Contact Randall Sandin  
843.209.9667 | randall@newleafsc.com

Learn more at  
[newleafsc.com](http://newleafsc.com)

