



NEW LEAF
BUILDERS

 **nexton**

THE FRONTALE SERIES

The Hortus I

This 1,822 square foot open floor plan blurs the lines between indoor and outdoor living. A three bedroom home that is perfect for entertaining guests, and embraces the open living concept that so many families desire. The master suite features a private retreat tucked away from the primary living spaces and guest rooms, yet offers direct access to the courtyard. With multiple options for large sliding doors, natural sunlight breathes life into the interior spaces.

1,822 SQUARE FEET

3 BEDROOMS

2.5 BATHROOMS

2 Car GARAGE

1 STORIES



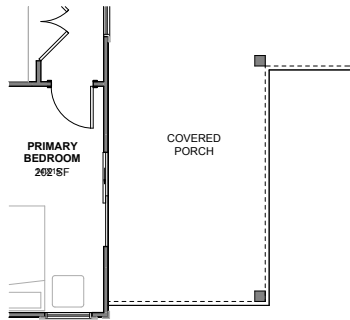
learn more at newleafsc.com/nexton

*Rendering shown for graphic purposes, actual elevations may vary.
All plans, pricing, items and features subject to change without notice.

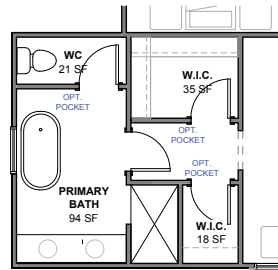
The Hortus I



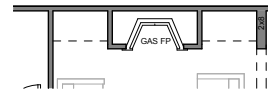
THE FRONTALE SERIES



WRAPPED PORCH OPTION



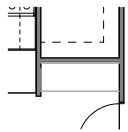
ALTERNATE PRIMARY BATH OPTION



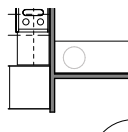
FIREPLACE OPTION



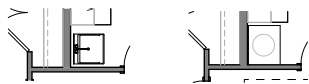
DINING WINDOW OPTION



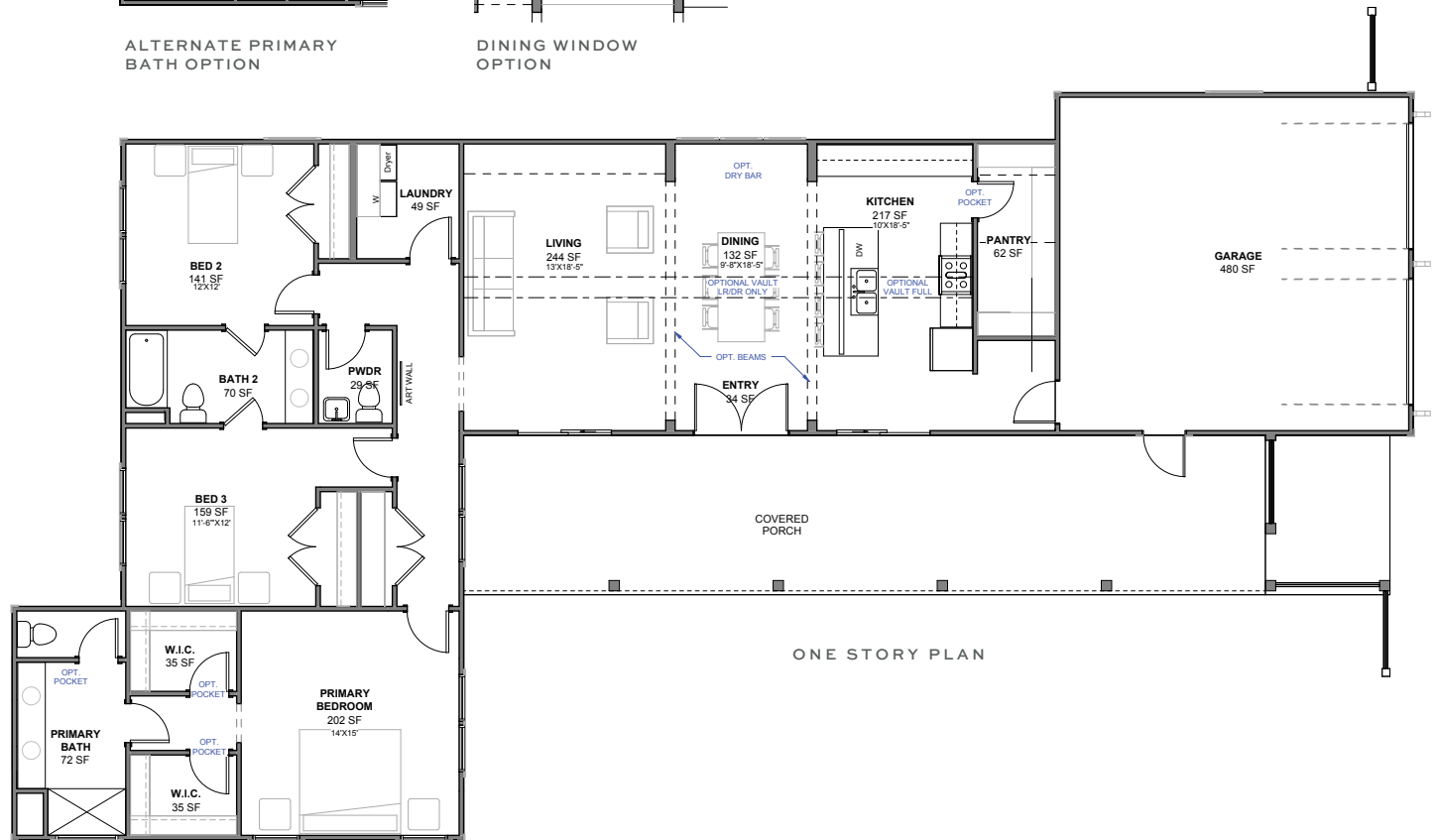
DROP ZONE OPTION



DRINK STATION OPTION



LAUNDRY SINK OPTIONS



ONE STORY PLAN



learn more at newleafsc.com/nexton

*Rendering shown for graphic purposes, actual elevations may vary. All plans, pricing, items and features subject to change without notice.