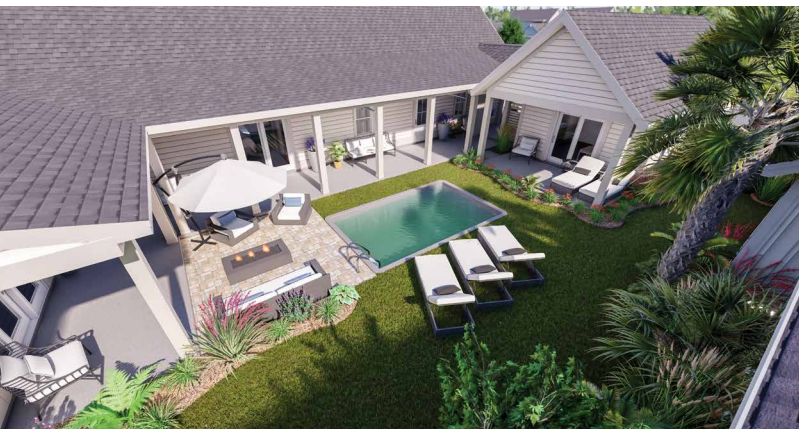


The Atria I

This 1,705 square foot home boasts two bedrooms with the master suite engaging the courtyard space, and has a second bedroom tucked quietly into the rear of the house for greater privacy. Expansive covered porches promote an easy flow for yourself and guests to embrace the Domus Collection's unique courtyard living concept.

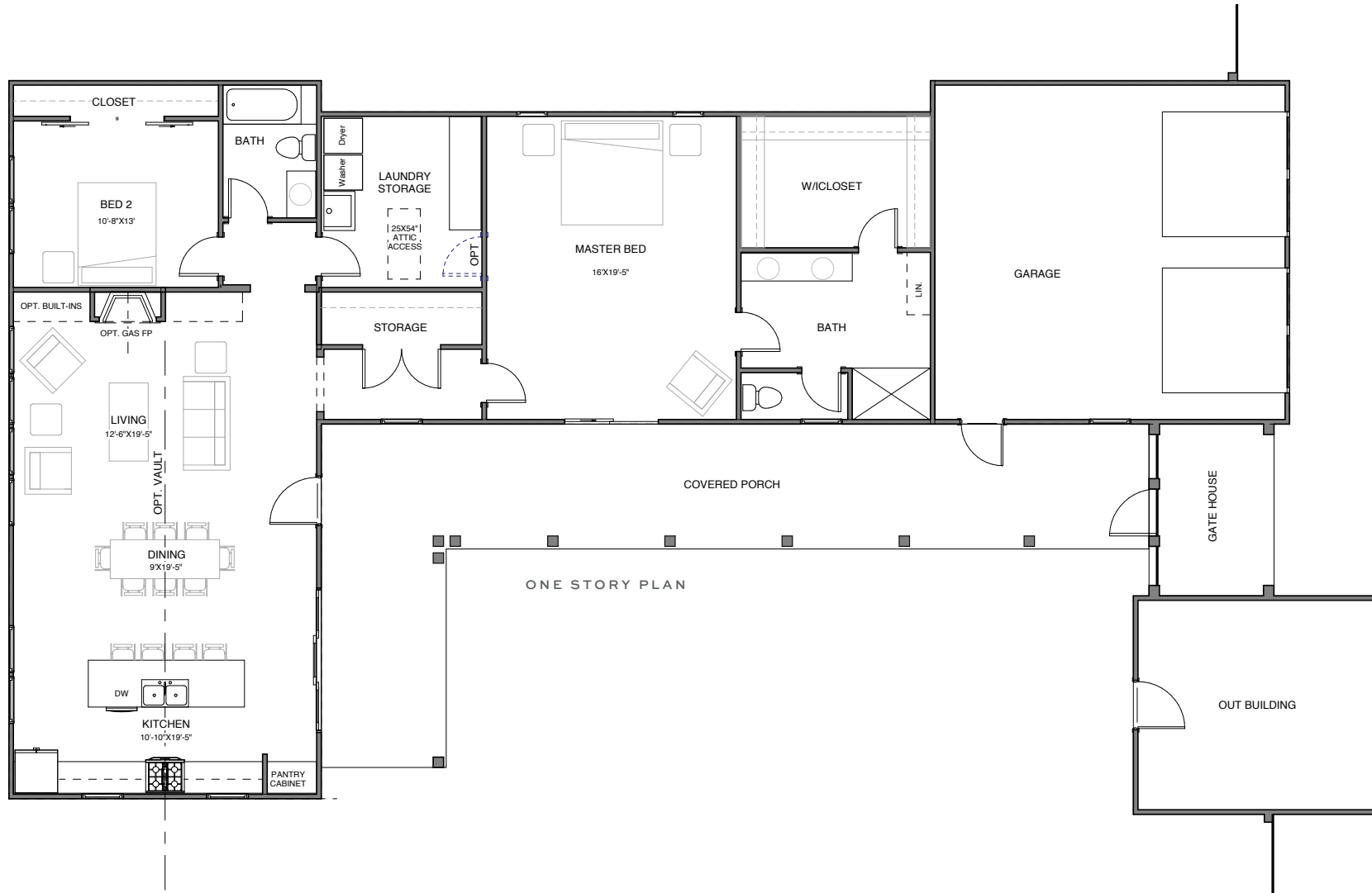
1,705	SQUARE FEET
2	BEDROOMS
2	BATHROOMS
2 Car	GARAGE
1	STORIES



The Atria I



THE FRONTALE SERIES



learn more at newleafsc.com/nexton

*Rendering shown for graphic purposes, actual elevations may vary. All plans, pricing, items and features subject to change without notice.