

# The Atria II

This 2,552 square foot home boasts three bedrooms with the primary suite engaging the courtyard space, and has a second bedroom tucked quietly into the rear of the house for greater privacy. Expansive covered porches promote an easy flow for yourself and guests to embrace the Domus Collection's unique courtyard living concept.

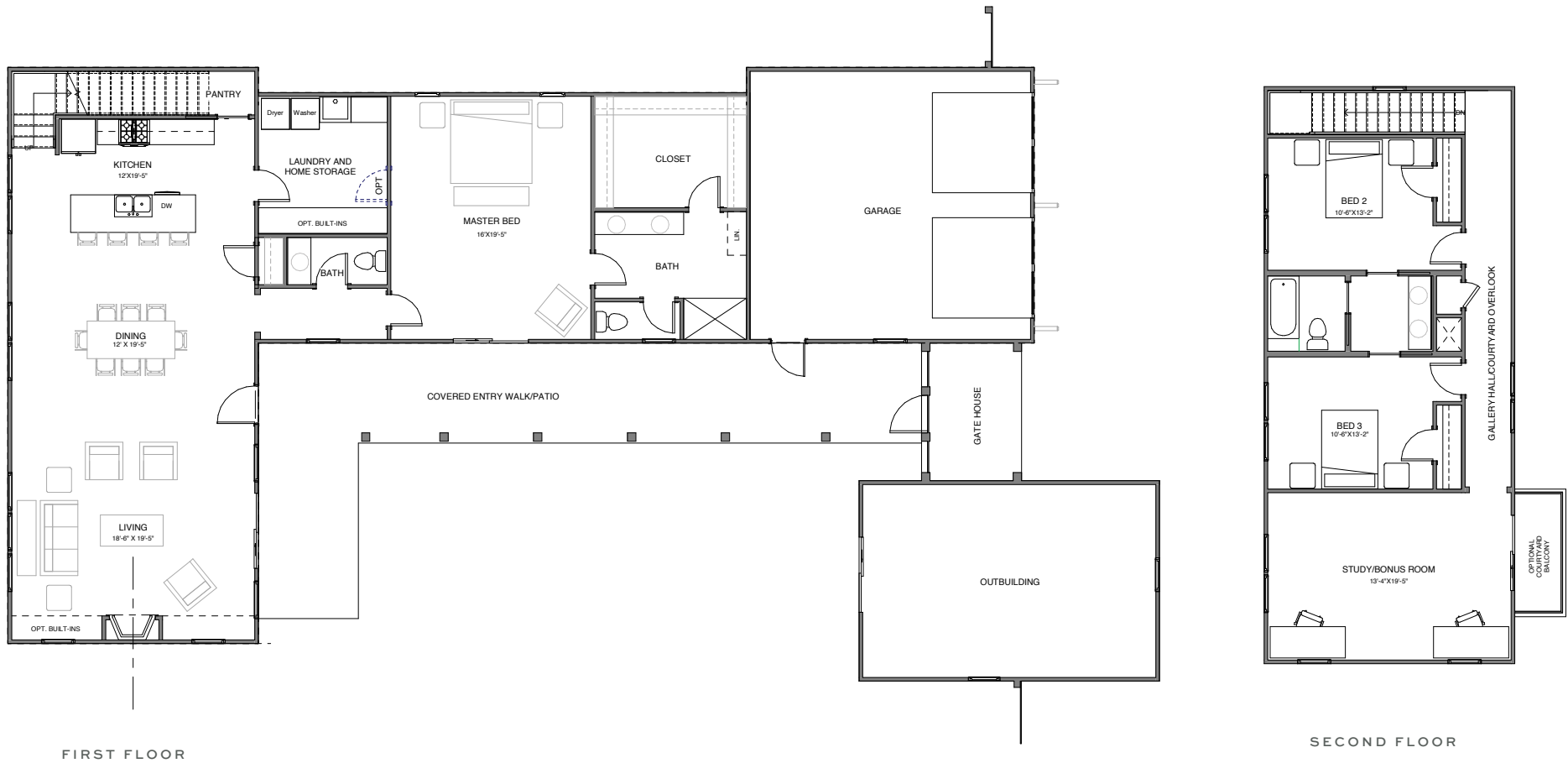
2,552	SQUARE FEET
3	BEDROOMS
2.5	BATHROOMS
2 Car	GARAGE
2	STORIES



# The Atria II



THE FRONTALE SERIES



learn more at [newleafsc.com/nexton](https://newleafsc.com/nexton)

\*Rendering shown for graphic purposes, actual elevations may vary. All plans, pricing, items and features subject to change without notice.