



NEW LEAF
BUILDERS



RIVERLIGHTS®

The Martin

The Martin offers an enticing array of innovative spaces expertly designed around a covered central courtyard, accessible from your main living areas. Our unique courtyard encourages owners to create an outdoor living or dining room as an additional space to relax and renew. The Martin's courtyard truly extends your living space and your possibilities. Coming home to the Martin is a joy. Just drop your groceries, mail, and packages at the mud room thoughtfully located just inside your entry. A generously proportioned open kitchen encourages engagement with friends and family from both the living and dining rooms and guests will appreciate the graciousness of a full guest bathroom. As an owner, you'll relish the ample storage of dual closets at the primary bedroom, situated at the rear of your home for the ultimate in privacy and convenience.

THE PIEDMONT COLLECTION

1,852	SQUARE FEET
3	BEDROOMS
2	BATHROOMS
2 Car	GARAGE
1	STORIES



ELEVATION A



ELEVATION B



ELEVATION C

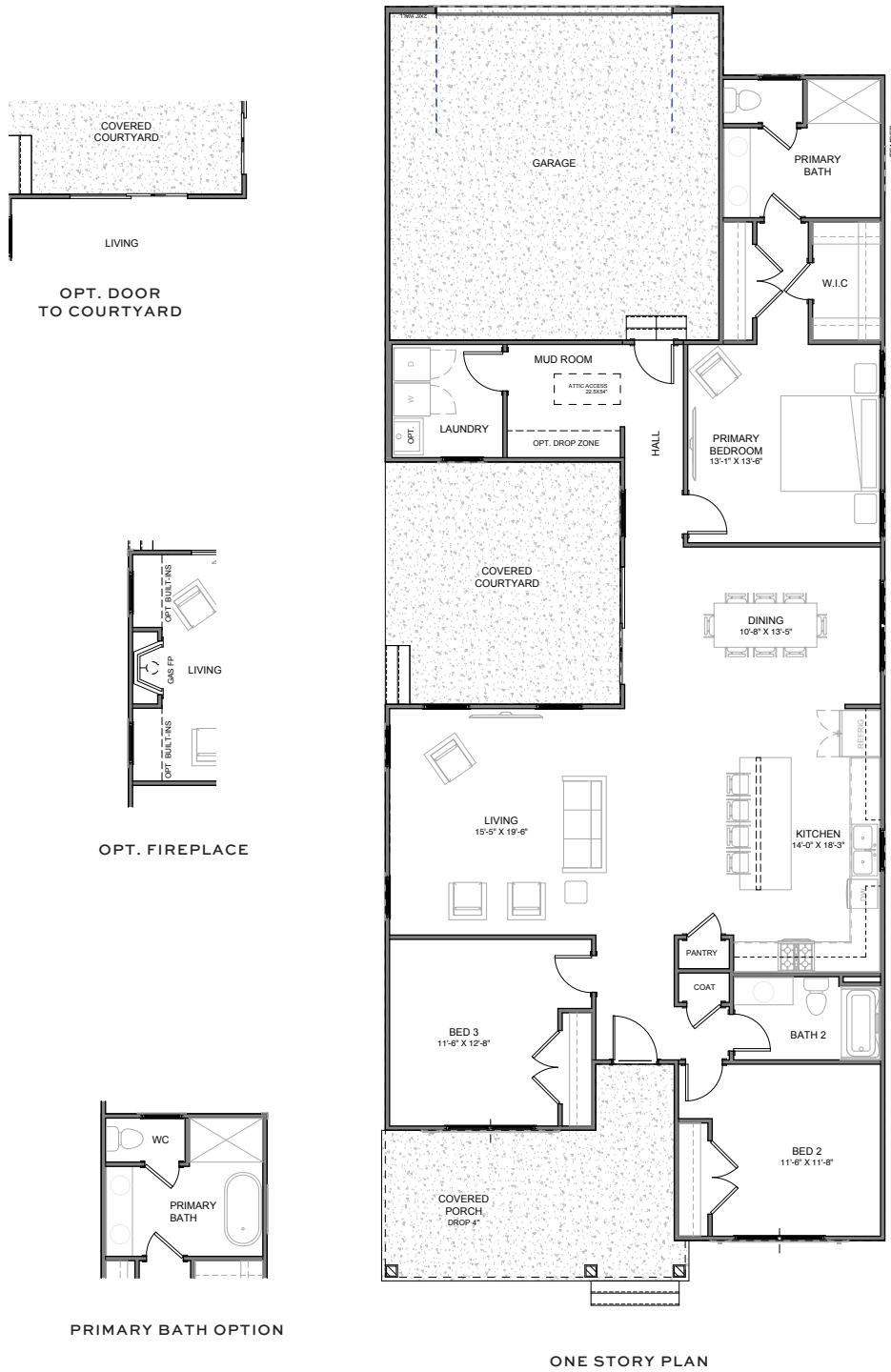
Schedule your appointment today

Contact Tyler Henrikson
843.568.4761 | tyler@newleafsc.com

Learn more at
newleafsc.com/riverlights

Rendering shown for graphic purposes, actual elevations may vary. All plans, pricing, items and features subject to change without notice.





Schedule your appointment today

Contact Tyler Henrikson
843.568.4761 | tyler@newleafsc.com

Learn more at
newleafsc.com/riverlights

