



NEW LEAF
BUILDERS



RIVERLIGHTS®

The Madison

As you enter the Madison, you're greeted by a spacious living area that seamlessly flows into a dining space and an open kitchen. Large windows flood the area with natural light, making it bright and airy. The kitchen is equipped with modern appliances, ample counter space, and a large island for cooking and casual dining. At the back is an attached 2-car garage with extra storage. Ascending the staircase, you reach a versatile loft area for a family room, home office, or play area. The second level has two bedrooms with closets and large windows. A shared full bathroom with modern fixtures serves these bedrooms. The primary bedroom suite is tucked away for privacy, featuring large windows and an en-suite bathroom with a double vanity, separate tiled walk-in shower, and walk-in closet.

THE PIEDMONT COLLECTION

2,102	SQUARE FEET
3	BEDROOMS
2.5	BATHROOMS
2 Car	GARAGE
2	STORIES



ELEVATION A

Schedule your appointment today

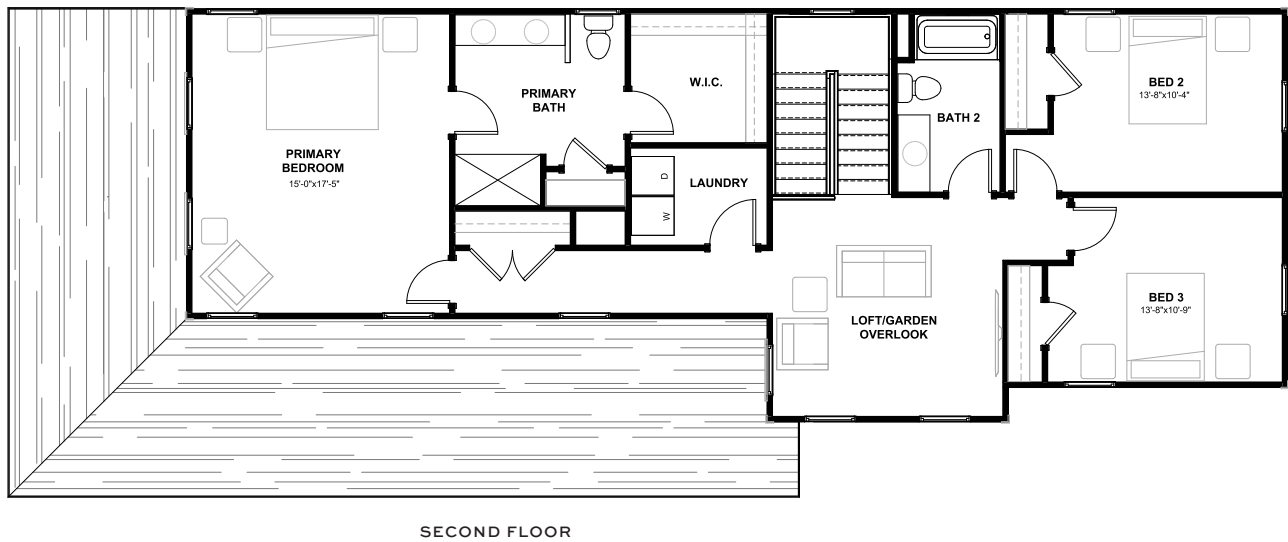
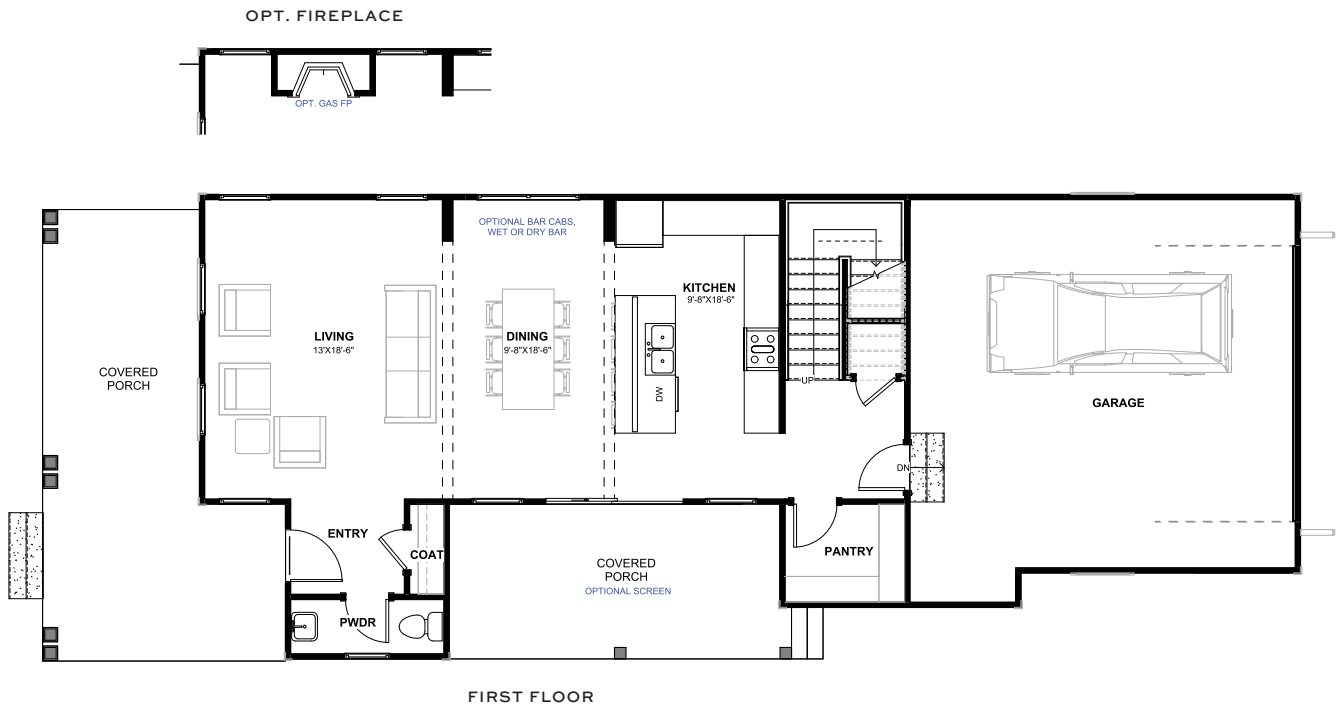
Contact Tyler Henrikson
843.568.4761 | tyler@newleafsc.com

Learn more at

newleafsc.com/riverlights

Rendering shown for graphic purposes, actual elevations may vary. All plans, pricing, items and features subject to change without notice.





Schedule your appointment today

Contact Tyler Henrikson
843.568.4761 | tyler@newleafsc.com

Learn more at
newleafsc.com/riverlights

