



**NEW LEAF**  
BUILDERS



**RIVERLIGHTS®**

# The Clay

Our single-story Clay entices homeowners with generously proportioned spaces in 1,603 thoughtfully crafted square feet. This 3 bedroom, 2 full bath design surprises with a spacious open floorplan. Coming home to the Clay is a joy. A generously proportioned open kitchen encourages engagement with friends and family from both the living and dining rooms and guests will appreciate the graciousness of the large guest bedrooms and a full guest bathroom. As the owner, you'll relish the ample storage of a walk-in closet at the primary bedroom, situated at the rear of your home for the ultimate in privacy and convenience.

## THE PIEDMONT COLLECTION

1,603	SQUARE FEET
3	BEDROOMS
2	BATHROOMS
2 Car	GARAGE
1	STORIES



ELEVATION A

**Schedule your appointment today**

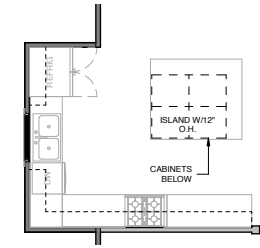
Contact Tyler Henrikson  
843.568.4761 | tyler@newleafsc.com

**Learn more at**

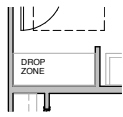
[newleafsc.com/riverlights](http://newleafsc.com/riverlights)

Rendering shown for graphic purposes, actual elevations may vary. All plans, pricing, items and features subject to change without notice.





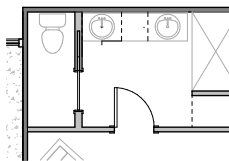
OPT. KITCHEN ISLAND



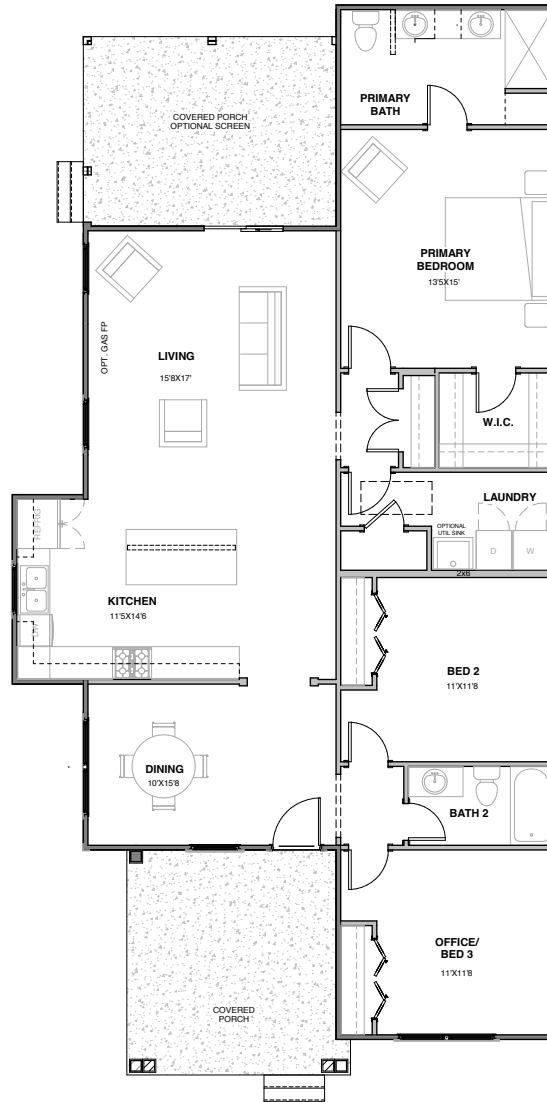
OPT. DROP ZONE



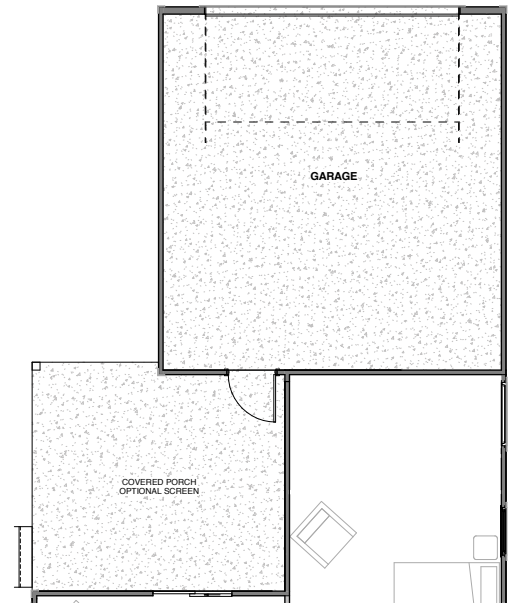
OPT. FIREPLACE



OPT. POCKET DOOR  
IN PRIMARY BATH



ONE STORY PLAN



OPT. ATTACHED GARAGE

**Schedule your appointment today**

Contact Tyler Henrikson  
843.568.4761 | tyler@newleafsc.com

Learn more at  
[newleafsc.com/riverlights](http://newleafsc.com/riverlights)

