



NEW LEAF
BUILDERS

HAYES  PARK

The Petit Syrah

The Atrium Villas are a series of attached Single-Family homes of Hayes Park, complete with entries from a common square and private courtyards. The surrounding natural environment has been preserved to give the residential community a mature feeling.

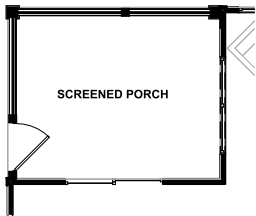
ATRIUM VILLAS

1,870	SQUARE FEET
2	BEDROOMS
2.5	BATHROOMS
2 Car	GARAGE

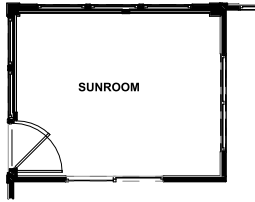


newleafsc.com/hayespark

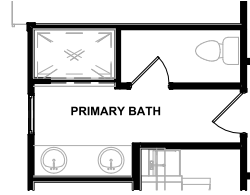
Rendering shown for graphic purposes, actual elevations may vary.
Plans and pricing subject to change without notice.



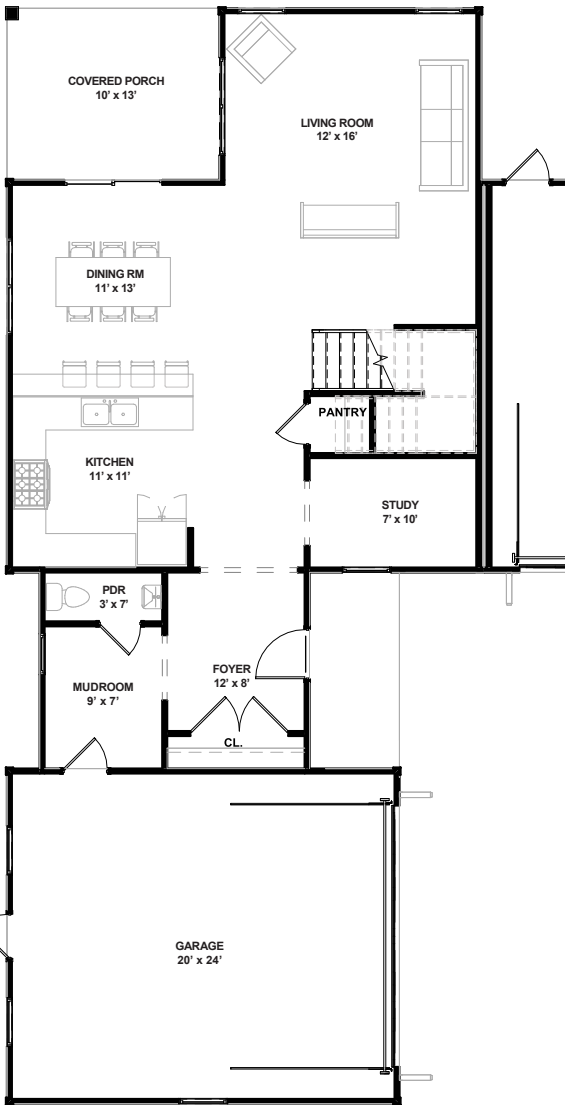
OPT. SCREEN PORCH
#00370



OPT. SUNROOM
#01042



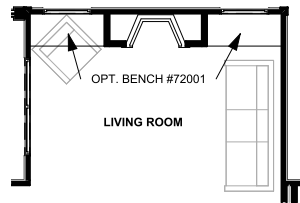
OPT. PRIMARY BATH
#00806



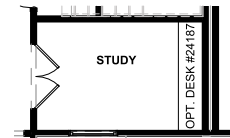
FIRST FLOOR



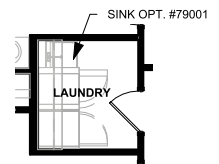
SECOND FLOOR



OPT. FIREPLACE
#45010-45055



OPT. STUDY DOORS
#72065 / 72070



OPT. LAUNDRY
#79000

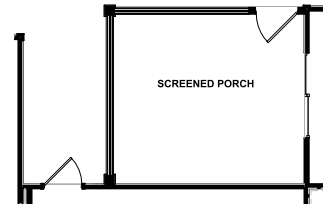
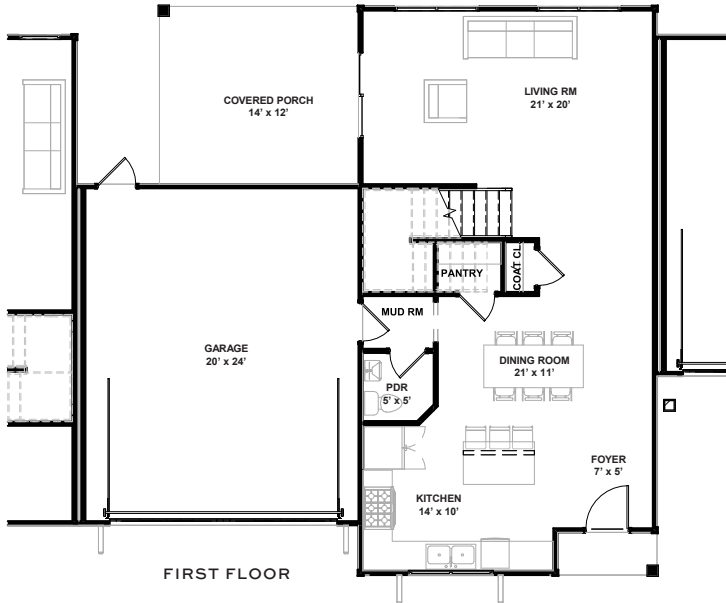
The Malbec

The Atrium Villas are a series of attached Single-Family homes of Hayes Park, complete with entries from a common square and private courtyards. The surrounding natural environment has been preserved to give the residential community a mature feeling.

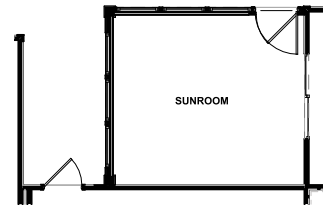
PLAZA SQUARE

1,995	SQUARE FEET
3	BEDROOMS
2.5 - 3.5	BATHROOMS
2 Car	GARAGE

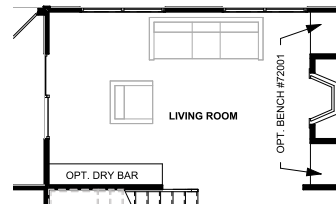
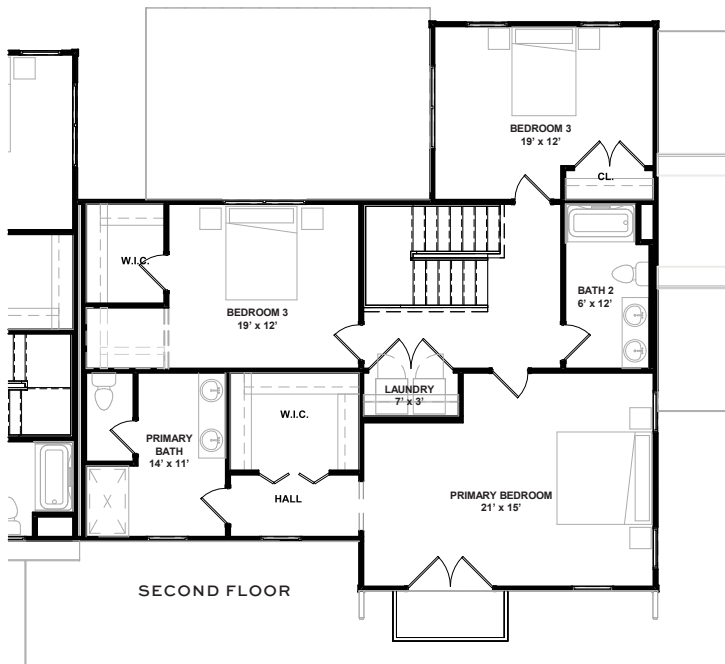




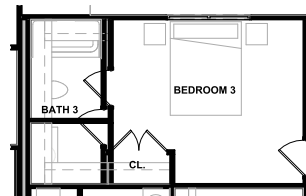
OPT. SCREEN PORCH
#00370



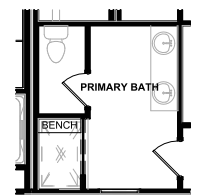
OPT. SUNROOM
#01042



OPT. FIREPLACE
#45010-45055



OPT. BATH 3
#00832



OPT. PRIMARY BATH
#00806



NEW LEAF
BUILDERS

HAYES  PARK

The Chardonnay

The Atrium Villas are a series of attached Single-Family homes of Hayes Park, complete with entries from a common square and private courtyards. The surrounding natural environment has been preserved to give the residential community a mature feeling.

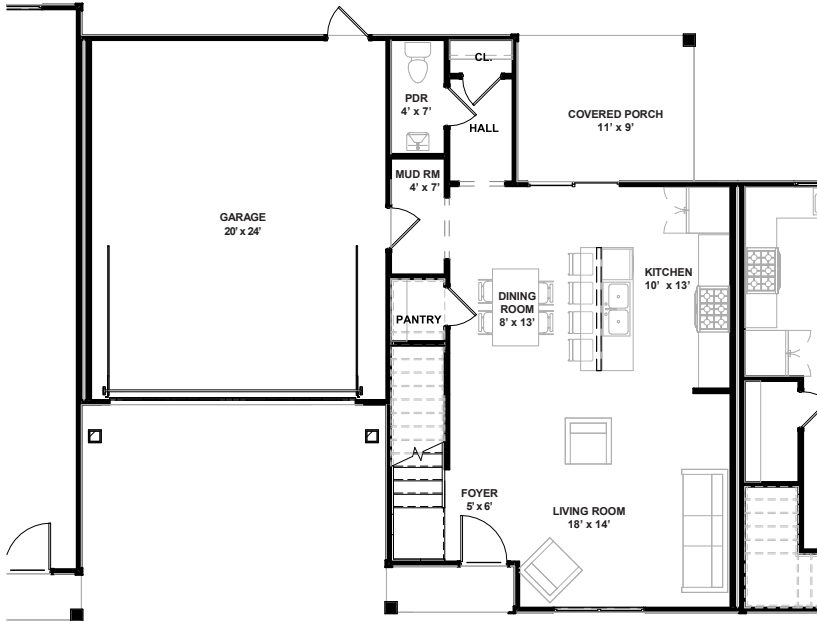
PLAZA SQUARE

1,378	SQUARE FEET
2	BEDROOMS
2.5	BATHROOMS
2 Car	GARAGE

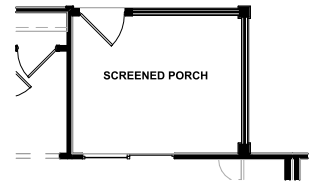


newleafsc.com/hayespark

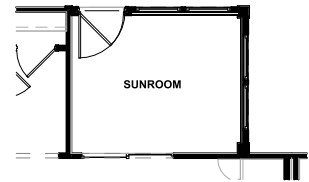
Rendering shown for graphic purposes, actual elevations may vary.
Plans and pricing subject to change without notice.



FIRST FLOOR



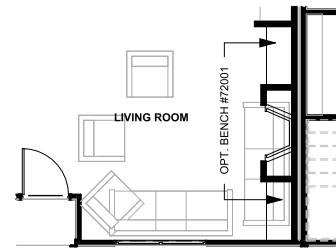
OPT. SCREEN PORCH
#00370



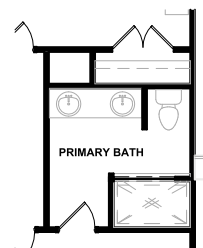
OPT. SUNROOM
#01042



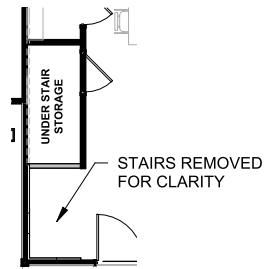
SECOND FLOOR



OPT. FIREPLACE
#45010-45055



OPT. PRIMARY BATH
#00806



OPT. STAIR STORAGE
#00814

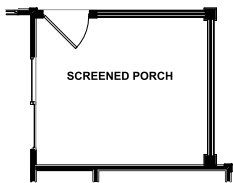
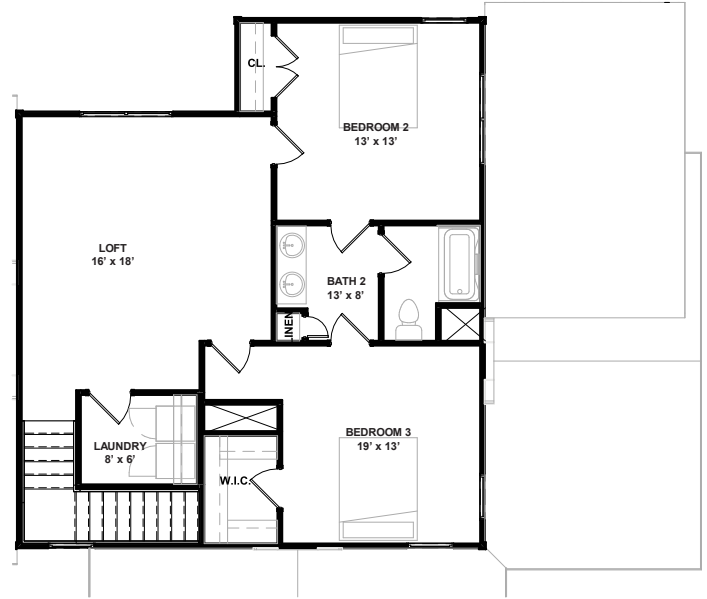
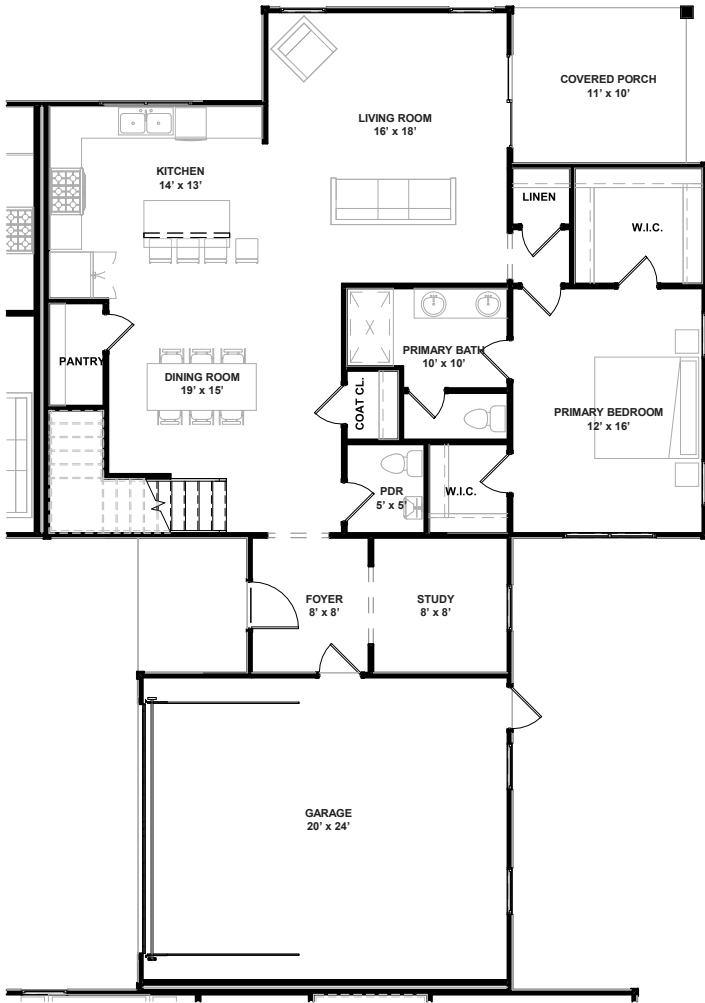
The Prosecco

The Atrium Villas are a series of attached Single-Family homes of Hayes Park, complete with entries from a common square and private courtyards. The surrounding natural environment has been preserved to give the residential community a mature feeling.

PLAZA SQUARE

2,269	SQUARE FEET
3	BEDROOMS
2.5	BATHROOMS
2 Car	GARAGE

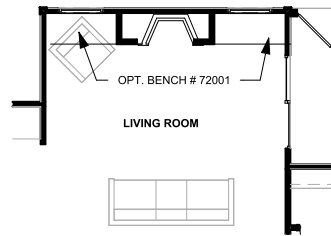




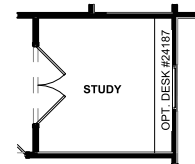
OPT. SCREEN PORCH
#00370



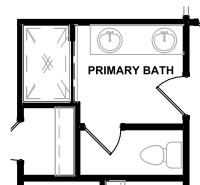
OPT. SUNROOM
#01042



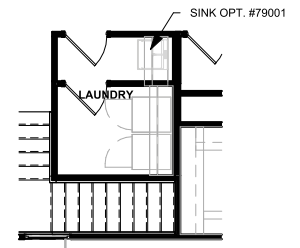
OPT. FIREPLACE
#45010-45055



OPT. STUDY DOORS
#72065 / 72070



OPT. PRIMARY BATH
#00806



OPT. LAUNDRY
#79000

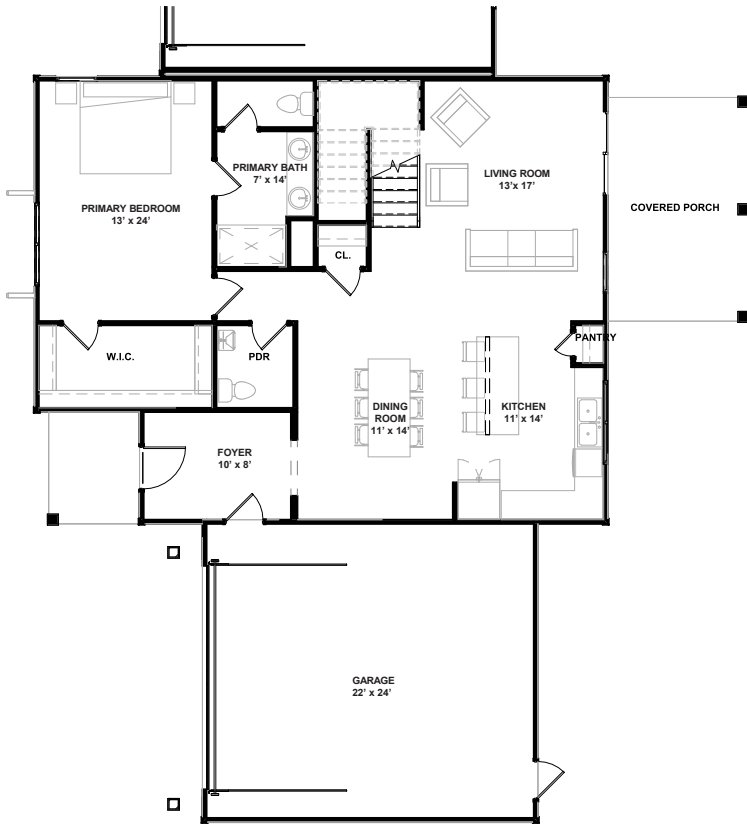
The Beaujolais

The Atrium Villas are a series of attached Single-Family homes of Hayes Park, complete with entries from a common square and private courtyards. The surrounding natural environment has been preserved to give the residential community a mature feeling.

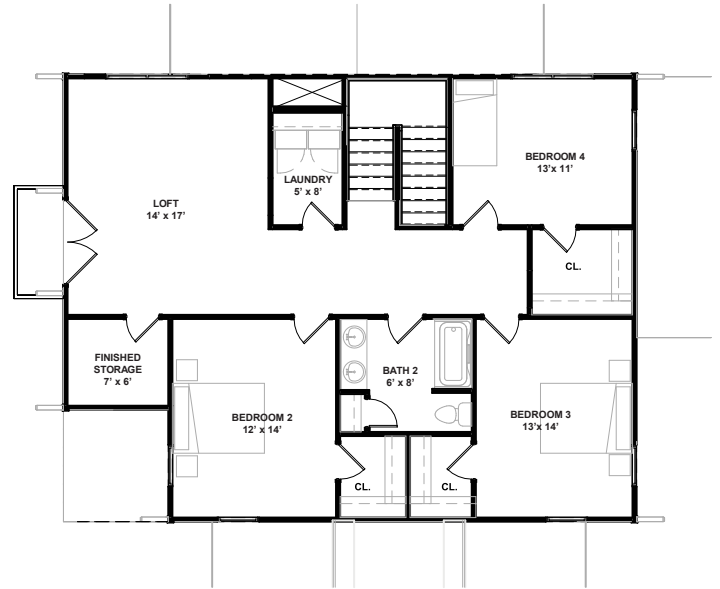
PLAZA SQUARE

2,431	SQUARE FEET
4 - 5	BEDROOMS
2.5	BATHROOMS
2 Car	GARAGE

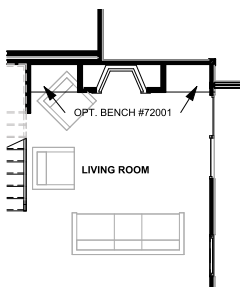




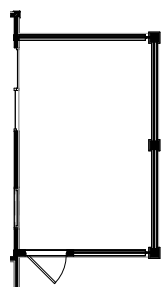
FIRST FLOOR



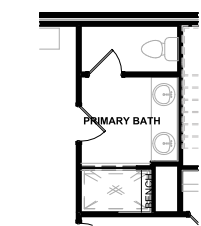
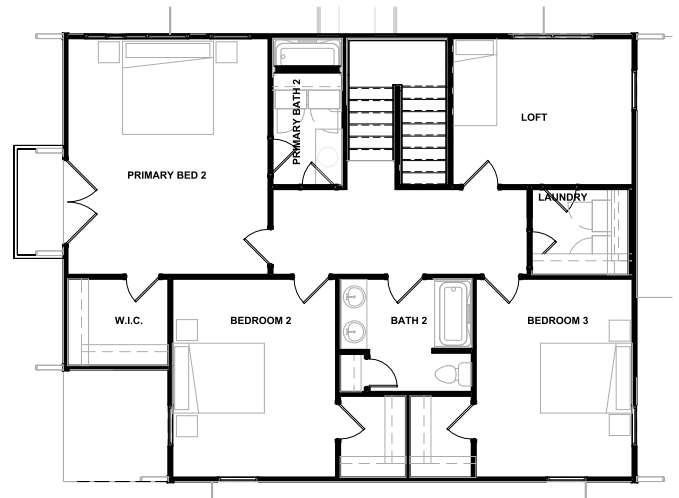
SECOND FLOOR



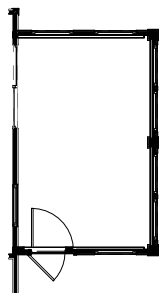
OPT. FIREPLACE
#45010-45055



OPT. SCREEN PORCH
#00370



OPT. PRIMARY BATH
#00806



OPT. SUNROOM
#01042



BEDROOM 5
(ALT SECOND FLOOR)
#00331