

DISCOVER YOUR *Unique* STYLE



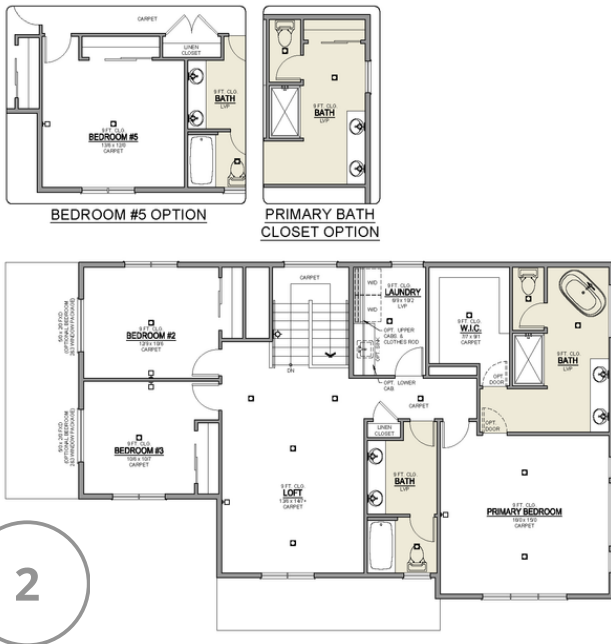
Plans Designed with **You** in Mind



MonteVista Homes
Built with You in Mind

STEP 1: Choose Your Community

Explore our vibrant communities, each offering a unique blend of style, comfort, and convenience. Whether it's a corner homesite near the park or a community with proximity to top-rated schools, our diverse homesites cater to your individual needs. With our easy personalization process, you can embark on the exciting and rewarding homebuying adventure.



STEP 2: Select Your Floor Plan

Unlock the door to ideal living with our collection of versatile floor plans. Our award-winning plans are designed with you in mind and elegantly refined to bring the best NorthWest living has to offer. From spacious single-level layouts to versatile spaces perfect for a home office or cozy den, your dream home begins to take shape with every selection. Our Premier and Distinct series homes give you the option to select the look and feel that suit you best.

STEP 3: Personalize Your Finishes:

Infuse your unique style into every corner of your new home. Step into our stress-free Personalized Choices Meeting, where selecting the perfect palette becomes a delightful experience. Elevate your space with luxurious amenities handpicked to elevate your everyday living experience. From deluxe fixtures to designer finishes, every detail reflects your personality and vision, ensuring your home is a true reflection of you.



Distinct **SERIES HOMES**

Elevate Your Living Experience

Elegant Design Meets Functional Living

Featuring 9ft ceilings, with vaults and coffers, and expansive 8ft doors, these homes possess an unparalleled sense of space. Enlarged windows offer not only a visually stunning experience, as they allow the natural light to brighten each room, but also contribute to energy efficiency by reducing the need for artificial lighting during the day.

Discover Architectural Excellence

Discover your style with our range of Distinct series home elevations. The Craftsman elevation exudes artisanship and intricate detailing that adds character to your home. The sleek and sophisticated Modern elevation features clean lines and open spaces to create a stylish and minimalist atmosphere. The Farmhouse elevation combines rustic charm with modern amenities for a cozy yet refined living space.



Other Features Include:

- Designer Kitchen Island Ranges
- Luxurious Soaker Tubs*
- Premium Kitchen Cabinets
- Full-Height Backsplash
- Tile Shower in Primary
- Smart Home Ready
- 8ft Garage Door
- Elegant Exterior Stone Accents

*Some features are plan-specific and may vary depending on selections.

Premier **SERIES HOMES**

Where Luxury Meets Lifestyle

Expertly Crafted to Suit Your Style

Immerse yourself in spacious, open floor plans complemented by the flexibility of semi-custom options, allowing you to tailor your home to perfectly suit your needs. Unleash your creativity with your choice of designer interior and exterior color packages and explore a variety of layout options, seamlessly blending style and functionality to create a space that's uniquely yours.

Opt for Exceptional Design

The choice is yours with our three Premier series home elevations. The Craftsman elevation highlights intricate detailing, adding a unique character to your home. The Traditional elevation, a classic choice, boasts carefully crafted elements that endure the test of time. The Farmhouse elevation merges rustic charm with modern amenities, creating a cozy yet contemporary feel.



Other Features Include:

- Quartz Kitchen Countertops
- Sleek Stainless Steel Appliances
- Luxury Vinyl Plank (LVP) Flooring
- Gas Fireplace with Stone Surround
- Craftsman Exterior Lighting Package
- Open-Concept Layouts
- Flex Space for Home Office or Playroom
- Front Yard Landscaping & Irrigation

*Some features are plan-specific and may vary depending on selections.

INCLUDED HOME FEATURES	PREMIER	DISTINCT
Craftsman combination Hardie cement composite siding	✓	✓
Dual Pane, low "E", argon-filled vinyl windows & sliding glass doors	✓	✓
Architectural grade roof—25 year composite shingles	✓	✓
Two hose bibs—one front and one rear	✓	✓
Two electrical outlets—one front and one rear	✓	✓
Quick recovery gas water heater	✓	✓
Concrete driveways and porches	✓	✓
Insulated underfloor with vapor barrier	✓	✓
Raised panel insulated doors	✓	✓
Stem wall concrete foundation with crawl space	✓	✓
Pre-wired for garage door openers	✓	✓
Craftsman exterior lighting package	✓	✓
Front yard landscaping with irrigation	✓	✓
Irrigation T to tie in additional landscaping in side yard or backyard	✓	✓
Dedicated freezer outlet in garage	✓	✓
Plush carpet in great room and bedrooms with 8lb pad	✓	✓
Designer pull-out kitchen faucet	✓	✓
Stainless steel Energy Star appliance package including: gas five burner range oven	✓	✓
High efficiency insulation: R21 walls, R30 underfloor, R49 ceilings	✓	✓
Pre-wired for air conditioning unit	✓	✓
95% high-efficiency forced air gas furnace	✓	✓
Gas fireplace with stone surround and mantel	✓	✓

INCLUDED HOME FEATURES	PREMIER	DISTINCT
Plumbing for refrigerator ice maker	✓	✓
Shaker style cabinetry	✓	✓
Craftsman crown molding on upper cabinets	✓	✓
Elongated/Comfort height toilets	✓	✓
Luxury Vinyl Plank (LVP) flooring*	✓	✓
Modern elevation options		✓
Over-sized windows		✓
9' ceilings		✓
8' interior doors		✓
8' garage door		✓
36" upper kitchen cabinets		✓
Quartz kitchen counters with full-height backsplash		✓
Quartz 4" backsplash in bathrooms		✓
Quartz counters in primary & guest bath		✓
Vaulted ceiling in great room*		✓
Coffered ceiling in primary bedroom*		✓
Additional electrical amenities		✓
Free-standing soaking tub*		✓
Farm house style sink in kitchen		✓
Designer kitchen island range configuration		✓
Upper cabinets in laundry room		✓
Tile shower in primary bathroom		✓
Stone column(s) and/or front facing garage wing walls*		✓
Pre-wired tech package—includes box for future smart panel		✓







With our 250+ point quality check, no matter which selections you choose, MonteVista Homes ensures that each home is a testament to our commitment to excellence in home construction.





MonteVista Homes

Built with You in Mind