

FOUNDERS POINTE
AT MIDTOWN

STAFFORD



3,137 SQUARE FEET

| 4-5 BEDROOMS

| 3.5 - 4 BATHROOMS



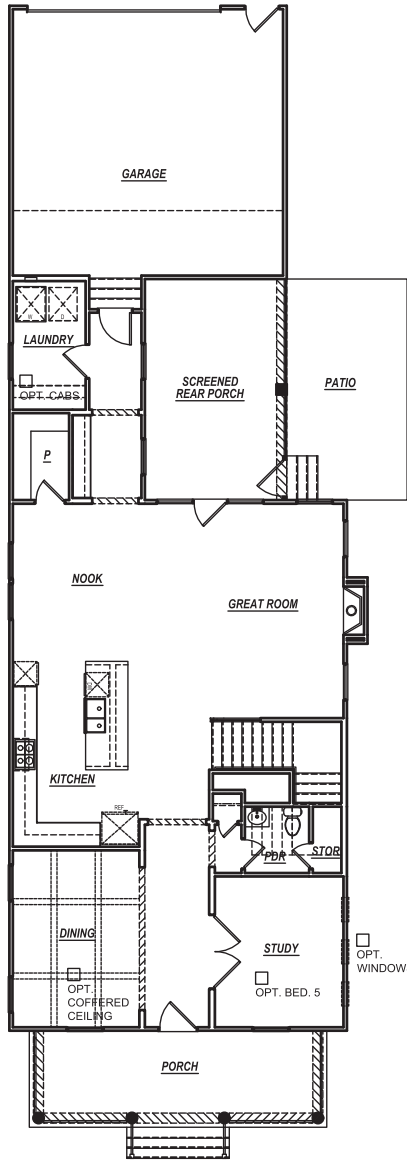
CRESCENTHOMES.NET

CHS 843.466.5000

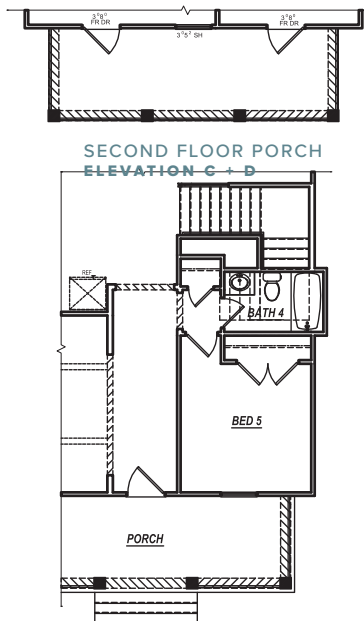
| GVL 864.406.5000

| NVL 615.392.5000

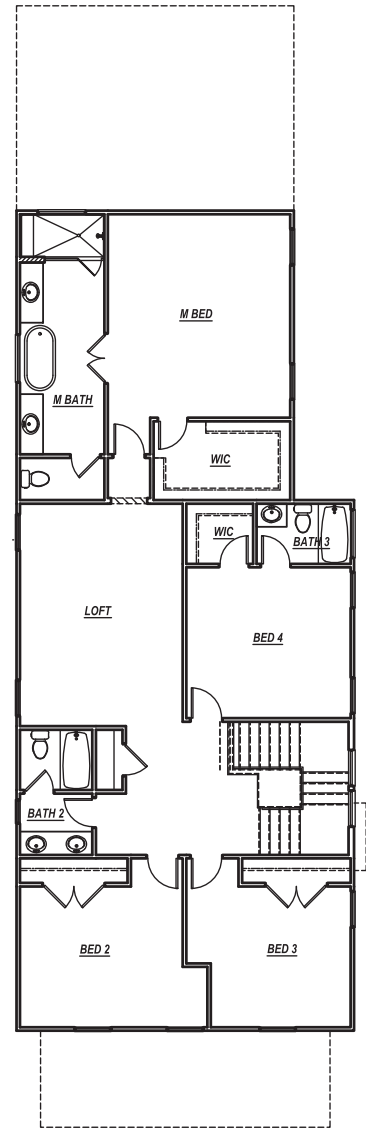
CRESCENT
HOMES



FIRST FLOOR PLAN
ELEVATION A



OPT. BED 5 / BATH 4



SECOND FLOOR PLAN
ELEVATION A

REV.
5.14.19

Dimensions and square footage are approximate. Elevations shown are artist's concepts. Optional features reflected in floor plan. Floor plans may vary per elevation. Crescent Homes reserves the right to make changes without notice or prior obligation.



CRESCENTHOMES.NET

CHS 843.466.5000 | GVL 864.406.5000 | NVL 615.392.5000

CRESCENT
HOMES