

## COTTAGE SERIES

### VIRGINIA

2433 SQ. FT.  
3-5 BEDROOMS, 2.5-3 BATHS



**A** SHOWN WITH OPTIONAL  
METAL ROOF



**B** SHOWN WITH OPTIONAL  
METAL ROOF



**C**

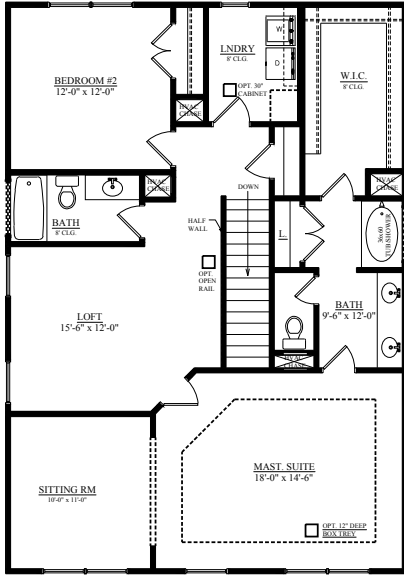


**D** SHOWN WITH OPTIONAL  
METAL ROOF

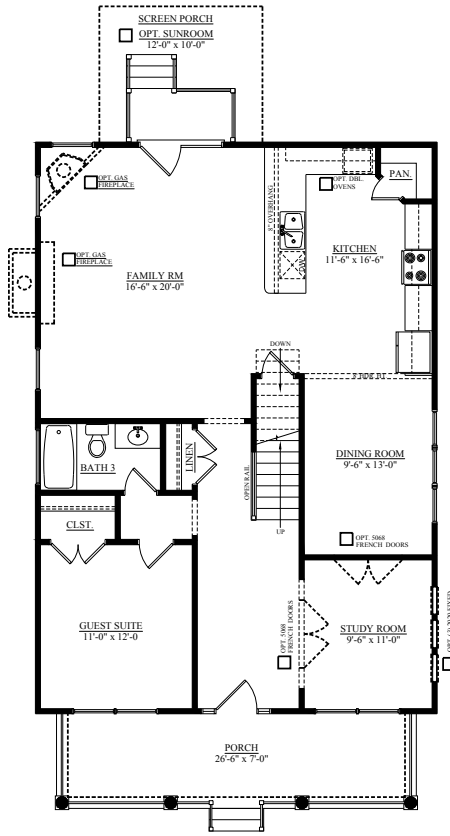


**F**

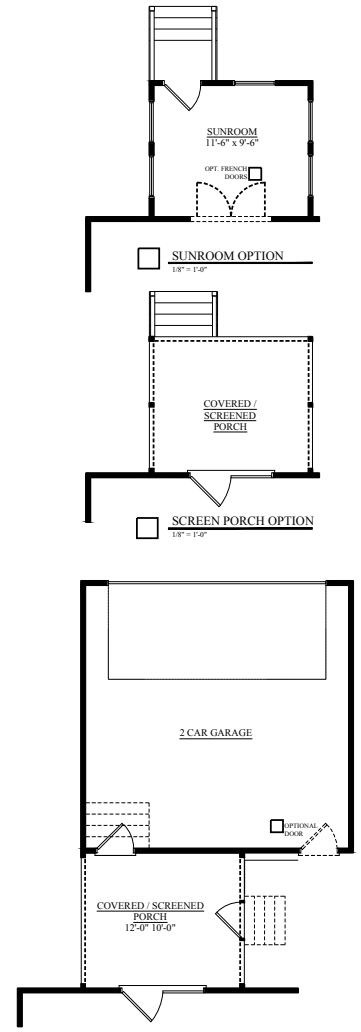
**E**



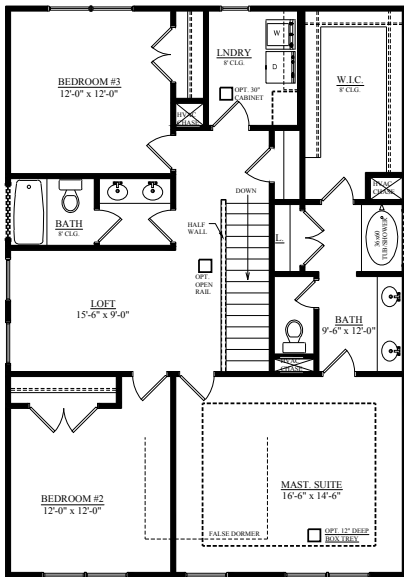
OPT. 2 BR UPPER FL. "A", "C" & "D"  
18' x 14'



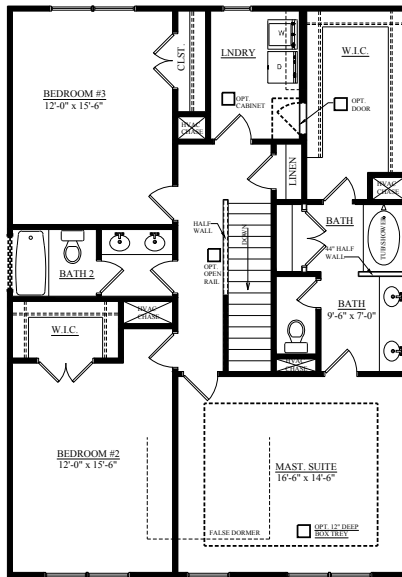
MAIN FLOOR (ALL ELEVATIONS)



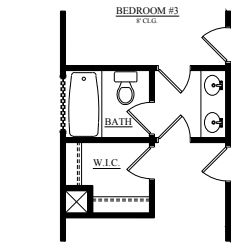
OPTIONAL ATTACHED GARAGE  
18' x 14'



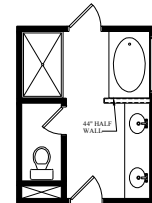
OPT. 3 BR w/ LOFT UPPER FL. "A", "C" & "D"  
18' x 14'



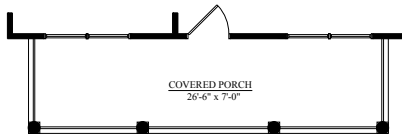
UPPER LEVEL PLAN- ELEVATION



STANDARD UPPER PLAN W/  
JACK & JILL BATH OPTION



DELUXE BATH OPTION  
18' x 14'



UPPER LEVEL PLAN- ELEVATION

**"VIRGINIA" 2,433 SQ.**

Rev. 1-31-19



DIMENSIONS AND SQUARE FOOTAGE ARE APPROXIMATE. ELEVATIONS SHOWN ARE ARTIST'S CONCEPTS. OPTIONAL FEATURES REFLECTED IN FLOOR PLAN. FLOOR PLANS MAY VARY PER ELEVATION. CRESCENT HOMES RESERVES THE RIGHT TO MAKE CHANGES WITHOUT NOTICE OR PRIOR OBLIGATION.