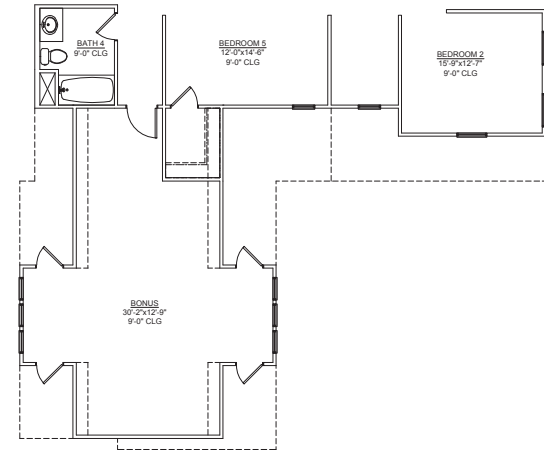


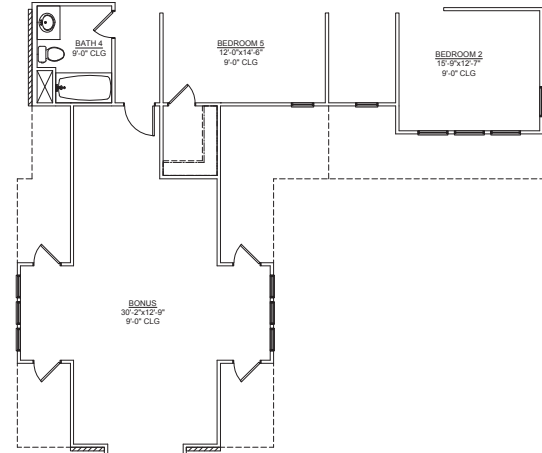
The Roderick



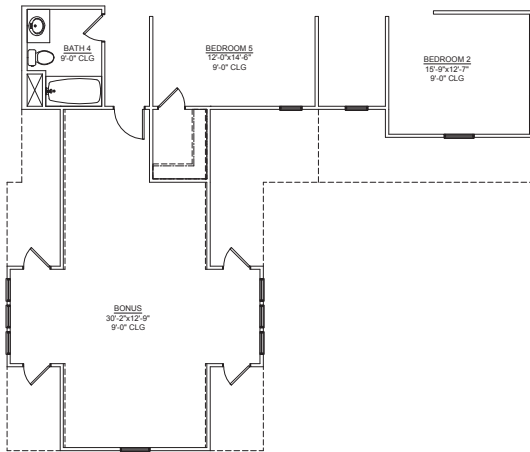
3,854 SQUARE FEET • 5 BEDROOMS + OPTIONAL BONUS ROOM • 4.5 BATHROOMS • 2 CAR GARAGE



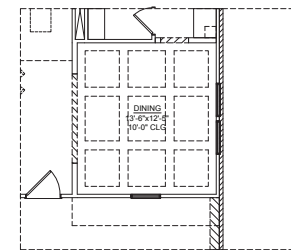
OPT. BONUS RM W/ DORMERS
ELEVATION A



OPT. BONUS RM W/ DORMERS
ELEVATION B



OPT. BONUS RM W/ DORMERS
ELEVATION C



OPT. COFFERED CEILING IN DINING



A



A

+BONUS ROOM



B



B

+BONUS ROOM



C



C

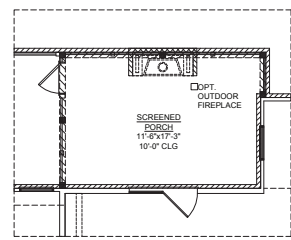
+BONUS ROOM

Dimensions and square footage are approximate. Elevations shown are artist's concepts. Optional features reflected in floor plan. Floor plans may vary per elevation. Crescent Homes reserves the right to make changes without notice or prior obligation.

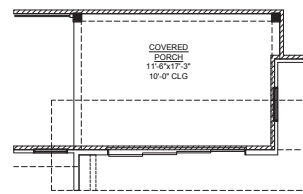
REV. 01.19.24

FIRST FLOOR

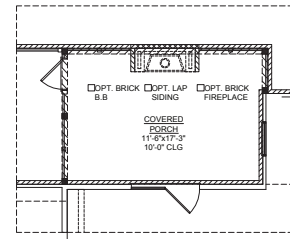
SECOND FLOOR



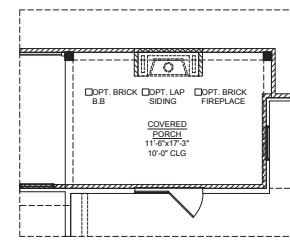
OPT. SCREENED PORCH



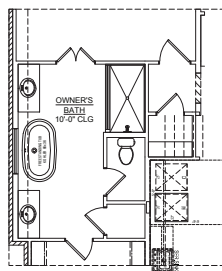
OPT. SLIDING DOOR



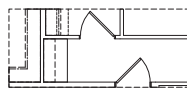
OPT. OUTDOOR FIREPLACE WITH SCREENED PORCH



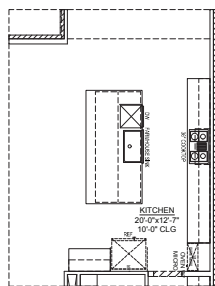
OPT. OUTDOOR FIREPLACE WITH COVERED PORCH



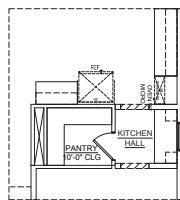
OPT. FREESTANDING TUB



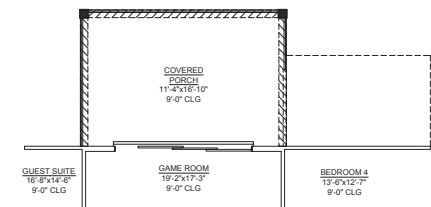
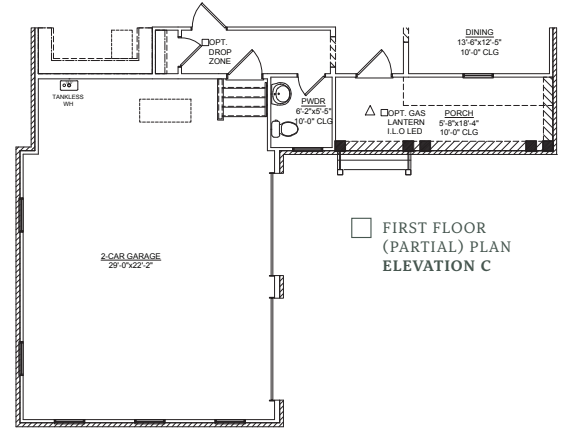
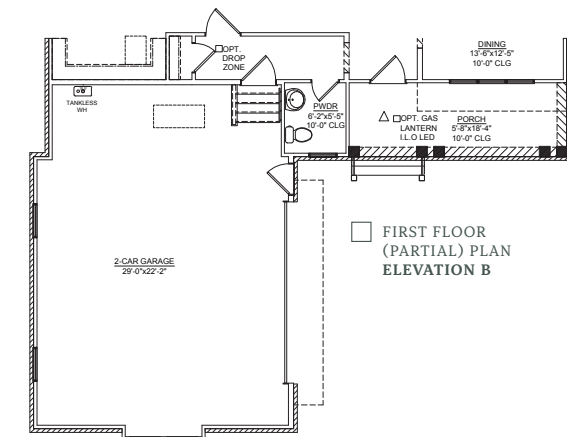
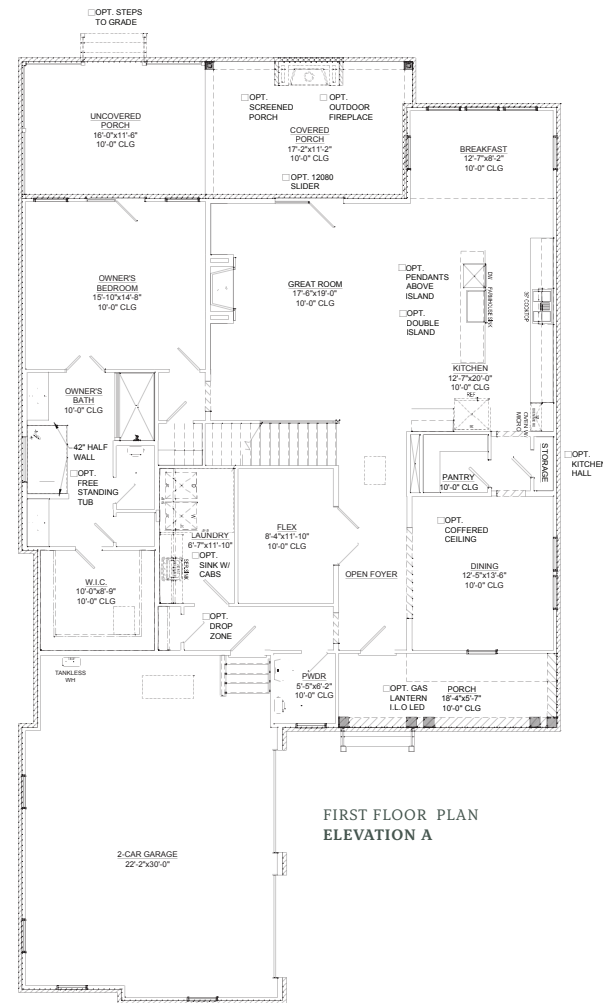
OPT. DROP ZONE



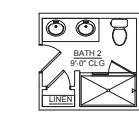
OPT. KITCHEN DOUBLE ISLAND



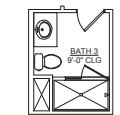
OPT. KITCHEN HALL



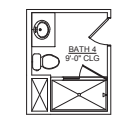
OPT. SGD AT COVERED PORCH



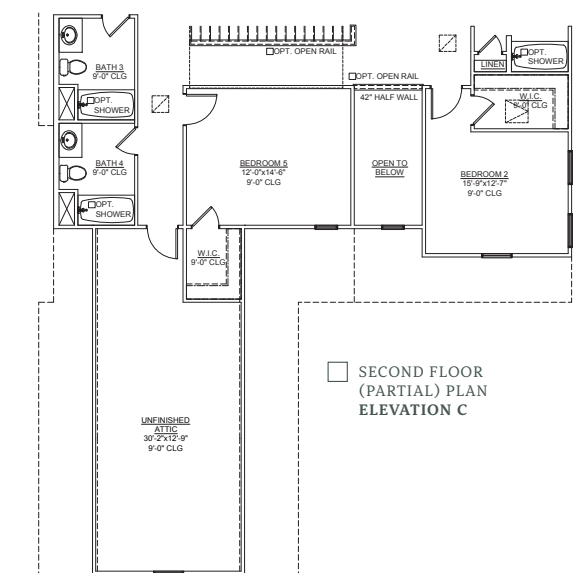
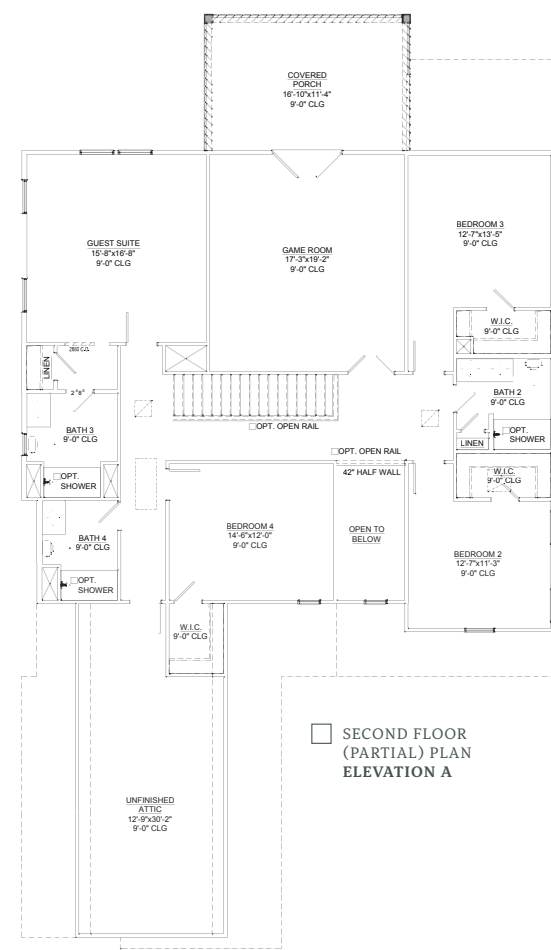
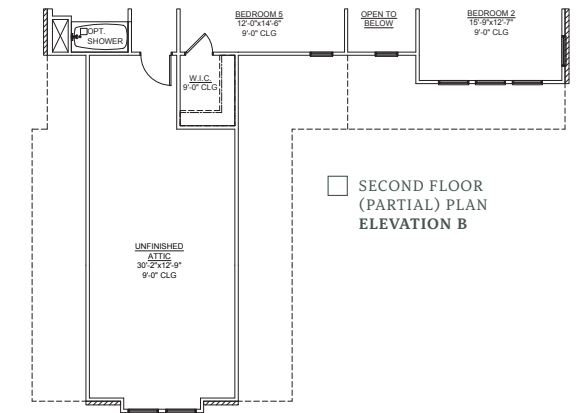
OPT. SHOWER AT BATH 2



OPT. SHOWER AT BATH 3



OPT. SHOWER AT BATH 4



Dimensions and square footage are approximate. Elevations shown are artist's concepts. Optional features reflected in floor plan. Floor plans may vary per elevation. Crescent Homes reserves the right to make changes without notice or prior obligation.

