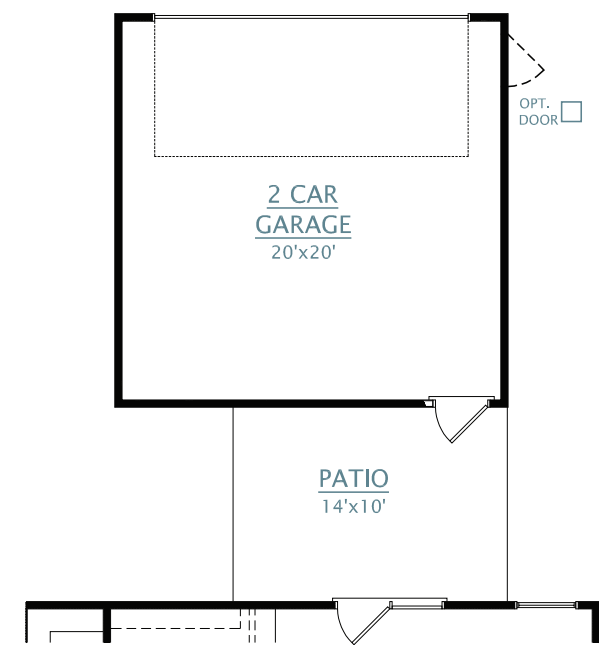
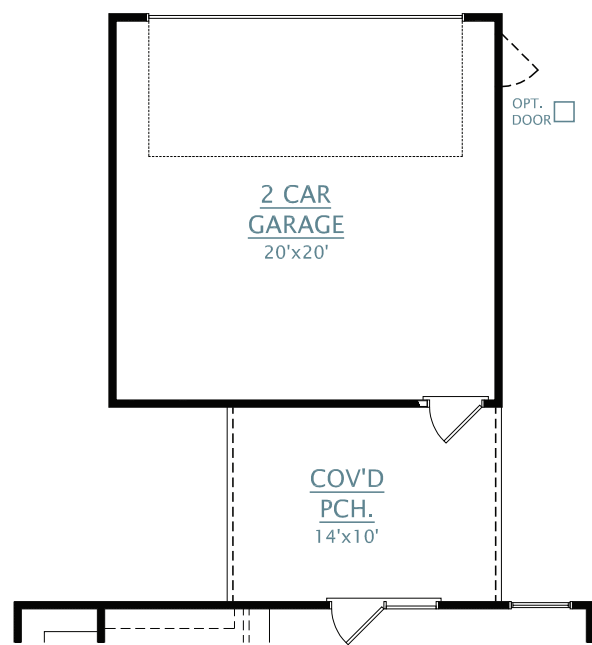


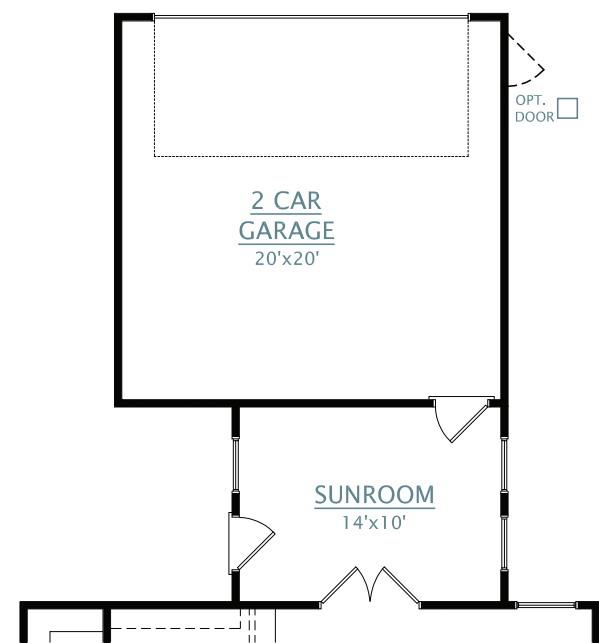
DETACHED GARAGE OPTIONS



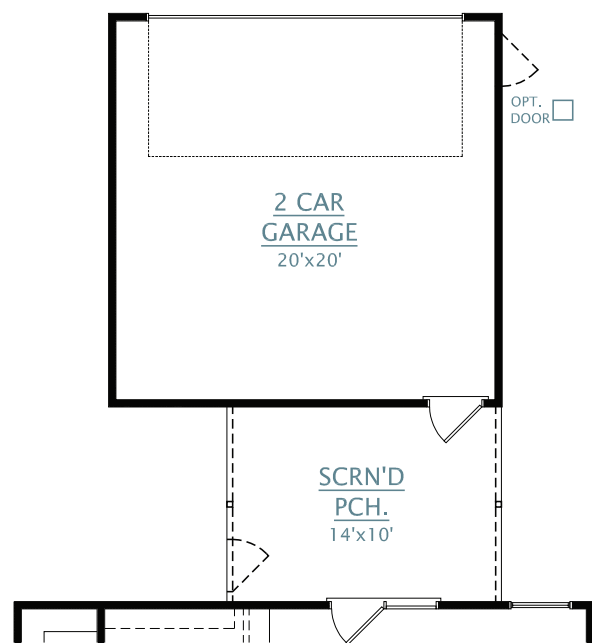
OPT. 2 CAR DETACHED GARAGE WITH PATIO



OPT. 2 CAR DETACHED GARAGE WITH COVERED PORCH



OPT. 2 CAR DETACHED GARAGE WITH SUNROOM



OPT. 2 CAR DETACHED GARAGE WITH SCREENED PORCH

REV. 1.16.24

Dimensions and square footage are approximate. Elevations shown are artist's concepts. Optional features reflected in floor plan. Floor plans may vary per elevation. Crescent Homes reserves the right to make changes without notice or prior obligation.



CRESCENTHOMES.NET

CHS 843.466.5000 | GVL 864.406.5000 | NVL 615.392.5000

CRESCENT HOMES

COTTAGE SERIES

VIRGINIA

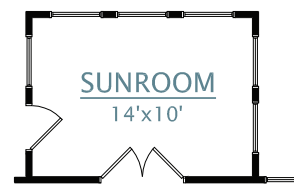
2,433-2,573 SQUARE FEET | 3-4 BEDROOMS | 3 BATHROOMS | 1-2 CAR GARAGE



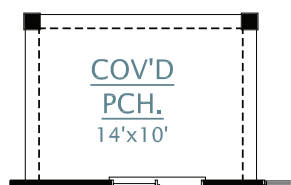
CRESCENT HOMES

FIRST FLOOR

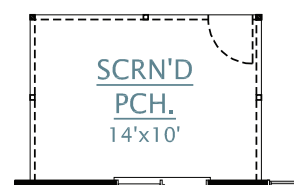
SECOND FLOOR



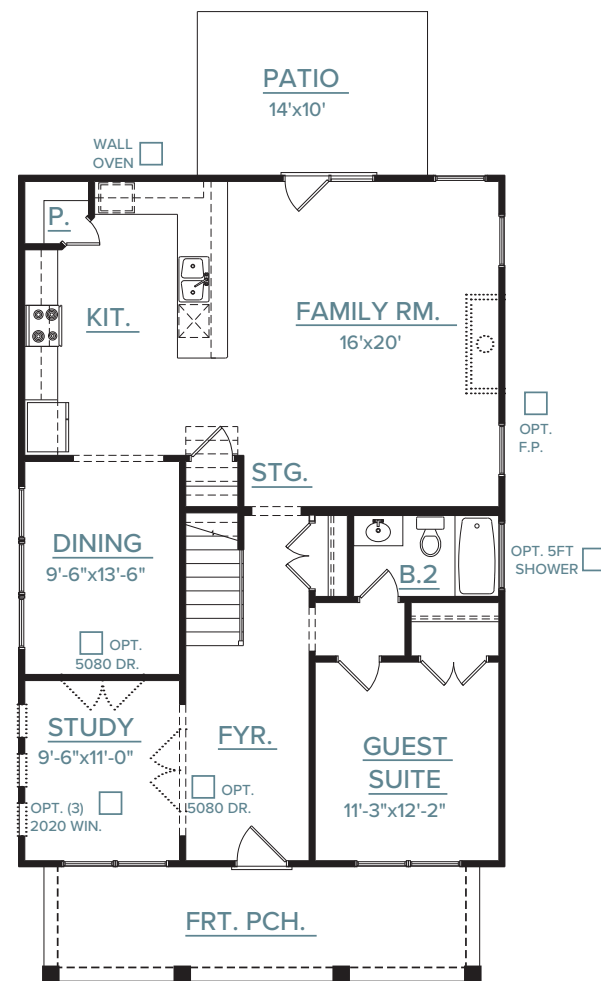
OPT. SUNROOM



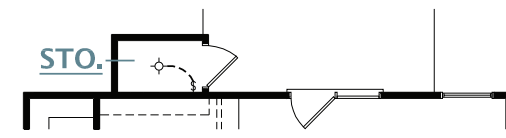
OPT. COVERED PORCH



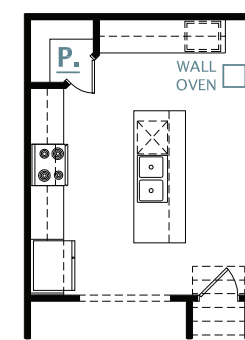
OPT. SCREENED PORCH



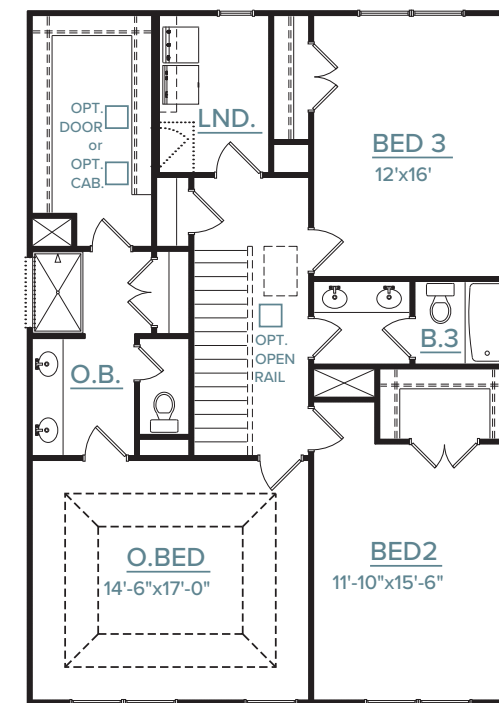
FIRST FLOOR PLAN



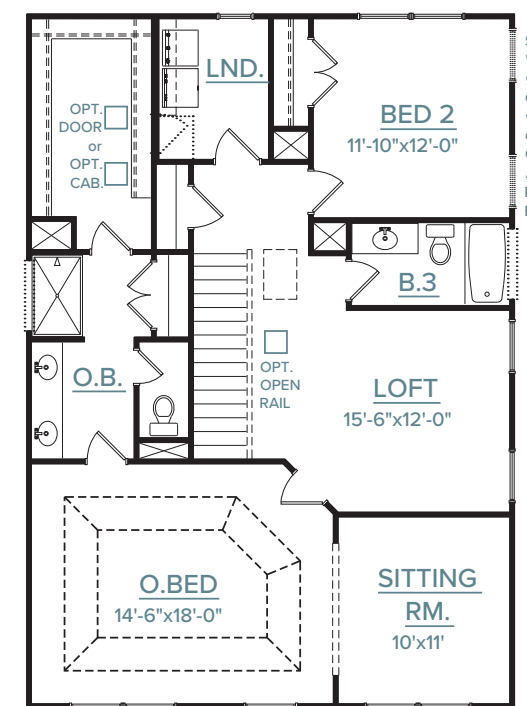
OPT. STORAGE ROOM



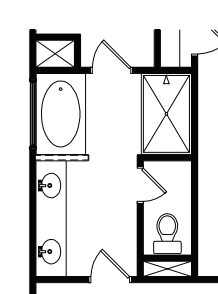
OPT. ALTERNATE KITCHEN



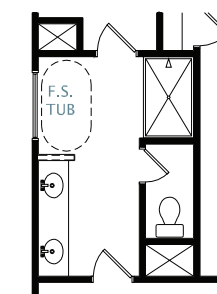
SECOND FLOOR PLAN



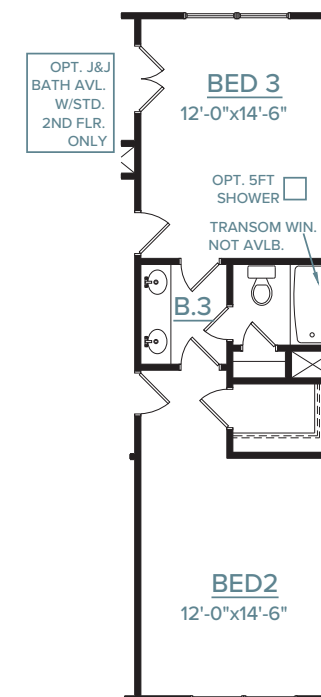
OPT. SECOND FLOOR WITH LOFT AND SITTING ROOM



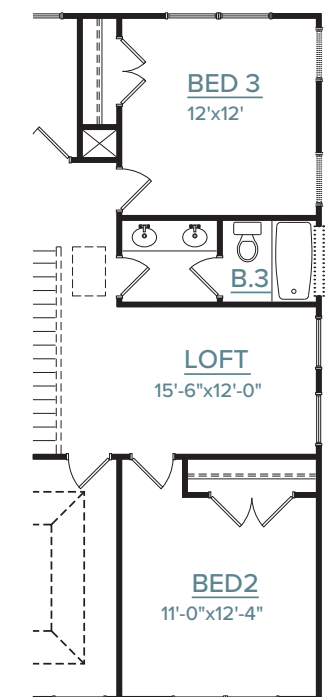
OPT. SEPARATE TUB & SHOWER



OPT. FREE STANDING TUB & SHOWER



OPT. JACK AND JILL BATH



OPT. SECOND FLOOR PLAN WITH LOFT

Dimensions and square footage are approximate. Elevations shown are artist's concepts. Optional features reflected in floor plan. Floor plans may vary per elevation. Crescent Homes reserves the right to make changes without notice or prior obligation.

