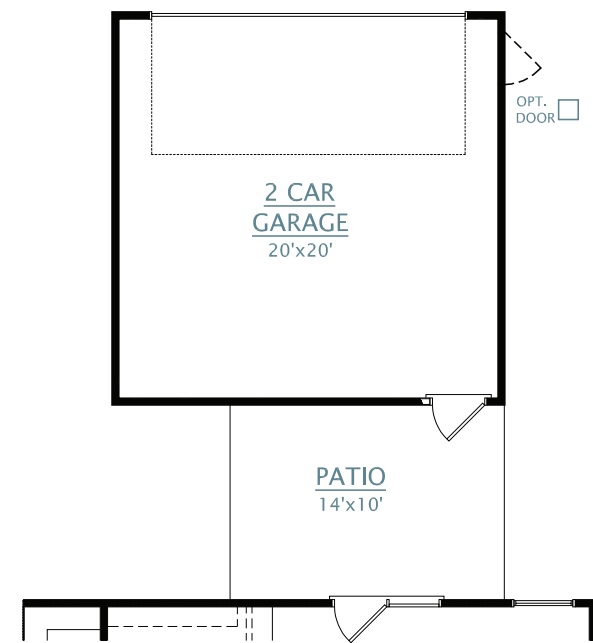
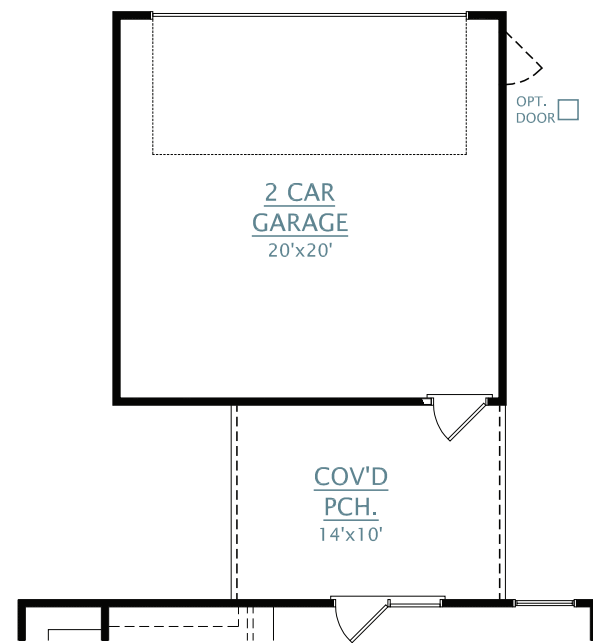


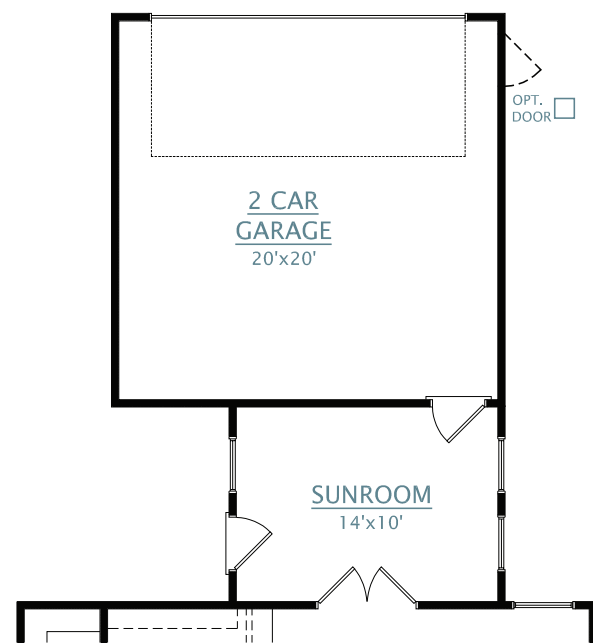
DETACHED GARAGE OPTIONS



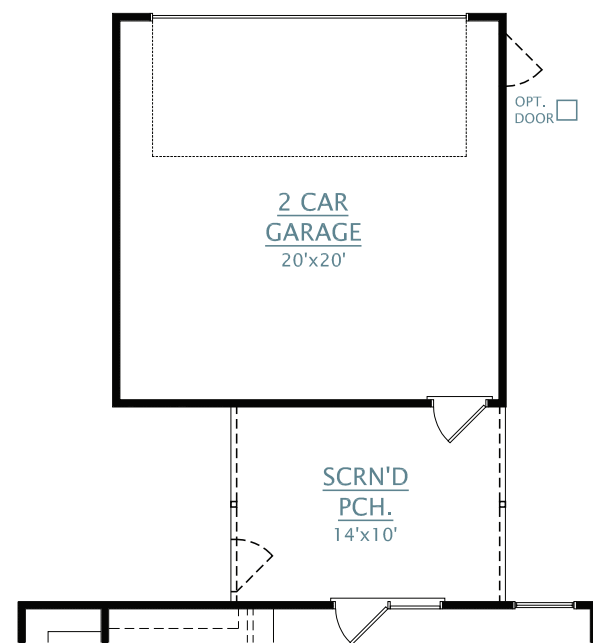
☐ OPT. 2 CAR DETACHED GARAGE WITH PATIO



☐ OPT. 2 CAR DETACHED GARAGE WITH COVERED PORCH



☐ OPT. 2 CAR DETACHED GARAGE WITH SUNROOM



☐ OPT. 2 CAR DETACHED GARAGE WITH SCREENED PORCH

REV.  
7.13.23

Dimensions and square footage are approximate. Elevations shown are artist's concepts. Optional features reflected in floor plan. Floor plans may vary per elevation. Crescent Homes reserves the right to make changes without notice or prior obligation.



CRESCENTHOMES.NET

CHS 843.466.5000 | GVL 864.406.5000 | NVL 615.392.5000

CRESCENT  
HOMES

COTTAGE SERIES  
VIRGINIA

2,433-2,573 SQUARE FEET | 3-4 BEDROOMS | 3 BATHROOMS | 1-2 CAR GARAGE



E



A



B



C



D

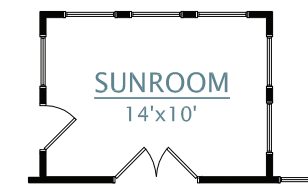


F

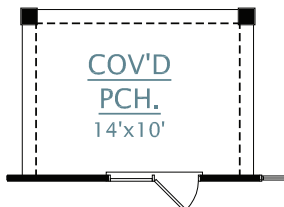
CRESCENT  
HOMES

FIRST FLOOR

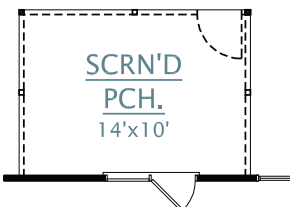
SECOND FLOOR



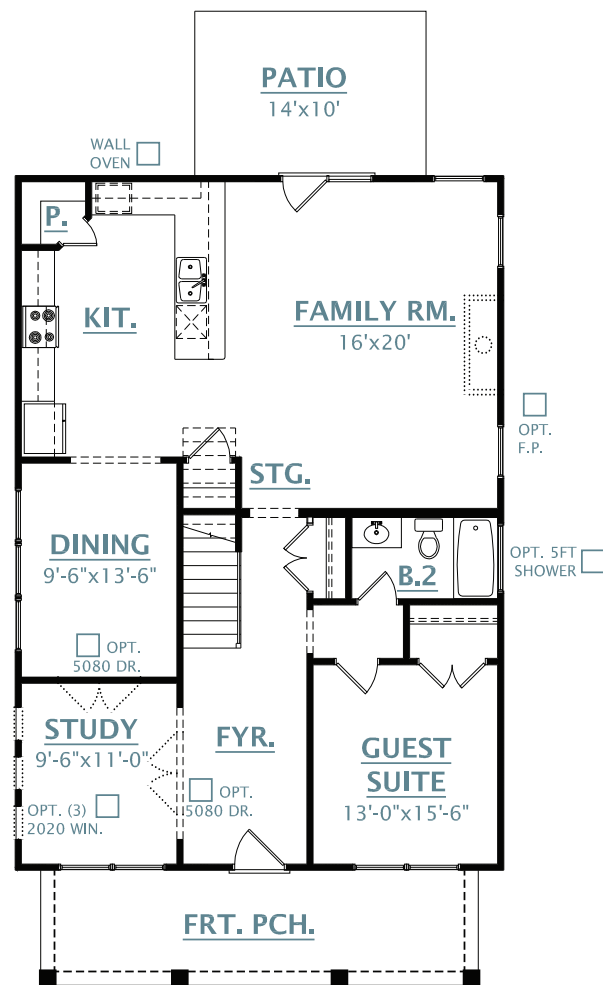
☐ OPT. SUNROOM



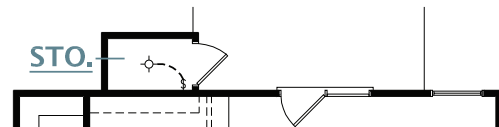
☐ OPT. COVERED PORCH



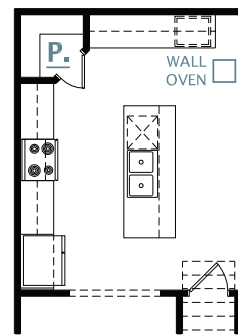
☐ OPT. SCREENED PORCH



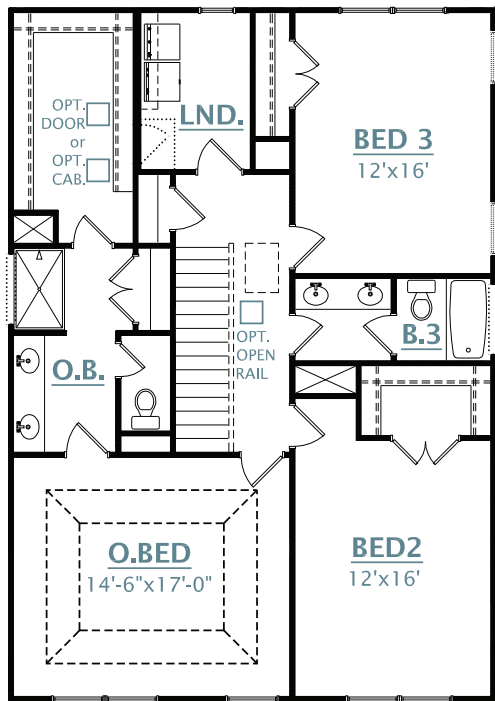
FIRST FLOOR PLAN



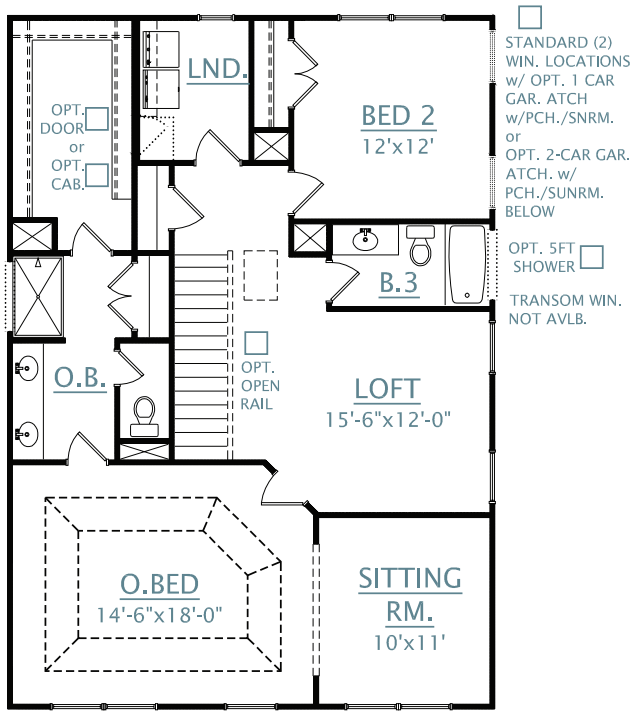
☐ OPT. STORAGE ROOM



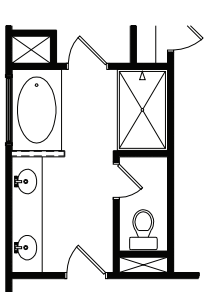
☐ OPT. ALTERNATE KITCHEN



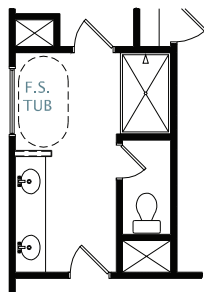
SECOND FLOOR PLAN



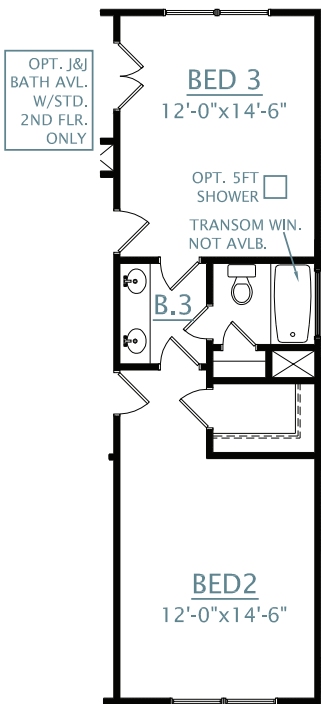
☐ OPT. SECOND FLOOR WITH LOFT AND SITTING ROOM



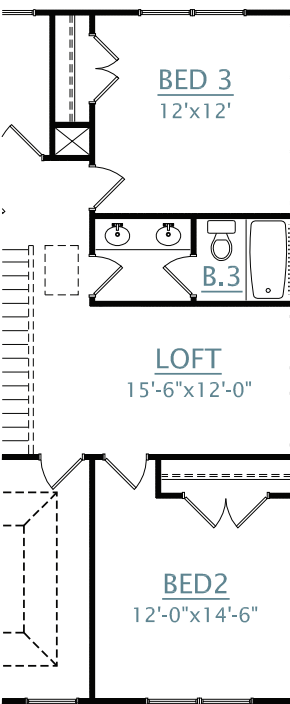
☐ OPT. SEPARATE TUB & SHOWER



☐ OPT. FREE STANDING TUB & SHOWER



☐ OPT. JACK AND JILL BATH



☐ OPT. SECOND FLOOR PLAN WITH LOFT

Dimensions and square footage are approximate. Elevations shown are artist's concepts. Optional features reflected in floor plan. Floor plans may vary per elevation. Crescent Homes reserves the right to make changes without notice or prior obligation.

