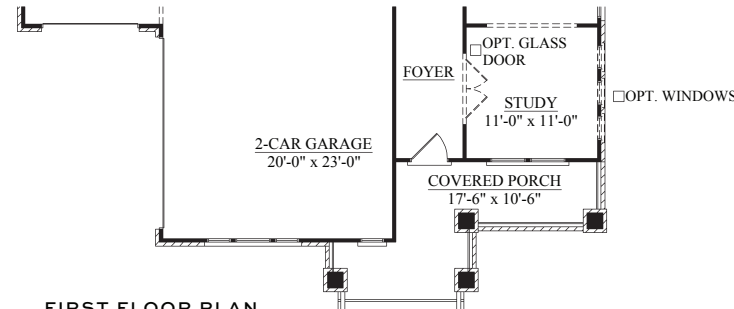
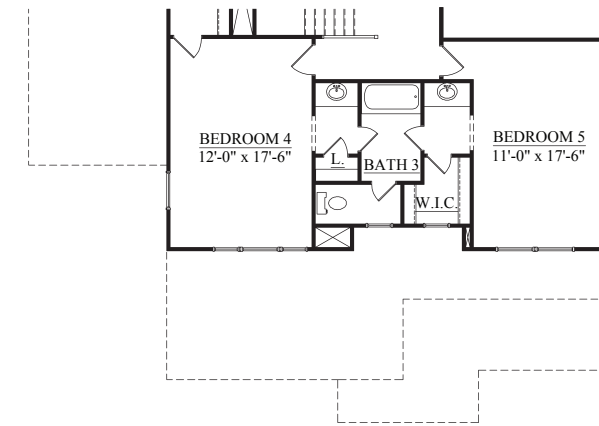


# HAYDEN

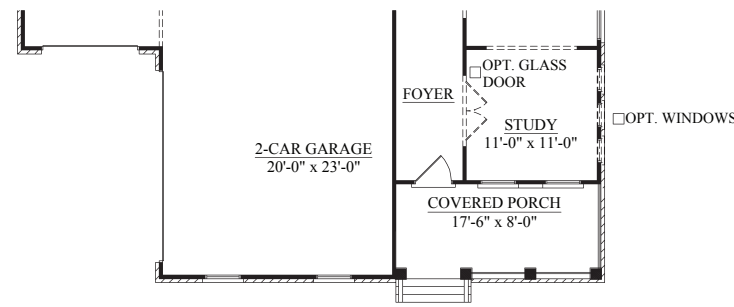
3,898 - 4,089 SQUARE FEET | 5 - 6 BEDROOMS | 3.5 - 4.5 BATHROOMS | 3 CAR GARAGE



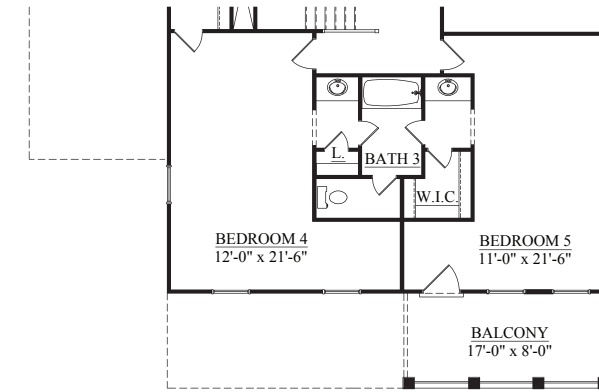
FIRST FLOOR PLAN ELEVATION B



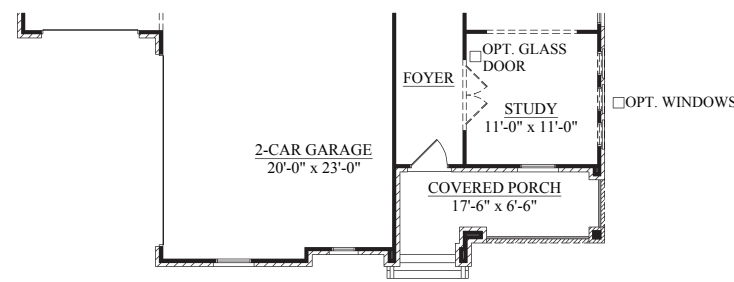
SECOND FLOOR PLAN ELEVATION B



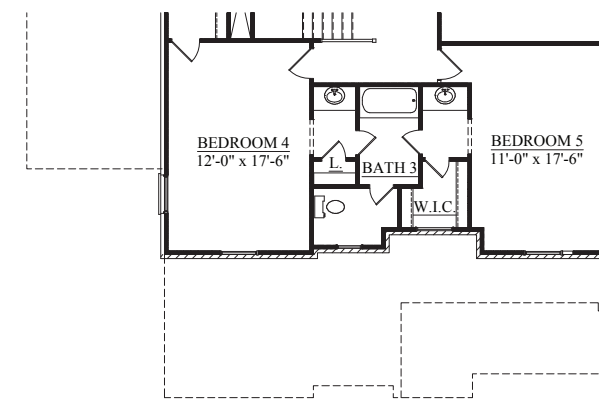
FIRST FLOOR PLAN ELEVATION C



SECOND FLOOR PLAN ELEVATION C



FIRST FLOOR PLAN ELEVATION D



SECOND FLOOR PLAN ELEVATION D



**D**



**A**



**B**



**C**

Dimensions and square footage are approximate. Elevations shown are artist's concepts. Optional features reflected in floor plan. Floor plans may vary per elevation. Crescent Homes reserves the right to make changes without notice or prior obligation.

