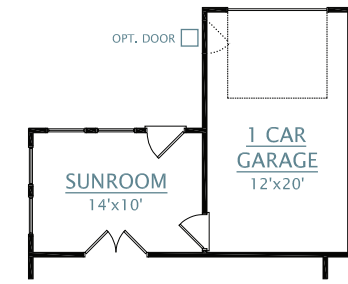
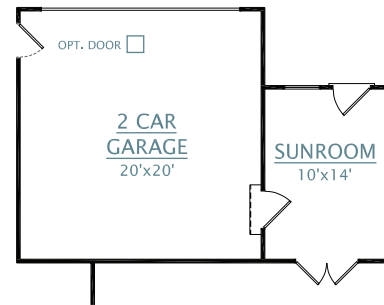


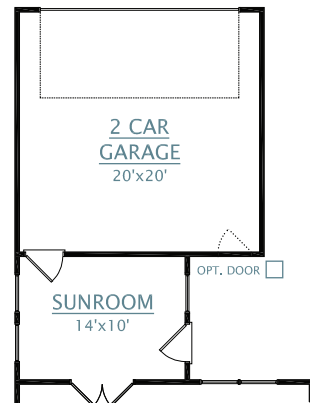
ATTACHED GARAGE OPTIONS



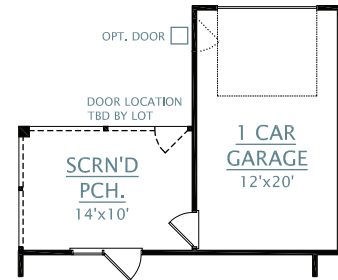
OPT. 1 CAR GARAGE WITH SUNROOM



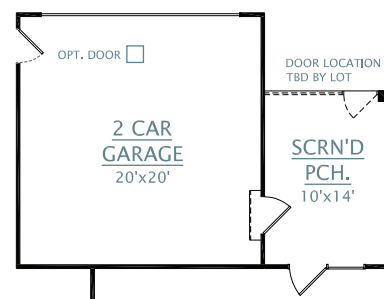
OPT. 2 CAR GARAGE WITH SUNROOM



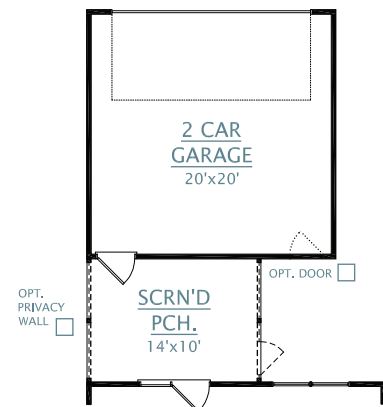
OPT. 2 CAR GARAGE ATTACHED BY SUNROOM



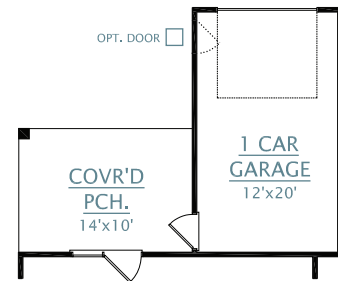
OPT. 1 CAR GARAGE WITH SCREENED PORCH



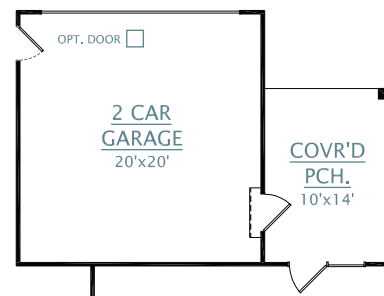
OPT. 2 CAR GARAGE WITH SCREENED PORCH



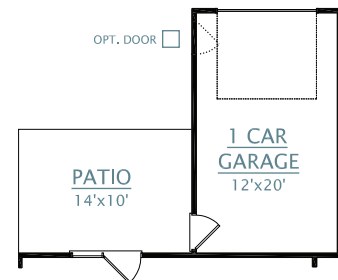
OPT. 2 CAR GARAGE ATTACHED BY SCREENED PORCH



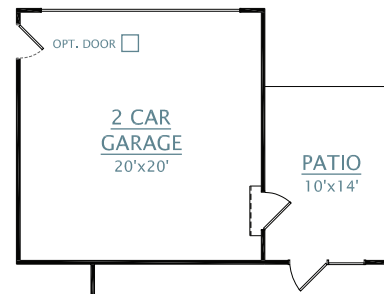
OPT. 1 CAR GARAGE WITH COVERED PORCH



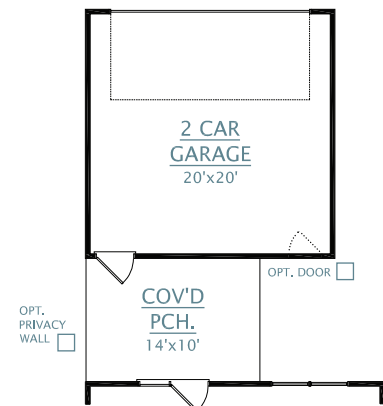
OPT. 2 CAR GARAGE WITH COVERED PORCH



OPT. 1 CAR GARAGE WITH PATIO



OPT. 2 CAR GARAGE WITH PATIO



OPT. 2 CAR GARAGE ATTACHED BY COVERED PORCH

COTTAGE SERIES  
**MURRAY**



2,274-2,414 SQUARE FEET | 3-4 BEDROOMS | 2.5-3.5 BATHROOMS | 1-2 CAR GARAGE



D



A



B



C

REV. 1.31.22 Dimensions and square footage are approximate. Elevations shown are artist's concepts. Optional features reflected in floor plan. Floor plans may vary per elevation. Crescent Homes reserves the right to make changes without notice or prior obligation.



CRESCENTHOMES.NET

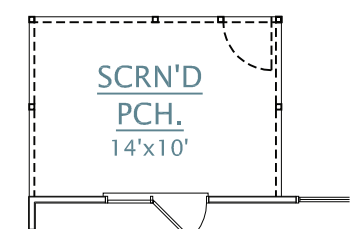
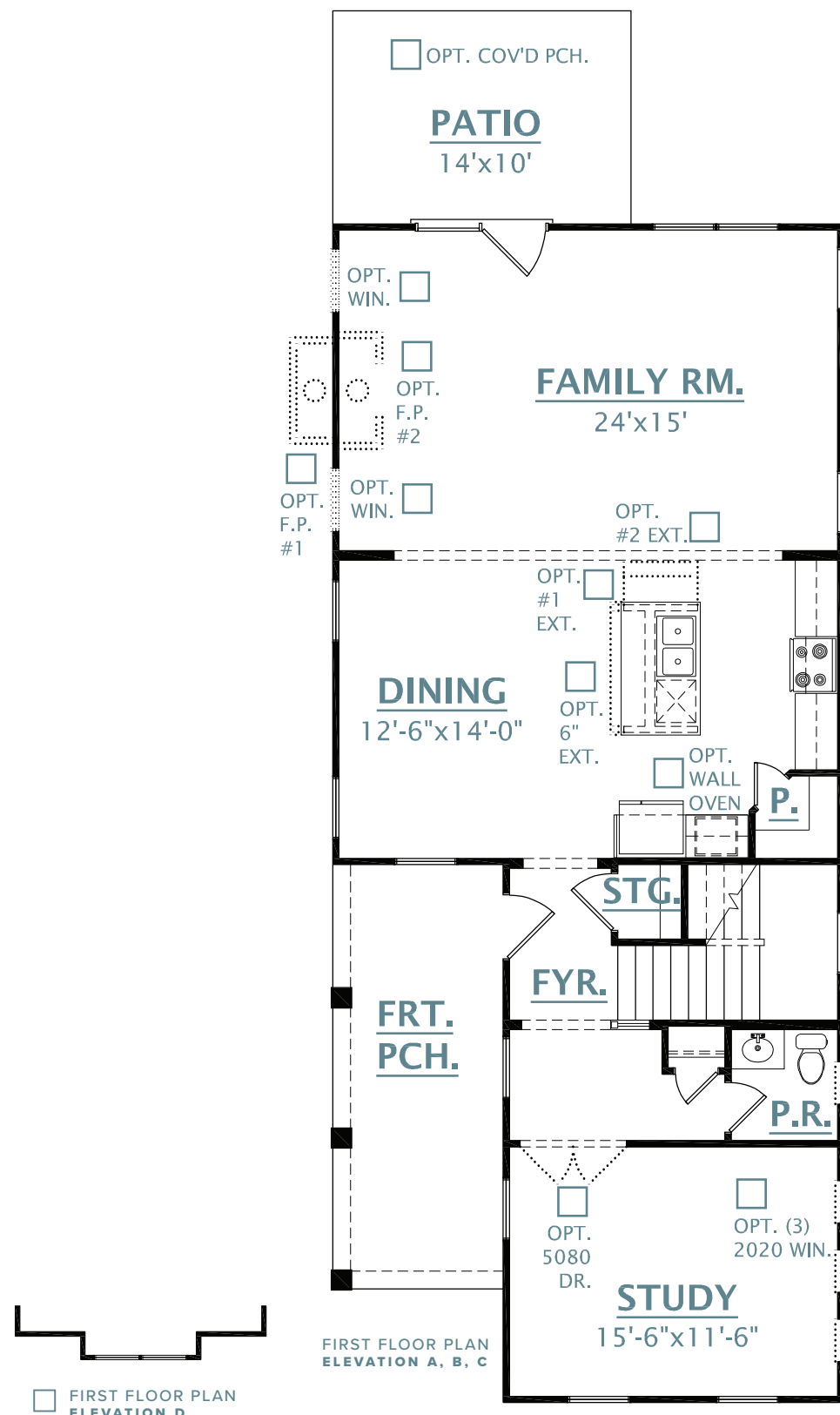
CHS 843.466.5000 | GVL 864.406.5000 | NVL 615.392.5000

CRESCENT HOMES

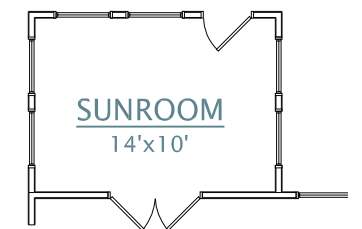
CRESCENT HOMES

FIRST FLOOR

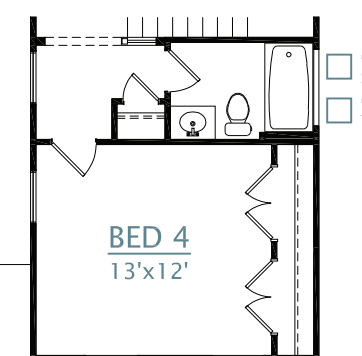
SECOND FLOOR



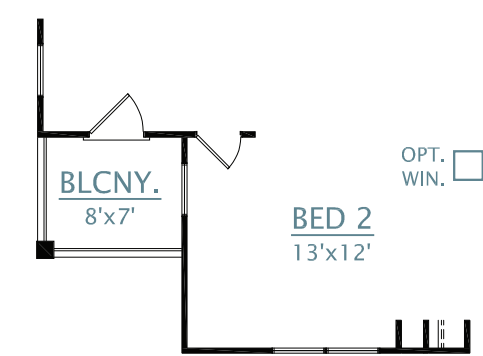
OPTIONAL SCREENED PORCH



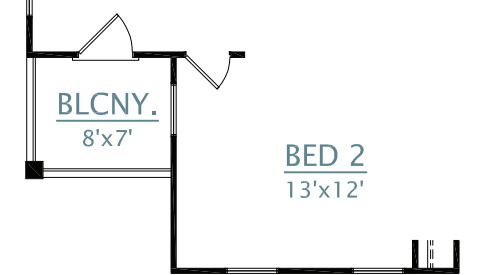
OPTIONAL SUNROOM



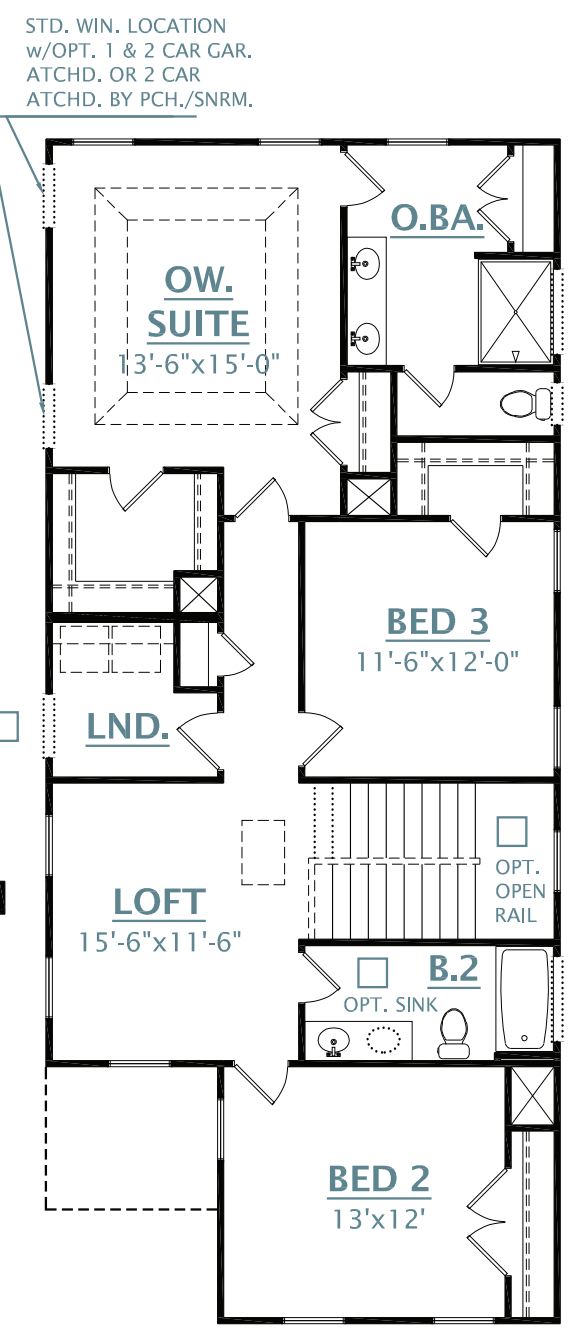
OPTIONAL BEDROOM 4



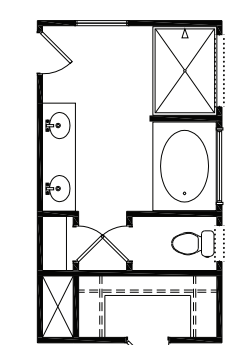
SECOND FLOOR PLAN ELEVATION C



SECOND FLOOR PLAN ELEVATION D



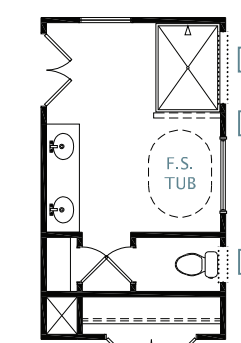
SECOND FLOOR PLAN ELEVATION A, B



OPT. DELUXE MASTER BATH 2

OPT. TRANSOM WIN. w/ 9' UPPER FL. ONLY

OPT. 2040 WIN.



OPT. DELUXE MASTER BATH 3

OPT. TRANSOM WIN. w/ 9' UPPER FL. ONLY

OPT. 5FT SHOWER

OPT. TRANSOM WIN. w/ 9' UPPER FL. ONLY

OPT. TRANSOM WIN. w/ 9' UPPER FL. ONLY

OPT. 1/2 WALL W/GLASS ABV.

OPT. 2040 WIN.

OPT. TRANSOM WIN. w/ 9' UPPER FL. ONLY

OPT. 1/2 WALL W/GLASS ABV.

OPT. 2040 WIN.

Dimensions and square footage are approximate. Elevations shown are artist's concepts. Optional features reflected in floor plan. Floor plans may vary per elevation. Crescent Homes reserves the right to make changes without notice or prior obligation.

