

HISTORIC · MARYVILLE

The Baldwin

1,575 SQUARE FEET · 3 BEDROOMS · 2.5 BATHROOMS



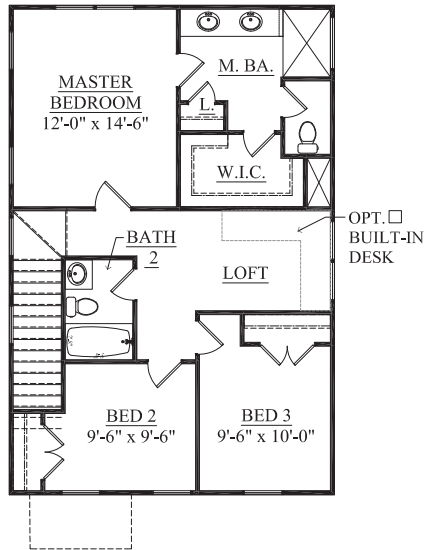
AVENUE



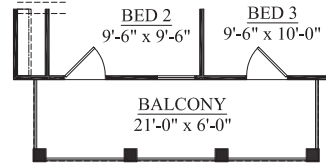
OF OAKS

The Baldwin

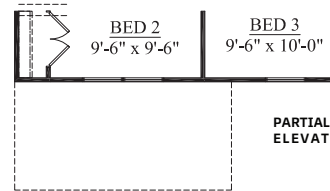
1575	SQUARE FEET
3	BEDROOMS
2.5	BATHROOMS



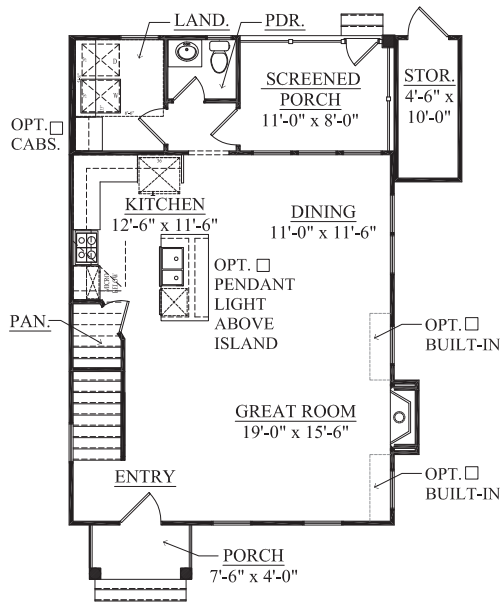
Second Floor Plan
ELEVATION A



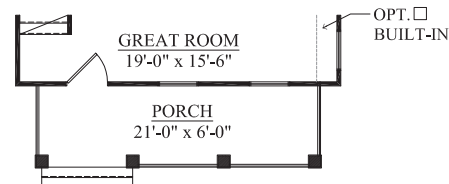
PARTIAL
ELEVATION C



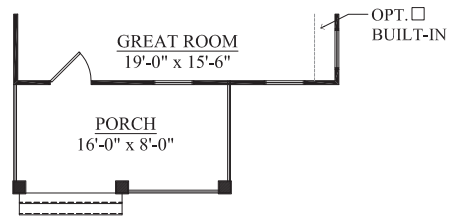
PARTIAL
ELEVATION B



First Floor Plan
ELEVATION A



PARTIAL
ELEVATION C



PARTIAL
ELEVATION B

CrescentHomes.net | 843.466.5000



AVENUE  OF OAKS

Dimensions and square footage are approximate. Elevations shown are artist's concepts. Optional features reflected in floor plan. Floor plans may vary per elevation. Crescent Homes reserves the right to make changes without notice or prior obligation.



REV.
05.06.21