

HISTORIC · MARYVILLE

The Kensington

2,420-3,074 SQUARE FEET · 3-4 BEDROOMS · 3-4 BATHROOMS



AVENUE OF OAKS
WEST OF OAKS
18
86
THE ASHLEY
MARYVILLE

(B)



(A)



(C)



(D)



(E)

AVENUE



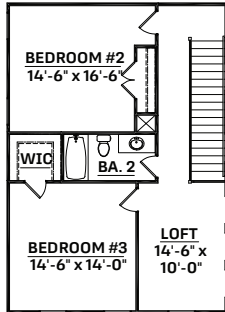
OF OAKS

The Kensington

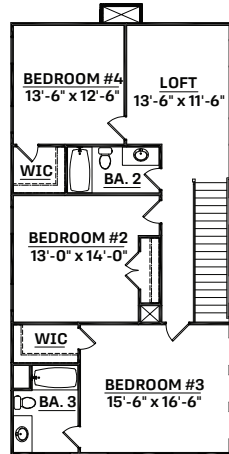
2,420 - 3,074 SQUARE FEET

3 - 4 BEDROOMS

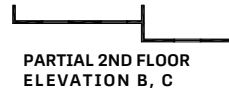
3 - 4 BATHROOMS



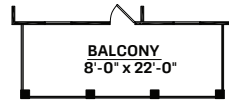
Second Floor Plan
ELEVATION A, D



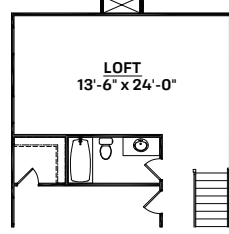
EXT. SECOND LEVEL PLAN



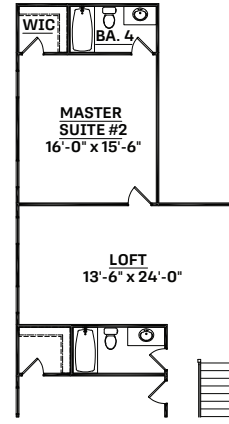
PARTIAL 2ND FLOOR
ELEVATION B, C



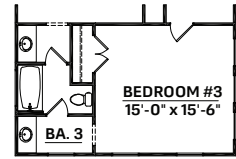
PARTIAL 2ND FLOOR
ELEVATION E



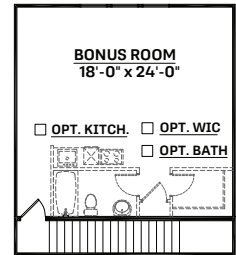
OPT. EXTENDED LOFT I.L.O.
BEDROOM #4 (+ 654 SQ. FT.)



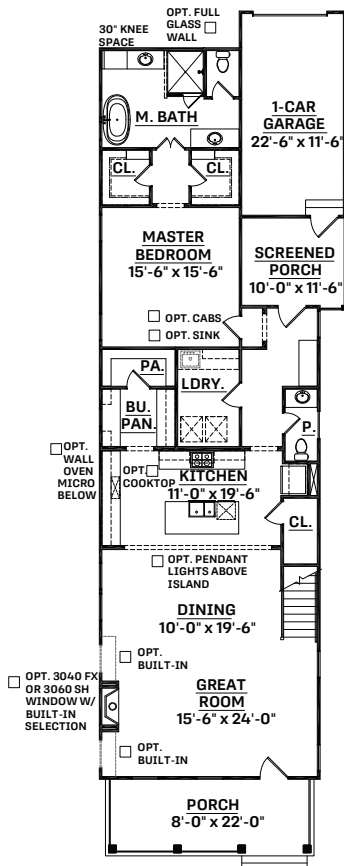
OPT. EXT. LOFT W/ SECOND
MASTER SUITE (+ 654 SQ. FT.)
*MUST USE NEW LOWER CLGS. IN 1ST FLR
MASTER SUITE



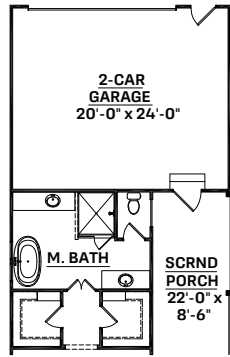
OPT. BATH 3 JACK & JILL
ONLY AVAILABLE W/ OPT. EXT. LAYOUT



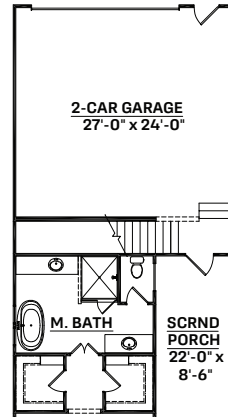
OPT. BONUS ROOM W/
BATH & KITCHENETTE



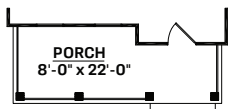
First Floor Plan
ELEVATION A



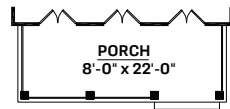
OPT. ATTACHED
2-CAR GARAGE



OPT. ATTACHED 2-CAR
GARAGE W/ BONUS ABOVE



PARTIAL
ELEVATION B, C



PARTIAL
ELEVATION D, E

CrescentHomes.net | 843.466.5000



AVENUE OF OAKS



Dimensions and square footage are approximate. Elevations shown are artist's concepts. Optional features reflected in floor plan. Floor plans may vary per elevation. Crescent Homes reserves the right to make changes without notice or prior obligation.



REV.
03.17.21