

HISTORIC · MARYVILLE

The Ellis

1,855-2,245 SQUARE FEET · 3 BEDROOMS · 2.5-3 BATHROOMS



(C)



(A)



(B)

AVENUE



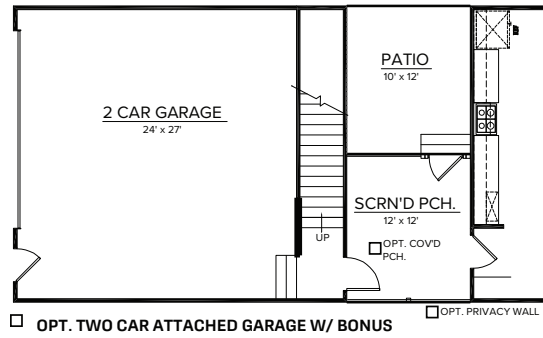
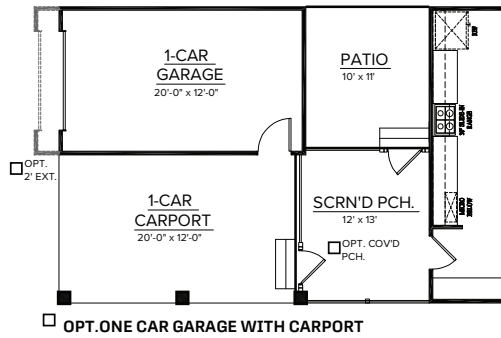
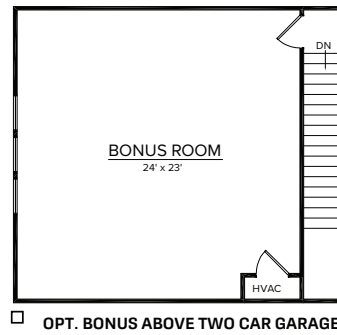
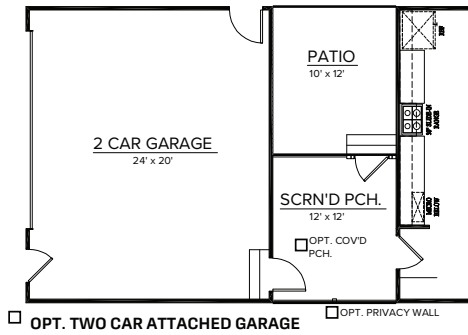
OF OAKS

The Ellis

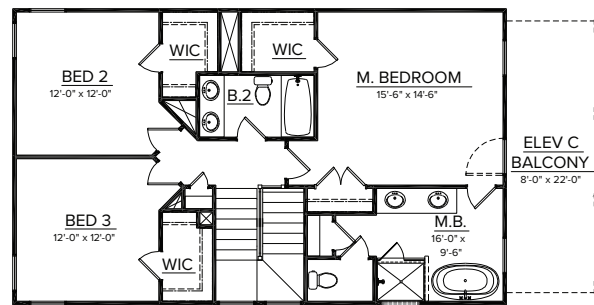
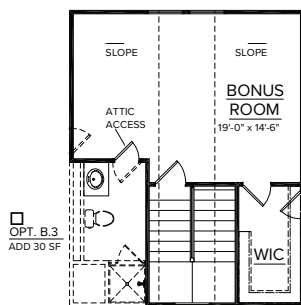
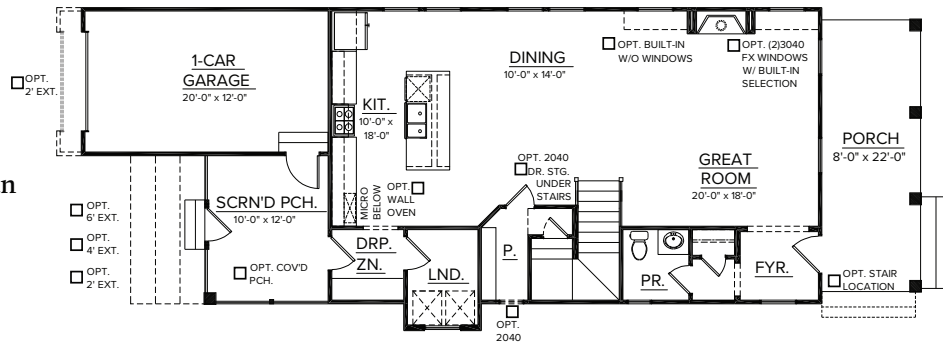
1,855 - 2,245 SQUARE FEET

3 BEDROOMS

2.5 - 3 BATHROOMS



First Floor Plan



CrescentHomes.net | 843.466.5000



AVENUE  OF OAKS

Dimensions and square footage are approximate. Elevations shown are artist's concepts. Optional features reflected in floor plan. Floor plans may vary per elevation. Crescent Homes reserves the right to make changes without notice or prior obligation.



REV.
02.11.21