

HAYDEN

3,876-4,237 SQ. FEET | 4-5 BEDROOMS | 3.5 BATHROOMS | 3 CAR GARAGE



A

REV.
11.4.21

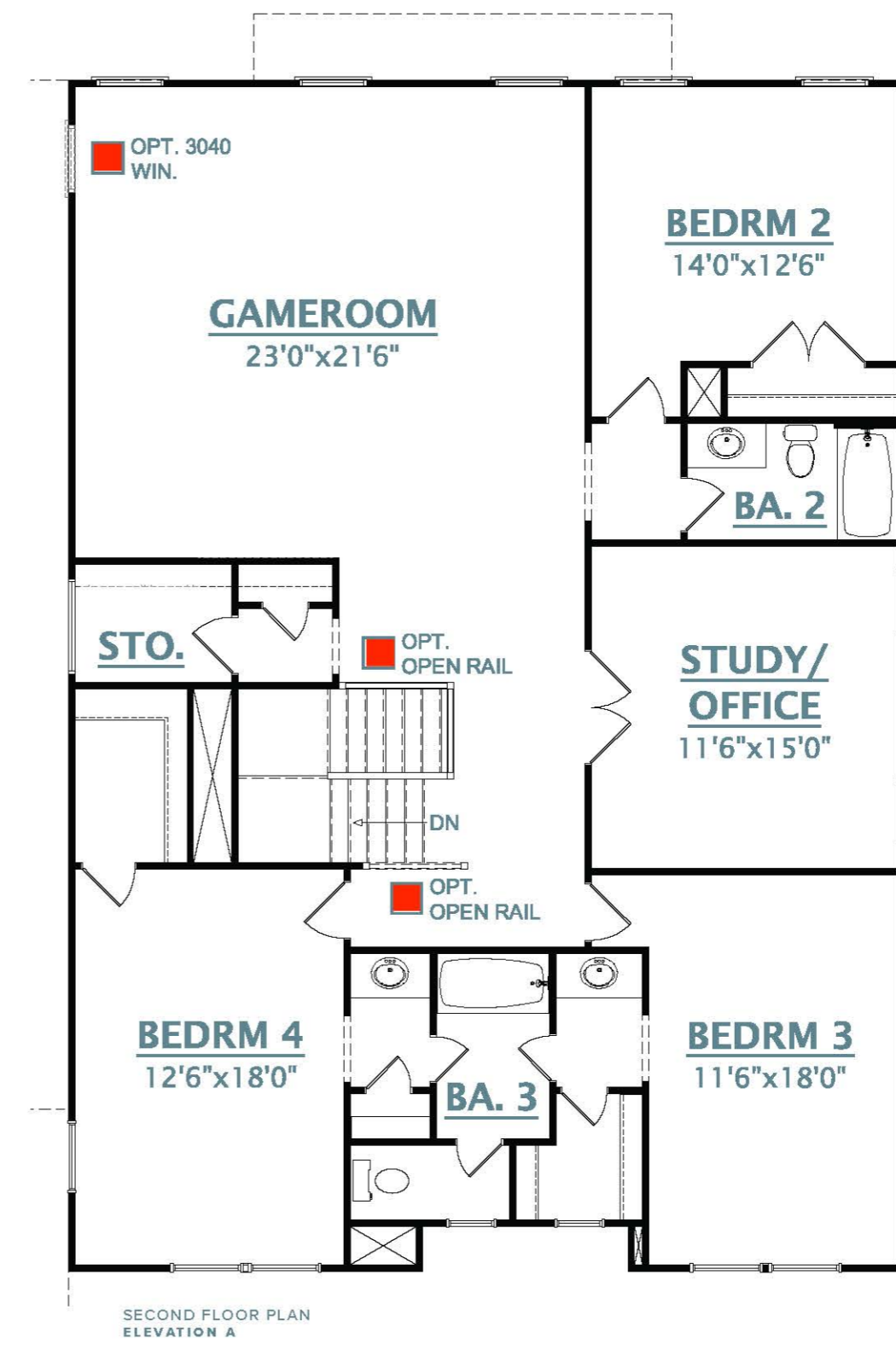
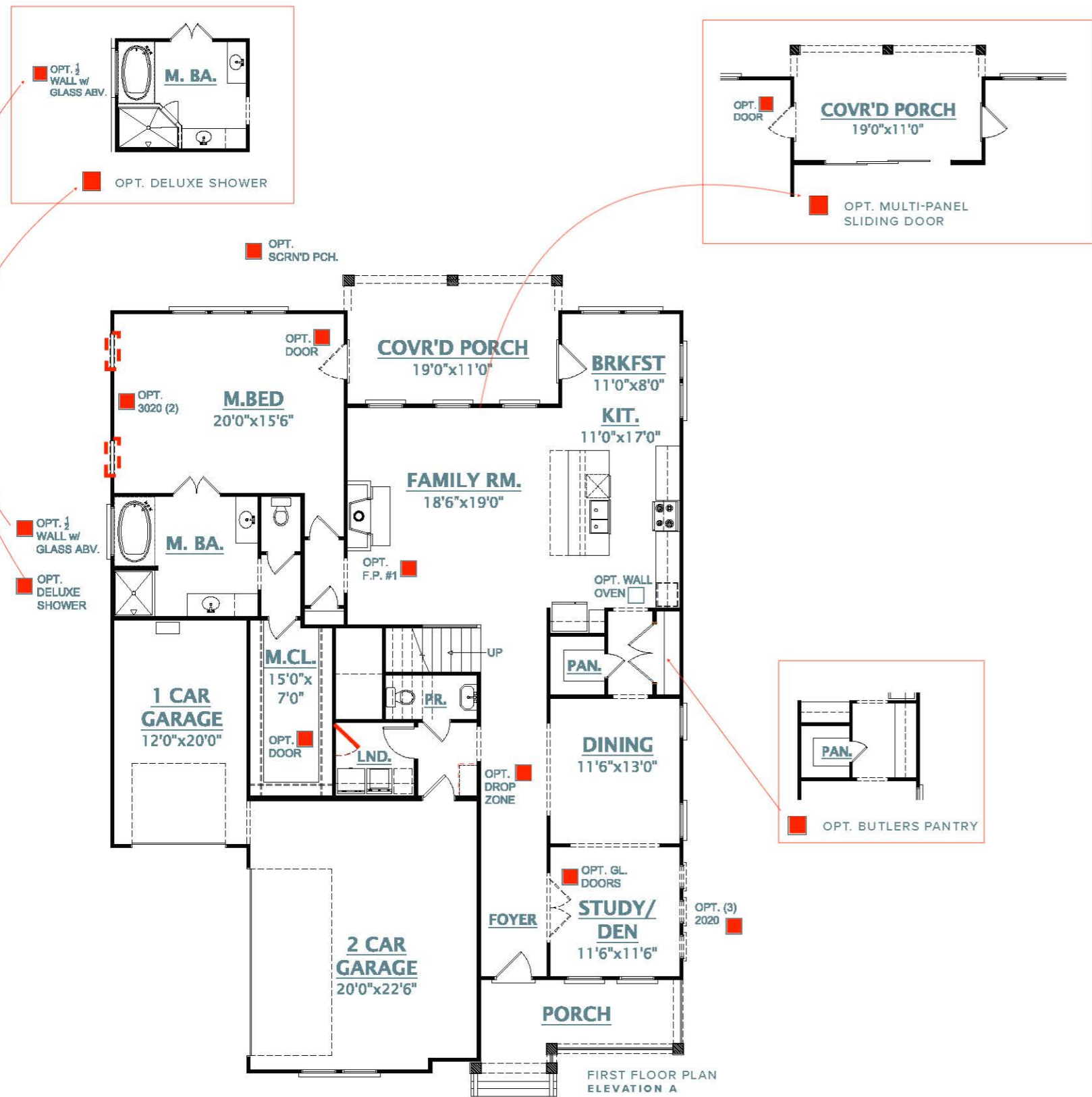
Dimensions and square footage are approximate. Elevations shown are artist's concepts. Optional features reflected in floor plan. Floor plans may vary per elevation. Crescent Homes reserves the right to make changes without notice or prior obligation.



FIRST FLOOR **KRP 79 Structural Rendering SPEC**

KRP 79 Structural Rendering SPEC

SECOND FLOOR



Dimensions and square footage are approximate. Elevations shown are artist's concepts. Optional features reflected in floor plan. Floor plans may vary per elevation. Crescent Homes reserves the right to make changes without notice or prior obligation.

