

HISTORIC · MARYVILLE

The Cottingham

2,051-2,448 SQUARE FEET · 3-4 BEDROOMS · 2.5-3.5 BATHROOMS



AVENUE



OF OAKS

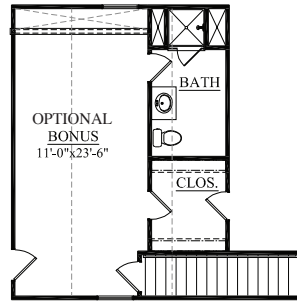
The Cottingham



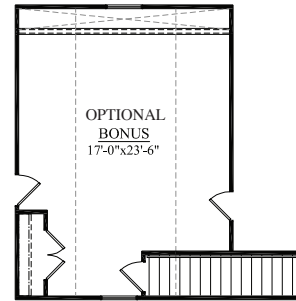
2,051 - 2,448 SQUARE FEET

3 - 4 BEDROOMS

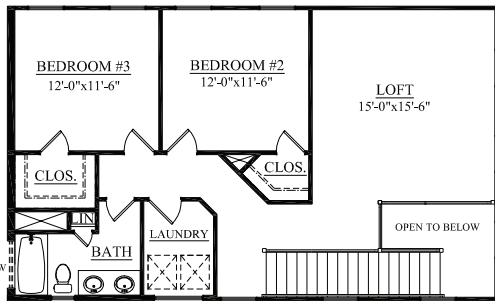
2.5 - 3.5 BATHROOMS



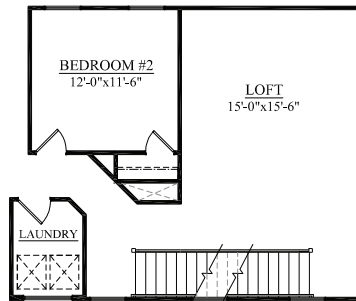
OPT. BONUS ROOM W/ BATH (+397 SQ FT)
ELEVATIONS A, B



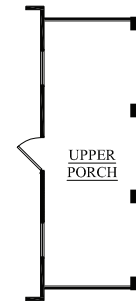
OPT. BONUS ROOM (+397 SQ FT)
ELEVATIONS A, B



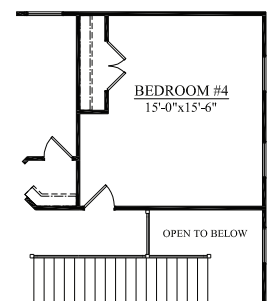
Second Floor Plan
ELEVATIONS A, C



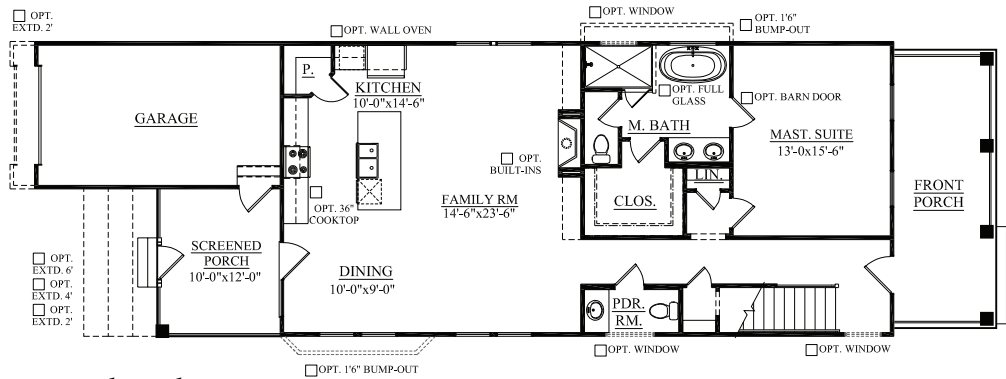
SECOND FLOOR PLAN
WITH BONUS ROOM ABOVE



PARTIAL 2ND FLOOR
ELEVATION B



OPTIONAL BEDROOM #4



First Floor Plan

CrescentHomes.net | 843.466.5000



AVENUE  OF OAKS

Dimensions and square footage are approximate. Elevations shown are artist's concepts. Optional features reflected in floor plan. Floor plans may vary per elevation. Crescent Homes reserves the right to make changes without notice or prior obligation.



REV.
08.28.20