

HISTORIC · MARYVILLE

The Emory

1,961 SQUARE FEET · 3 BEDROOMS · 2.5 BATHROOMS



(C)

(A)



(B)



AVENUE

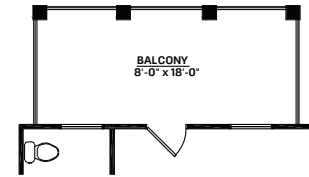


OF OAKS

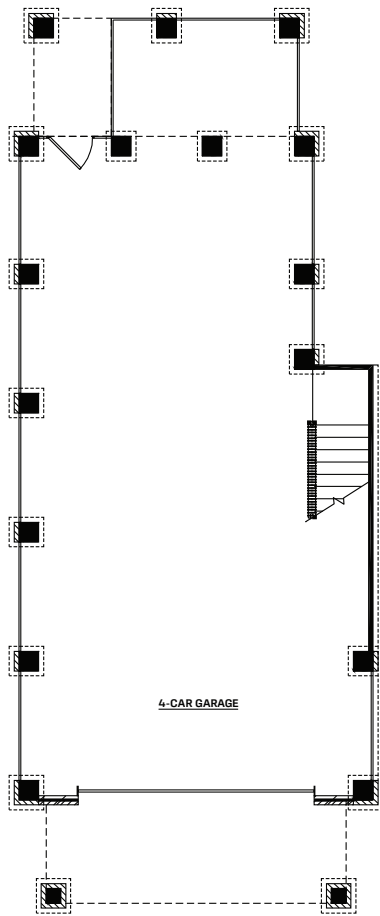
The Emory Drive Under



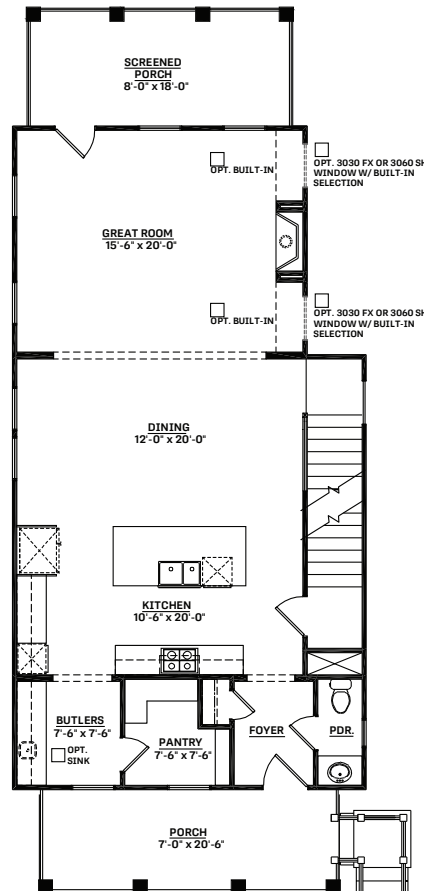
1,961	SQUARE FEET
3	BEDROOMS
2.5	BATHROOMS



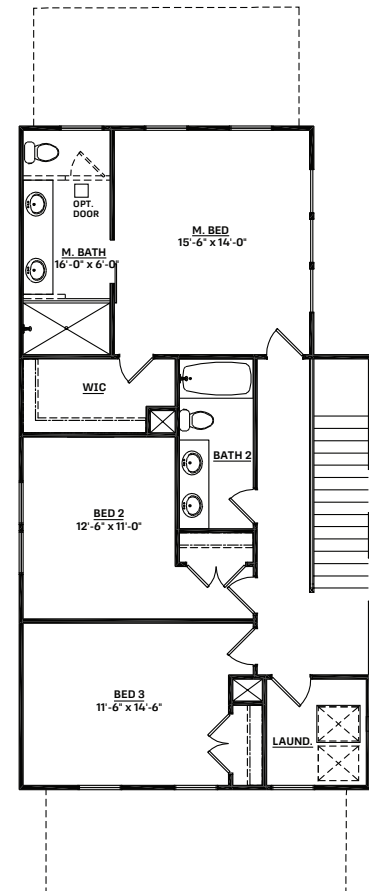
OPT. PARTIAL BALCONY FLOOR PLAN



Ground Floor



First Floor Plan



Second Floor Plan

CrescentHomes.net | 843.466.5000



Dimensions and square footage are approximate. Elevations shown are artist's concepts. Optional features reflected in floor plan. Floor plans may vary per elevation. Crescent Homes reserves the right to make changes without notice or prior obligation.



REV.
07.14.20