

LOCKWOOD  
ESTD ..... GLEN ..... 2013

# MONROE II



2,344 SQUARE FEET

3-4 BEDROOMS

2.5-3.5 BATHROOMS



[CRESCENTHOMES.NET](https://www.crescenthomes.net)

CHS 843.466.5000

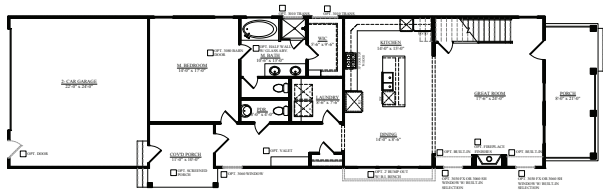
GVL 864.406.5000

NVL 615.392.5000

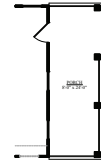
CRESCENT  
HOMES

# THE MONROE II

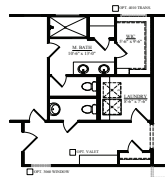
**LOCKWOOD**  
ESTD ..... GLEN ..... 2013



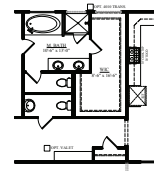
FIRST FLOOR PLAN  
ELEVATION A,C



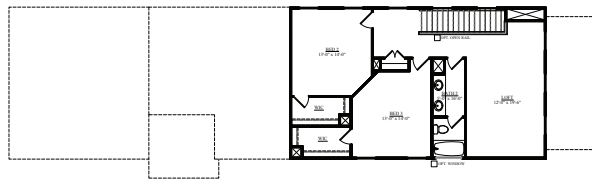
PARTIAL ELEV.  
ELEVATION B



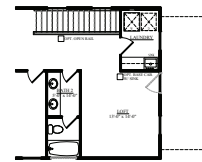
OPT. MASTER BATH



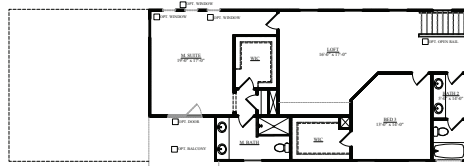
OPT. EXPANDED  
MASTER CLOSET  
\*MUST CHOOSE OPT. LAUNDRY  
LOCATION UPSTAIRS



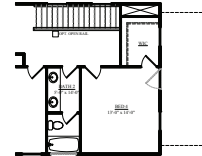
SECOND FLOOR PLAN  
ELEVATION A



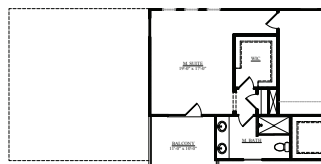
OPT. LAUNDRY LOCATION



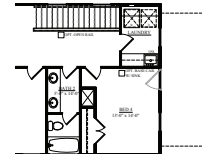
OPT. 2ND MASTER SUITE  
+443 SF



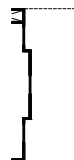
OPT. BED 4 / WIC



OPT. 2ND FLOOR BALCONY  
AT MASTER SUITE



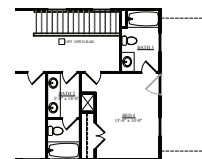
OPT. BED 4 / LAUNDRY



PARTIAL ELEV.  
ELEVATION B



PARTIAL ELEV.  
ELEVATION C



OPT. BED 4 / BATH 3

REV.  
03.25.20

Dimensions and square footage are approximate. Elevations shown are artist's concepts. Optional features reflected in floor plan. Floor plans may vary per elevation. Crescent Homes reserves the right to make changes without notice or prior obligation.



[CRESCENTHOMES.NET](http://CRESCENTHOMES.NET)

CHS 843.466.5000 | GVL 864.406.5000 | NVL 615.392.5000

**CRESCENT  
HOMES**