

HISTORIC · MARYVILLE

The Montague

DRIVE UNDER

2,175-2,281 SQUARE FEET · 3-4 BEDROOMS · 2.5-3 BATHROOMS



AVENUE



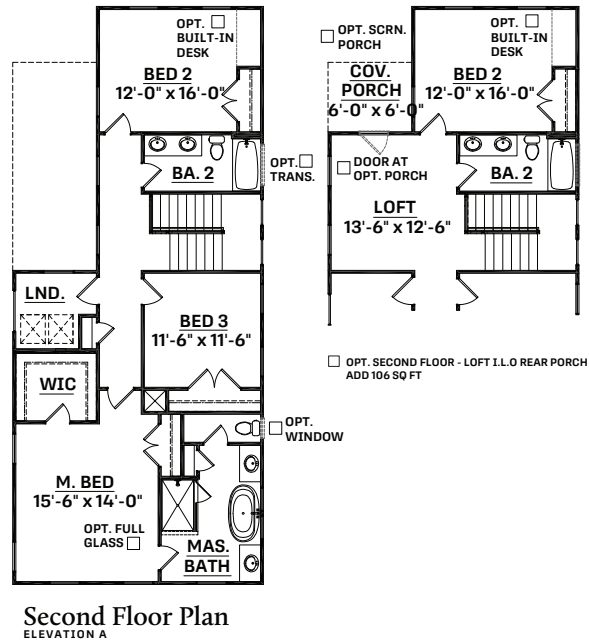
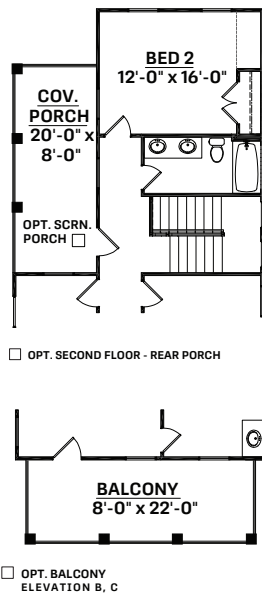
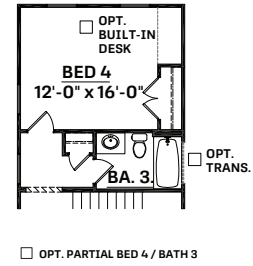
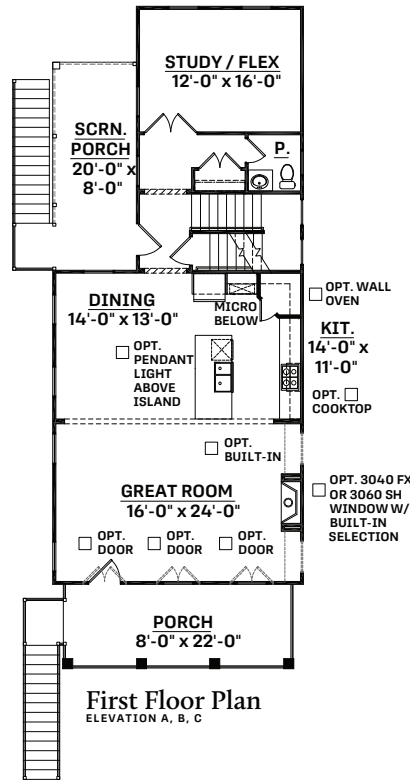
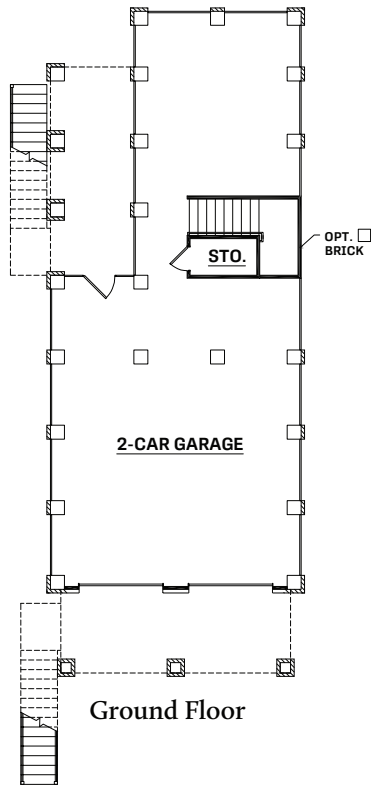
OF OAKS

The Montague Drive Under

2,175 - 2,281 SQUARE FEET

3 - 4 BEDROOMS

2.5 - 3 BATHROOMS



CrescentHomes.net | 843.466.5000



AVENUE  OF OAKS

Dimensions and square footage are approximate. Elevations shown are artist's concepts. Optional features reflected in floor plan. Floor plans may vary per elevation. Crescent Homes reserves the right to make changes without notice or prior obligation.



REV.
11.02.20