

THE PALMETTO SERIES

FENWICK II



+ BONUS ROOM | 2,194 SQUARE FEET | 3-4 BEDROOMS | 2-3 BATHROOMS



SHOWN WITH OPTIMAL METAL ROOF

C



A



B

SHOWN WITH OPTIMAL METAL ROOF

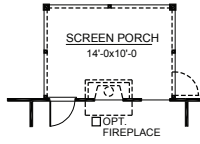
RAILING PER CODE ON ALL ELEVATIONS



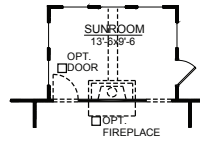
[CRESCENTHOMES.NET](https://www.crescenthomes.net)

CHS 843.466.5000 | GVL 864.406.5000 | NVL 615.392.5000

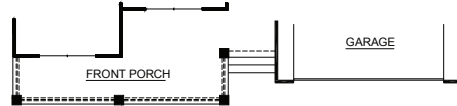
CRESCENT
HOMES



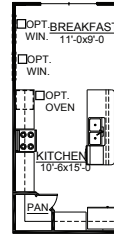
SCREEN PORCH OPTION



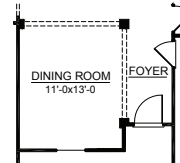
SUNROOM OPTION



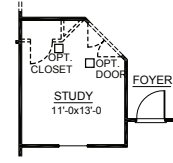
FIRST LEVEL PLAN ELEVATION C



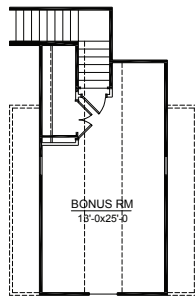
KITCHEN OPTION



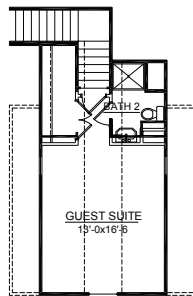
DINING ROOM OPTION



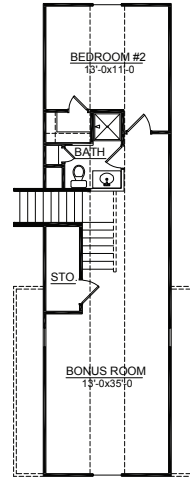
STUDY OPTION



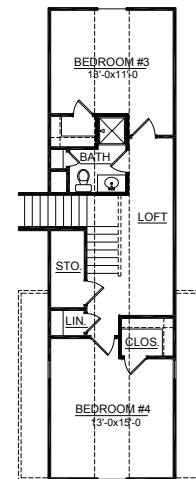
BONUS ROOM PLAN STANDARD



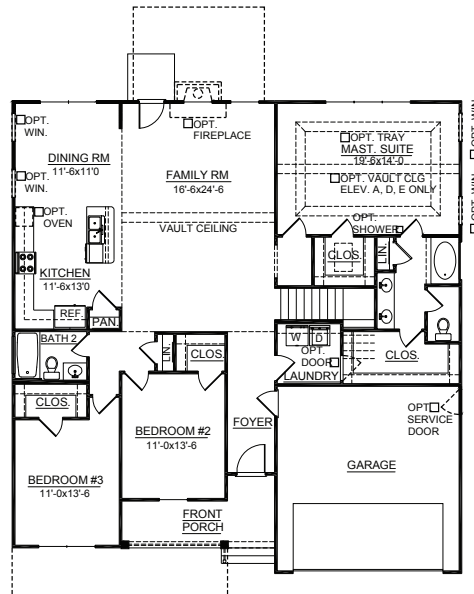
BONUS ROOM PLAN OPT. GUEST SUITE OPT. 2



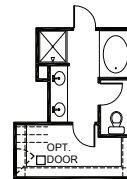
BONUS ROOM PLAN OPT. GUEST SUITE OPT. 3



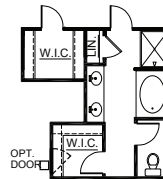
BONUS ROOM PLAN OPT. GUEST SUITE OPT. 4



FIRST FLOOR PLAN WITH BONUS ROOM



DELUXE MASTER BATH WITH BONUS ROOM



DELUXE MASTER BATH OPT. 2 WITH BONUS ROOM

REV. 10.30.19

Dimensions and square footage are approximate. Elevations shown are artist's concepts. Optional features reflected in floor plan. Floor plans may vary per elevation. Crescent Homes reserves the right to make changes without notice or prior obligation.



CRESCENTHOMES.NET

CHS 843.466.5000 | GVL 864.406.5000 | NVL 615.392.5000

CRESCENT HOMES