

the Patriot

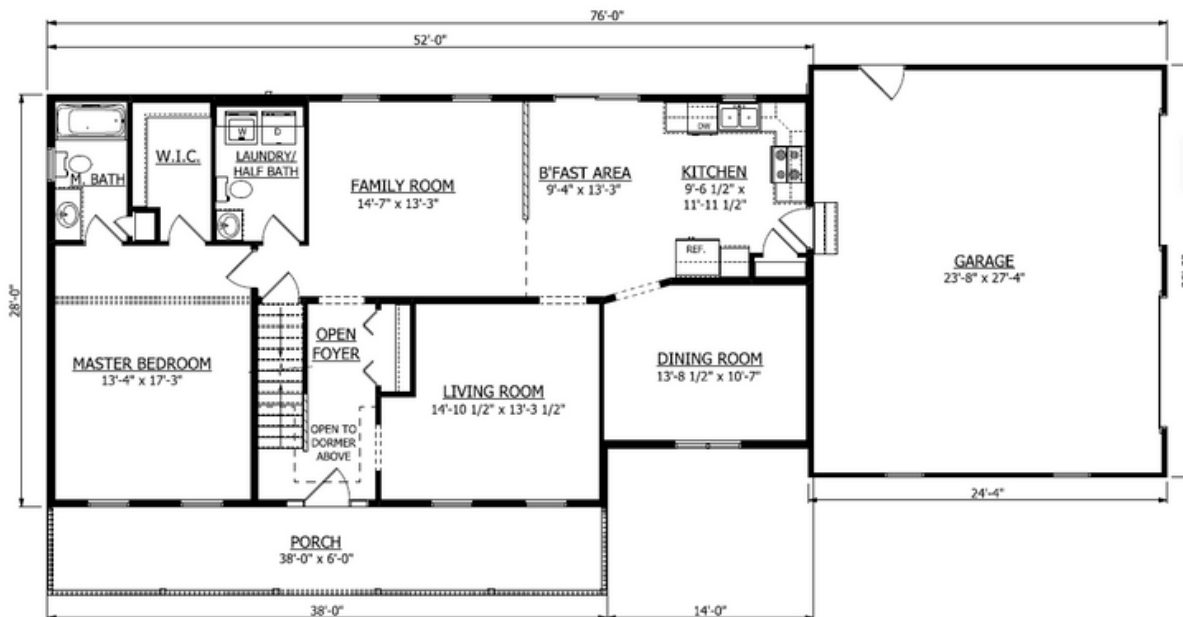


features:

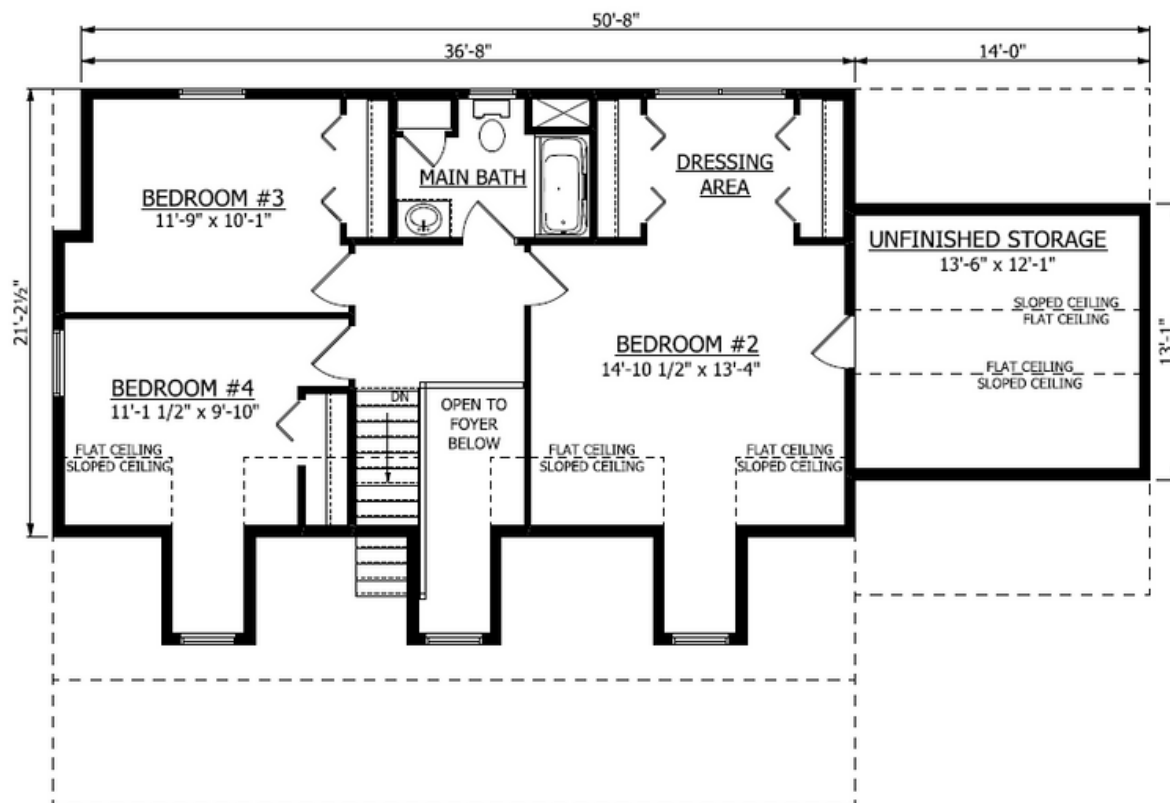
4 BEDROOMS | 2.5 BATHS | Approx. 2217 sq. feet

Spacious Cape Cod Plan features First Floor Master Suite. Easy access to unfinished Storage Space on 2nd Floor.

1st Floor



2nd Floor



the Patriot

First Floor Master Bedroom Suite w/ Walk-in Closet

Convenient First Floor Laundry

Open Kitchen/B'fast Area/ Family Room Space

Formal Dining Room & Private Living Room

Large Upstairs Bedroom w/ Dressing Area & 2 Closets

Unfinished bonus Storage Area