

the Oxford

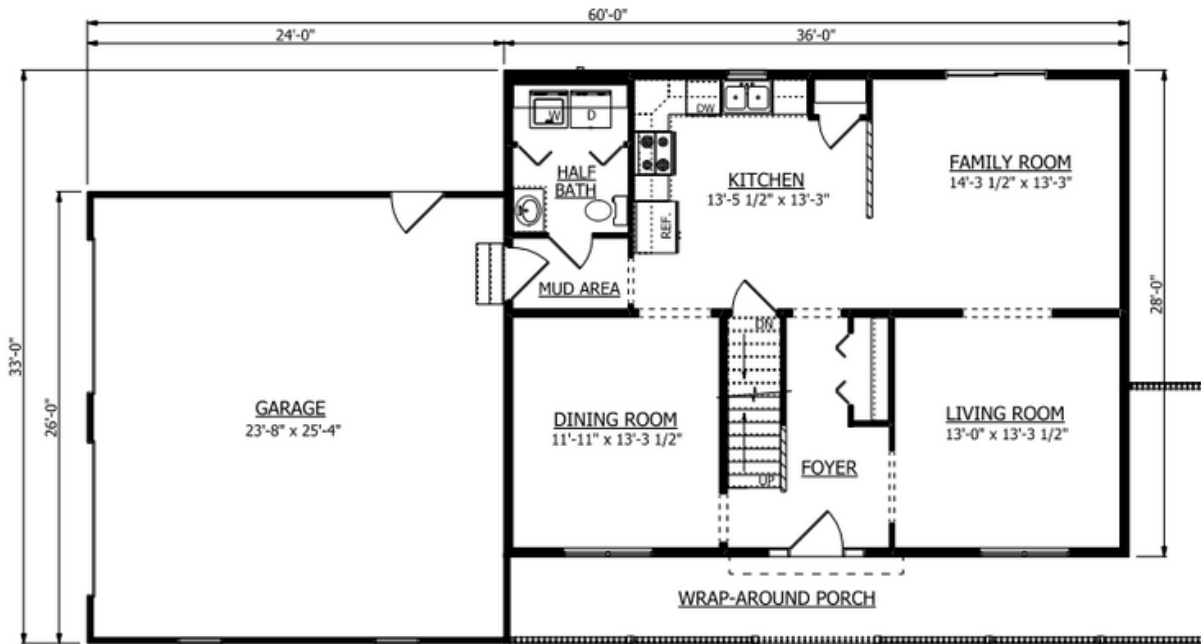


features:

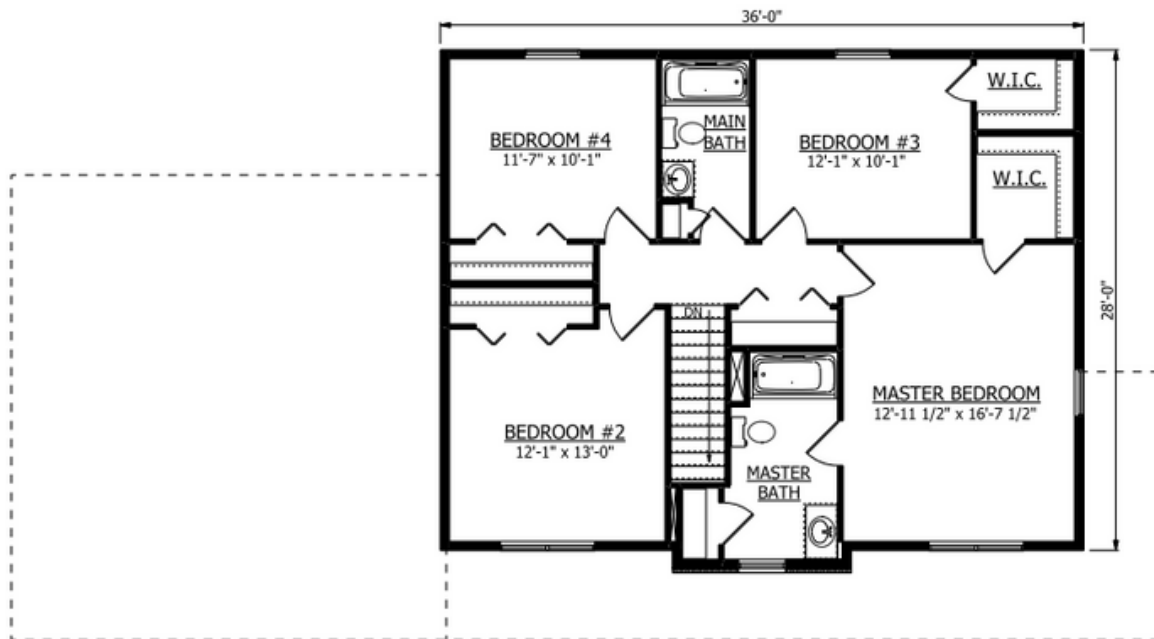
4 BEDROOMS | 2.5 BATHS | Approx. 2016 sq. feet

Two-Story home featuring an open Kitchen & Family Room.
Private Dining and Living Room.

1st Floor



2nd Floor



the Oxford

Open Kitchen/Family Room Space

Kitchen w/ Pantry Closet

Mud Area Transition from Garage w/ Half Bath & Laundry Closet

Wraparound porch

Bump out reverse gable w/ stone veneer

2 car end entry garage