

the Mansfield

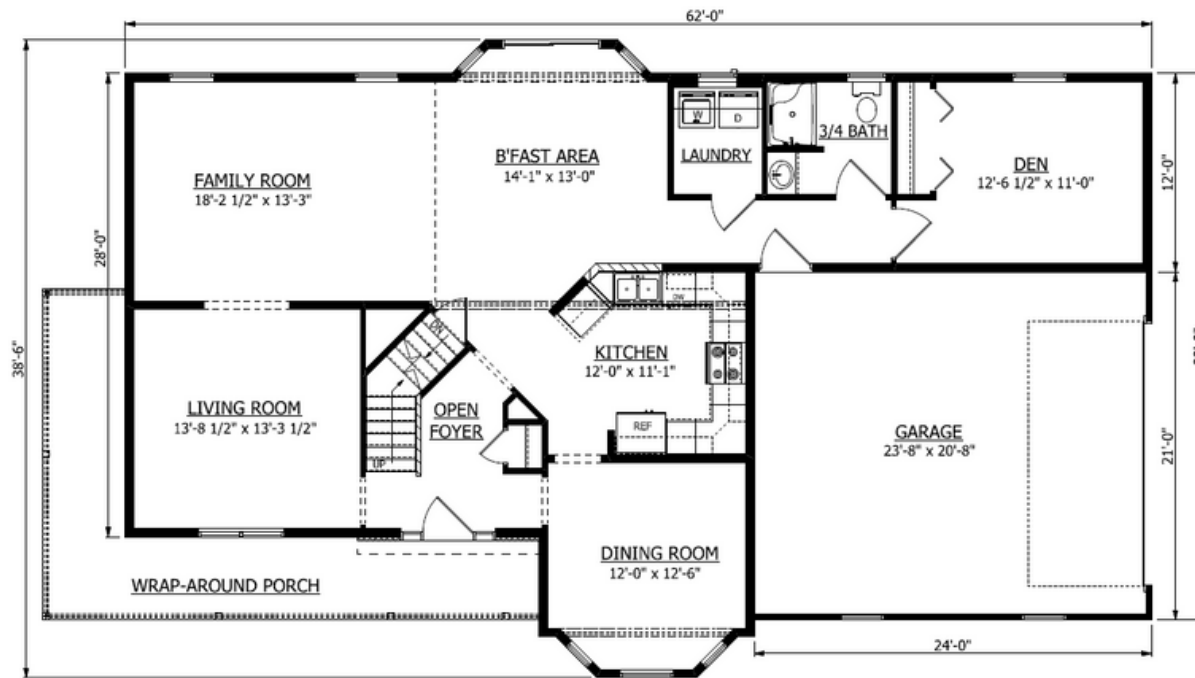


features:

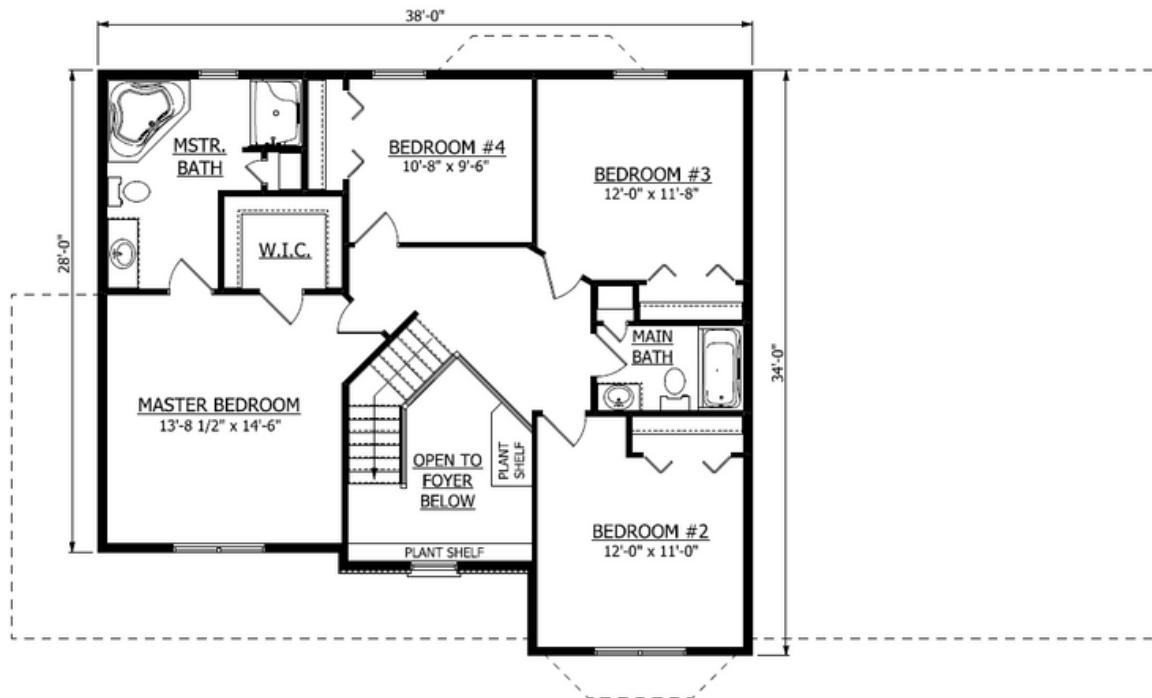
4 (or) 5 BEDROOMS | 2.75 BATHS | Approx. 2522 sq. feet

Spacious Two-Story Home w/ option of First Floor Bedroom. Open Landing at Top of Stairs.

1st Floor



2nd Floor



the Mansfield

Open Foyer w / Unique Stairway Entrance

Versatile downstairs Den can become 1st Floor Bedroom

Open Concept Family Room & Living Room

Master Bedroom Suite w/ Walk-in Closet

Master Bath w/ Corner Soaking Tub & Separate Shower



BROOKSIDE
CUSTOM HOMES