

the
Bakersfield



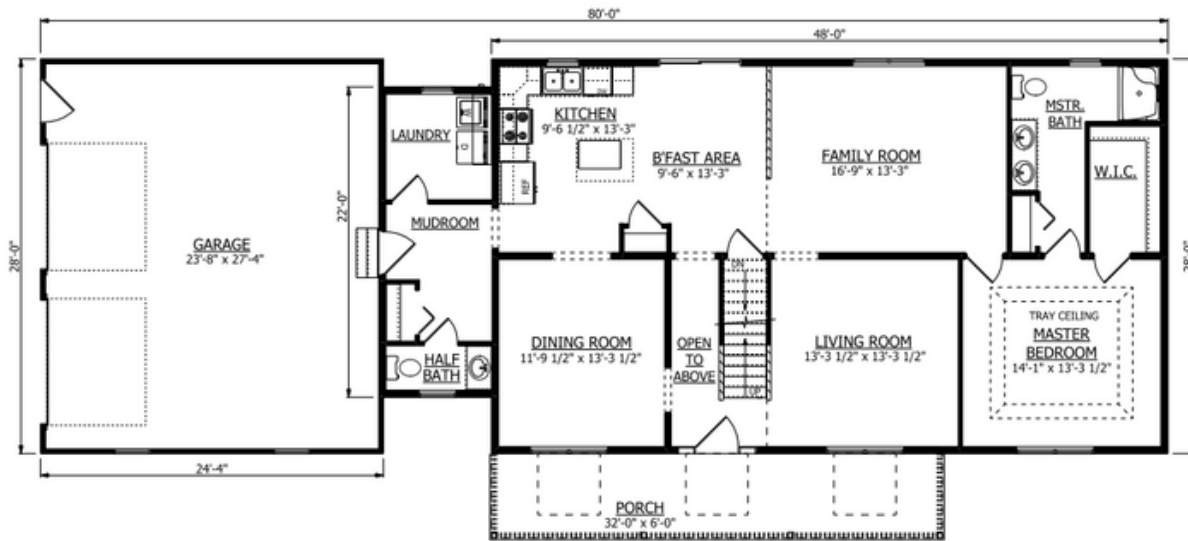
Reverse Floor Plan

features:

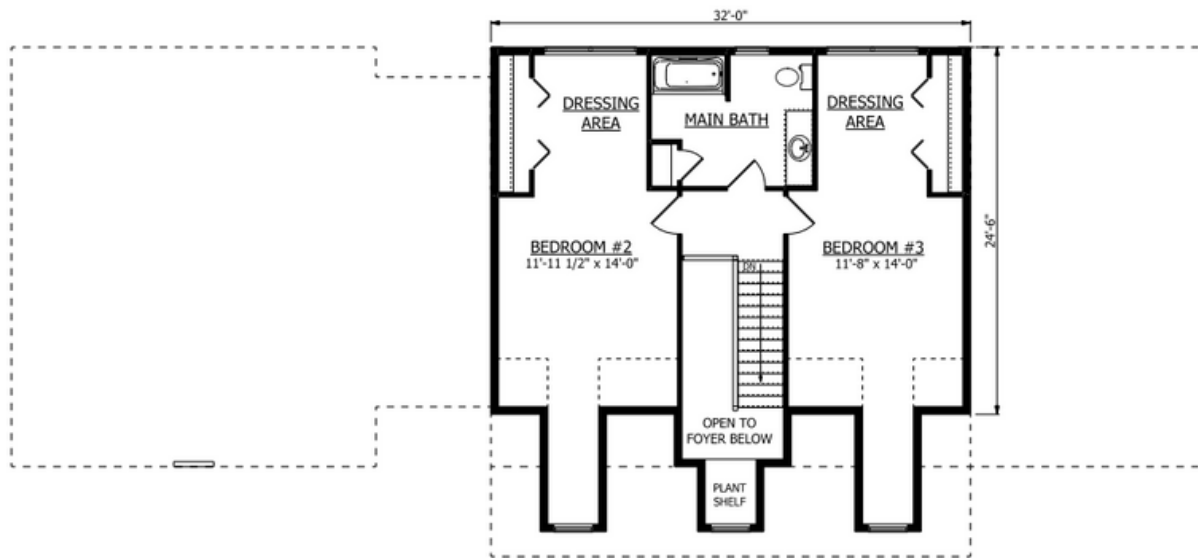
3 BEDROOMS | 2.5 BATHS | Approx. 2363 sq. feet

Spacious Cape Cod Home featuring a Large Mudroom, Master Suite w/ Tray Ceiling, and Private Dining and Living Rooms.

1st Floor



2nd Floor



the Bakersfield

Open Kitchen/Breakfast Area/Family Room

1st Floor Master Bedroom Suite w/ Tray Ceiling, Walk-in Closet & Double Bowl Vanity

First floor Laundry Room

Partial Open Foyer to 2nd floor

3 front dormers; shed dormer 2nd floor rear

Front porch with posts