



BROOKSIDE
CUSTOM HOMES

the Casale
Craftsman

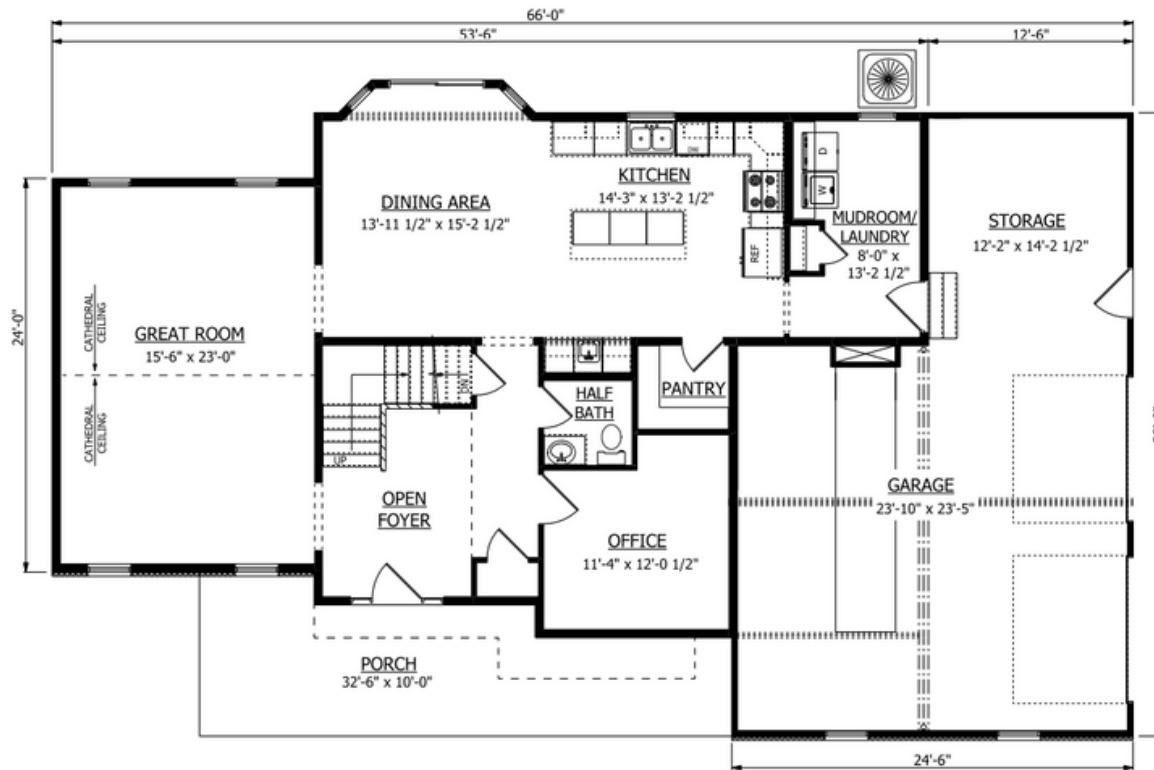


features:

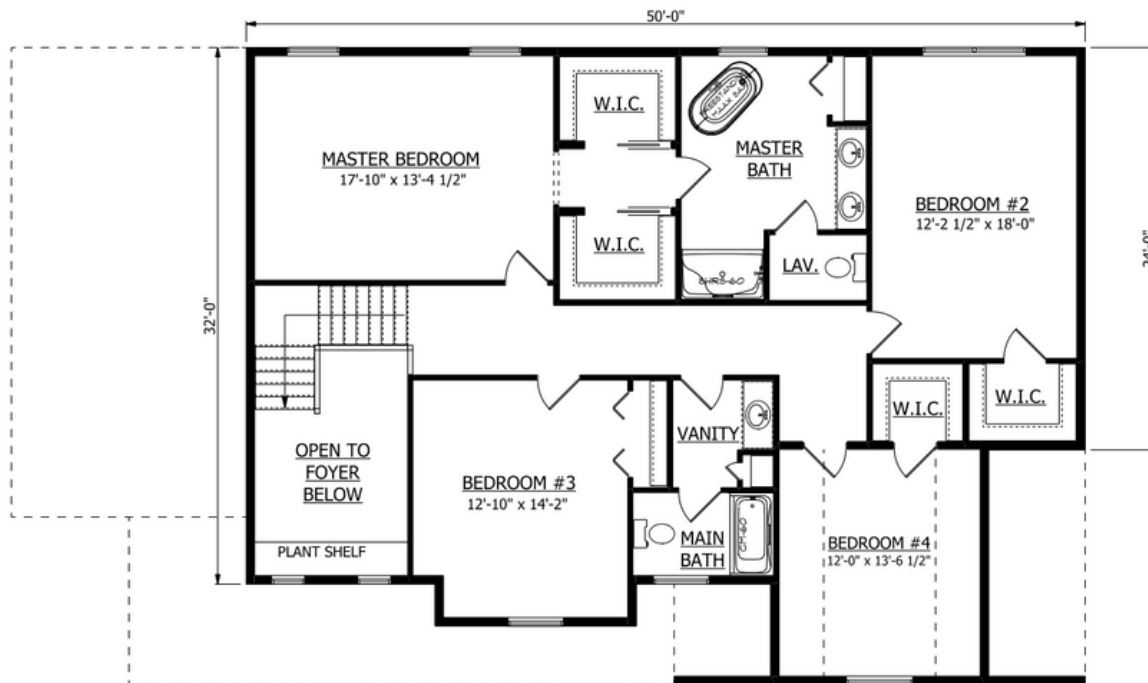
4 - 5 BEDROOMS | 2.5 BATHS | Approx. 2931 sq. feet

Our Most Popular Plan, now in Craftsman Style. Two-Story with Cathedral Great Room, Master Suite, Free-Standing Tub, and much more!

1st Floor



2nd Floor



the Casale Craftsman

Large Great Room w/
Cathedral Ceiling

Open Kitchen/Breakfast Area
w/ Island & Walk-In Pantry

Food Prep Area/Coffee Bar with
Second Kitchen Sink

Master Bedroom Suite with
Dual Walk-In Closets

Master Bathroom with Free-
Standing Tub & Water Closet

Downstairs Office or First Floor
Bedroom (Bedroom #5)

Craftsman exterior featuring
Stone Veneer, Shakes, Gables,
and Front Porch with Stone
Columns



BROOKSIDE
CUSTOM HOMES