

# The Peterman



We are excited to present the

# Peterman

from Insight Homes

A spacious home based on our popular Whatley model, the Peterman has a dramatic front for instant curb appeal. With an owner's suite on the first floor plus two additional bedrooms, and multiple second floor configurations which can get you to a total of 7 bedrooms, this home has room for everyone and room to grow.

Personalize your home for how you live and the style you love with accents such as a stone front, brick foundation, cedar shake impressions and a variety of siding colors and structural options. You may also choose a side-entry garage or a covered front porch in this plan.



## FIRST FLOOR PLAN



## FIRST FLOOR

Expand your

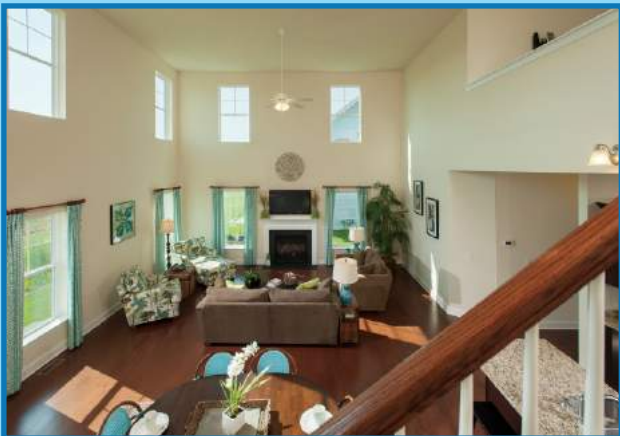
# Peterman

Pictured right is the Peterman floor plan with **4' rear extension** and other popular options, providing the ultimate flexibility and expansive living space.

The options shown include the upgraded **kitchen island**, the **Super Bath #1**, 4 foot rear extension for more living space in the owner's suite and breakfast nook, the garage extension with windows and an outside access door and the **Hampton elevation** exterior which includes a covered front porch.

Popular structural options include:

- Morning room
- Sitting room in owner's suite
- Rear 4 foot extension



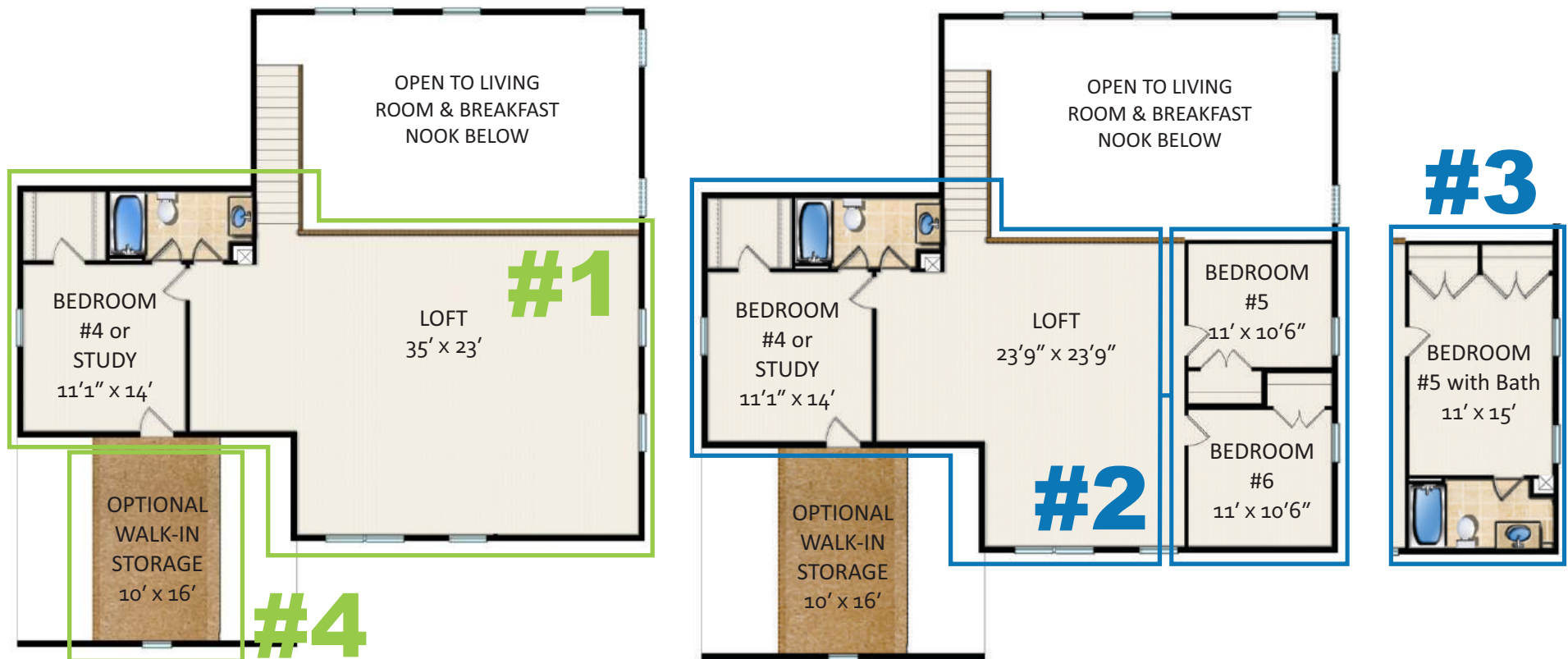
## First Floor with Extension & Options



## FIRST FLOOR WITH OPTIONS

# Loft Options

Multiple loft options are available, some of the most popular depicted below. Choose option #1 for a spacious open loft, with a bedroom and full bath. Option #2 includes a large loft plus two additional bedrooms for a total of three on this level. You can alternatively choose option #3, which is a large bedroom suite with inclusive bath. Lastly, option #4 provides generous walk-in storage with a wood floor above the garage.



## SECOND FLOOR

# KITCHEN Options

A standard Insight Homes kitchen is anything but! This space features a full Energy Star® appliance package including a side-by-side refrigerator with ice and water in the door, a glass top smooth range or available gas range, microwave integrated vent hood, dishwasher and garbage disposal. An extended large peninsula serves as a prep space and eating bar, and an optional island in the center provides additional room to spread out. A spacious pantry, all-wood cabinets and granite counter tops round out the room.

Standard Kitchen layout



Gourmet Kitchen layout



Our standard appliance package includes Energy Star rated GE appliances, with a side-by-side refrigerator with ice and water in the door

Gourmet kitchen with vent hood option



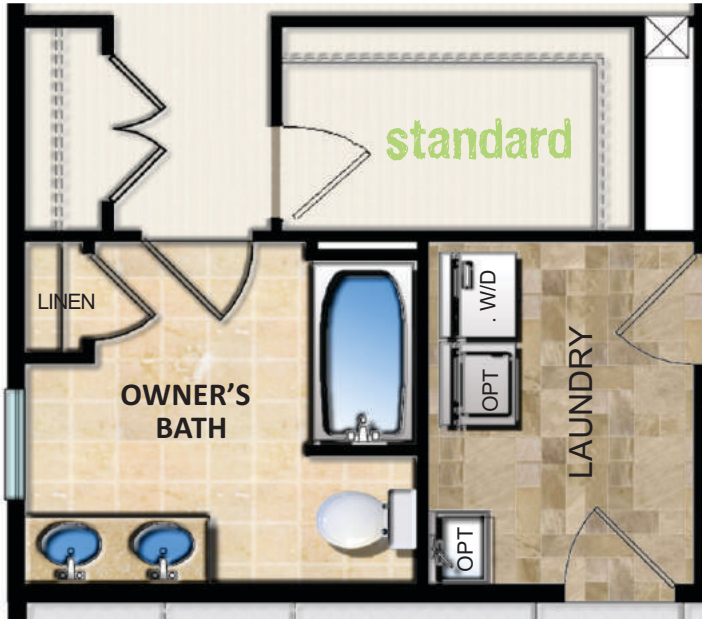
We also offer an optional Gourmet Kitchen upgrade. This includes all of the standard features with the addition of a dual wall oven, and a 36" cook top in the place of a slide-in range. The island is standard in this option. Multiple appliance tiers, as well as vent hoods and other options, are available.

## KITCHEN OPTIONS

STANDARD OWNER'S BATH AND LAUNDRY ROOM

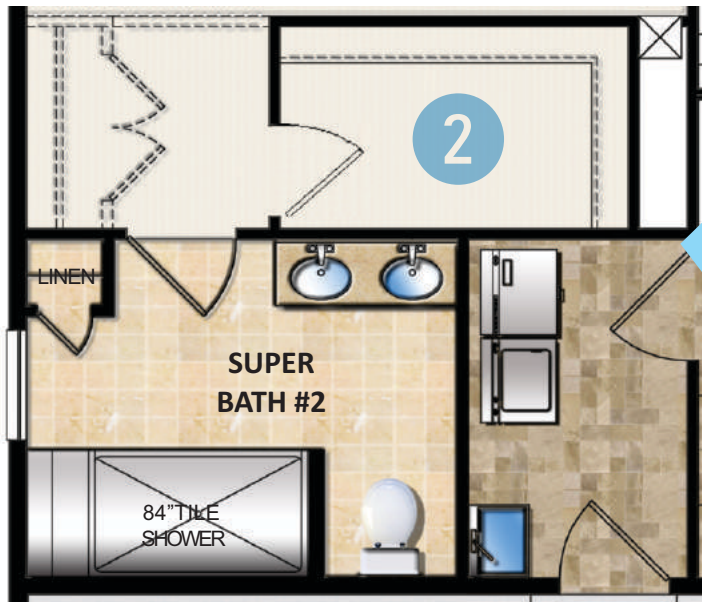
# Owner's Bath Options

SUPER BATH #1 AND LAUNDRY ROOM



**SUPER BATH #1**

This option includes a 60" vanity with dual sinks, a deep, corner soaking tub, a 60" walk-in shower and toilet. Pictured at right.



**SUPER BATH #2**

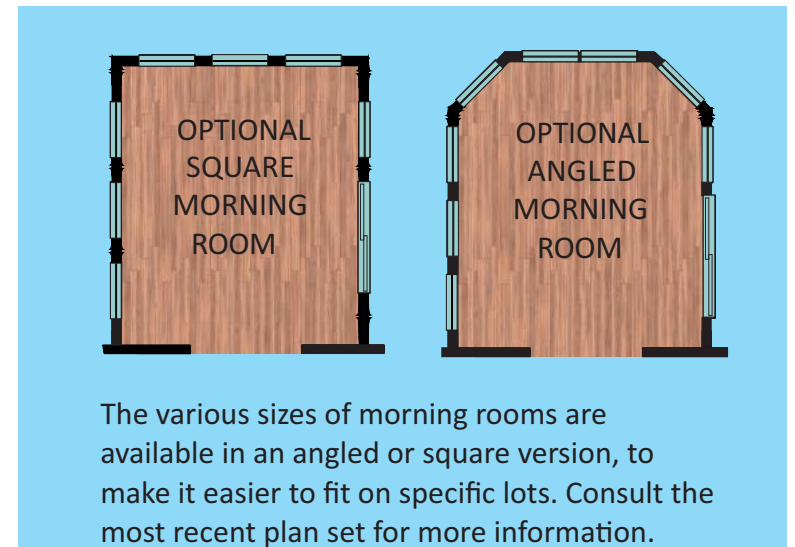
This option includes a 60" vanity with dual sinks, a huge 84" walk-in tiled shower with seat, toilet and linen closet with your choice of custom finishes.



## OWNER'S BATH OPTIONS

# Morning Rooms

Our most popular **STRUCTURAL** option



The morning room is available in multiple different versions, with either square corners, or angled corners, depending on customer choice and local codes. All include Insight Homes' high performance Low-E windows and doors which reduce heat loss and gain, making this a bright, comfortable room to use in all seasons.

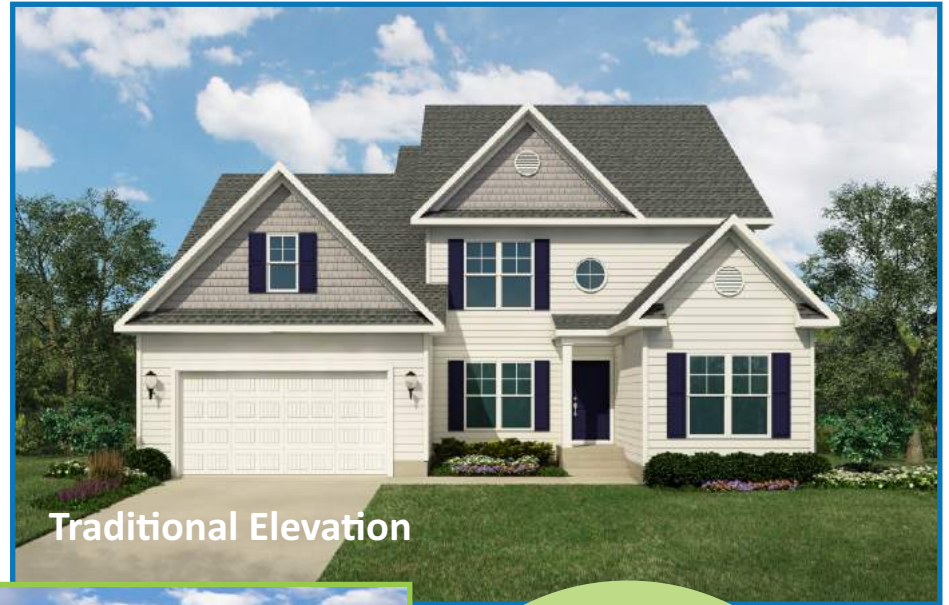
The various sizes of morning rooms are available in an angled or square version, to make it easier to fit on specific lots. Consult the most recent plan set for more information.

## MORNING ROOM OPTIONS



**Heritage Elevation**

*Shown with optional stone front and garage door*



**Traditional Elevation**



**Hampton Elevation**

*Shown with optional front door and garage door styles*

At right and on the cover of this guide is our **Hampton** Elevation. This is our premier design, including decorative molding and paneled columns with a beach-house vibe. Above left is our **Heritage** elevation, showing an optional stone front. Upper right is our **Traditional** elevation, featuring shutters and round decorative vents, plus a unique porthole-style window.

**3**  
distinct exterior  
designs to  
choose from

## PETERMAN EXTERIOR OPTIONS



© 2018 by Insight Homes. All rights reserved.

16255 Sussex Highway  
Bridgeville, DE 19933  
302-337-0400

[itsjustabetterhouse.com](http://itsjustabetterhouse.com)

Details change frequently. Please consult the website for most recent specifications.

Updated 0129/2018