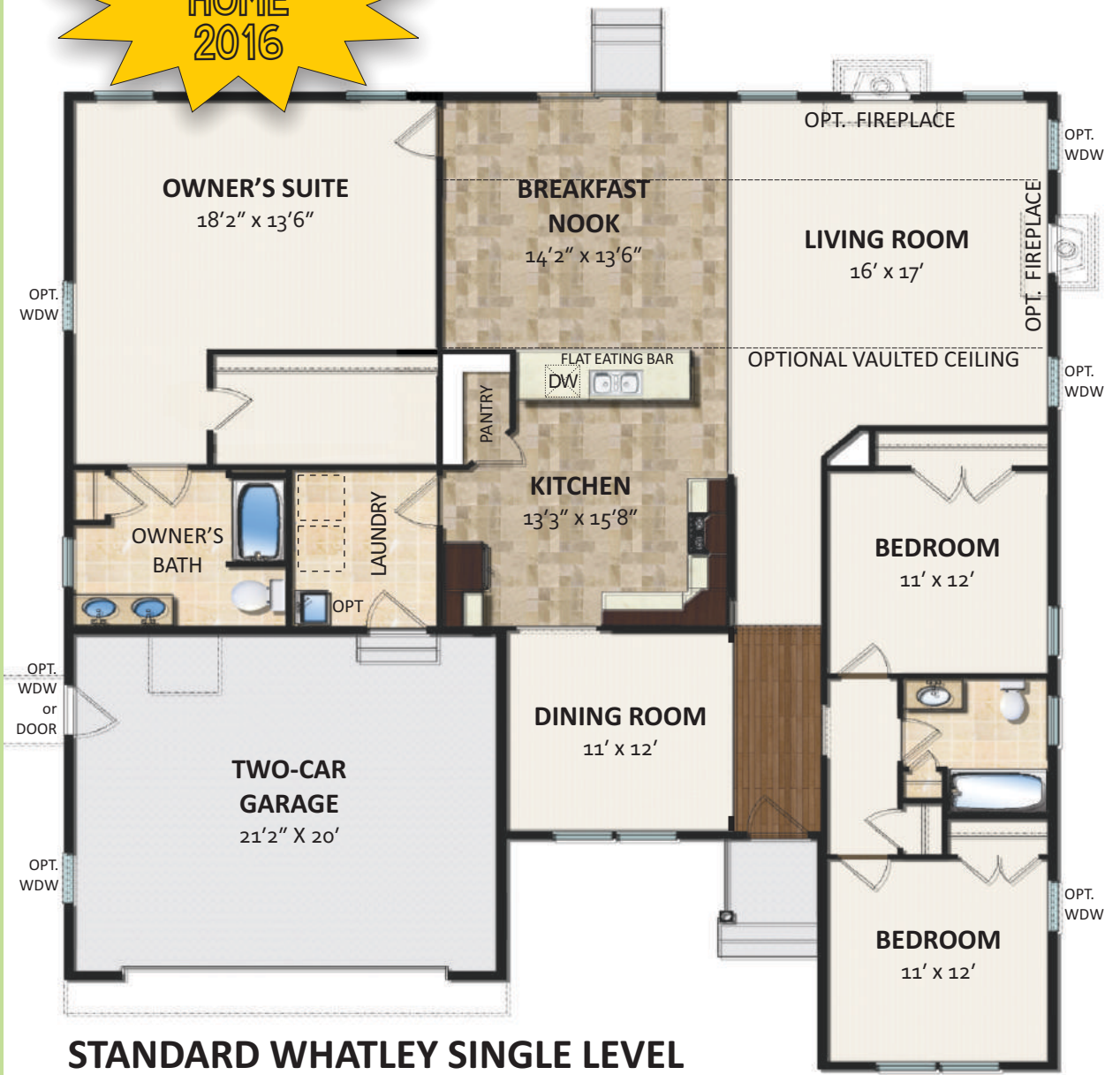


# The Whatley



# Meet the Whatley

There are a number of reasons why this home plan won **Best Home in Delaware for 2016**. From the spacious living room that flows seamlessly into the breakfast and kitchen areas, to the generously sized owner's suite with large closet - there is something to please everyone. The hardwood entry foyer greets you and leads to the formal dining room or ahead to the living spaces. Two bedrooms sharing a hall bath are tucked off the foyer. A large pantry is just one of many thoughtful features in the large, open kitchen.



## FIRST FLOOR

# The **Whatley** is expandable and customizable

Even more living space can be obtained by extending the rear of the home 4 feet, as shown right. Other options for changing the space include a dining room being converted into a bedroom or study. Converting the dining room to a bedroom can allow for a fourth first floor bedroom. Selecting the optional Heritage or Hampton exterior also allows the addition of a second floor; this space can have up to two bedrooms and a full bath with a large, open loft.

Select from these structural options to expand your living space further:

- Morning Room
- Rear Extensions
- Owner's Suite Sitting Room
- Second Floor



Whatley with second floor and morning room, shown

## WHATLEY FIRST FLOOR With Selected Options



Expand your living space outdoors with a wood or composite deck!

Popular options above include the kitchen island, front porch, Super Bath #1, 4' rear extension on all living space, wood flooring and second floor access.

## FIRST FLOOR WITH POPULAR OPTIONS

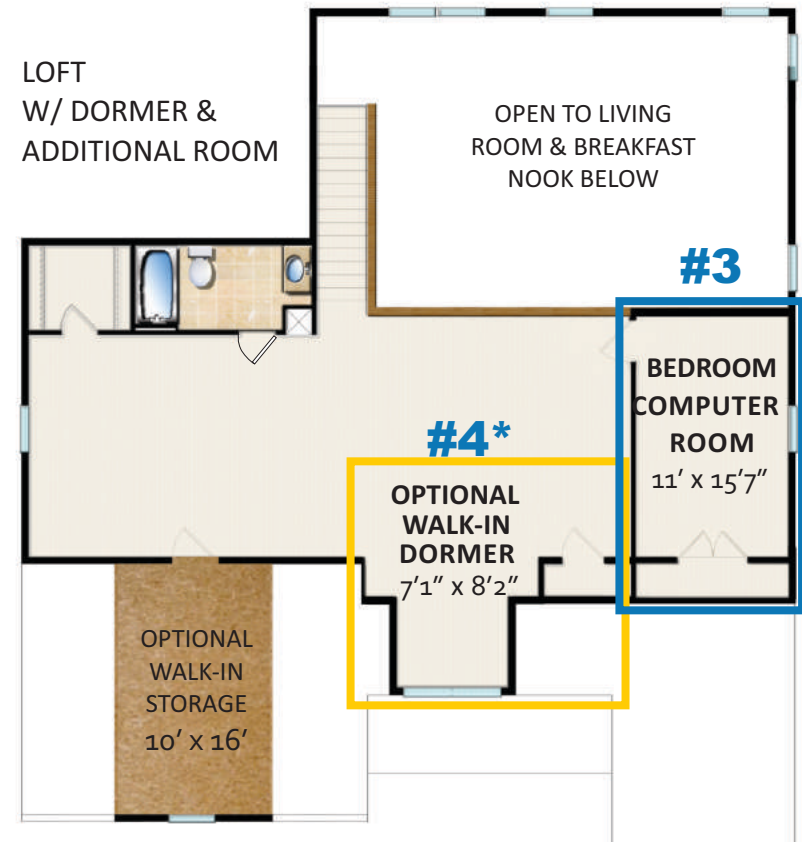
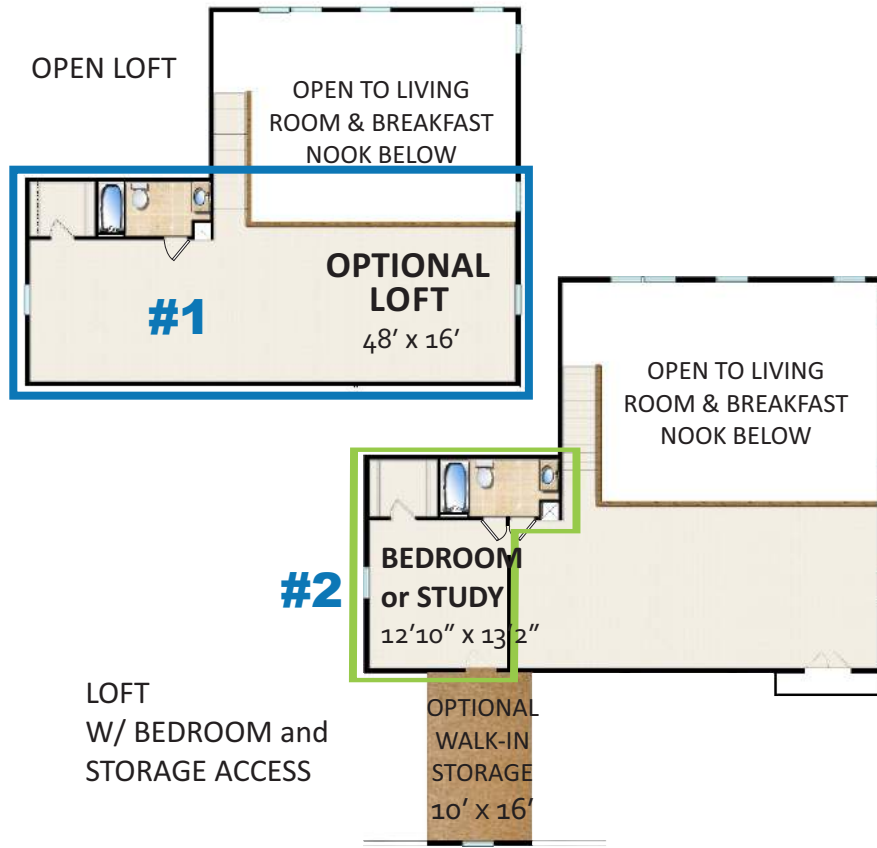
# Expand your Whatley by adding a second floor.

1. **Open Loft** - This large open space has an additional full bathroom included. Attic walk-in storage is available over the garage with a plywood floor.
2. **Finished Bedroom** - A bedroom or study, plus the walk-in storage access and an open loft.
3. **5th Bedroom or Computer Room** - A spacious room with a closet that can be used as an additional bedroom.
4. **Walk-in Dormer** - With double windows adds extra light and square footage. \*

\* Not all choices are available on all elevations. Speak with your selections coordinator for more specific information. Please note that a second floor is not available with a Hip Roof option.



Loft with dormer option



## SECOND FLOOR OPTIONS

## STANDARD KITCHEN



The Standard kitchen in the Whatley floor plan is loaded with impressive features, such as a full Energy Star® appliance package including a side-by-side refrigerator with ice and water in the door, a range/oven, microwave with integrated vent hood, dishwasher and disposal.



Our standard GE® appliance package



Standard Kitchen with optional island

## kitchen choices



## OPTIONAL GOURMET KITCHEN

The optional Gourmet Kitchen upgrade steps up the details to include a double wall oven and a 36" cook top instead of the slide-in range. A gas cooktop is an available option. The island is included with this configuration.

A range of appliance options are available, including the GE® Monogram line. Custom options are also available. Speak to your selections coordinator.

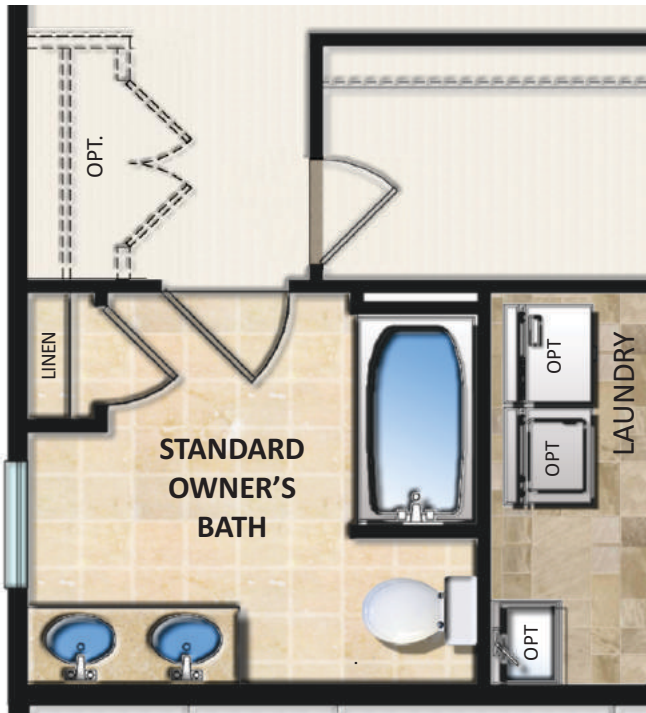
Choose the optional 4' Living Room extension or optional Morning Room for additional dining and entertaining space.



Gourmet Kitchen with stainless appliances

## KITCHEN OPTIONS

## STANDARD OWNER'S BATH CONFIGURATION



## OWNER'S SUITE BATH OPTIONS

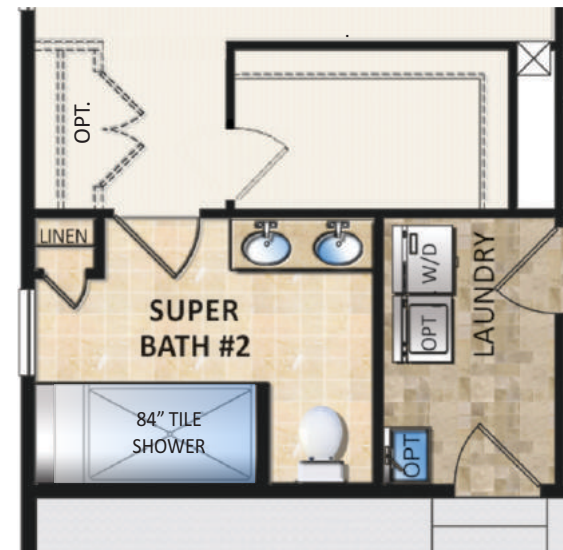
The Standard Bath pictured at left includes features like a 60" vanity with dual sinks, a combined tub/shower, toilet and linen closet. An optional walk-in shower or tiled-shower upgrade are also available. Numerous options to personalize your space with flooring, cabinetry and tile choices are available.



## SUPER BATH #1 OPTION



## SUPER BATH #2 OPTION



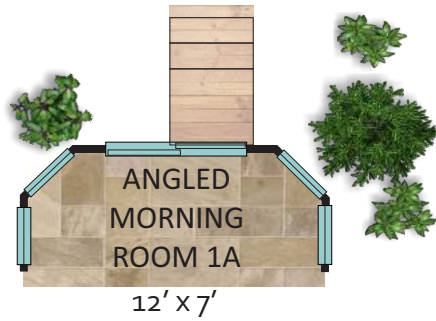
## TREAT YOURSELF TO A *super bath*

Upgrading your Owner's Suite bath to the **Super Bath #1** option includes a deep corner soaking tub with tile surround, plus a tile-surround shower.

A separate option with a large 84" tiled shower is also available as **Super Bath #2**.



## OWNER'S SUITE BATHROOM OPTIONS



## have a terrific morning

One of our most popular structural options, the Morning Room is available in multiple configurations, some with squared corners and others with angled corners, depending on your preferences and lot fit. All options include Insight Homes' high performance Super Low-E windows and doors which reduce heat transfer, making this a room you'll enjoy year-round.

You can opt for an accompanying composite or treated wood deck, or expand your living space outdoors with a choice of multiple affordably priced hardscape designs.

## MORNING ROOM OPTIONS

# Whatley Exterior Options



**Hampton**

*Shown with optional dormer, garage door and metal roof accents*



**Coastal**

*Shown with optional dormer, stone water table, garage door and metal roof accents*

**4**  
distinct  
exterior elevations  
are available



**Heritage**

*Shown with optional dormer, garage door and stone front*



**Traditional**



© 2018 by Insight Homes. All rights reserved.

16255 Sussex Highway  
Bridgeville, DE 19933  
302-337-0400

**STOP!** Be sure to look at the LATEST  
version of this information on our website:  
**aBetterHouse.com**



Plans are updated regularly. Please check the latest plans for most current specifications and features.

Updated 03/12/2018