

The Cartwright



Introducing the Cartwright

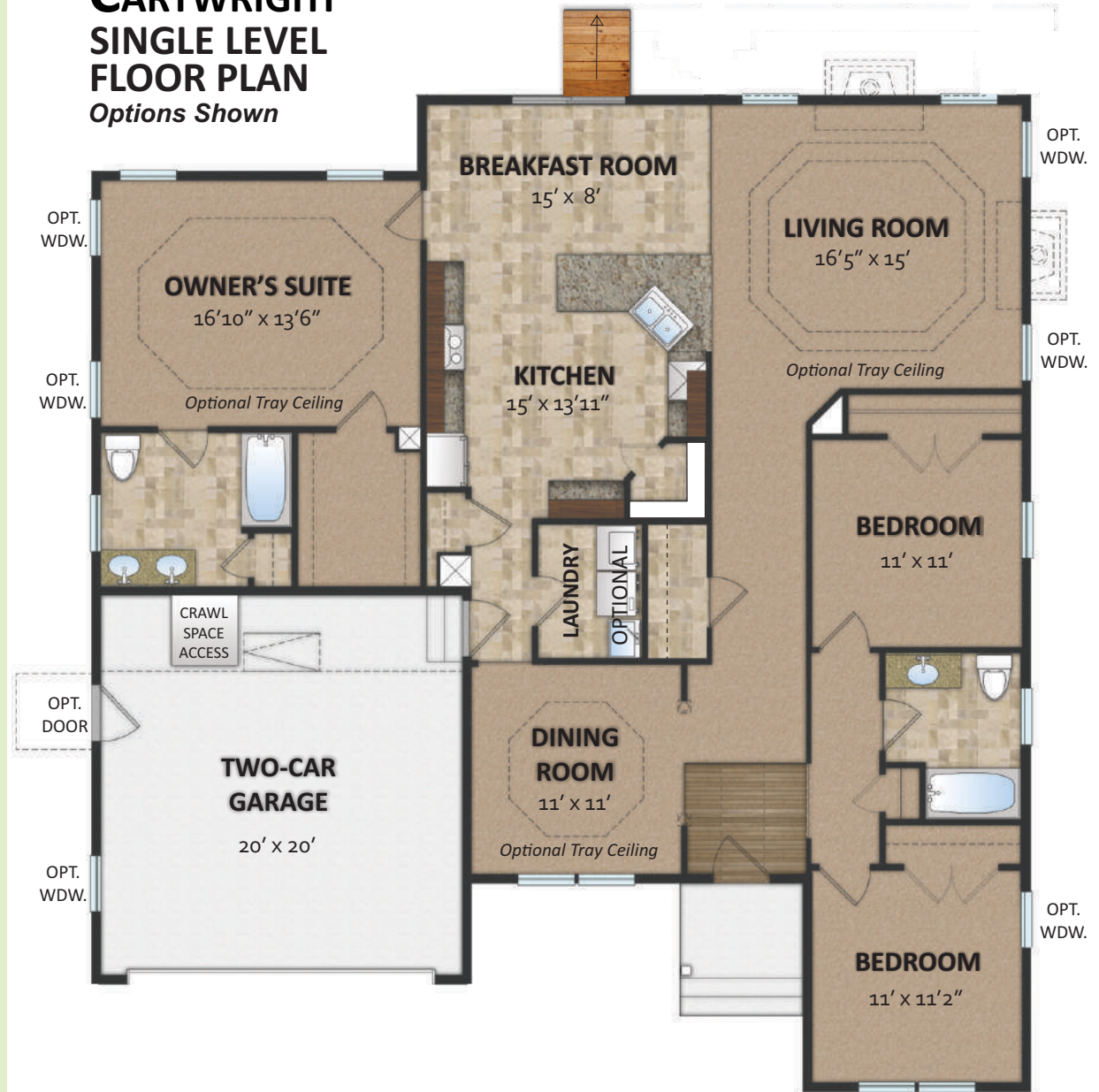
A floor plan that combines some of the best features of our other plans into one terrific package, **the Cartwright** is a new home from Insight Homes. With a starting square footage of over 1,800 and available options such as a powder bath and an amazing owner's suite, this plan has something to offer everyone.

The single level plan is pictured right. A large entry foyer opens up to a formal dining room or ahead to the spacious living room. An optional tray ceiling detail accentuates the bright and open space.



Cartwright with Hampton elevation and optional tray ceiling

CARTWRIGHT SINGLE LEVEL FLOOR PLAN Options Shown

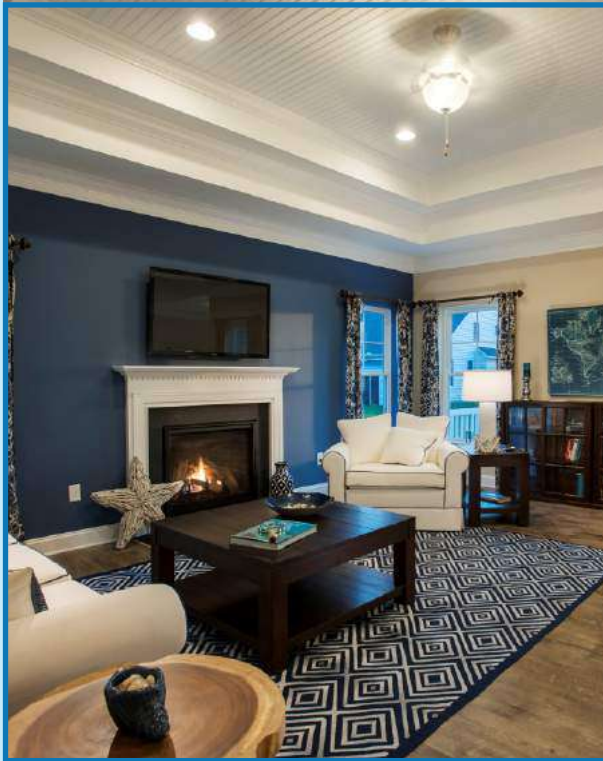


FIRST FLOOR PLAN

Add the Second Floor

Floor plan modifies to add stairs

The Cartwright is also available as a two-story plan. Choosing this option changes the configuration of the hallway and dining room to allow for a staircase and changes the location of the laundry room and optional powder bath. The plan at right also shows the optional kitchen island, and the dashed lines represent the size of certain structural options that are available.



The optional dual tray ceiling in the living room with decorative trim

CARTWRIGHT FIRST FLOOR PLAN w/ 2nd floor Options Shown



FIRST FLOOR PLAN with 2nd Floor Access

* All dimensions are approximate. Floor plans are artist's conception and may vary slightly from precise and most current blue prints and specifications. Plans and elevations may show options not included in the base price. Details subject to change without notice.

CARTWRIGHT

With Popular Options

You can extend the first floor to add more space in the Cartwright by adding a choice of structural options. From an owner's suite extension and sitting room, to a breakfast nook extension or the light-filled morning room, you have many options to get more light and more room. You also can choose to extend the front of the house, gaining space in the dining room.

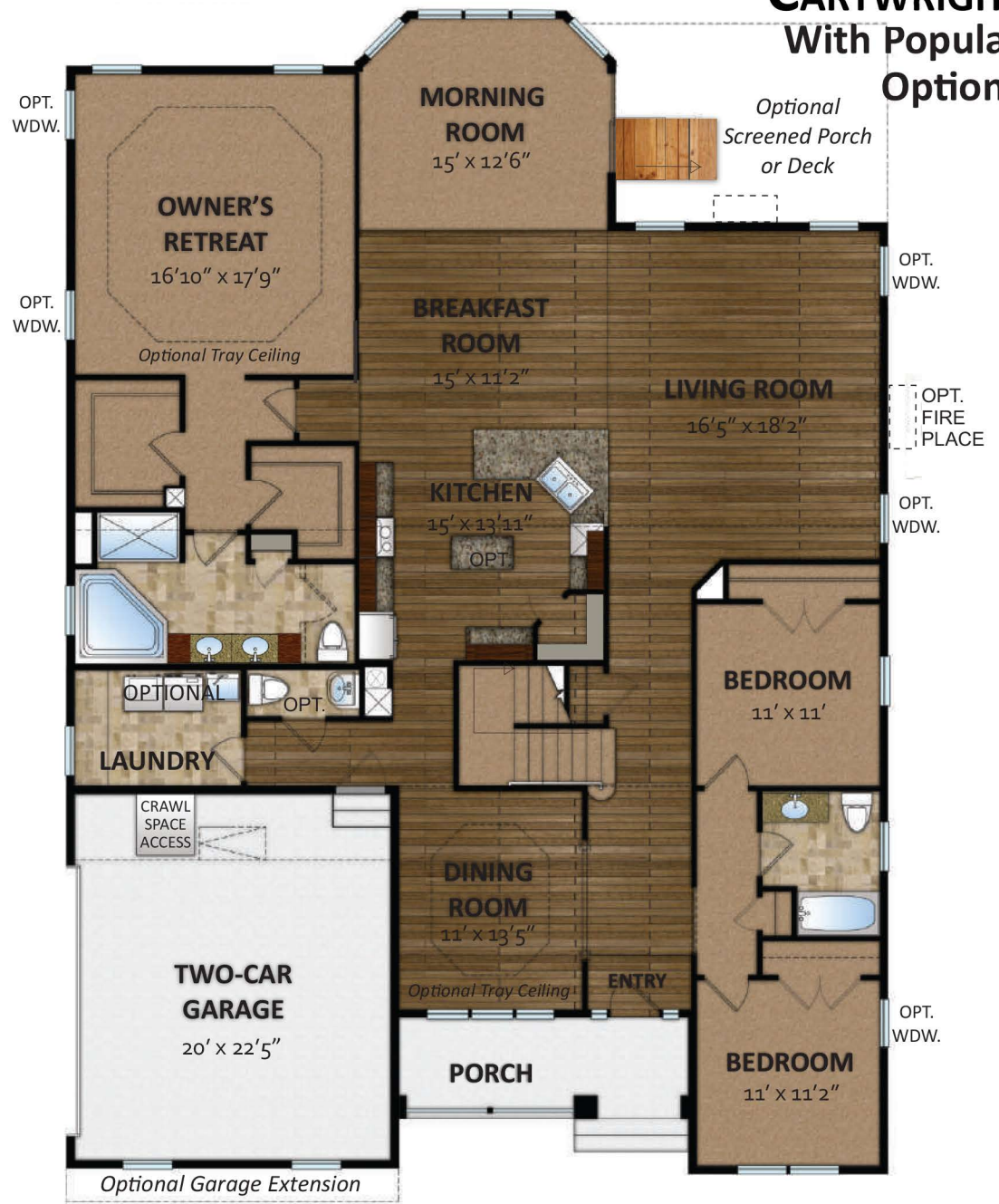
Pictured at right is the floor plan with the **owner's retreat**, **super bath #1 O.R.**, **morning room**, **half bath**, **extended dining room** and **front porch** options, along with a **side-entry garage**. Some available options are listed below.

- Owner's Suite extension
- Breakfast nook extension
- Living room extension
- Complete rear extension
- Morning room
- Dining room front extension



CARTWRIGHT

With Popular Options



FIRST FLOOR PLAN with Popular Options

CARTWRIGHT *second floor* LIVING SPACE OPTIONS



#1. Loft with bedroom plus bath - This option allows for a full bath, a large loft space to use for a variety of purposes and a guest bedroom.

#2. Loft plus two bedrooms plus bath - All of the space above plus a large bedroom with a triple-window overlooking the front of the home. This option is only available with our Heritage or Hampton elevations.



SECOND FLOOR PLAN OPTIONS

Standard Kitchen



We include a refrigerator, standard!



Our standard GE® Energy Star® appliance package

Cartwright Kitchens

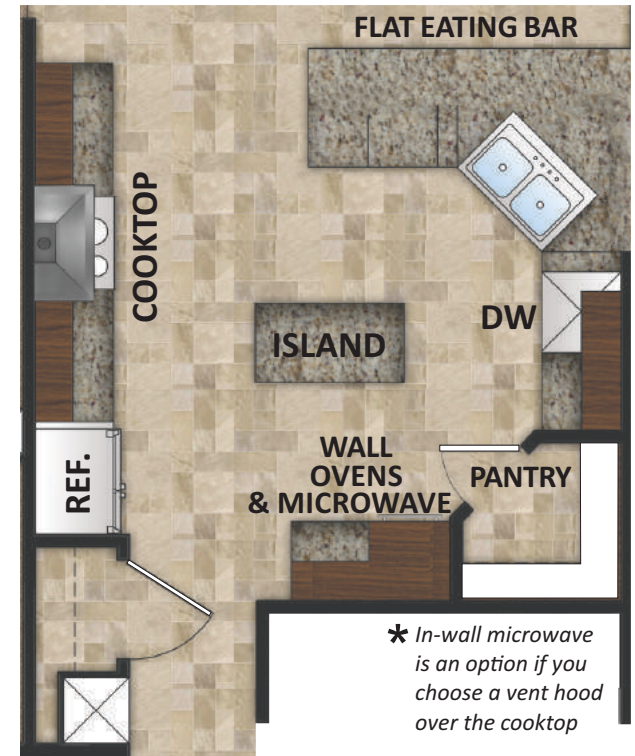
The standard kitchen in your Cartwright plan is anything but standard! Including premium features like granite counters and staggered upper cabinets with premium molding, this is already a terrific space you will be proud to use. An Insight kitchen comes with an Energy Star® appliance package including a side-by-side refrigerator with ice and water in the door, a flat top electric range, microwave/vent hood combination and a dishwasher.

Upgrading to our Gourmet Kitchen option gains you two wall ovens, substitutes the slide-in range for a ceramic cooktop and also gives you the option to have a microwave/vent hood or ornamental hood. The island is also standard with this option.

Multiple options are available including gas ranges, stainless steel finish, custom vent hoods, a prep sink in the center island, wine storage and much more.

You can also choose to carry the cabinetry into the breakfast nook; perfect for cookbooks, a television and more.

Gourmet Kitchen

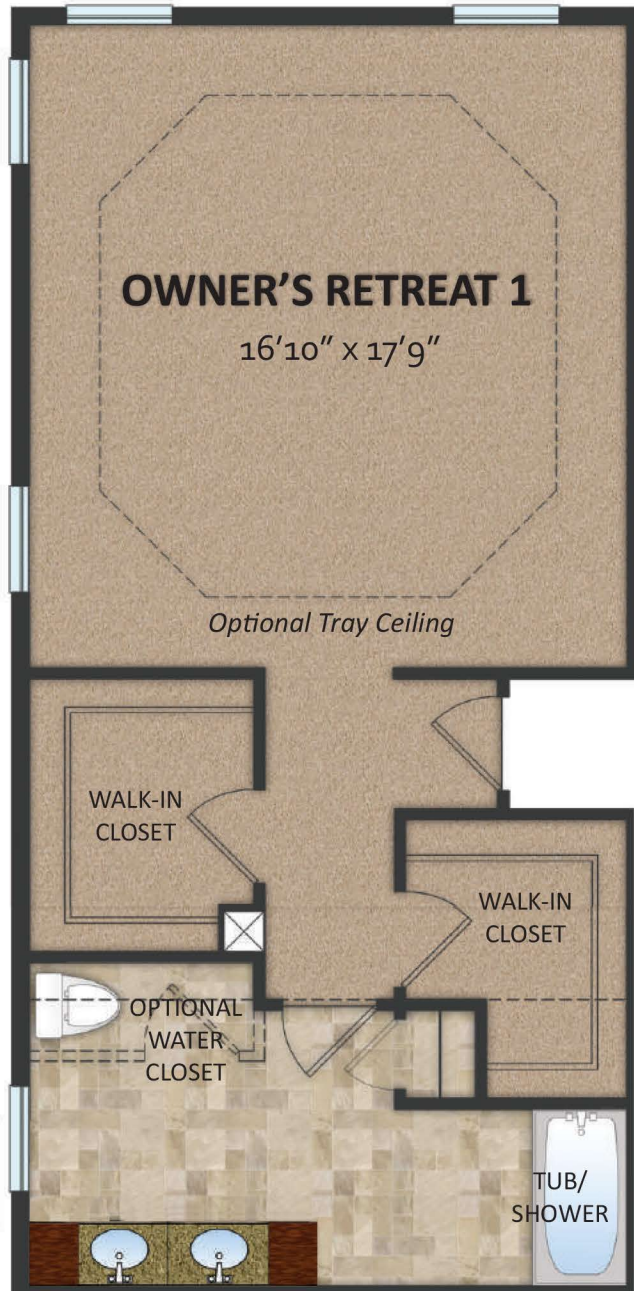


* In-wall microwave is an option if you choose a vent hood over the cooktop



Multiple upgraded appliance packages are available

KITCHEN OPTIONS

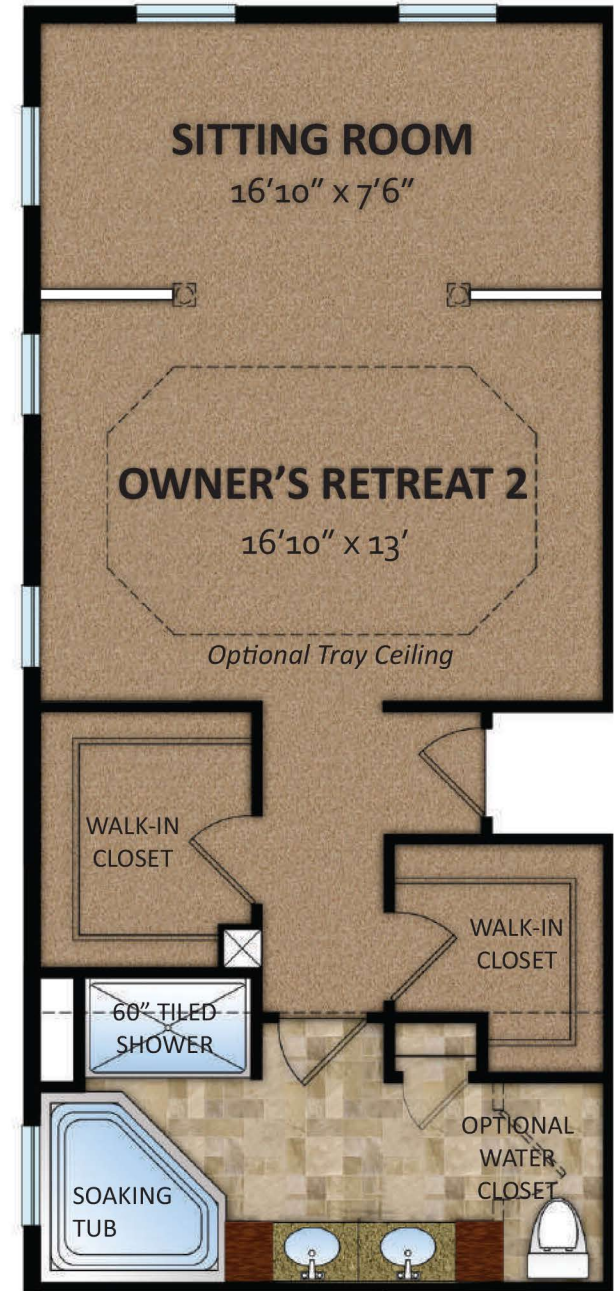


STANDARD BATH IN OWNER'S RETREAT

Escape into an *owner's retreat*

What if you took the concept of an owner's suite and kicked it up a notch?

You would have the **Owner's Retreat**, a new design and structural option from Insight Homes. With two spacious walk-in closets, a large bedroom and an option for a separate sitting room or office, this retreat is a perfect respite at the end of the day. The standard bath for this plan, pictured left, is spacious, and two Super Bath options are also available, one shown on the right. Speak to your Community Sales Manager for more information about these options.



UPGRADE SUPER BATH #1-OR

OPTIONAL OWNER'S RETREAT

Standard Owner's Suite



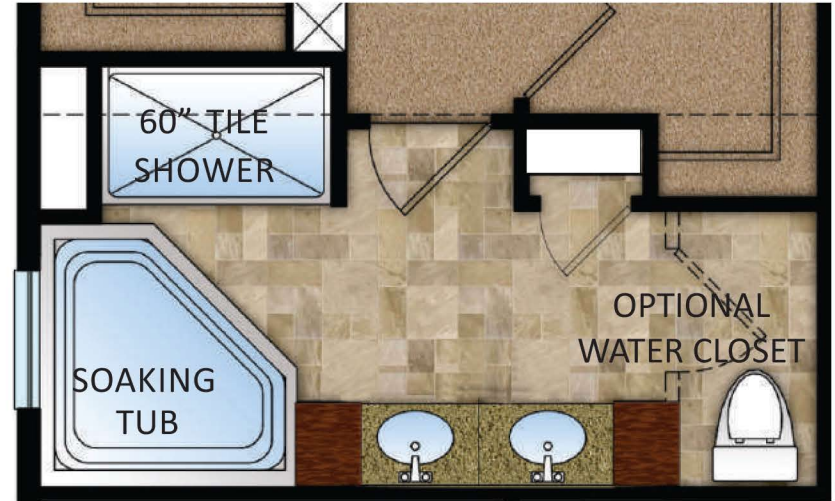
SUPER BATH #1



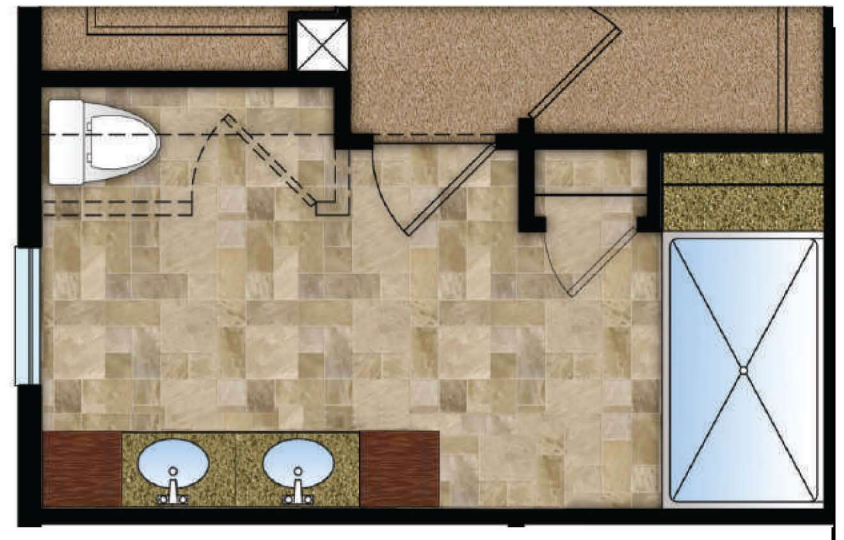
SUPER BATH #2

Available with standard owner's suite configuration only

Optional Owner's Retreat



SUPER BATH #1-OR



SUPER BATH #2-OR

Available with owner's retreat configurations only

OWNER'S SUITE BATH OPTIONS



add a Morning Room



Extend your Cartwright

Adding one of the optional morning rooms to your Cartwright plan can provide additional square feet of light and airy living space. Bathed in light and offering an optional tray ceiling, ceiling fan with light, and additional super low-E windows and a sliding glass door to an optional deck or patio. Check with your salesperson about available options for the lot you have chosen.

OPTIONAL MORNING ROOM

NOTES

NOTES

Cartwright Exterior Options



4 distinct exterior options are available



16255 Sussex Highway
Bridgeville, DE 19933
302-337-0400

© 2018 by Insight Homes. All rights reserved.

STOP! Be sure to look at the LATEST version of this information on our website: aBetterHouse.com



Plans are updated regularly. Please check the latest plans for most current specifications and features.

Updated 06/25/2019