

The Vandelay



Vandelay

WITH POPULAR OPTIONS

We offer a number of options so that you can personalize your Vandelay to work best for you and your family. The plan at right shows some of our most popular - an angled morning room, a deck, an owner's suite, breakfast nook and living room all extended by 4 feet, the front porch, and a popular owner's bath upgrade with a large walk-in shower.



FIRST FLOOR WITH POPULAR OPTIONS



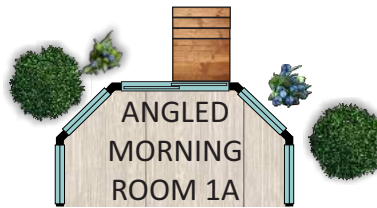
Approximately 12'11" x 15'



Approximately 12'11" x 15'



Approximately 12'11" x 12'



Approximately 12'11" x 7'

Start the day in your own **morning room**

We offer a variety of sizes and configurations for you to add a morning room to your Vandelay plan. Whichever size you choose, it will include Insight Homes' Super Low-E windows which reduce energy transference, making this a bright and comfortable space in all seasons.



VANDELAY SITTING ROOM

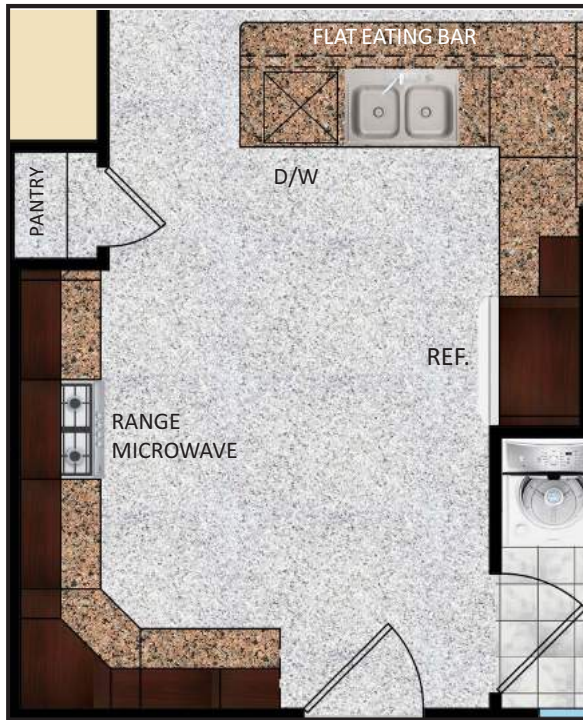


The Vandelay sitting room offers additional space off of the Owner's Suite with the flexibility to function as a separate office when the morning room is also selected.



MORNING AND SITTING ROOM OPTIONS

STANDARD KITCHEN



the heart of the home

The spacious and functional standard kitchen features Energy Star® appliances including a side-by-side refrigerator with ice and water in the door, smooth top ceramic range, dishwasher, microwave/vent hood, and disposal. An island is optional for additional prep space. You also get granite countertops and Made in America cabinetry and a storage pantry.

The gourmet kitchen incorporates a dual wall oven and cook top instead of the slide-in range and also includes the island.

Custom options are also available.

OPTIONAL GOURMET KITCHEN



STANDARD KITCHEN
(shown with optional island)



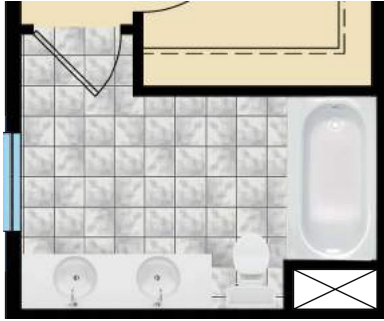
STANDARD KITCHEN
(shown with island & stainless appliances)



OPTIONAL GOURMET KITCHEN

KITCHEN OPTIONS

Owner's Suite Bath Options



Standard Owner's Bath

The standard Owner's Bath in the Vandelay comes with a 60" vanity with dual sinks, a fiberglass tub/shower insert and toilet.



With the 4' extension, you can opt to expand the bath and provide a linen closet and more space. You can choose to personalize either space with a choice of custom tile options, flooring and fixtures.

Step up the details to one of the two Super Baths. Vandelay **Super Bath #1**, at top right, provides a deep corner soaking tub and a separate 60" shower while adding space to the Owner's Suite. The **Super Bath #2** option includes a huge walk-in tiled shower and linen closet. Each option can be personalized with tile, trim and fixture choices.

super bath options



Super Bath #1



Super Bath #2

OWNER'S BATH OPTIONS



Vandelay Heritage
Shown with optional garage door



Vandelay Traditional

At right and on the cover is our **Hampton** elevation. Taking cues from classic beach homes, decorative trim and molding details set this style apart. Above left is the **Heritage** elevation. Heritage features tapered, Craftsman-inspired columns on the front porch and more prominent decorative trim. Above right is our **Traditional** elevation, with shutters and round decorative vents. Cedar impressions vinyl shakes are featured on one roof peak. Both Heritage and Hampton can also include a wraparound porch.



Vandelay Hampton

Shown with optional front door , garage door and garage side window

3
distinct
exterior options
are available

VANDELAY EXTERIOR OPTIONS



© 2018 by Insight Homes. All rights reserved.

16255 Sussex Highway
Bridgeville, DE 19933
302-337-0400

itsjustabetterhouse.com

Updated 02/12/2018