

# The George



We'd like you to meet

# George

Our popular George plan has a habit of just fitting in. Designed with a 40-foot width to slide into smaller lots, this compact profile belies a spacious interior. A grand entry hall sets the spacious tone that continues throughout the main living spaces. A front bedroom and full bath allow for a convenient guest suite, while a flex room can be configured as either a bedroom, dining room or study. The kitchen has a dramatic center island and plenty of storage. The owner's suite has a private bath with dual sink vanity and walk-in shower. Upstairs is a large loft overlooking the living space and an additional bedroom and full bath.

With many available options to customize the space, plus extensions and creative uses of space you are sure to find a George plan that works for you.



3 bedrooms  
2 baths  
Many options



## FIRST FLOOR PLAN

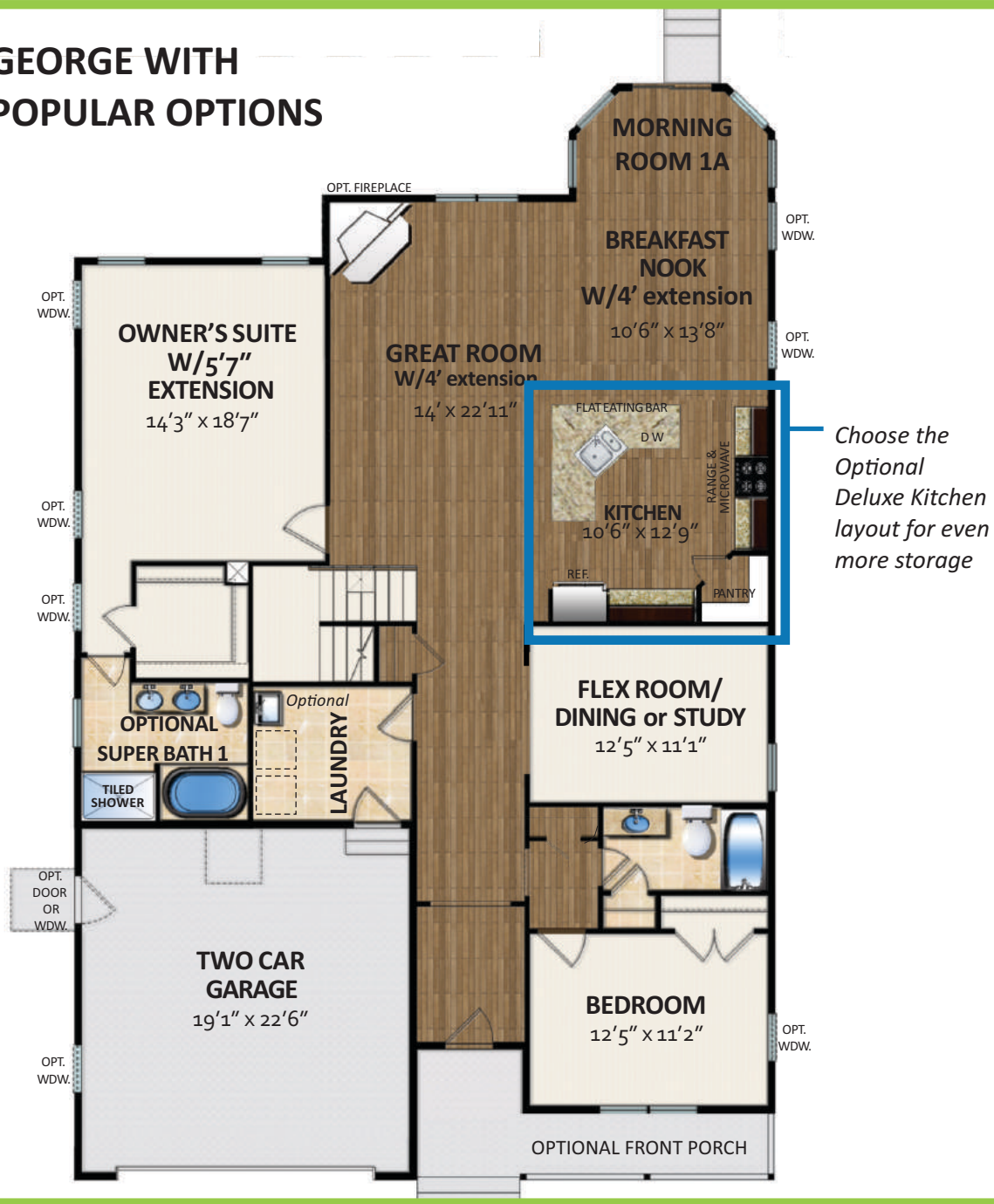
**George** can be adapted easily to accommodate your lifestyle and space needs.

Living space can be extended in the great room, breakfast nook and owner's suite. The Dining Room can be converted into a Flex Room or Study, with or without French Doors to separate it from the living space.

For the maximum number of bedrooms, the Dining Room can be converted into a bedroom and you can have two bedrooms in the upstairs loft area, for a total of five including the Owner's Suite.



## GEORGE WITH POPULAR OPTIONS



## FIRST FLOOR WITH OPTIONS

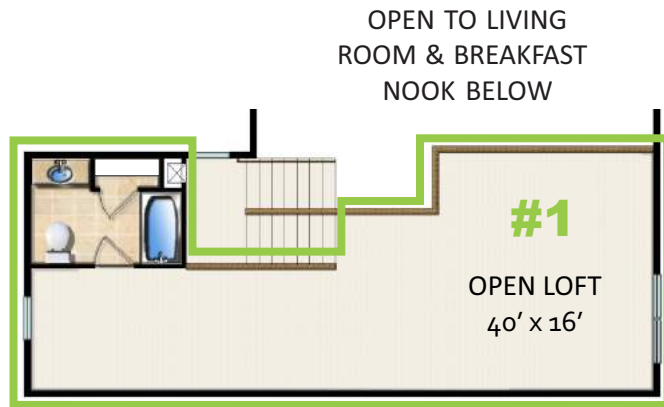
\* All dimensions are approximate. Floor plans are artist's conception and may vary slightly from precise and most current blue prints and specifications. Plans and elevations may show options not included in the base price. Details subject to change without notice.

# SECOND FLOOR LOFT

Three options are available with the George second floor loft:

- #1 - **Loft only**, 40 x 16' with an additional full bathroom
- #2 - **Dormer bedroom** with front windows for extra light and a large storage closet open to the loft area
- #3 - **Attic walk-in storage** over the garage with a plywood floor

Choosing the second floor opens the plan up to a vaulted ceiling and additional windows. Pictured with the optional breakfast nook bump, at right.



George Second Level  
Options Shown

## SECOND FLOOR OPTIONS

\* All dimensions are approximate. Floor plans are artist's conception and may vary slightly from precise and most current blue prints and specifications. Plans and elevations may show options not included in the base price. Details subject to change without notice.



Breakfast nook bump



## Optional Morning Rooms

One of our most popular structural options, the Morning Room is available in multiple configurations, some with squared corners and others with angled corners, depending on your preference and in some case, local codes. All options include Insight Homes' high performance Super Low-E windows and doors which reduce heat transfer, making this a room you'll enjoy year-round.

You can opt for a accompanying composite or treated wood deck, or expand your living space outdoors with a choice of multiple affordably priced hardscape designs.

# MORNING ROOM OPTIONS

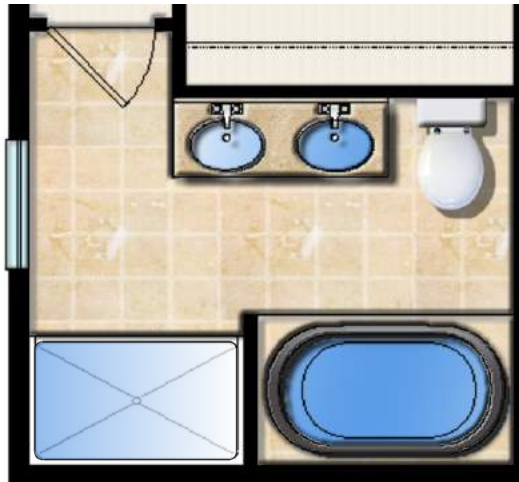
# George BATH options



The standard Owner's Bath in the George includes a 60 inch vanity with dual sinks, a fiberglass shower surround, linen closet and commode.



## Super Bath



The George has a few different options for a Super Bath upgrade, with the two most common detailed here. **Super Bath #1** includes a 60 inch vanity with dual sinks, a fiberglass corner soaking tub, a fiberglass shower with glass enclosure, and a commode. There are custom tile options and a choice of cabinetry finishes and fixtures.

**Super Bath #2** includes a 60 inch vanity with dual sinks, a 7 foot tile shower with seat, linen closet and commode. Many custom tile, cabinetry and fixture options allow you to further customize this space.



## OWNER'S BATH OPTIONS

NOTES



**George Heritage Elevation**

*Shown with optional dormer, garage door and stone front*



**George Traditional Elevation**

*Shown with optional dormer*

Pictured at right and on the cover of this guide is our **Hampton** elevation. Featuring coastal architectural accents, paneled columns and prominent decorative trim, this is our showcase elevation for the George. Pictured above is the **Heritage** elevation, with more Craftsman-inspired details like tapered columns. Above right is our **Traditional** elevation, featuring shutters and decorative vent detailing.



**George Hampton Elevation**

*Shown with optional dormer and upgraded garage door*

**3**  
distinct exterior  
designs to  
choose from

## GEORGE EXTERIOR OPTIONS



© 2018 by Insight Homes. All rights reserved.

16255 Sussex Highway  
Bridgeville, DE 19933  
302-337-0400

[itsjustabetterhouse.com](http://itsjustabetterhouse.com)

Details change frequently. Please consult the website for most up to date specifications.

Updated 01/29/2018

\* All dimensions are approximate. Floor plans are artist's conception and may vary slightly from precise and most current blue prints and specifications. Plans and elevations may show options not included in the base price. Details subject to change without notice.