

# Fridge Side by Sides/French



**Fridge #1**  
**Option Code: 88102**

**WRS315SDHM**  
36-inch Wide Side-by-Side  
Refrigerator - 24 cu. ft.



**Fridge #2**  
**Option Code: 88103**

**WRFF3536SZ**  
36-inch French Door  
Refrigerator w/ In-Door  
Water and Ice Maker -  
Family sized capacity 30  
cu. ft.



**New Fridge #4**  
**Option Code: 88105**

**WRSC5536RZ**  
**(Counter Depth)**  
36-inch Wide Counter  
Depth Side-by-Side  
Refrigerator - 21 cu. ft.



**Fridge #6**  
**Option Code: 88107**

**WRMF3636RZ**  
36-Inch Wide French  
Door Refrigerator - 25 cu.  
ft.



**Fridge #7**  
**Option Code: 88108**

**KRFF577KPS**  
26.8 cu. ft. 36-Inch Width  
Standard Depth French  
Door Refrigerator with  
Exterior Ice and Water  
and PrintShield™ finish

## Fridges - Top Freezer



**Option Code: 88098**

**WRT511SZDM**

33-inch Top Freezer  
Refrigerator - 21 cu. ft.

# Washer/ Dryer Options

Model: WHIRLPOOL



WTW4855HW (In White Only)

**Option Code: 88210**

Washer:

3.8 cu. ft. Top Load Washer with Soaking Cycles, 12 Cycles






WED4850HW (In White Only)

Dryer:

7.0 cu. ft. Top Load Electric Dryer with Auto Dry™ Drying System

# Washer/ Dryer Options

Model: WHIRLPOOL

		
<p><b>WFW5720RW</b> <b>Option Code: 88097</b></p> <p>Washer:</p> <p>4.5 cu. ft. Smart Front Load Energy Star Washer w/ FreshFlow Vent System</p>	<p><b>WED5720RW</b></p> <p>Dryer:</p> <p>7.4 cu. ft. Smart Front Load Energy Star Electric Dryer w/ Wrinkle Shield Option</p>	<p><b>WFP2715HW</b> <b>Option Code: 88096</b> (Option includes 2 Pedestals)</p> <p>Whirlpool Pedestal Storage</p>



# Stackable Washer/ Dryer Options

Model: WHIRLPOOL



**WET4124HW Option Code: 88095**

1.6 cu. ft., 120V/20A Electric  
Stacked Laundry Center w/6  
Wash cycles and Wrinkle Shield

*\*Only available on certain plans*

## Optional Lighting

### Esprea Package

*Fixtures per plan*



#### 2 STORY FOYER

**\*P3929-09** Brushed Nickel

15" dia., 24" ht.  
6 candelabra base,  
60w max.



P4623-09

#### DINING ROOM

**P4623-09** Brushed Nickel

27" dia., 23" ht.,  
Overall ht. w/chain 97", wire 12'.  
Five medium base lamps,  
each 100w max.

## Optional Lighting

### Espree Package

*Fixtures per plan*



P2143-1530K9

#### **POWDER, MSTR BATH X 2**

**P2143-1530K9** Polished Chrome

15-1/2" W., 4-3/4" ht.

Extends 4". H/CTR 2-3/8".

Two LED lamps,  
each 9w max.



P2144-1530K9

#### **SECONDARY BATHS**

**P2144-1530K9** Polished Chrome

24" W., 4-3/4" ht.

Extends 4". H/CTR 2-3/8".

Three LED lamps,  
each 9w max.

## Optional Lighting

### Esprea Package

*Fixtures per plan*



**1 STORY FOYER, BEDS, SHOWER/  
TUB, KITCHEN, PANTRY, HALLS,  
PORCH, GARAGE**

Model: P810042-028-30

- **Width:** 7 in.
- **Bulb Base:** Integrated LED



P6060-31

#### **GARAGE EXTERIOR**

**P6060-31** Textured Black

8" W., 11-1/8" ht.

Extends 8-7/8". H/CTR 2-3/16".

One medium base lamp,  
100w max.

## Optional Lighting Heritage Package

*Fixtures per plan*



P350153-009



P350153-031

### 1 STORY FOYER

**P350153-009** Brushed Nickel  
13-3/4" dia., 11-7/8" ht.,  
Overall ht. w/chain 50-1/2",  
wire 10'.  
Three candelabra base lamps,  
each 60w max.

### 1 STORY FOYER

**P350153-031** Matte Black  
13-3/4" dia., 11-7/8" ht.,  
Overall ht. w/chain 50-1/2",  
wire 10'.  
Three candelabra base lamps,  
each 60w max.

### 2 STORY FOYER

**P500239-009** Brushed Nickel  
12.87" dia., 17.12" ht.  
3 candelabra base, 60w max.



### 2 STORY FOYER

**P500239-031** Matte Black  
12.87" dia., 17.12" ht.  
3 candelabra base, 60w max.



## Optional Lighting Heritage Package

*Fixtures per plan*



**DINING ROOM**  
**P400209-009** Brushed Nickel  
24" dia., 19-3/4" ht.,  
Overall ht. w/chain 85-1/2", wire 15'.  
Five candelabra base lamps,  
each 60w max.



**DINING ROOM**  
**P400209-031** Matte Black  
24" dia., 19-3/4" ht.,  
Overall ht. w/chain 85-1/2", wire 15'.  
Five candelabra base lamps,  
each 60w max.



**BREAKFAST NOOK**  
**P4217-009** Brushed Nickel  
21.62" dia., 21.12" ht.  
5 candelabra base, 60w max.  
White linen fabric shade.



**BREAKFAST NOOK**  
**P400193-031** Matte Black  
21.62" dia., 21.12" ht.  
5 candelabra base, 60w max.  
Harvest linen fabric shade.

## Optional Lighting Heritage Package

*Fixtures per plan*



**POWDER, MSTR BATH X 2**  
**P300257-009** Brushed Nickel  
16" W., 8" ht.  
2 medium base, 60w max.



**POWDER, MSTR BATH X 2**  
**P300257-031** Matte Black  
16" W., 8" ht.  
2 medium base, 60w max.



**SECONDARY BATH**  
**P300258-009** Brushed Nickel  
24" W., 8" ht.  
3 medium base, 60w max.



**SECONDARY BATH**  
**P300258-031** Matte Black  
24" W., 8" ht.  
3 medium base, 60w max.

## Optional Lighting Heritage Package

*Fixtures per plan*



**1 STORY FOYER, BEDS, SHOWER/  
TUB, KITCHEN, PANTRY, HALLS,  
PORCH, GARAGE**

Model: P810042-028-30

- **Width:** 7 in.
- **Bulb Base:** Integrated LED



**P560174-031**

**GARAGE EXTERIOR**

**P560174-031** Textured Black  
5-1/2" W., 11-7/8" ht.  
Extends 6-1/2". H/CTR 3-1/8".  
One medium base lamp,  
60w max.



## Optional Lighting Autograph Package

*Fixtures per plan*

### 1 STORY FOYER



009 Brushed Nickel

031 Matte Black

177 Champagne Bronze

**P500507-009** Brushed Nickel  
15.75" dia., 15.75" ht.  
3 medium, 75w max.

**P500507-031** Black  
15.75" dia., 15.75" ht.  
3 medium, 75w max.

**P500507-177** Champagne Bronze  
15.75" dia., 15.75" ht.  
3 medium, 75w max.

### 2 STORY FOYER



## Optional Lighting Autograph Package

*Fixtures per plan*

### DINING ROOM



**P400442-177** Champagne Bronze  
26" dia., 18.87" ht.  
5 medium, 60w max.

**P400442-009** Brushed Nickel  
26" dia., 18.87" ht.  
5 medium, 60w max.

**P400442-031** Black  
26" dia., 18.87" ht.  
5 medium, 60w max.

- 009 Brushed Nickel
- 031 Matte Black
- 177 Champagne Bronze

### BREAKFAST NOOK



**P400440-009** Brushed Nickel  
18" dia., 17.87" ht.  
3 medium, 60w max.

**P400440-031** Black  
18" dia., 17.87" ht.  
3 medium, 60w max.

**P400440-177** Champagne Bronze  
18" dia., 17.87" ht.  
3 medium, 60w max.

## Optional Lighting

### Autograph Package

*Fixtures per plan*

#### **POWDER, MSTR BATH X 2**

**P300543-009** Brushed Nickel

**P300543-177** Champagne Bronze

**P300543-031** Matte Black

14" W., 9.6" ht., 6.5" D.

2 medium, 75w max.



#### **SECONDARY BATH**

**P300544-009** Brushed Nickel

**P300544-177** Champagne Bronze

**P300544-031** Matte Black

23.25" W., 9.6" ht., 6.5" D.

3 medium, 75w max.



## Optional Lighting Autograph Package

*Fixtures per plan*



**1 STORY FOYER, BEDS, SHOWER/  
TUB, KITCHEN, PANTRY, HALLS,  
PORCH, GARAGE**

Model: P810042-028-30

- **Width:** 7 in.
- **Bulb Base:** Integrated LED



P560022-031

**GARAGE EXTERIOR**  
**P560022-031** Textured Black  
7" W., 21-3/4" ht.  
Extends 8-3/4". H/CTR 8-3/8".  
Two candelabra base lamps,  
each 60w max.

## Optional Lighting Coastal Package

*Fixtures per plan*

### 1 STORY FOYER

**P350183-031** Matte Black  
15.62" dia., 14.37" ht.  
3 medium base, 60w max.



### 2 STORY FOYTER

**P500093-143** Graphite  
21.25" dia., 24" ht.  
3 medium base, 60w max.



## Optional Lighting Coastal Package

*Fixtures per plan*

### DINING ROOM

**P500308-031** Matte Black  
20.5" dia., 13.37" ht.  
4 medium base, 60w max.



### BREAKFAST NOOK

**\*P500023-143** Graphite  
21.62" dia., 18.25" ht.  
4 medium base, 75w max.





## Optional Lighting Coastal Package

*Fixtures per plan*



### **POWDER, MSTR BATH X 2**

**\*P300124-141** Galvanized  
15.5" W., 8.5" ht.  
2 medium base, 60w max.



### **POWDER, MSTR BATH X 2**

**P300124-143** Graphite  
15.5" W., 8.5" ht.  
2 medium base, 60w max.



### **SECONDARY BATH**

**P300125-141** Galvanized  
24" W., 8.5" ht.  
3 medium base, 60w max.



### **SECONDARY BATH**

**\*P300125-143** Graphite  
24" W., 8.5" ht.  
3 medium base, 60w max.

## Optional Lighting Coastal Package

*Fixtures per plan*



**1 STORY FOYER, BEDS, SHOWER/  
TUB, KITCHEN, PANTRY, HALLS,  
PORCH, GARAGE**

Model: P810042-028-30

- **Width:** 7 in.
- **Bulb Base:** Integrated LED



P5723-71

**GARAGE EXTERIOR**

**P5723-71** Gilded Iron

12" W., 12-3/8" ht.

Extends 13-1/8". H/CTR 6-7/8".

One medium base lamp,

100w max.



## Optional Lighting Modern Package

### *Fixtures per plan*

#### 1 STORY FOYER

**P350253-009** Brushed Nickel  
12.62" dia., 4.37" ht.  
2 medium base LED, 15w max.



#### 1 STORY FOYER

**P350253-31M** Matte Black  
12.62" dia., 4.37" ht.  
2 medium base LED, 15w max.



P500284-009



#### 2 STORY FOYER

**P500284-009** Brushed Nickel  
13-1/2" W., 20-1/2" ht.,  
Overall ht. w/stem 77", wire 10'.  
Extends 13-1/2".  
Two candelabra base lamps,  
each 60w max.

P500284-031



#### 2 STORY FOYER

**P500284-031** Matte Black  
13-1/2" W., 20-1/2" ht.,  
Overall ht. w/stem 77", wire 10'.  
Extends 13-1/2".  
Two candelabra base lamps,  
each 60w max.

## Optional Lighting Modern Package

*Fixtures per plan*

### DINING ROOM

**P400294-009** Brushed Nickel  
30" dia., 10.37" ht.  
6 candelabra base, 60w max.



### DINING ROOM

**P400294-31M** Matte Black  
30" dia., 10.37" ht.  
6 candelabra base, 60w max.



P4319-09



### BREAKFAST NOOK

**P4319-09** Brushed Nickel  
21" dia., 19-5/8" ht.,  
Overall ht. w/chain 95", wire 15'.  
Five medium base lamps,  
each 100w max.

P4319-31



### BREAKFAST NOOK

**P4319-31** Textured Black

**BREAKFAST NOOK**  
21" dia., 20-1/8" ht.,  
Overall ht. w/stem 95", wire 15'.  
Five medium base lamps,  
each 100w max.

## Optional Lighting Modern Package

*Fixtures per plan*



POWDER, MSTR BATH X2

**\*P300150-009-30** Brushed Nickel  
22.25" W., 4.75" ht., 3.62" D.  
36w integrated LED, 3000K,  
90 CRI, 1942 delivered lumens.



SECONDARY BATHS

**P300151-009-30** Brushed Nickel  
32.37" W., 4.75" ht., 3.62" D.  
53w integrated LED, 3000K,  
90 CRI, 2768 delivered lumens.

POWDER, MSTR BATH X2

**P300150-031-30** Matte Black  
22.25" W., 4.75" ht., 3.62" D.  
36w integrated LED, 3000K,  
90 CRI, 1942 delivered lumens.



SECONDARY BATHS

**\*P300151-031-30** Matte Black  
32.37" W., 4.75" ht., 3.62" D.  
53w integrated LED, 3000K,  
90 CRI, 2768 delivered lumens.

## Optional Lighting Modern Package

*Fixtures per plan*



**1 STORY FOYER, BEDS, SHOWER/  
TUB, KITCHEN, PANTRY, HALLS,  
PORCH, GARAGE**

Model: P810042-028-30

- **Width:** 7 in.
- **Bulb Base:** Integrated LED



P5948-31

**GARAGE EXTERIOR**

**P5948-31** Textured Black

6" W., 13-5/8" ht.

Extends 6-1/4". H/CTR 5-1/8".

One medium base lamp,  
100w max.

## Optional Pendant Lights

### Espre

*Over kitchen island per plan*



**P500192-009** Brushed Nickel  
6-1/4" L., 6-1/4" dia., 14" ht.,  
Overall ht. w/stem 80", wire 10'.  
One medium base lamp,  
100w max.



**P500192-020** Antique Bronze  
6-1/4" L., 6-1/4" dia., 14" ht.,  
Overall ht. w/stem 80", wire 10'.  
One medium base lamp,  
100w max.

## Optional Pendant Lights

### Heritage

*Over kitchen island per plan*

**P500365-028** Satin White  
18" dia., 16" ht.  
1 medium base,  
60w max.



**P500365-31M** Matte Black  
18" dia., 16" ht.  
1 medium base,  
60w max.



**P500365-186** Burnished Nickel  
18" dia., 16" ht.  
1 medium base,  
60w max.



## Optional Pendant Lights

### Autograph

*Over kitchen island per plan*



**P500135-009** Brushed Nickel  
13" dia., 13" ht.,  
Overall ht. w/chain 79", wire 10'.  
One medium base lamp,  
60w max.



**P500135-143** Graphite  
13" dia., 13" ht.,  
Overall ht. w/chain 79", wire 10'.  
One medium base lamp,  
60w max.

## Optional Pendant Lights

### Coastal

*Over kitchen island per plan*



**P500379-030** White  
15.75" dia., 8.62" ht.  
1 medium base, 100w max.



**P500379-009** Brushed Nickel  
15.75" dia., 8.62" ht.  
1 medium base, 100w max.



**P500379-191** Brushed Gold  
15.75" dia., 8.62" ht.  
1 medium base, 100w max.



**P500379-31M** Matte Black  
15.75" dia., 8.62" ht.  
1 medium base, 100w max.



## Optional Pendant Lights

### Modern

*Over kitchen island per plan*



**P500148-009-30** Brushed Nickel  
11.62" dia., 13.5" ht.  
17w LED module, 3000K,  
90 CRI, 1276 source lumens.



**P500148-031-30** Matte Black  
11.62" dia., 13.5" ht.  
17w LED module, 3000K,  
90 CRI, 1276 source lumens.



**P500148-109-30** Brushed Bronze  
11.62" dia., 13.5" ht.  
17w LED module, 3000K,  
90 CRI, 1276 source lumens.

## Optional Pendant Lights

### Vintage

*Over kitchen island per plan*



**P500325-163** Vintage Brass  
12.25" dia., 12.75" ht.  
1 medium base, 100w max.



**P500325-009** Brushed Nickel  
12.25" dia., 12.75" ht.  
1 medium base, 100w max.



**P500325-031** Matte Black  
12.25" dia., 12.75" ht.  
1 medium base, 100w max.



**P500325-104** Polished Nickel  
12.25" dia., 12.75" ht.  
1 medium base, 100w max.

## Optional Pendant Lights

### Copeland

*Over kitchen island per plan*

**P500409-009** Brushed Nickel  
10" dia., 11.5" ht.  
1 medium base, 75w max.



**P500409-31M** Matte Black  
10" dia., 11.5" ht.  
1 medium base, 75w max.



**P500409-191** Brushed Gold  
10" dia., 11.5" ht.  
1 medium base, 75w max.



## Optional Pendant Lights

### Markor

*Over kitchen island per plan*



-031 Matte Black



-163 Vintage Brass



-009 Brushed Nickel

**P500387-193** Black Parchment  
18.12" dia., 10" ht.  
3 medium base, 60w max.



**P500387-194** Ecru Linen  
18.12" dia., 10" ht.  
3 medium base, 60w max.



**P500387-195** White Linen  
18.12" dia., 10" ht.  
3 medium base, 60w max.



## Optional Indoor Ceiling Fans

### Good

*Family Room & Owner's Bedroom only  
are prewired for fan, no fans come included*



P2599-09

#### **BUILDER COLLECTION**

**P2599-09** Brushed Nickel  
52" dia., 19-1/8" ht.  
Two medium base lamps,  
each 8.5w max.

**Downrod Option #55328 required for  
Clark 2020 Owners Suite, Pinehurst  
Family Room and Turlington Family  
Room Fans.**



P2599-129

#### **BUILDER**

**P2599-129** Architectural Bronze  
52" dia., 19-1/8" ht.  
Two medium base lamps,  
each 8.5w max.

**Downrod Option #55328 required for  
Clark 2020 Owners Suite, Pinehurst  
Family Room and Turlington Family  
Room Fans.**



P2599-30

#### **BUILDER**

**P2599-30** White  
52" dia., 19-1/8" ht.  
Two medium base lamps,  
each 8.5w max.

**Downrod Option #55328 required for  
Clark 2020 Owners Suite, Pinehurst  
Family Room and Turlington Family  
Room Fans.**

## Optional Indoor Ceiling Fans

### Better

*Family Room & Owner's Bedroom only  
are prewired for fan, no fans come included*



**P2582-14330K Graphite**

54" dia., 16" ht.

Downrod Option #55328 required for  
Clark 2020 Owners Suite, Pinehurst  
Family Room and Turlington Family  
Room Fans.



**P2582-0930K Brushed Nickel**

54" dia., 16" ht.

Downrod Option #55328 required for  
Clark 2020 Owners Suite, Pinehurst  
Family Room and Turlington Family  
Room Fans.



**P2582-2030K Antique Bronze**

54" dia., 16" ht.

Downrod Option #55328 required for  
Clark 2020 Owners Suite, Pinehurst  
Family Room and Turlington Family  
Room Fans.

## Optional Indoor Ceiling Fans

### Coastal

*Family Room & Owner's Bedroom only  
are prewired for fan, no fans come included*



P2539-0930K

**SIGNATURE PLUS II**

**P2539-0930K** Brushed Nickel  
54" dia., 15-1/4" ht.  
One LED lamp,  
17w max.



P2539-3030K

**SIGNATURE PLUS II**

**P2539-3030K** White  
54" dia., 15-1/4" ht.  
One LED lamp,  
17w max.

## Optional Indoor Ceiling Fans

### Modern

*Family Room & Owner's Bedroom only  
are prewired for fan, no fans come included*



P2550-0930K



P2550-3130K

#### **VAST COLLECTION**

**P2550-0930K** Brushed Nickel

72" dia., 16-3/4" ht.

One LED lamp,  
18w max.

**Downrod Option #55328 required for  
Clark 2020 Owners Suite, Pinehurst  
Family Room and Turlington Family  
Room Fans.**

#### **VAST COLLECTION**

**P2550-3130K** Black

72" L., 72" dia., 16-3/4" ht.

One LED lamp,  
18w max.

**Downrod Option #55328 required for  
Clark 2020 Owners Suite, Pinehurst  
Family Room and Turlington Family  
Room Fans.**



## Optional Outdoor Ceiling Fans

### Montague

*Covered porch option prewired for fan,  
fan does not come included*



P2564-2030K

#### **MONTAGUE COLLECTION**

**P2564-2030K** Antique Bronze  
60" dia., 17-5/8" ht.  
One LED lamp,  
18w max.



P2564-3030K

#### **MONTAGUE COLLECTION**

**P2564-3030K** White  
60" dia., 17-5/8" ht.  
One LED lamp,  
18w max.



P2564-8030K

#### **MONTAGUE COLLECTION**

**P2564-8030K** Forged Black  
60" dia., 17-5/8" ht.  
One LED lamp,  
18w max.

## Optional Outdoor Ceiling Fans

### Albin

*Covered porch option prewired for fan,  
fan does not come included*



P250036-031-30

**ALBIN COLLECTION**  
**P250036-031-30** Black  
54" dia., 15-9/16" ht.  
One Module lamp,  
24w max.



P250036-129-30

**ALBIN COLLECTION**  
**P250036-129-30** Architectural  
Bronze  
54" dia., 15-9/16" ht.  
One Module lamp,  
24w max.

## Optional Wow Lights

### Esprea Series

*Family Room or Owner's Bedroom*



P3928-09

#### Family Room

**P3928-09** Brushed Nickel  
10" dia., 16" ht.,  
Overall ht. w/chain 61", wire 8'.  
Three candelabra base lamps,  
each 60w max.



P3928-20

#### Family Room

**P3928-20** Antique Bronze  
10" dia., 16" ht.,  
Overall ht. w/chain 61", wire 8'.  
Three candelabra base lamps,  
each 60w max.



P3841-104

#### Owner's Bedroom

**P3841-104** Polished Nickel  
22" dia., 24-3/8" ht.,  
Overall ht. w/chain 99-1/2", wire 15'.  
Five candelabra base lamps,  
each 60w max.



P3841-20

#### Owner's Bedroom

**P3841-20** Antique Bronze  
22" dia., 24-3/8" ht.,  
Overall ht. w/chain 99-1/2", wire 15'.  
Five candelabra base lamps,  
each 60w max.

## Optional Wow Lights

### Heritage Series

*Family Room or Owner's Bedroom*



#### Family Room

**P500357-009** Brushed Nickel  
22" dia., 30" ht.  
Overall ht. w/chain 105", wire 10'.  
Three medium base lamps,  
each 60w max.



#### Family Room

**P500357-31M** Matte Black  
22" dia., 30" ht.  
Overall ht. w/chain 105", wire 10'.  
Three medium base lamps,  
each 60w max.



P5321-134

#### Owner's Bedroom

**P5321-134** Silver Ridge  
22-1/4" dia., 23-7/8" ht.,  
Overall ht. w/chain 99", wire 10'.  
Five candelabra base lamps,  
each 60w max.



P5321-20

#### Owner's Bedroom

**P5321-20** Antique Bronze  
22-1/4" dia., 23-7/8" ht.,  
Overall ht. w/chain 99", wire 10'.  
Five candelabra base lamps,  
each 60w max.

## Optional Wow Lights

### Autograph Series

*Family Room or Owner's Bedroom*



#### Family Room

**P500302-009** Brushed Nickel

15" dia., 23" ht.

4 candelabra base, 60w max.



#### Family Room

**P500302-031** Matte Black

15" dia., 23" ht.

4 candelabra base, 60w max.



#### Owner's Bedroom

**P350110-009** Brushed Nickel

21.75" dia., 11" ht.

3 medium base, 60w max.

Summer linen fabric shade.

## Optional Wow Lights

### Coastal Series

*Family Room or Owner's Bedroom*



#### Family Room

**P500088-009** Brushed Nickel  
14" sq., 25" ht.,  
Overall ht. w/chain 99", wire 15'.  
Four candelabra base lamps,  
each 60w max.



#### Owner's Bedroom

**P400081-009** Brushed Nickel  
22" dia., 24-3/4" ht.,  
Overall ht. w/chain 111-1/2", wire 15'.  
Six candelabra base lamps,  
each 60w max.



## Optional Wow Lights

### Modern Series

*Family Room or Owner's Bedroom*



#### Family Room

**P500305-015** Polished Chrome  
20" dia., 30" ht.  
Overall ht. w/stem 99", wire 15'.  
Four medium base lamps,  
each 75w max.



#### Family Room

**P500305-031** Matte Black  
20" dia., 30" ht.  
Overall ht. w/stem 99", wire 15'.  
Four medium base lamps,  
each 75w max.

#### Owner's Bedroom

**P350135-009-30** Brushed Nickel  
13" dia., 6" ht.  
17w LED module, 3000K,  
90 CRI, 1452 source lumens.  
Summer linen fabric shade.



#### Owner's Bedroom

**P350135-143-30** Graphite  
13" dia., 6" ht.  
17w LED module, 3000K,  
90 CRI, 1452 source lumens.  
Summer linen fabric shade.



## Floor Tile

### Cabris (Cannes) 12x12

Level 1

\*Tile floor available upgrade in  
baths & laundry



CS20 Buff



CS22 Fair



CS23 Iron



## Floor Tile

### Artiquity (Advantage) 12x12

*Level 2*



**AQ01 Portrait White**



**AQ03 Renoir Grey**



**AQ02 Mural Taupe**

## Floor Tile

### Balans 12x12

*Level 2*



**BA30 White**

## Floor Tile

### Costar 12x12

*Level 2*



**CT76 Calacatta Empire**

## Floor Tile

### Epitomize (Advantage) 12x12

*Level 2*



**EP20 Aria White**



**EP21 Percussion Taupe**

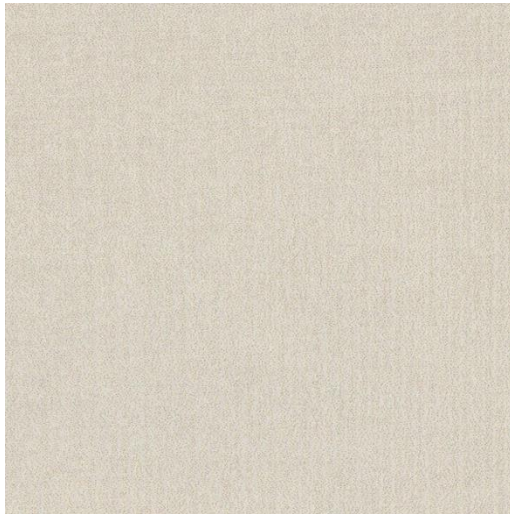


**EP22 Trumpet Grey**

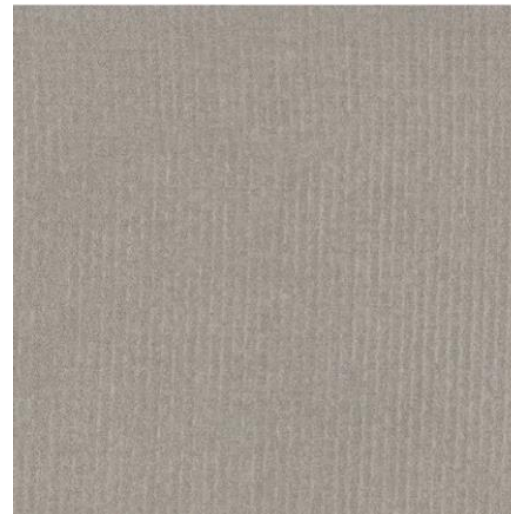
## Floor Tile

### Koncrete 12x12

*Level 2*



KC01 White



KC04 Gray

## Floor Tile

### Resilience 12x12

*Level 2*



**RL20 Vitality White**



**RL21 Dynamic Beige**



**RL23 Stamina Grey**

## Floor Tile

### Archaia 12x24

Level 3



AR40 Relic White



AR41 Artifact Beige



AR42 Province Grey



AR43 Atlas Grey



## Floor Tile

### Artiquity (Advantage) 12x24

Level 3



AQ01 Portrait White



AQ02 Mural Taupe



AQ03 Renoir Grey



## Floor Tile

### Balans 12x24

*Level 3*



**BA30 White**

## Floor Tile

### Bryne 12x24

*Level 3*



**BR30 Coastline**



**BR31 Mist**

## Floor Tile

### Cabris 12x24

*Level 3*



**CS22 Fair**



**CS20 Buff**



**CS23 Iron**

## Floor Tile

### Costar 12x24

Level 3



**CT75 Calacatta Sky**



**CT76 Calacatta Empire**

## Floor Tile

### Elect 12x24

*Level 3*



**EL31 Beige**



**EL30 White**



**EL32 Grey**

## Floor Tile

### Epitomize (Advantage) 12x24

*Level 3*



**EP20 Aria White**



**EP21 Percussion Taupe**



**EP22 Trumpet Grey**

## Floor Tile

### Koncrete 12x24

*Level 3*



KC01 White



KC04 Grey



## Floor Tile

### Memoir 12x12

*Level 3*



ME20 Petal Gray



ME21 Petal Black



ME24 Crystal Grey



ME25 Crystal Black



## Floor Tile

### Memoir 12x12

*Level 3*



**ME26 Jewel Grey**



**ME27 Jewel Black**



**ME28 Cosmo Grey**



**ME29 Cosmo Blue**

## Floor Tile

### Resilience 12x24

*Level 3*



**RL21 Dynamic Beige**



**RL20 Vitality White**



**RL23 Stamina Gray**

## Floor Tile

### Stone Theory 12x24

Level 3



**ST87 Metamorphic**



**ST86 Notion**

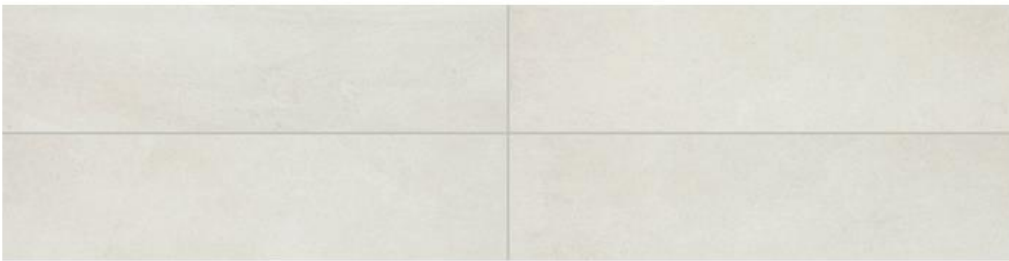


**ST88 Formation**

## Floor Tile

### Wanderwise 6x24

*Level 3*



SWAN WW01



DRIFT WW02

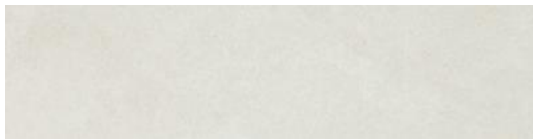


ROAM WW03

## Floor Tile

### Wanderwise 6x24 & 12x24

Level 3



WW01 Swan



WW02 Drift



WW03 Roam



WW01 Swan



WW02 Drift



WW03 Roam

## Floor Tile

### Wanderwise 12x24

*Level 3*



SWAN WW01



DRIFT WW02



ROAM WW03



## Floor Tile

### Florentine 12x24 - natte

Level 4



**FL08 Argento**



**FL06 Carrara**



**FL09 Niciolla**

## Floor Tile

### Linden Point 12x24

*Level 4*



**LP19 Bianco**



**LP20 Beige**



**LP21 Grigio**



## Floor Tile

### Perpetuo - Matte 12x24

Level 4



**PT20**  
Timeless  
White



**PT21**  
Brilliant  
White



**PT22**  
Elegant  
Beige



**PT23**  
Eternal  
Grey



**PT24**  
Infinite  
Black

## Floor Tile

### Sleigh Creek 6" x 36"

Level 4



SK30 Cabriolet



SK31 Stagecoach



SK33 Wagon

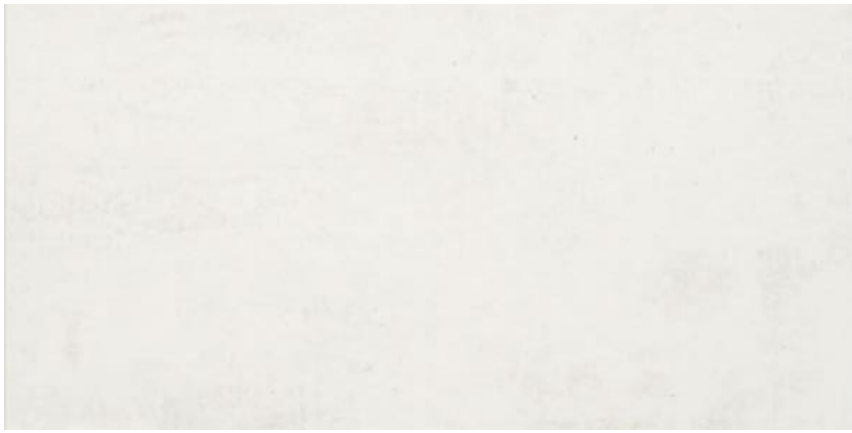


SK34 Chariot

## Floor Tile

### Stella Vista (Advantage) 12x24

Level 4



**SV16 White Canvas**



**SV17 Golden Sand**



**SV18 Cement Grey**

## Floor Tile

Volume 1.0 12x12

*Level 4*



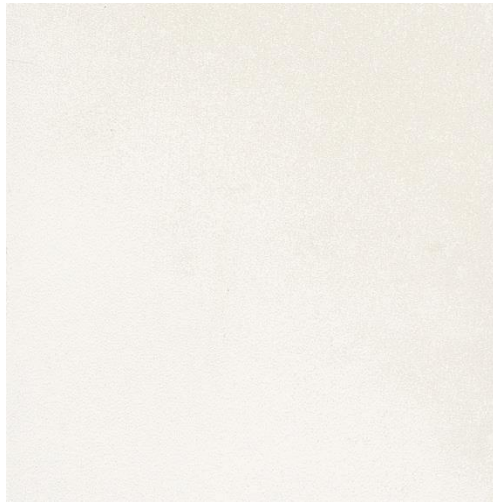
**VL71 Degrees Silver**



**VL72 Pebble**



**VL73 Stereo Grey**



**VL75 Sonic White**



**VL79 Electric Moss**

## Floor Tile

### Fabric Art- Modern Linear 12x24

Level 5



MODERN LINEAR WHITE ML60



MODERN LINEAR MEDIUM GRAY ML63



MODERN LINEAR BEIGE ML61



MODERN LINEAR DARK GRAY ML64



MODERN LINEAR TAUPE ML62



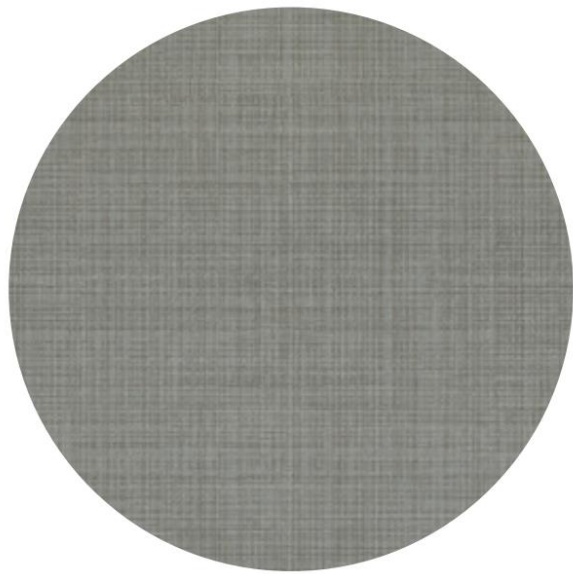
MODERN LINEAR MIDNIGHT BLUE ML65



## Floor Tile

### Fabric Art- Modern Textile 12x24

Level 5



MODERN TEXTILE WHITE MT50



MODERN TEXTILE BEIGE MT51



MODERN TEXTILE TAUPE MT52



MODERN TEXTILE MEDIUM GRAY MT53



MODERN TEXTILE DARK GRAY MT54



MODERN TEXTILE MIDNIGHT BLUE MT55

## Floor Tile

### Famed 12x24 - Polished

Level 5



**FM10**  
**Diamond**



**FM11**  
**Iconic**



**FM12**  
**Luxe**



**FM13**  
**Glamour**



**FM14**  
**Fortune**



## Floor Tile

### Famed 12x24 - Matte

Level 5



**FM10**  
**Diamond**



**FM11**  
**Iconic**



**FM12**  
**Luxe**



**FM13**  
**Glamour**



**FM14**  
**Fortune**

## Floor Tile

### Mythique Marble 12x24 - Matte

*Level 5*



**MY10 Altissimo**



**MY11 Calacatta Venecia**



**MY12 Majestic**



**MY13 Botticino**

## Floor Tile

### Saddlebrook 6" x 36"

Level 5



SD13 Oak Trail



SD14 Farmhouse



SD15 Walnut Creek



SD16 Gravel Road



## Floor Tile

### Volume 1.0 12x24

Level 5



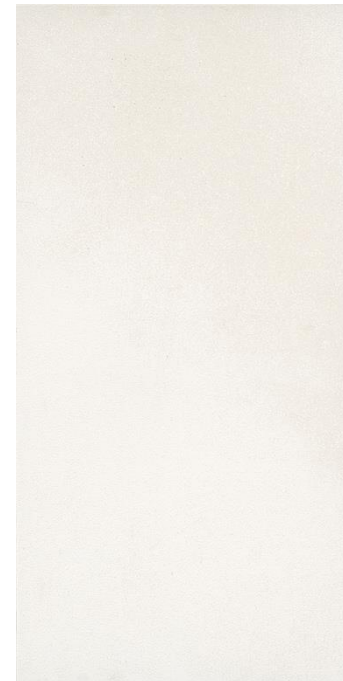
**VL71**  
**Degrees**  
**Silver**



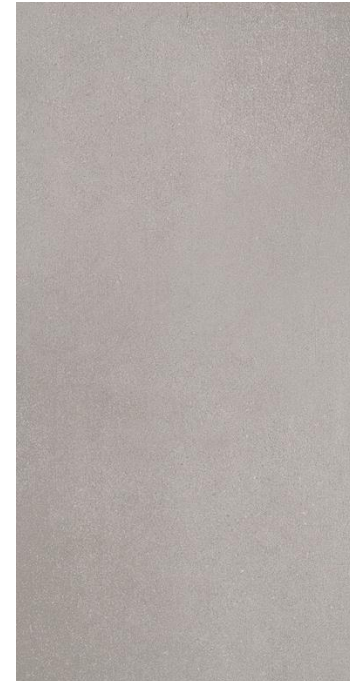
**VL72**  
**Pebble**



**VL73**  
**Stereo**  
**Grey**



**VL75**  
**Sonic**  
**White**



**VL79**  
**Electric**  
**Moss**

## Floor Tile

### Virtuo 12x24

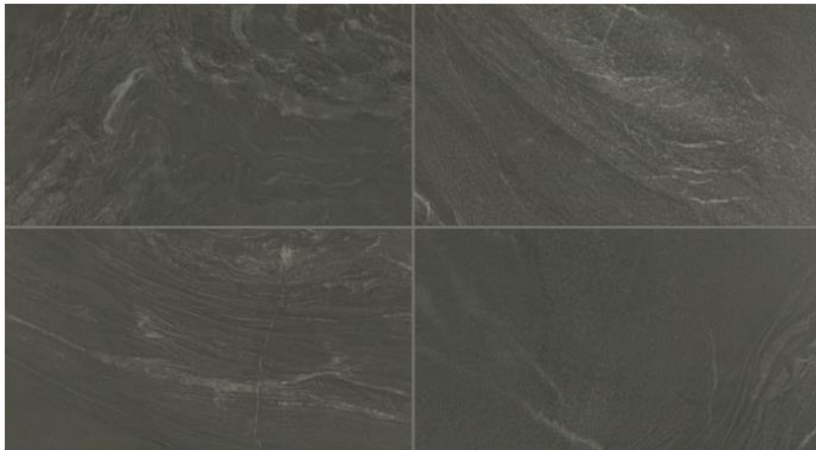
Level 5



MAESTRO VR10



COMPOSER VR11



BRAVURA VR12

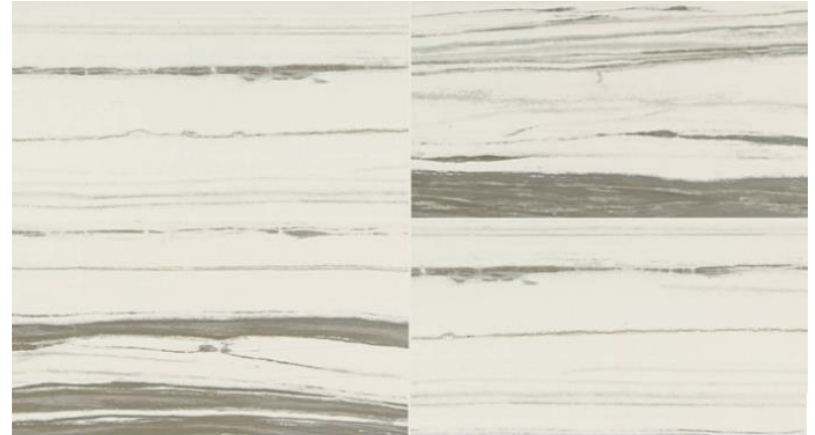
## Floor Tile

### Virtuo- Stria 12x24

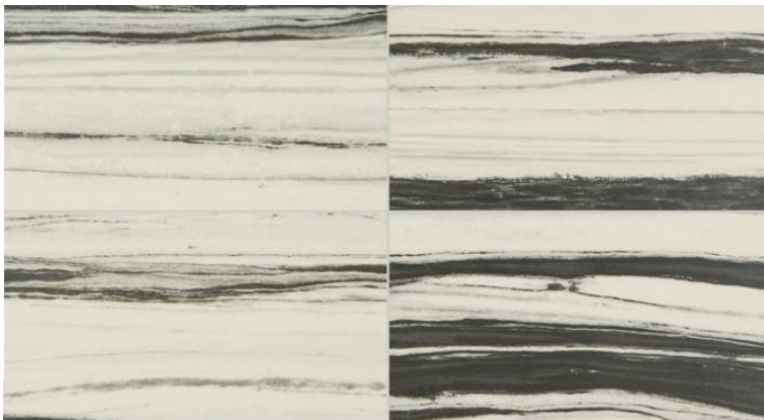
Level 5



STRIA MAESTRO VR13



STRIA COMPOSER VR14



STRIA BRAVURA VR15



## Wall Tile

### Cabris (Cannes) 12x12

Level 1

\*Wall tile available only with structural tile shower option



CS20 Buff



CS22 Fair



CS23 Iron



## Wall Tile

### Artiquity (Advantage) 12x12

*Level 2*



**AQ01 Portrait White**



**AQ03 Renoir Grey**



**AQ02 Mural Taupe**

## Wall Tile

### Balans 12x12

*Level 2*



**BA30 White**

## Wall Tile

### Costar 12x12

*Level 2*



**CT76 Calacatta Empire**

## Wall Tile

### Epitomize (Advantage) 12x12

*Level 2*



**EP20 Aria White**



**EP21 Percussion Taupe**

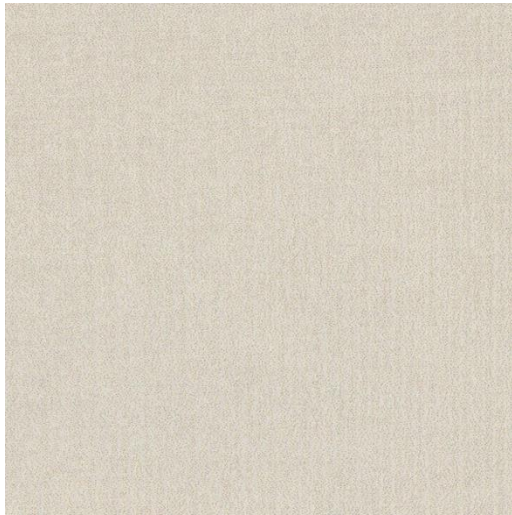


**EP22 Trumpet Grey**

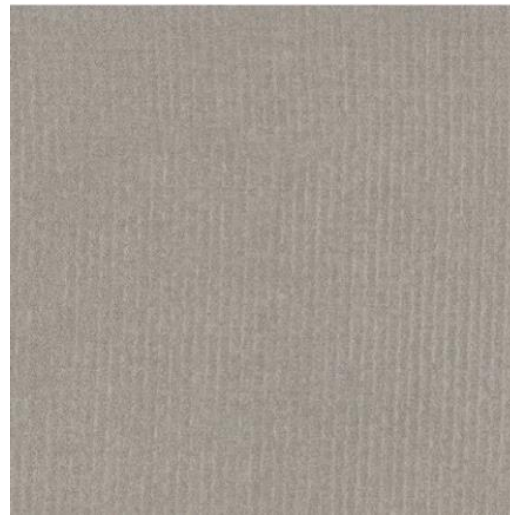
## Wall Tile

### Koncrete 12x12

*Level 2*



KC01 White



KC04 Gray

## Wall Tile

### Resilience 12x12

*Level 2*



**RL20 Vitality White**



**RL21 Dynamic Beige**



**RL23 Stamina Grey**

## Wall Tile

### Archaia 12x24

Level 3



AR40 Relic White



AR41 Artifact Beige



AR42 Province Grey



AR43 Atlas Grey



## Floor Tile

### Artiquity (Advantage) 12x24

Level 3



AQ01 Portrait White



AQ02 Mural Taupe



AQ03 Renoir Grey

## Wall Tile

### Balans 12x24

*Level 3*



**BA30 White**

## Wall Tile

### Bryne 12x24

*Level 3*



**BR30 Coastline**



**BR31 Mist**

## Wall Tile

### Cabris 12x24

*Level 3*



**CS22 Fair**



**CS20 Buff**



**CS23 Iron**

## Wall Tile

### Costar 12x24

*Level 3*



**CT75 Calacatta Sky**



**CT76 Calacatta Empire**

## Wall Tile

Elect 12x24

*Level 3*



**EL31 Beige**



**EL30 White**



**EL32 Grey**



## Floor Tile

### Epitomize (Advantage) 12x24

*Level 3*



**EP20 Aria White**



**EP21 Percussion Taupe**



**EP22 Trumpet Grey**



## Wall Tile

### Finish Line 3x6

*Level 3*



White gloss FL90



Fawn gloss FL92

## Wall Tile

### Koncrete 12x24

*Level 3*



KC01 White



KC04 Grey

## Wall Tile

### Memoir 12x12

Level 3



ME20 Petal Gray



ME21 Petal Black



ME24 Crystal Grey



ME25 Crystal Black

## Wall Tile

### Memoir 12x12

*Level 3*



**ME26 Jewel Grey**



**ME27 Jewel Black**



**ME28 Cosmo Grey**



**ME29 Cosmo Blue**

## Wall Tile

### Resilience 12x24

*Level 3*



**RL21 Dynamic Beige**



**RL20 Vitality White**

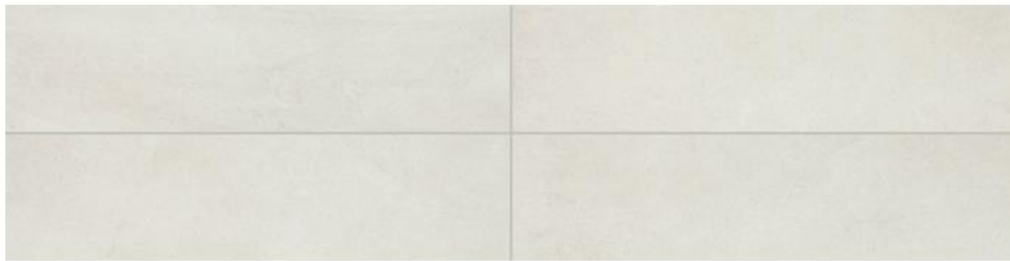


**RL23 Stamina Gray**

## Floor Tile

### Wanderwise 6x24

*Level 3*



SWAN WW01



DRIFT WW02



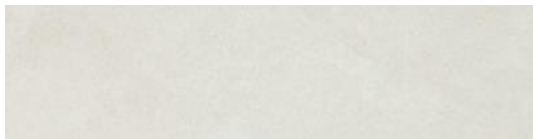
ROAM WW03



## Floor Tile

### Wanderwise 6x24 & 12x24

Level 3



WW01 Swan



WW02 Drift



WW03 Roam



WW01 Swan



WW02 Drift

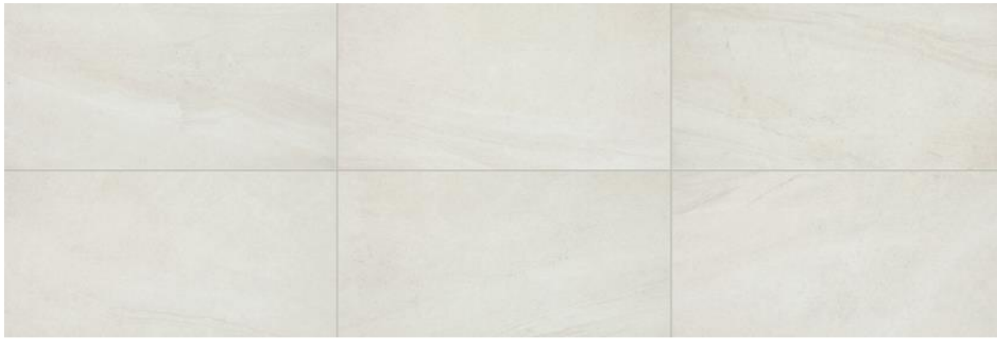


WW03 Roam

## Floor Tile

### Wanderwise 12x24

*Level 3*



SWAN WW01



DRIFT WW02



ROAM WW03

# Wall Tile

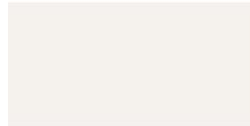
## Color Wheel 3x6

### Level 4

#### SEMI-GLOSS



BLACK  
K111 (2)



ARCTIC WHITE  
0190 (1)



BISCUIT  
K175 (1)



URBAN PUTTY  
0161 (2)



ARCHITECTURAL  
GRAY 0109 (2)



DESERT GRAY  
X114 (1)

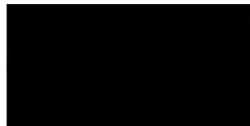


SUEDE GRAY  
0182 (2)

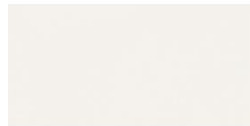


CHALKBOARD  
0180 (2)

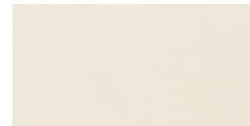
#### MATTE



MATTE BLACK  
K711 (2)



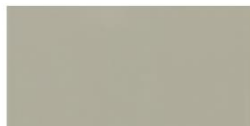
MATTE ARCTIC WHITE  
0790 (1)



MATTE BISCUIT  
K775 (1)



MATTE URBAN PUTTY  
0761 (2)



MATTE ARCHITECTURAL  
GRAY 0709 (2)



MATTE DESERT GRAY  
X714 (1)



MATTE SUEDE GRAY  
0782 (2)



MATTE CHALKBOARD  
0780 (2)

## Wall Tile

### Florentine 12x24

Level 4



**FL06 Carrara- 10x14 glossy**



**FL08 Argento**



**FL06 Carrara**



**FL09 Niciolla**

## Wall Tile

### Linden Point 12x24

*Level 4*



**LP19 Bianco**



**LP20 Beige**



**LP21 Grigio**

## Wall Tile

### Perpetuo - Matte 12x24

Level 4



**PT20**  
Timeless  
White



**PT21**  
Brilliant  
White



**PT22**  
Elegant  
Beige



**PT23**  
Eternal  
Grey



**PT24**  
Infinite  
Black



## Wall Tile

### Sleigh Creek 6" x 36"

Level 4



SK30 Cabriolet



SK31 Stagecoach



SK33 Wagon

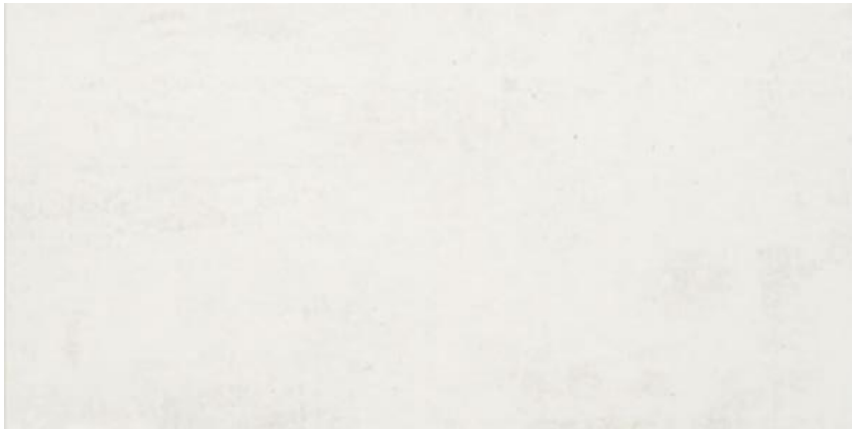


SK34 Chariot

## Wall Tile

### Stella Vista (Advantage) 12x24

Level 4



**SV16 White Canvas**



**SV17 Golden Sand**



**SV18 Cement Grey**

## Wall Tile

Volume 1.0 12x12

*Level 4*



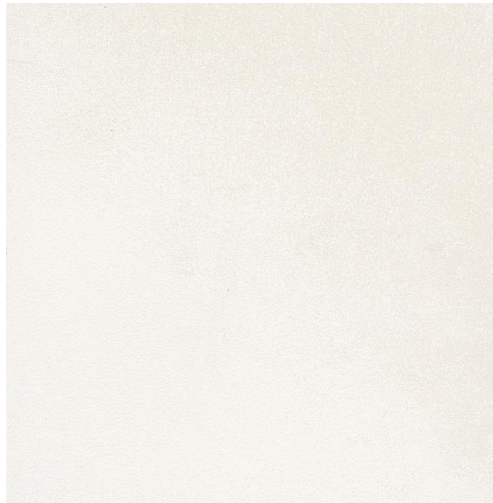
**VL71 Degrees Silver**



**VL72 Pebble**



**VL73 Stereo Grey**



**VL75 Sonic White**



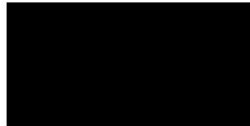
**VL79 Electric Moss**

# Wall Tile

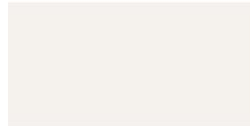
## Color Wheel 4x16

### Level 5

#### SEMI-GLOSS



BLACK  
K111 (2)



ARCTIC WHITE  
0190 (1)



BISCUIT  
K175 (1)



URBAN PUTTY  
0161 (2)



ARCHITECTURAL  
GRAY 0109 (2)



DESERT GRAY  
X114 (1)

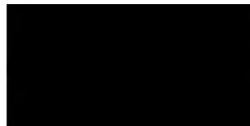


SUEDE GRAY  
0182 (2)

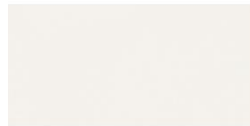


CHALKBOARD  
0180 (2)

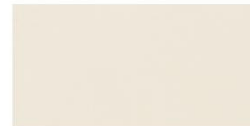
#### MATTE



MATTE BLACK  
K711 (2)



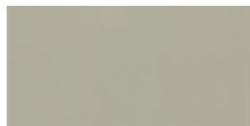
MATTE ARCTIC WHITE  
0790 (1)



MATTE BISCUIT  
K775 (1)



MATTE URBAN PUTTY  
0761 (2)



MATTE ARCHITECTURAL  
GRAY 0709 (2)



MATTE DESERT GRAY  
X714 (1)



MATTE SUEDE GRAY  
0782 (2)



MATTE CHALKBOARD  
0780 (2)

## Wall Tile

### Costar 4x12

*Level 5*



**CT75 Calacatta Sky**



**CT76 Calacatta Empire**

## Wall Tile

### Fabric Art- Modern Linear 12x24

Level 5



MODERN LINEAR WHITE ML60



MODERN LINEAR MEDIUM GRAY ML63



MODERN LINEAR BEIGE ML61



MODERN LINEAR DARK GRAY ML64



MODERN LINEAR TAUPE ML62



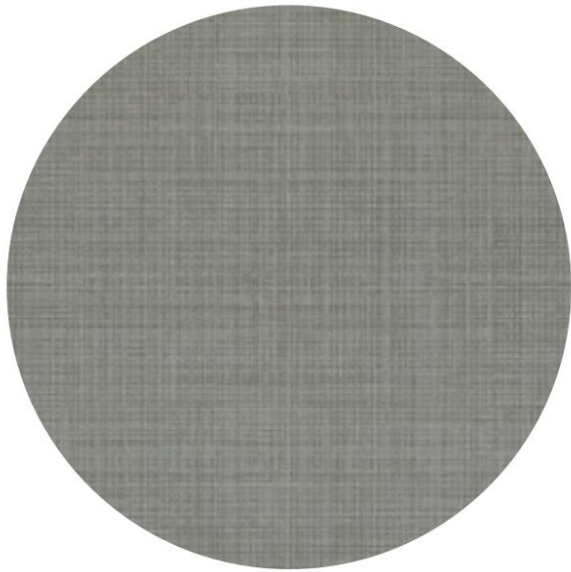
MODERN LINEAR MIDNIGHT BLUE ML65



## Wall Tile

### Fabric Art- Modern Textile 12x24

Level 5



MODERN TEXTILE WHITE MT50



MODERN TEXTILE BEIGE MT51



MODERN TEXTILE TAUPE MT52



MODERN TEXTILE MEDIUM GRAY MT53



MODERN TEXTILE DARK GRAY MT54



MODERN TEXTILE MIDNIGHT BLUE MT55

## Wall Tile

### Famed 12x24 - Polished

Level 5



**FM10**  
**Diamond**



**FM11**  
**Iconic**



**FM12**  
**Luxe**



**FM13**  
**Glamour**



**FM14**  
**Fortune**

## Wall Tile

### Famed 12x24 - Matte

Level 5



**FM10**  
**Diamond**



**FM11**  
**Iconic**



**FM12**  
**Luxe**



**FM13**  
**Glamour**



**FM14**  
**Fortune**



## Wall Tile

### Mythique Marble 12x24 - Polished

*Level 5*



**MY10 Altissimo**



**MY11 Calacatta Venecia**



**MY12 Majestic**



**MY13 Botticino**

## Wall Tile

### Mythique Marble 12x24 - Matte

Level 5



**MY10 Altissimo**



**MY11 Calacatta Venecia**



**MY12 Majestic**



**MY13 Botticino**

## Wall Tile

### Mythology Undulated 4x12

Level 5



SANTORINI MY90



OLYMPUS MY91



HARMONIA MY92



CHRONOS MY93



CYCLADE MY94



AURA MY95



TITAN MY96



## Wall Tile

### Saddlebrook 6" x 36"

Level 5



SD13 Oak Trail



SD14 Farmhouse



SD15 Walnut Creek



SD16 Gravel Road

## Wall Tile

### Volume 1.0 12x24

Level 5



**VL71**  
**Degrees**  
**Silver**



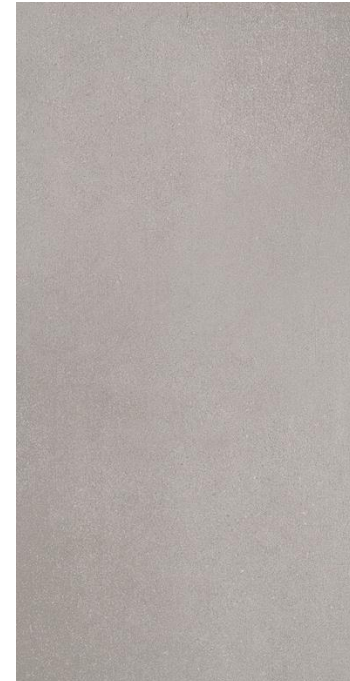
**VL72**  
**Pebble**



**VL73**  
**Stereo**  
**Grey**



**VL75**  
**Sonic**  
**White**



**VL79**  
**Electric**  
**Moss**

## Wall Tile

### Virtuo 12x24

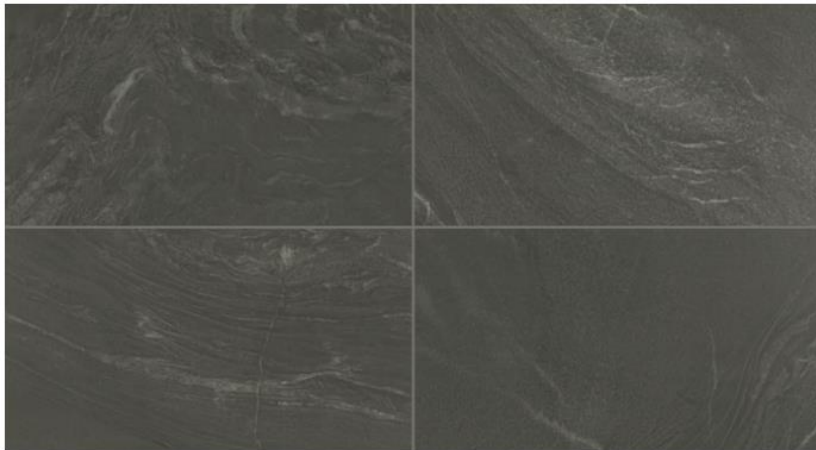
Level 5



MAESTRO VR10



COMPOSER VR11



BRAVURA VR12

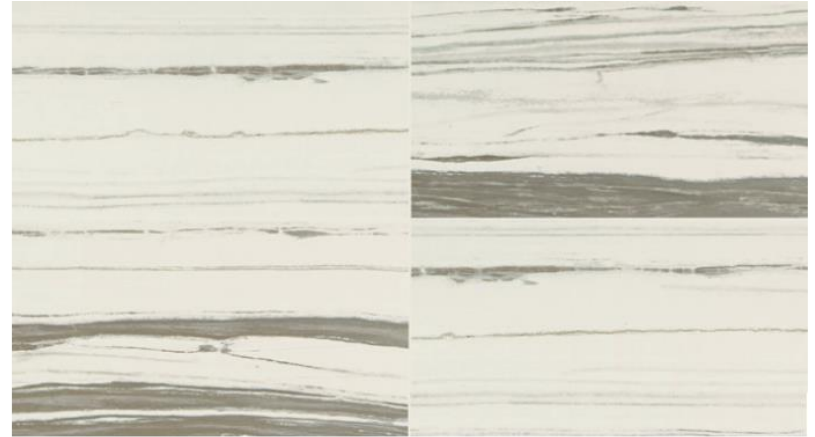
## Wall Tile

### Virtuo- Stria 12x24

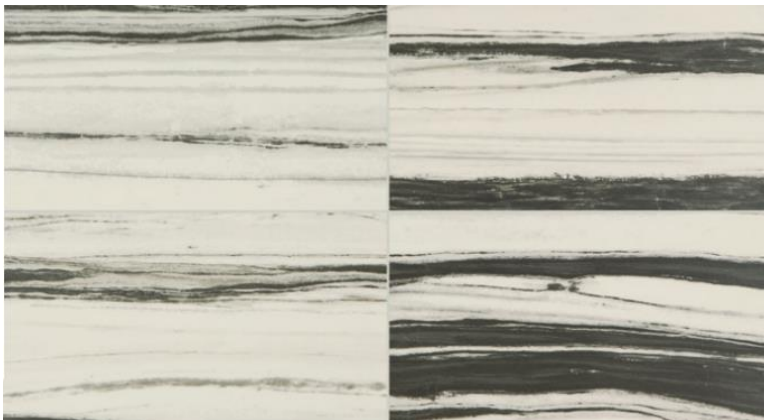
Level 5



STRIA MAESTRO VR13



STRIA COMPOSER VR14

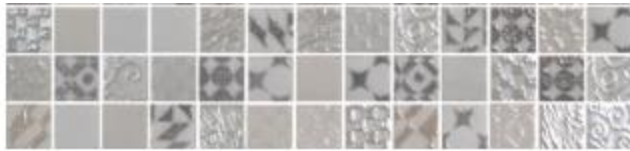


STRIA BRAVURA VR15

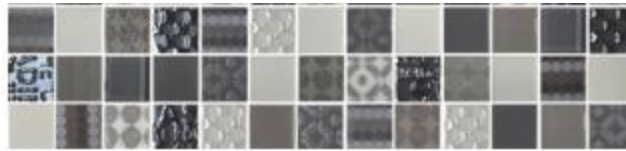
## Wall Tile

### Uptown Glass 1x1

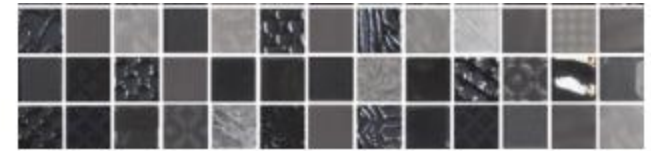
*3" Deco Row option*



METRO CREAM UP07



METRO TAUPE UP09



METRO GRAY UP08



## Wall Tile

### 1" Random Mosaic

*3" Deco Row option*



DA081RANDMS1P

Limestone - Chenille Silver



M7011RANDMS1P

Marble - Carrara White